

This form is intended to fulfill the requirements of Chapter A-E 7.08 (3)(a) thru (i) U.S. Public Land Survey Monument Location Record, Wisconsin Administrative Code. Use the reverse side of form for continuation.

U.S. PUBLIC LAND SURVEY MONUMENT LOCATION

Recorders Data

USPLS CORNER: SW SECTION SECTION: 36 TOWNSHIP: 36 NORTH RANGE: 08 EAST

NAME OF WATERWAY FOR M.C. CORNER: N/A SECTION LINE: N/A

(CITY)(VILLAGE)(TOWN) OF: CRESCENT COUNTY OF: ONEIDA

Description of monument found or placed and all other evidence used as the basis for monument location; including monuments and related measurements required if the corner location was reestablished by lost corner proportionate methods. Also indicate name of original surveyor, original survey date and the corner monument, bearing trees, witness or other reference monuments established; including measured bearing and distance ties, from available records.

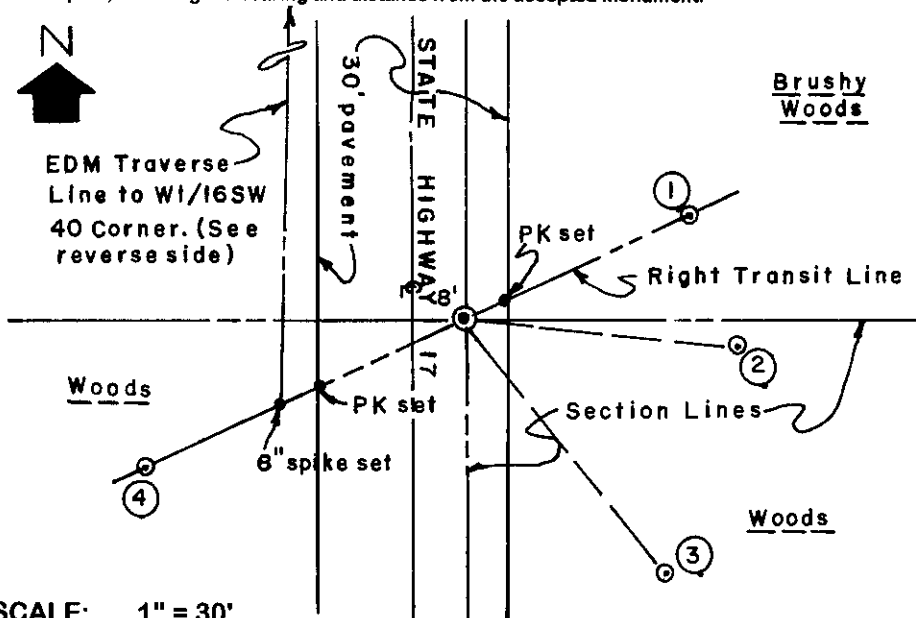
This corner location reestablished by doubling measured distance between the West 1/4 corner and the W1/16SW corner of Section 36 South on a right line by total station traverse, per diagram and data shown on the reverse side of this form, and I set a 3/8" dia. by 3" long Mag spike flush in the existing blacktop pavement of State Trunk Highway 17 at the corner location thereby established. This recovery completed July 6, 2000; there were no direct witnesses.

In September 1862, Alfred Millard/GLO set a wood post as the original corner and marked OBTs: A 14' Tamarack N58°E 28 links, an 8" Tamarack N57°W 17 links, a 16" Tamarack S27°W 17 links and a 12" Tamarack S25°E 31 links; all of which are now obliterated.

I chiseled out an old 1" dia. iron pipe monument with top bent 45° North at the W1/16SW corner, previously set by Norman J. Loftus/RLS 259 and referenced to a blazed/scribed Pj SE and a blazed/scribed Pr NE which I found and used for new ties of S63°E 28.24' and N32°E 50.65' from a 3/4" dia. by 24" long iron pipe I reset flush in blacktop pavement at the found forty corner location as evidenced by the plumb soil cavity from the old bent iron pipe which I left in place. At the West 1/4 corner location I used the standard Oneida County capped aluminum pipe monument per my recovery of record completed on June 29, 2000.

I also found a broken off small PK masonry nail per detail on the reverse side of this form, which I replaced with a 1/4" dia. by 2.5" long PK masonry nail and (2) 1.25" steel washers in a maul dimpled surface of STH 17 pavement, which had apparently been previously intended to be set by the same reestablishment procedure, and which I did not accept.

Plan view map of monument location with bearing and distance ties to a minimum of four(4) described witness or reference monuments of concrete, natural stone, iron, live bearing trees or equivalent material. If applicable, also show a minimum of two(2) bearing and distance ties to any other monument found and not accepted; including the bearing and distance from the accepted monument.



WITNESS MONUMENT TIES:

- ① 3/4" dia. by 24" long iron pipe set with standard yellow poly Reference Mark cap flush N64°17'59"E 38.82'.
- ② New BT 8" Sb S85°E 43.32'.
- ③ New BT 8" Sb S39°E 51.00'.
- ④ 3/4" dia. by 24" long iron pipe set with standard yellow poly Reference Mark cap flush S64°17'59"W 55.37'.

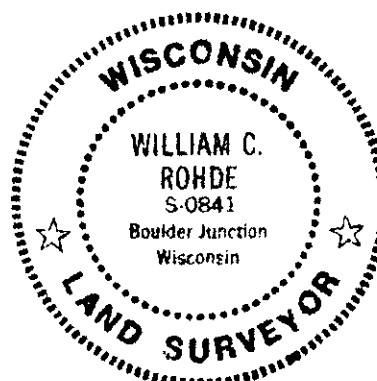
Standard white poly 'T' marker post set 6" NE of NE witness monument.

A standard BT sign was nailed to the upper face of both new BTs noted above.

SCALE: 1" = 30'

Unless otherwise indicated, all bearing tree ties are to a .25" dia. by 2.5" long PK nail with a 1.25" dia. steel washer driven into unblazed right face and a .25" dia. by 2.5" long PK nail with a 2" dia. steel washer stamped BT is also driven into unblazed face of bearing tree at DBH; the basis for measured bearings is by compass to nearest degree and all tie distances are measured horizontal by steel tape corrected to nearest 1/100th feet at standard temperature of 68° F.

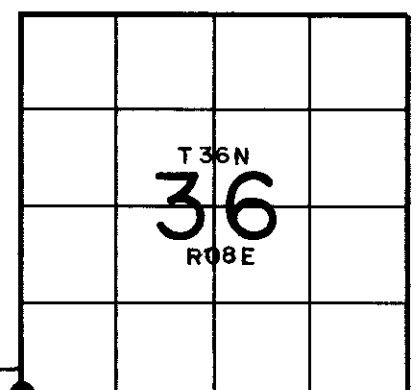
RLS SEAL:



LAND SURVEYOR CERTIFICATE:

I, William C. Rohde, hereby certify that I am duly licensed as a Professional Land Surveyor in the State of Wisconsin; that this USPLS monument location was determined by me and/or under my direct supervision and control; and that this U.S. Public Land Survey Monument Location Record is true and correct to the best of my knowledge and belief.

Signed: *William C. Rohde*
William C. Rohde RLS 841

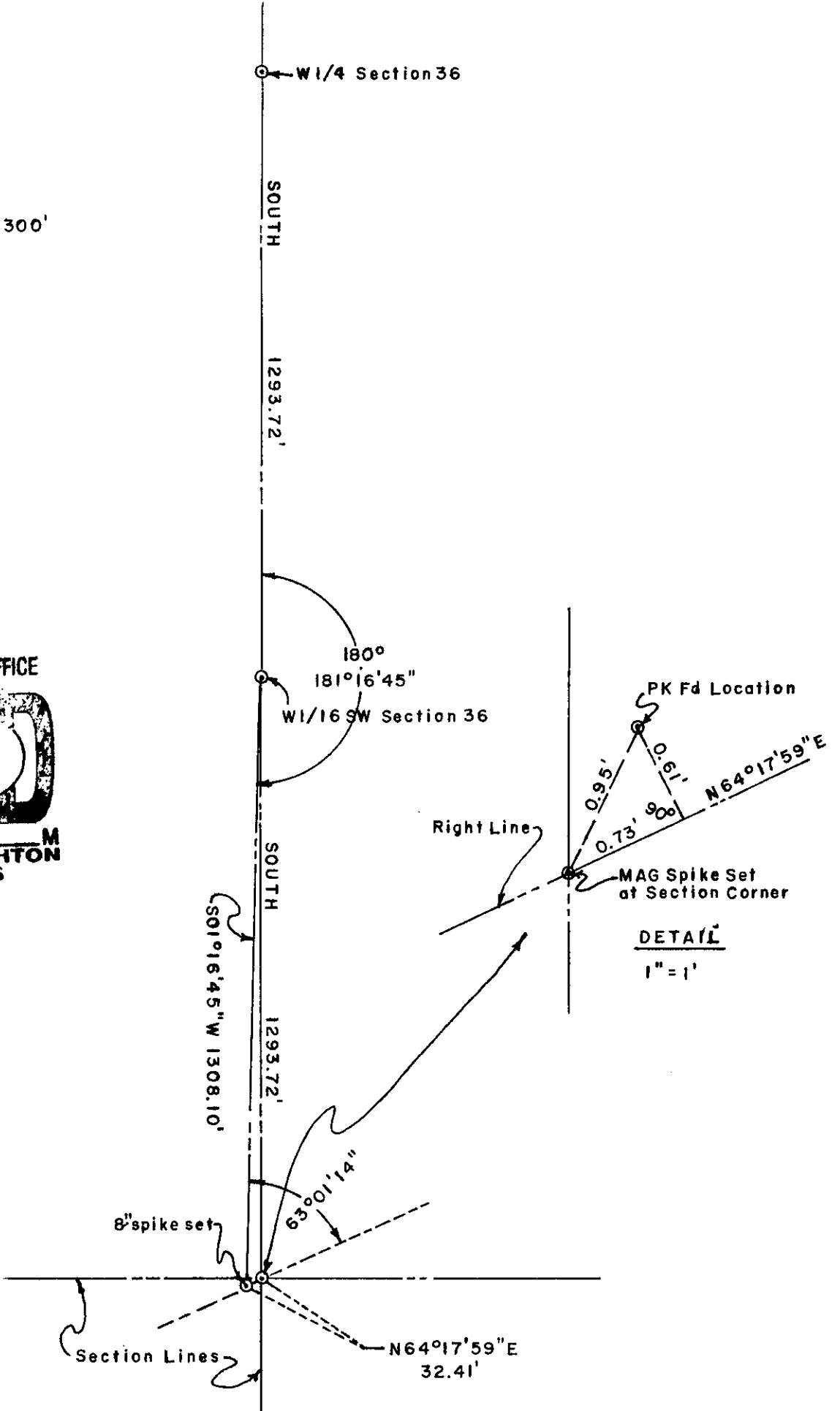


Z 21



Scale: 1" = 300'

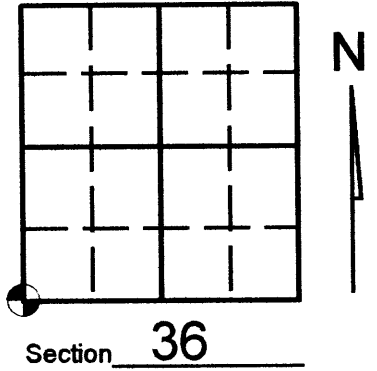
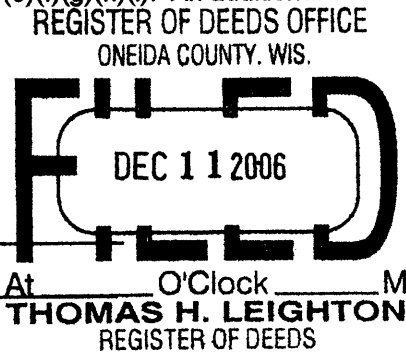
REGISTER OF DEEDS OFFICE
 ONEIDA COUNTY, WIS.
 FEB 8 2001
 At _____ M
 THOMAS LEIGHTON
 REGISTER OF DEEDS



U.S. PUBLIC LAND SURVEY MONUMENT RECORD

Note: This form is intended and designed to fulfill all requirements of Wisconsin Administrative Code, Chapter A-E 7.08 U.S. Public Land Survey Monument Record (3)(a)(b)(c)(d)(e)(f)(g)(h)(i). An additional sheet may be added if necessary to conform with said requirements.

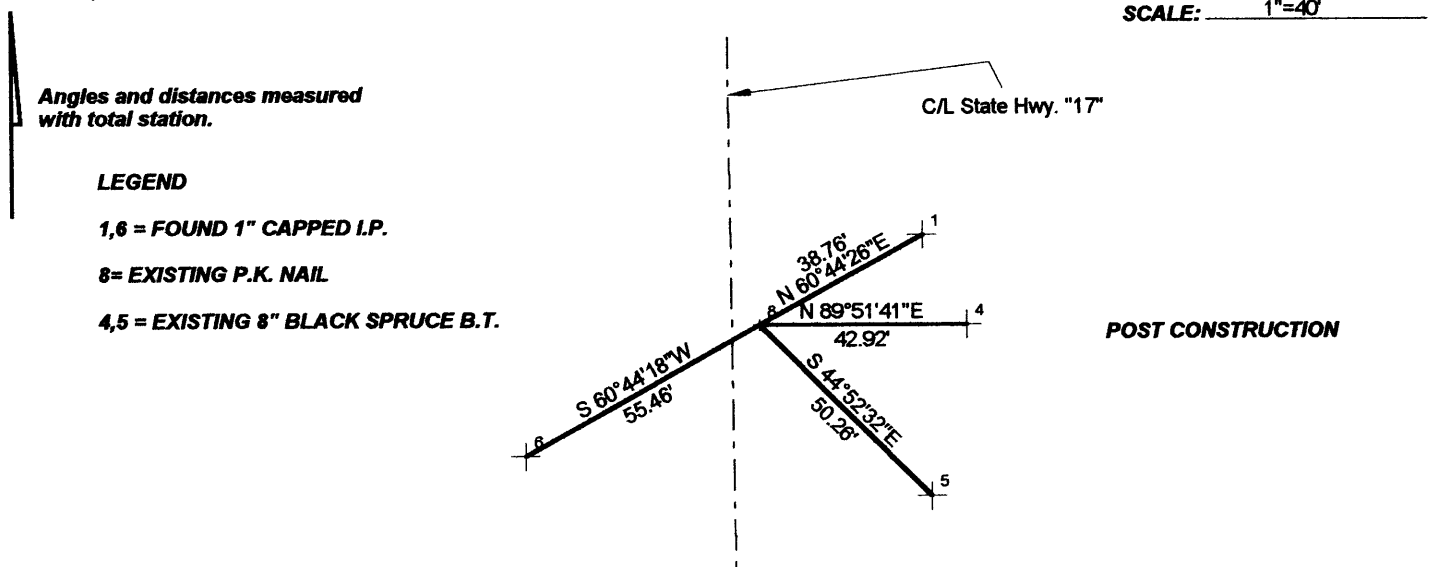
(a) Corner location: Township 36 North
 Range 08 Eas/West
 Town/City/Village CRESCENT
 County ONEIDA



(b) (f) (g) (h) Description of monument found at this corner and if it was accepted, state all evidence (material, testimonial, occupational, plats, records, other monuments) used as a basis for accepting. If not accepted or if nothing was found, state evidence used as basis for establishing location. If reestablished through lost corner proportionate methods, indicate all monuments, distances and directions used to establish. Indicate type of monument found or set and sign post.

December 2006, Kevin Bixby found P.K. nail. Said P.K nail represents the corner as noted on form 3608350000 found prior to road construction.

(c) (d) (e) Plan view of corner with ties to at least 4 witness monuments. If in disagreement with previously established corner, show the distances between the two corners and also indicate the ties to the **N** disputed corner.



(i) I, KEVIN P. BIXBY
 (type or print name) certify that the corner location on this record was determined by me or under my direction and control and that this U.S. Public Land Survey Monument Record is correct and complete to the best of my knowledge and belief.

Kevin P. Bixby
 Signature 12/08/06
Date



Stamp

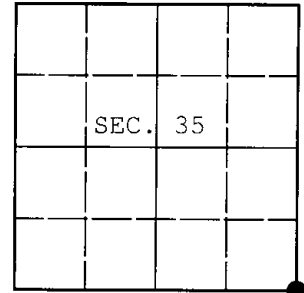
360835 00 00

Index No. Z-21

U.S. PUBLIC LAND SURVEY MONUMENT RECORD

Note: This form is intended and designed to fulfill all requirements of Wisconsin Administrative Code, Chapter A-E 7.08 U.S. Public Land Survey Monument Record (3) (a) (b) (c) (d) (e) (f) (g) (h) (i). An additional sheet may be added if necessary to conform with said requirements.

(a) CORNER LOCATION: WISCRS - Oneida County
 Cor. of Secs. 1, 2, 35 & 36 N: 134,697.51 USft
 Township 35 & 36 North E: 254,565.20 USft
 Range 8 East of the 4th P.M. Datum: NAD 1983(2011)
 Town of Crescent County of Oneida



(b) HISTORY OF ORIGINAL CORNER ESTABLISHMENT

Original Surveyor: _____ Original Accessories: _____
 Date of Survey: Commenced: _____
 Completed: _____

(b) (f) (g) (h) Description of monument found at this corner and if it was accepted, state all evidence (material, testimonial, occupational, plats, records, other monuments) used as a basis for accepting. If not accepted or if nothing was found, state evidence used as basis for establishing location. If re-established through lost corner proportionate methods, indicate all monuments, distances and directions used to establish. Indicate type of monument and sign post found or set.

NOTE: This is a perpetuation of a previous USPLS Monument Record by William C. Rohde, RLS dated January 31, 2001 and filed in the office of the Oneida County Register of Deeds. A complete history of the corner can be found on the previous monument record. I accept the previous location as a true and faithful perpetuation or reestablishment of the original corner location and further perpetuate it as follows.

June 14, 2016: I was unable to recover Rohde's monument or any of his accessories. I contacted the Lincoln County Surveyor and was given his Lincoln Co. grid coordinate, measured with GPS at a time when Rohde's PK nail was in existence:

259,389.70 N NAD 1983(1991)
 453,955.80 E US Survey Feet

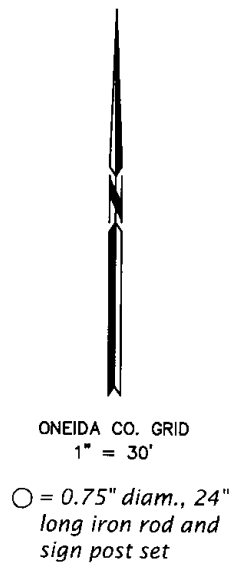
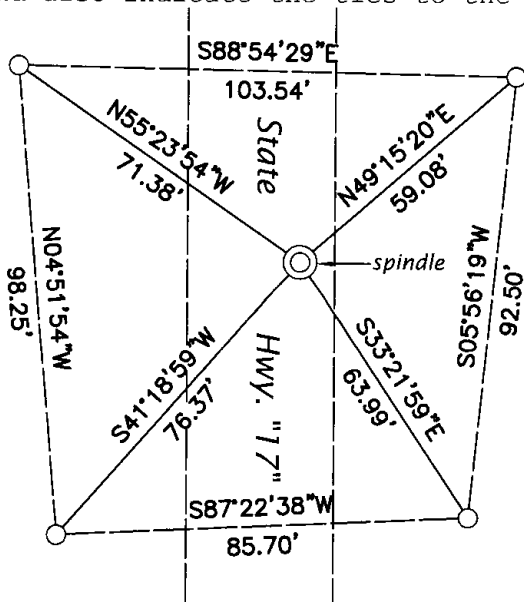
I converted his coordinate to Oneida Co. grid and applied the datum shift computed from the values on the data sheet for HARN station 211S. That shift is:

South, 0.05 USft NAD 1983(1991) -> NAD 1983(2011)

At the resulting coordinate, I set a cotton picker spindle in the Northbound lane of State Highway 17. I established accessories as shown below.

The coordinates shown were derived from two independent RTN observations of the corner point and are referenced to the WISCORS GNSS Network.

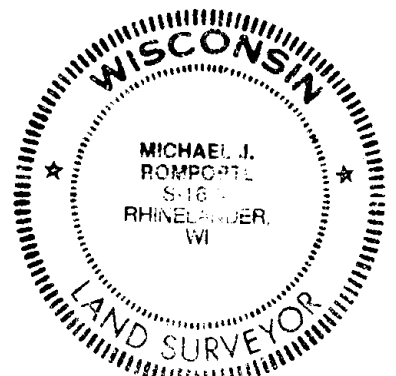
(c) (d) (e) Plan view of corner with ties to at least 4 witness monuments. If in disagreement with previously established corner, show the distances between the two corners and also indicate the ties to the disputed.



REGISTER OF DEEDS OFFICE
 ONEIDA COUNTY
 FILED

DEC 28 2016

AT _____ O'CLOCK _____ M
 KYLE J. FRANSON
 REGISTER OF DEEDS



(i) I, Michael J. Romportl, Professional Land Surveyor No. S-1624, hereby certify that the corner location on this record was determined by me or under my direction and control and that this U.S. Public Land Survey Monument Record is correct and complete to the best of my knowledge and belief.

Michael J Romportl 12/23/2016
 Signature Date