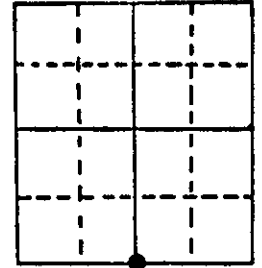


U.S. PUBLIC LAND SURVEY MONUMENT RECORD

Note: This form is intended and designed to fulfill all requirements of Wisconsin Administrative Code, Chapter A-E 5.02, U.S. Public Land Survey Monument Record (3) (a) (b) (c) (d) (e) (f) (g) (h) (i). An additional sheet may be added if necessary to conform with said requirements.

(a) Corner location: Township 36 North
 Range 8 East ~~West~~
 Town/City/Village Town of Crescent
 County Oneida

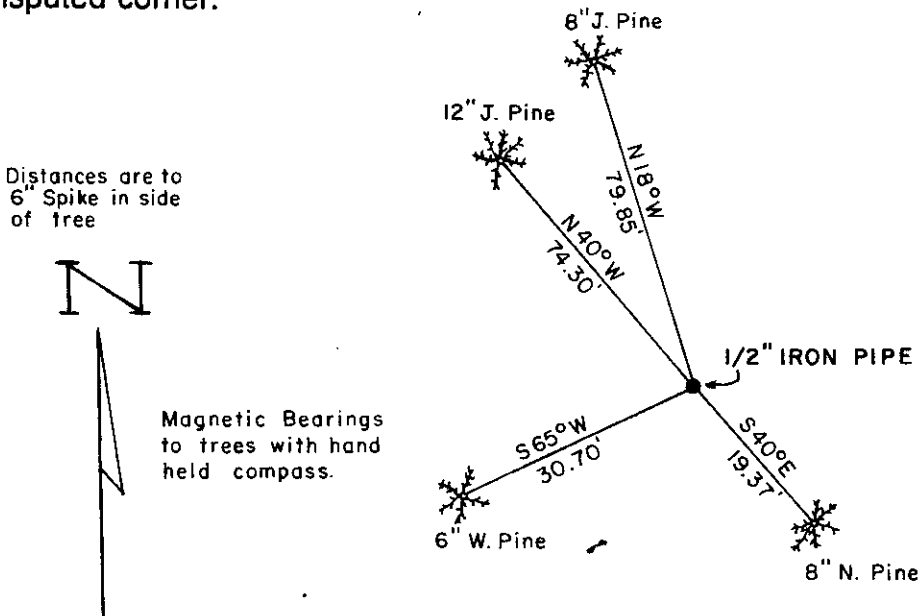


Section 35

(b) (f) (g) (h) Description of monument found at this corner and if it was accepted, state all evidence (material, testimonial, occupational, plats, records, other monuments) used as a basis for accepting. If not accepted or if nothing was found, state evidence used as basis for establishing location. If reestablished through lost corner proportionate methods, indicate all monuments, distances and directions used to establish.

Corner set by Alfred Millard in 1863. West between 2 & 35 40.00 set $\frac{1}{4}$ post. BT's Spruce 10" N22W 23lks, W.Pine 8" S34E 18 lks. D.H. Vaughan was at corner in 1899. He found B.F. Dorr's corner in center of East-West road & center of road to north. I found a $\frac{1}{2}$ " iron pipe at intersection of East-West & North roads.

(c) (d) (e) Plan view of corner with ties to at least 4 witness monuments. If in disagreement with previously established corner, show the distances between the two corners and also indicate the ties to the disputed corner.



Distances are to 6" Spike in side of tree



Magnetic Bearings to trees with hand held compass.

(i) I, William E. Badow
 (type or print name) certify that the corner location on this record was determined by me or under my direction and control and that this U.S. Public Land Survey Monument Record is correct and complete to the best of my knowledge and belief.

William E. Badow

12-5-84

Signature

Date



Index No. 2-19

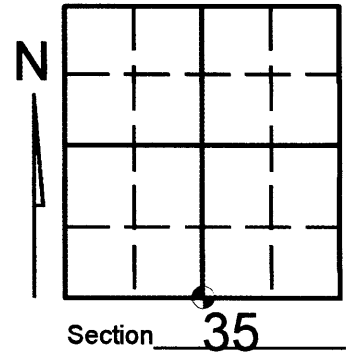
3608350020

U.S. PUBLIC LAND SURVEY MONUMENT RECORD

Note: This form is intended and designed to fulfill all requirements of Wisconsin Administrative Code, Chapter A-E 7.08 U.S. Public Land Survey Monument Record (3)(a)(b)(c)(d)(e)(f)(g)(h)(i). An additional sheet may be added if necessary to conform with said requirements.

(a) Corner location: Township 36 North
 Range 08 East West

Town/City/Village CRESCENT
 County ONEIDA



(b) (f) (g) (h) Description of monument found at this corner and if it was accepted, state all evidence (material, testimonial, occupational, plats, records, other monuments) used as a basis for accepting. If not accepted or if nothing was found, state evidence used as basis for establishing location. If reestablished through lost corner proportionate methods, indicate all monuments, distances and directions used to establish. Indicate type of monument found or set and sign post.

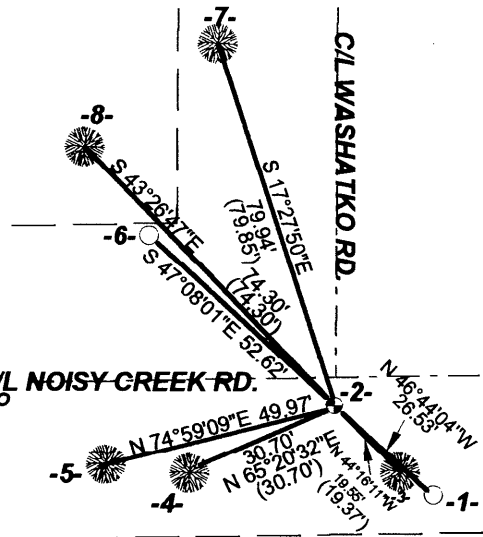
SEE U.S. PUBLIC LAND SURVEY MONUMENT RECORD DOCUMENT NUMBER Z-19 FOR CORNER HISTORY.

(c) (d) (e) Plan view of corner with ties to at least 4 witness monuments. If in disagreement with previously established corner, show the distances between the two corners and also indicate the ties to the disputed corner.

LEGEND

- 1- SET 1" X 24" I.P. AND W. PLASTIC SIGN POST
- 2- SET 1" IRON PIPE USING TIES AS SHOWN.
- 3- SET SPIKE 20" R. PINE (EAST SIDE)
- 4- EXISTING SPIKE IN 8" W. PINE
- 5- SET SPIKE IN 15" R. PINE (NORTH SIDE)
- 6- SET 1" X 24" IRON PIPE
- 7- EXISTING SPIKE IN J.P. STUMP
- 8- EXISTING J.P. STUMP (MEASUREMENT TAKEN TO CENTER OF STUMP)

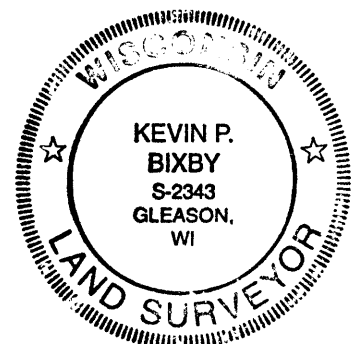
() DISTANCES PER CORNER SHEET Z-19



REVISED 3/05/04 TO SHOW IRON PIPE SET.

(i) I, KEVIN P. BIXBY

(type or print name) certify that the corner location on this record was determined by me or under my direction and control and that this U.S. Public Land Survey Monument Record is correct and complete to the best of my knowledge and belief.



Index No. 2-19
619

Kevin Bixby
Signature

03/08/04
Date

Stamp
3608350020