

U.S. PUBLIC LAND SURVEY MONUMENT LOCATION

Recorders Data

USPLS CORNER: WEST 1/4 SECTION: 36 TOWNSHIP: 36 NORTH RANGE: 08 EAST

NAME OF WATERWAY FOR M.C. CORNER: N/A SECTION LINE: N/A

~~(CITY/VILLAGE/TOWN)~~ OF: CRESCENT COUNTY OF: ONEIDA

Description of monument found or placed and all other evidence used as the basis for monument location; including monuments and related measurements required if the corner location was reestablished by lost corner proportionate methods. Also indicate name of original surveyor, original survey date and the corner monument, bearing trees, witness or other reference monuments established; including measured bearing and distance ties, from available records.

Found and accepted an older undisturbed 2" dia. iron pipe monument with uncapped top 12" above grade at this corner location and a standard white poly 'T' marker post 12" East. I carefully pulled the iron pipe and reset it with a standard 2" dia. by 30" long aluminum pipe monument with stamped Oneida County cap 3" above grade. I left the old iron pipe monument flat on grade next to new monument set. Corner falls 46.5 feet East of STH 17 pavement centerline and about 48 feet north of centerline of private drive leading East to Fire No. 2010.

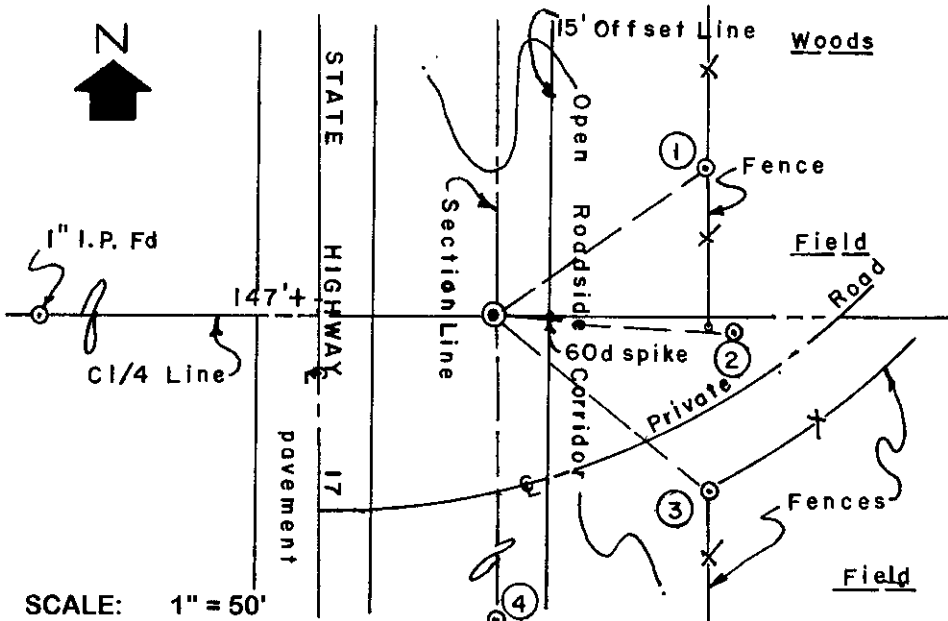
In July 1865, William E. Daugherty/GLO set a wood post as the original corner and marked OBTs: A 10" Py N61°E 730? links and a 10" Py S13°W 1146? links; all of which are now considered obliterated.

In May 1895, D.H. Vaughan notes a wood post at this corner and BTs: An 18" Py S06°W 23 links and an 18" Py S39°E 76 links per Old Fieldbook 11 Page 67 in Oneida County survey records; all now obliterated. In March 1912, he also notes a post found at this corner per Old Fieldbook 7 Page 47 in Oneida County survey records.

In October 1927, C.D. Vaughan notes he found Dorrs SE BT and new BTs: A Py N66°E 138 links and an iron pin S36°W 255 links per Old Fieldbook 38 Page 23 in Oneida County survey records; now obliterated.

In November 1997, William E. Bandow notes a 2" dia. iron pipe found at this corner per Plat of Survey filed as C-1406 and C-1423 in Oneida County survey records. This recovery witnessed by Ms Joan Newman, East adjoining landowner who stopped by to query me.

Plan view map of monument location with bearing and distance ties to a minimum of four(4) described witness or reference monuments of concrete, natural stone, iron, live bearing trees or equivalent material. If applicable, also show a minimum of two(2) bearing and distance ties to any other monument found and not accepted; including the bearing and distance from the accepted monument.



WITNESS MONUMENT TIES:

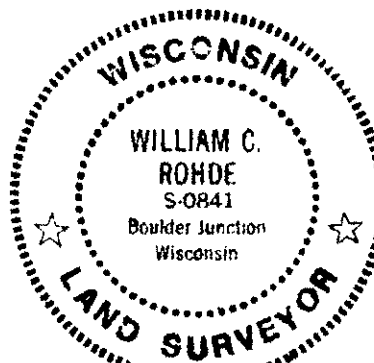
- ① 3/4" dia. by 24" long iron pipe set with Reference Mark yellow poly cap in top 3" above grade N55°E 67.12'.
- ② New BT 6" Pr S86°E 63.25'.
- ③ 3/4" dia. by 24" long iron pipe set with Reference Mark yellow poly cap in top flush with grade S50°E 72.70'.
- ④ New BT 7" Pr South 110.20'; a std BT sign nailed to NW face.

Also found a 1" dia. iron pipe West at 147'+- per record Plat of Surveys by William E. Bandow.

SCALE: 1" = 50'

Unless otherwise indicated, all bearing tree ties are to a .25" dia. by 2.5" long PK nail with a 1.25" dia. steel washer driven into unblazed right face and a .25" dia. by 2.5" long PK nail with a 2" dia. steel washer stamped BT is also driven into unblazed face of bearing tree at DBH; the basis for measured bearings is by compass to nearest degree and all tie distances are measured horizontal by steel tape corrected to nearest 1/100th feet at standard temperature of 68° F.

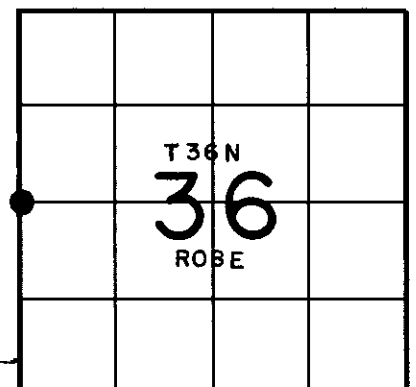
RLS SEAL:



LAND SURVEYOR CERTIFICATE:

I, William C. Rohde, hereby certify that I am duly licensed as a Professional Land Surveyor in the State of Wisconsin; that this USPLS monument location was determined by me and/or under my direct supervision and control; and that this U.S. Public Land Survey Monument Location Record is true and correct to the best of my knowledge and belief.

Signed: *William C. Rohde*
William C. Rohde RLS 841



SECTION LOCATION MAP

INDEX NO. _____

3608352000

X 21