

U.S. PUBLIC LAND SURVEY MONUMENT RECORD

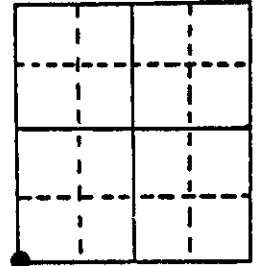
Note: This form is intended and designed to fulfill all requirements of Wisconsin Administrative Code, Chapter A-E 5.02, U.S. Public Land Survey Monument Record (3) (a) (b) (c) (d) (e) (f) (g) (h) (i). An additional sheet may be added if necessary to conform with said requirements.

(a) Corner location: Township 36 North

Range 10 East/West

Town/City/Village Pelican

County Oneida

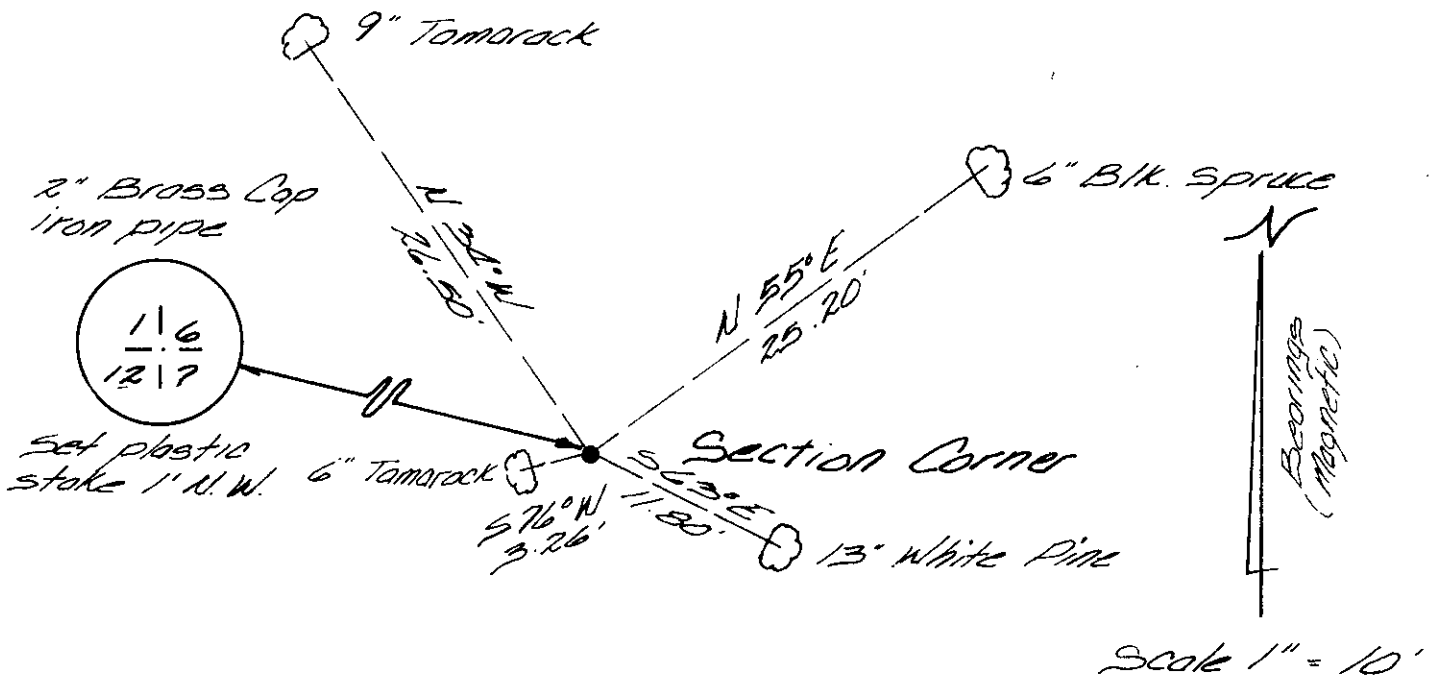


Section 6

(b) (f) (g) (h) Description of monument found at this corner and if it was accepted, state all evidence (material, testimonial, occupational, plats, records, other monuments) used as a basis for accepting. If not accepted or if nothing was found, state evidence used as basis for establishing location. If reestablished through lost corner proportionate methods, indicate all monuments, distances and directions used to establish.

July 1859 - H.C. Fellows, Deputy Surveyor - Set post corner to Sections 1, 6, 7 and 12 Original BT's Tamarac 11" S47°W 30 links; Tamarac 10" N55°W, 20 links; 8" Tamarack N28°E 15 links; Spruce 9" S35°E 12 links.
 June 5, 1906 - D.H. Vaughan, County Surveyor - Found orig trees at SW cor of 6
 November 12, 1948 - Genisot Engineering Co. - Survey in Section Section 1, T36N, R9E identifies corner as being monumented with a brass capped iron pipe.
 March 17, 1988 - James D. Rein, RLS Found unmarked brass capped 2" dia iron pipe extending 18" above ground level. Made new bearing trees 6" Tamarack S76°W 3.26 feet; 13" White Pine S63°E 11.80 feet; 6" Black Spruce N55°E 25.20 feet; 9" Tamarack N34°W 26.50 feet; Note: Distance measurements made to on aluminum nail in center of root crown on side of tree facing corner.

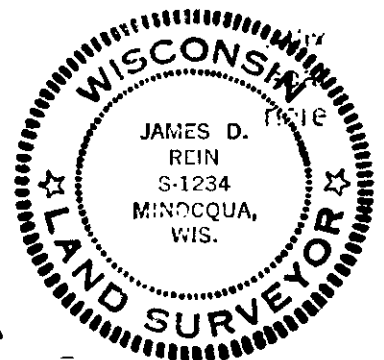
(c) (d) (e) Plan view of corner with ties to at least 4 witness monuments. If in disagreement with previously established corner, show the distances between the two corners and also indicate the ties to the disputed corner.



(i) I, James D. Rein, Registered Land Surveyor No. S-1234
 (type or print name) certify that the corner location on this record was determined by me or under my direction and control and that this U.S. Public Land Survey Monument Record is correct and complete to the best of my knowledge and belief.

James D. Rein
 Signature

April 9th, 1988
 Date



Index No. E-1

3609010000