

This form is intended to fulfill the requirements of Chapter A-E 7.08 (3)(a) thru (i) U.S. Public Land Survey Monument Location Record, Wisconsin Administrative Code. Use the reverse side of form for continuation.

U.S. PUBLIC LAND SURVEY MONUMENT LOCATION RECORD

Recorders Data

USPLS CORNER: NORTH 1/4 CORNER SECTION: 12 TOWNSHIP: 36 NORTH RANGE: 9 EAST

NAME OF WATERWAY FOR M.C. CORNER: N/A SECTION LINE: N/A

(CITY)(VILLAGE)(TOWN) OF: PELICAN COUNTY OF: ONEIDA

Description of monument found or placed and all other evidence used as the basis for monument location; including monuments and related measurements required if the corner location was reestablished by lost corner proportionate methods. Also indicate name of original surveyor, original survey date and the corner monument, bearing trees, witness or other reference monuments established; including measured bearing and distance ties, from available records.

No monumentation detected with metal locator in existing roadway at this corner location, so I reset corner with a 3/4" dia. by 12" long steel shaft with uncapped top 6" below gravel road surface, upon the basis of a plat of survey by Todd J. Loftus, RLS 1523, filed as C-865 in Oneida County records, from iron pipe monuments that I found at the SE and SW corners for Lot 3 on said plat of survey, as further represented on the reverse side of this record. Corner falls about 3' South of the centerline of existing gravel road surface mat bearing S85°W.

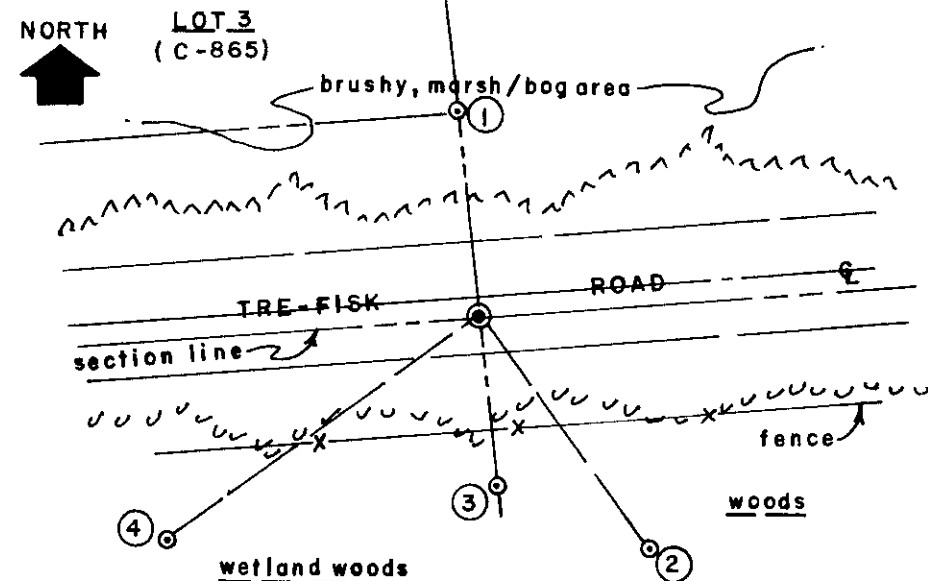
In August 1865, William E. Daugherty/GLO set a wood post as the original corner and marked OBTs: a 10" Pw N69°W 36 links and a 10" Bw S12°E 65 links, all of which are now obliterated beyond recovery purposes.

In November 1948, Wincentzen, RLS 155, notes this corner midway on a right line between opposite section corners at 35.82 chains each way, no monument indicated, per his plat of survey filed as B-1283 in Oneida County records.

In November 1968, Wincentzen, RLS 155, notes an iron pipe at this corner per his typed field notes in Oneida County records, which I could not find as undoubtedly graded out by roadway construction since.

In January 1982, Todd Loftus, RLS 1523, notes a railroad spike at this corner midway on a right line between opposite section corners at 2365.86' each way per his plat of survey filed as C-865 in Oneida County records, which I also could not find as undoubtedly graded out by roadway construction since. This recovery completed August 24, 1999; there were no direct witnesses other than occasional vehicle drive-bys.

Plan view map of monument location with bearing and distance ties to a minimum of four(4) described witness or reference monuments of concrete, natural stone, iron, live bearing trees or equivalent material. If applicable, also show a minimum of two(2) bearing and distance ties to any other monument found and not accepted; including the bearing and distance from the accepted monument.



WITNESS MONUMENT TIES:

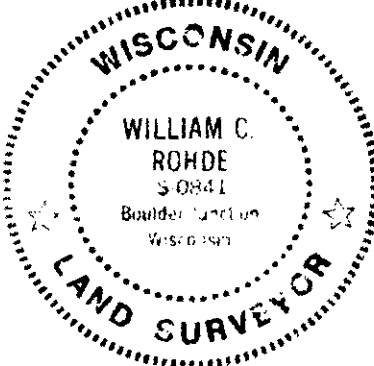
- ① 3/4" dia. iron pipe found with no capped top 2" above grade & painted red N05°W 31.82'.
- ② New BT 8" Mr S36°E 45.27'.
- ③ 1" dia. by 24" long iron pipe set with standard yellow poly Reference Mark cap flush to grade S05°E 26.95' on a right line thru corner to Witness Monument #1.
- ④ New BT 11" Spruce S54°W 60.10'.

Standard white poly 'T' corner marker post set 21.0' North of the corner.

SCALE: 1" = 30'

Unless otherwise indicated, all bearing tree ties are to a .25" dia. by 2.5" long PK nail with a 1.25" dia. steel washer driven into unblazed right face and a .25" dia. by 2.5" long PK nail with a 2" dia. steel washer stamped BT is also driven into unblazed face of bearing tree at DBH; the basis for measured bearings is by compass to nearest degree and all tie distances are measured horizontal by steel tape corrected to nearest 1/100th feet at standard temperature of 68° F.

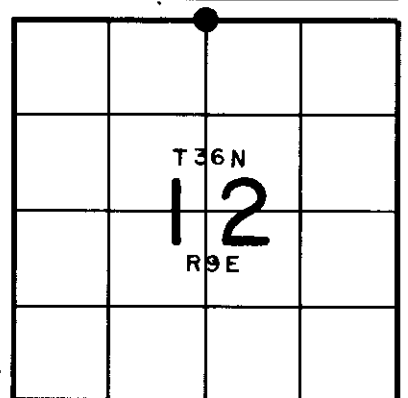
RLS SEAL:



LAND SURVEYOR CERTIFICATE:

I, William C. Rohde, hereby certify that I am duly licensed as a Professional Land Surveyor in the State of Wisconsin; that this USPLS monument location was determined by me and/or under my direct supervision and control; and that this U.S. Public Land Survey Monument Location Record is true and correct to the best of my knowledge and belief.

Signed: *William C. Rohde*
William C. Rohde RLS 841

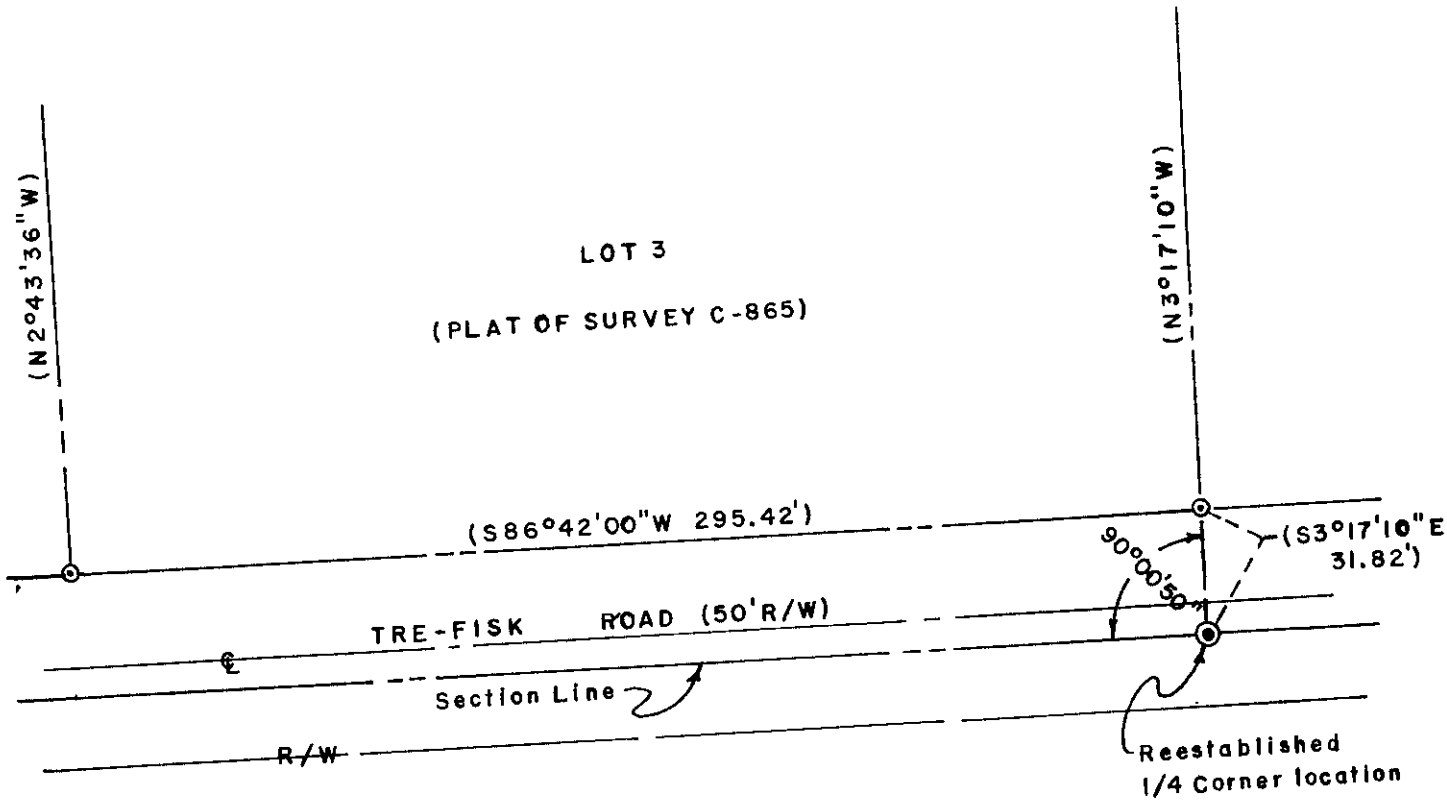


3609010020



Stock No. 26273

NORTH



SCALE: 1" = 50'

DRAFTED BY: W.ROHDE RLS841

REGISTER OF DEEDS OFFICE
ONEIDA COUNTY, WIS.

FILED

At _____ O'Clock _____ M
THOMAS M. LEIGHTON