

U.S. PUBLIC LAND SURVEY MONUMENT RECORD

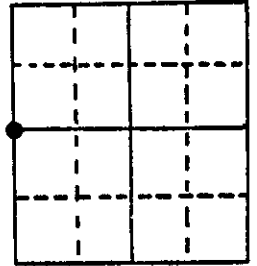
Note: This form is intended and designed to fulfill all requirements of Wisconsin Administrative Code, Chapter A-E 5.02, U.S. Public Land Survey Monument Record (3) (a) (b) (c) (d) (e) (f) (g) (h) (i). An additional sheet may be added if necessary to conform with said requirements.

(a) Corner location: Township 36 North

Range 10 East/West

Town/City/Village Pelican

County Oneida



Section 6

(b) (f) (g) (h) Description of monument found at this corner and if it was accepted, state all evidence (material, testimonial, occupational, plats, records, other monuments) used as a basis for accepting. If not accepted or if nothing was found, state evidence used as basis for establishing location. If reestablished through lost corner proportionate methods, indicate all monuments, distances and directions used to establish.

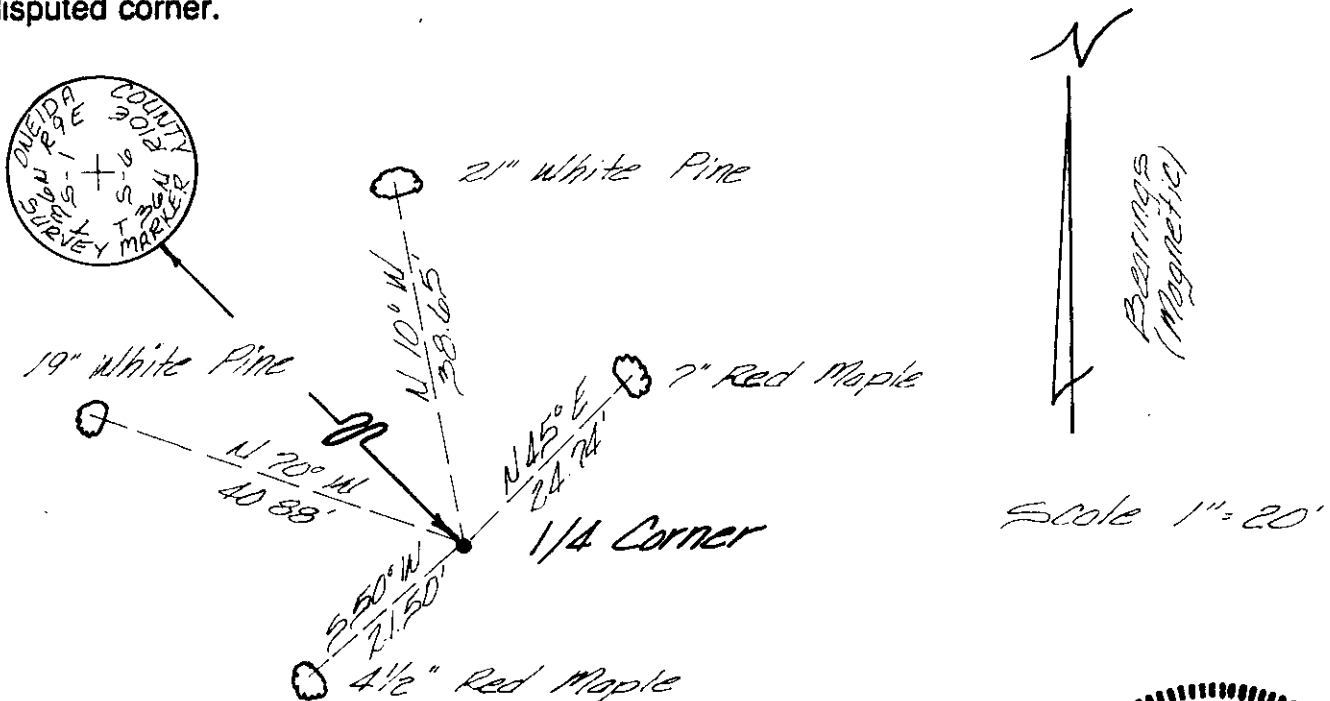
July 1859 - H.C. Fellows, Deputy Surveyor - Set 1/4 Sec post Original BT's:
 Fir 10" S60°W 9 links ; Aspen 8" S35°E 7 links.

November 12, 1940 Genisot Engineering Co. Map in Section 1 T36N, R9E identifies corner as being monumented by a 6" x 6" wood post 40 chains North of Section corner.

March 1988 - James D. Rein, RLS - Recovered a 1/2" x 24" iron pipe which I replaced with a capped 2" dia x 30" long flange bottom aluminum monument. Set plastic stake 1 foot Southeast of corner. And make new bearing trees as shown below in plan view.

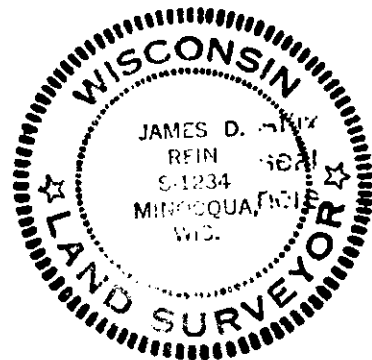
Note: Distance measurements to bearing trees made to aluminum nails in center of root crown on side of tree facing corner.

(c) (d) (e) Plan view of corner with ties to at least 4 witness monuments. If in disagreement with previously established corner, show the distances between the two corners and also indicate the ties to the disputed corner.



(i) I, James D. Rein, Registered Land Surveyor No. S-1234
 (type or print name) certify that the corner location on this record was determined by me or under my direction and control and that this U.S. Public Land Survey Monument Record is correct and complete to the best of my knowledge and belief.

James D. Rein April 9th, 1988
 Signature Date



Index No. C-1

3609012000