

# U.S. PUBLIC LAND SURVEY MONUMENT RECORD

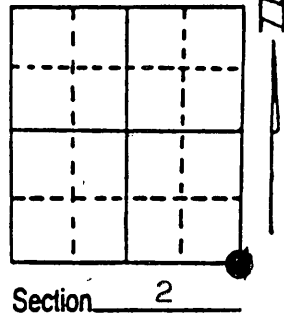
**Note:** This form is intended and designed to fulfill all requirements of Wisconsin Administrative Code, Chapter A-E 7.08 U.S. Public Land Survey Monument Record (3) (a) (b) (c) (d) (e) (f) (g) (h) (i). An additional sheet may be added if necessary to conform with said requirements.

(a) Corner location: Township 36 North

Range 9 East ~~7~~

Town/City/Village Pelican

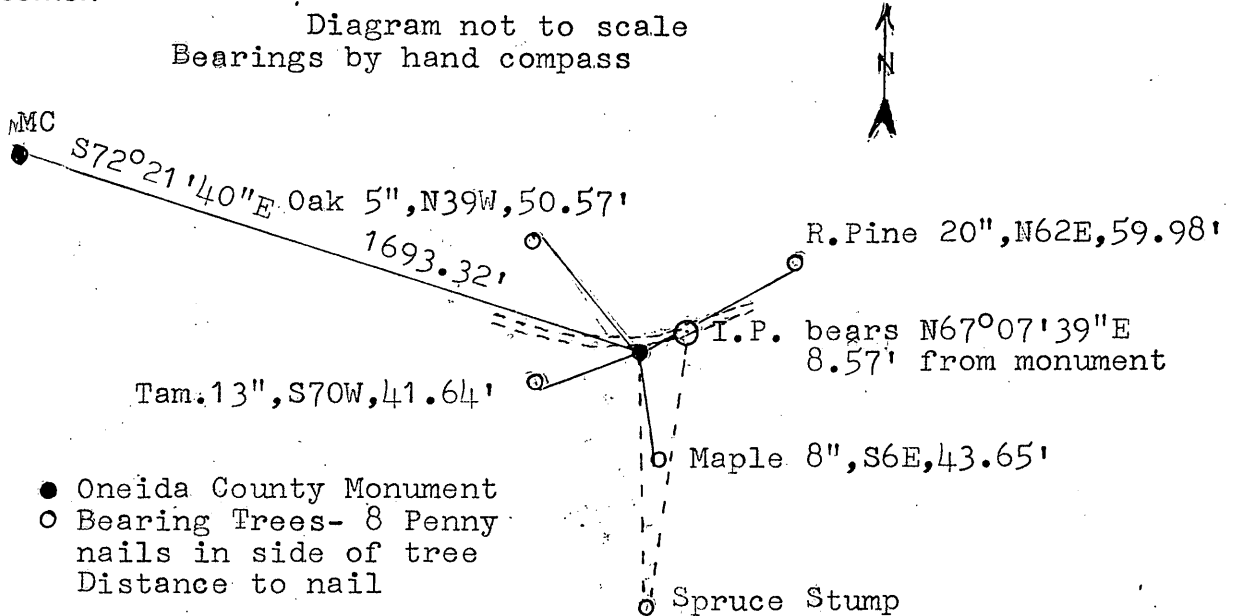
County Oneida



(b) (f) (g) (h) Description of monument found at this corner and if it was accepted, state all evidence (material, testimonial, occupational, plats, records, other monuments) used as a basis for accepting. If not accepted or if nothing was found, state evidence used as basis for establishing location. If reestablished through lost corner proportionate methods, indicate all monuments, distances and directions used to establish. Indicate type of monument found or set and sign post.

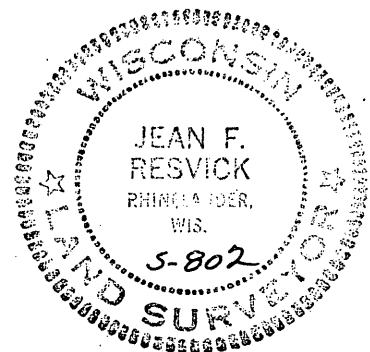
Original Survey in 1863 by William E. Daughtery. In January 1899 D.H. Vaughan (see County Records page 191) did not find the original and established the section corner, Birch 12", N72 $\frac{1}{2}$ °W, 8 $\frac{1}{2}$  lks, W.Pine 22", S38°E, 20 lks. Kirby in 1972 found W.Pine 22", S38°E, 13.20 ft, W.Pine 10", N20°W, 42.77 ft by Burnet. Kirby made new bearing trees Spruce 4", S70°W, 47.19 ft, Y.Pine 4", N45°E, 51.68 ft. Inman in 1974 found Iron Pipe, Spruce 7", S7°E, 63.68 ft, Pine 12", N51°E, 60.06 ft. Inman in 1981 found iron pipe, N.Pine 14", N55°E, 59.7 ft, W.Birch 4", S12°E, 18.3 ft. Griswold in 1989 found iron pipe and N. pine 18", N51°E, 51± ft. Pipe found by Griswold bears N67°E, 8.57 ft. from pipe used by Inman. Red Pine and iron pipe found by Griswold appears to fit with yellow pine marked by Kirby in 1972. All of the records found and the surveyors contacted, that have used this corner since 1974 show that the iron pipe used by Inman in 1974 is the pipe that they have used and accepted as the corner. No history of the pipe found by Griswold has been found, except that the red pine bearing tree fits distance with Kirby's 1972 yellow pine

(c) (d) (e) Plan view of corner with ties to at least 4 witness monuments. If in disagreement with previously established corner, show the distances between the two corners and also indicate the ties to the disputed corner.



(i) I, Jean F. Resvick  
(type or print name) certify that the corner location on this record was determined by me or under my direction and control and that this U.S. Public Land Survey Monument Record is correct and complete to the best of my knowledge and belief.

Jean F. Resvick Date 10/7/91  
Signature Date



Stamp

Index No. E-21

3609020000

and bearing differs by 6 degrees. The tree would be destroyed if it was cut into to find scribing, it is now 20" in diameter. I found 2 iron pipe, a spruce stump 9" diameter bearing S2°E a distance of 63.75 feet and a red pine 20" diameter bearing N62°E a distance of 60.10 feet from the iron pipe used by Inman. From the pipe found by Griswold the spruce stump bears S1°W a distance of 66.60 feet and the red pine bears N51°E a distance of 51 feet. I replaced the iron pipe that Inman used with a Oneida County Aluminum Monument and set sign post 0.5 feet south of monument. Blazed and scribed new bearing trees and drove 8 penny galvanized nails in the side of them as shown on the diagram below. The monument is in the shoulder of the road and the pipe is in the south edge of the black top surface.

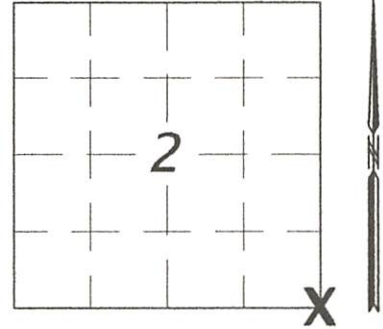
REGISTER OF DEEDS OFFICE  
ONEIDA COUNTY, WIS.  
**FILED**  
NOV 7 1991  
At \_\_\_\_\_ O'Clock \_\_\_\_\_ M  
THOMAS H. LEIGHTON  
REGISTER OF DEEDS

**U.S. PUBLIC LAND SURVEY MONUMENT RECORD**

NOTE: This form is intended and designed to fulfill all requirements of Wisconsin Administrative Code, Chapter A-E 7.08 U.S. Public Land Survey Monument Record (3)(a)(b)(c)(d)(e)(f)(h)(i). An additional sheet may be added if necessary to conform with said requirements.

SECTION 2  
 TOWNSHIP 36 NORTH  
 RANGE 9 EAST  
 TOWN OF PELICAN  
 CORNER ID # 3609020000

(a) CORNER LOCATION AND MONUMENT: Aluminum Monument found at the Southeast Corner of Section 2  
 COUNTY COORDINATE: N 161247.66 E 287347.52 usf  
 WISCRS (Oneida County) Datum: NAD83 (2011)  
 DATE OF SURVEY: 5/29/18  
 SURVEY PARTY: T Sommer



**BASIS FOR MONUMENT LOCATION:**

(b)(f)(g)(h) This is a perpetuation of a previous USPLS Monument Record by Jean F. Resvick, RLS dated 10-7-91 and filed in the office of the Oneida County Register of Deeds. A complete history of the corner can be found on the previous monument record. I accept the previous location as a true and faithful perpetuation or reestablishment of the original corner location and further perpetuate it as follows:

5/29/2018 - I, Ted Sommer, found an aluminum monument at the corner location, below the gravel shoulder on the south side of Tre Fiske Road. Resvick's accessories were found in substantial agreement with his previous record, but were updated as shown below.

The coordinates shown were derived from averaged direct RTN GPS observations at markedly different times and comparison to a previously GPS determined published value.

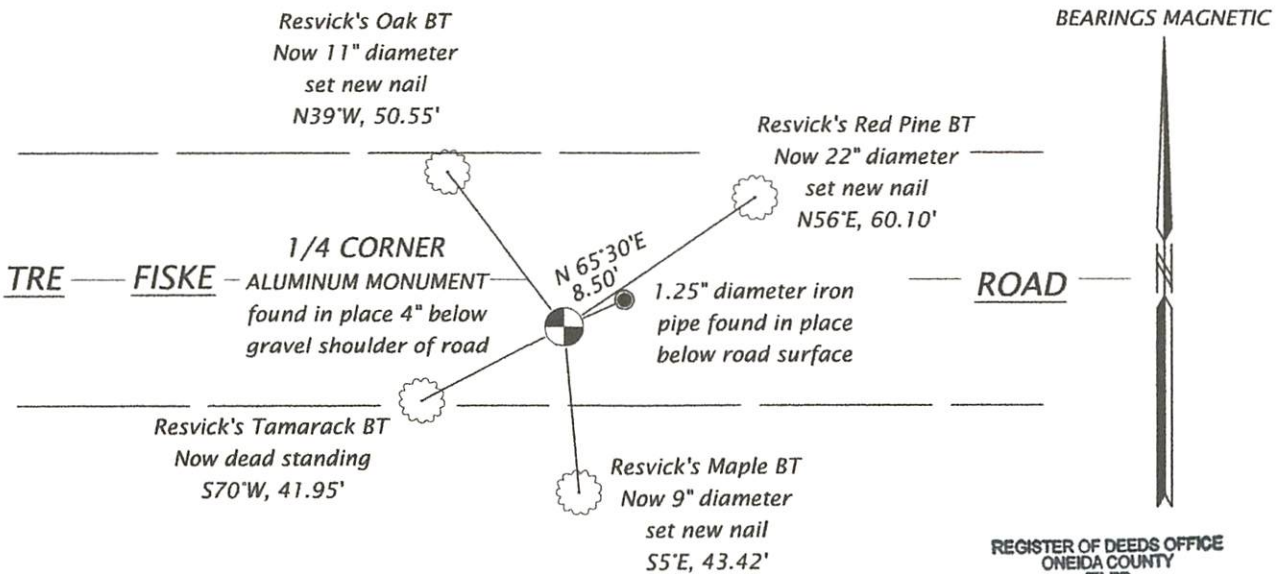


(i) I, Theodore G. Sommer, Professional Land Surveyor No. S-2964 hereby certify that the corner location on this record was determined by me or under my direction and control, and that this U.S. Public Land Survey Monument Record is correct and complete to the best of my knowledge and belief.

Theodore G. Sommer - PLS 2964  
 Dated 1/24/2020

**TIE SKETCH:** (c)(d)(e) Show minimum of four horizontal tie distances to fixed witness monuments. Describe all monuments found or set.

SKETCH NOT TO SCALE  
 MONUMENT DIMENSIONS  
 ARE OUTSIDE DIAMETER



REGISTER OF DEEDS OFFICE  
 ONEIDA COUNTY  
 FILED

APR 21 2022

KYLE J. FRANSON  
 REGISTER OF DEEDS