

This form is intended to fulfill the requirements of Chapter A-E 7.08 (3)(a) thru (i) U.S. Public Land Survey Monument Location Record, Wisconsin Administrative Code. Use the reverse side of form for continuation.

U.S. PUBLIC LAND SURVEY MONUMENT LOCATION

Recorders Data

USPLS CORNER: WEST 1/4 SECTION: 1 TOWNSHIP: 36 NORTH RANGE: 09 EAST

NAME OF WATERWAY FOR M.C. CORNER: N/A SECTION LINE: N/A

(CITY)(VILLAGE)(TOWN) OF: PELICAN COUNTY OF: ONEIDA

Description of monument found or placed and all other evidence used as the basis for monument location; including monuments and related measurements required if the corner location was reestablished by lost corner proportionate methods. Also indicate name of original surveyor, original survey date and the corner monument, bearing trees, witness or other reference monuments established; including measured bearing and distance ties, from available records.

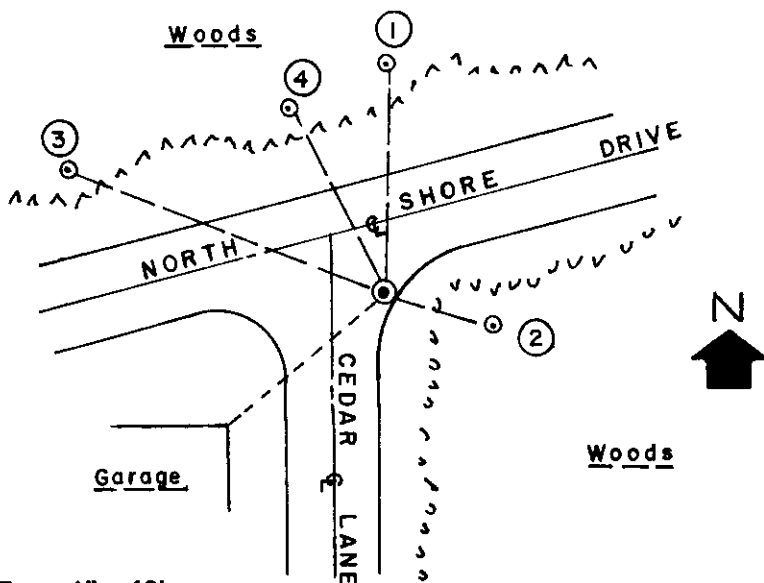
Found and accepted the location of an old 3/4" dia. iron pipe monument at this corner location about 6" below surface of chiseled out blacktop pavement with uncapped upper 6" top of pipe bent NE nearly flat by a grader or plow. I very carefully excavated to the base of the pipe which revealed bottom 12" as being plumb and pulled it to further reveal the original rust scaled soil cavity into which I set a 3/4" by 24" long iron pipe with uncapped top nearly at the pavement surface, which fell 0.30' South of a 1/4" dia. by 1.25" long PK masonry nail found in blacktop pavement, which I reset with a 60d spike flush in blacktop road mix patching as the PK nail had been used for a record survey to the North and NW in 1993 by William E. Badow/RLS 1182 per Plat of Survey filed as C-1022 in Oneida County survey records; all in accord with a phone query to and the approval of Oneida County Surveyor Michael Romportl this date.

In July 1863, William E. Daugherty/GLO set a wood post as the original corner and marked OBTs: A 10" Tamarack N18°W 20 links and a 6" Tamarack S50°E 12 links; all of which are now obliterated.

In April 1966, James Griffin/RLS 755 of Northwoods Surveyors, Inc. Minocqua, Wisconsin indicates an iron pipe monument at this corner and new BTs: A 15" Hemlock S80°E 47.2', now a 20" dia. 18" high sawed stump with faint face markings in lower blaze cavity overgrowth S78°E and within 0.1 feet of 1966 record tie distance to the corner location recovered this date; and a 7" Cedar N31°W 42.1', now a 13" Cedar with lower blaze nearly shut and upper blaze open with plain scribing N28°W and also within 0.1 feet of 1966 record tie distance to corner location recovered this date.

This recovery completed July 7, 2000; there were no direct witnesses other than vehicle drive-bys.

Plan view map of monument location with bearing and distance ties to a minimum of four(4) described witness or reference monuments of concrete, natural stone, iron, live bearing trees or equivalent material. If applicable, also show a minimum of two(2) bearing and distance ties to any other monument found and not accepted; including the bearing and distance from the accepted monument.



WITNESS MONUMENT TIES:

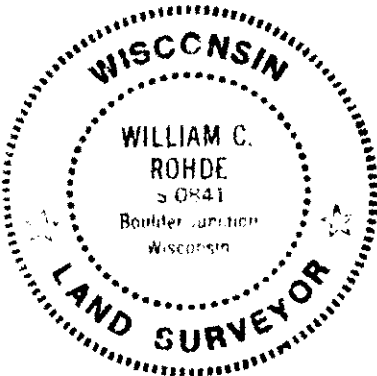
- ① Older 1" dia. red painted iron pipe found with uncapped top 6" above grade North 47.42'.
- ② New BT 12" Hemlock S73°E at 23.80'.
- ③ Older 1.25" dia. iron pipe found with uncapped top 5" above grade at N69°W 70.22'.
- ④ Old 13" Cedar BT with plain blazes N28°W 42.30'.

Standard white poly 'T' marker post also found 8' East of the corner and the NE corner of a 2 stall wood frame garage falls S50°W 43.3 feet.

SCALE: 1" = 40'

Unless otherwise indicated, all bearing tree ties are to a .25" dia. by 2.5" long PK nail with a 1.25" dia. steel washer driven into unblazed right face and a .25" dia. by 2.5" long PK nail with a 2" dia. steel washer stamped BT is also driven into unblazed face of bearing tree at DBH; the basis for measured bearings is by compass to nearest degree and all tie distances are measured horizontal by steel tape corrected to nearest 1/100th feet at standard temperature of 68° F.

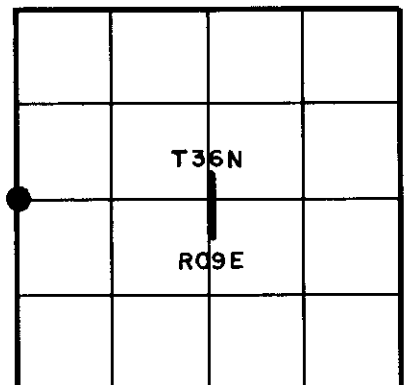
RLS SEAL:



LAND SURVEYOR CERTIFICATE:

I, William C. Rohde, hereby certify that I am duly licensed as a Professional Land Surveyor in the State of Wisconsin; that this USPLS monument location was determined by me and/or under my direct supervision and control; and that this U.S. Public Land Survey Monument Location Record is true and correct to the best of my knowledge and belief.

Signed: *William C. Rohde*
William C. Rohde RLS 841



SECTION LOCATION MAP

INDEX NO. _____

3609022000