

JUN 08 2017

**U.S. PUBLIC LAND SURVEY MONUMENT RECORD**

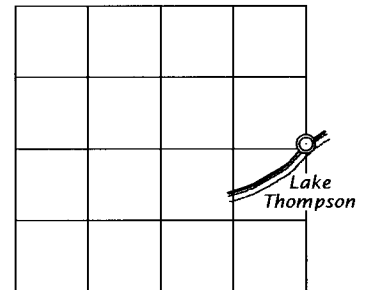
Note: This form is intended and designed to fulfill all requirements of the Wisconsin Administrative Code, Chapter A-E 7.08 U.S. Public Land Monument Record (3)(a)(b)(c)(d)(e)(f)(g)(h)(i). An additional sheet may be added if necessary to conform with said requirements.

AT \_\_\_\_\_ O'CLOCK \_\_\_\_\_ M  
KYLE J. FRANSON  
REGISTER OF DEEDS

(a) CORNER LOCATION: WISCRS - Oneida County  
Meander Corner of Section 3 North: 164645.363 USft  
Township 36 North East: 280898.054 USft  
Range 9 East Latitude: 45° 38' 14.78008" N  
Town of Pelican Longitude: 89° 20' 43.73257" W  
County of Oneida Datum: NAD 83(2011)  
GNSS Method: RTK - Direct  
GNSS Control: WISCORS VRS  
Record North: 164645.017 USft  
Record East: 280898.319 USft  
Record Datum: NAD 83(1991)

(RECORDING AREA)

**SECTION 3**



(b) HISTORY OF ORIGINAL CORNER ESTABLISHMENT

Original Surveyor: William E. Dougherty  
Date of Survey: Commenced July 30th, 1863  
Completed August 11th, 1863  
Original B.T.'S: Tamarack 8" N 41°W, 6 lks.  
Tamarack 8" N 38°E 12 lks.

(f)(g)(h) DESCRIPTION OF MONUMENT FOUND AT THIS CORNER AND IF IT WAS ACCEPTED, STATE ALL EVIDENCE (MATERIAL, TESTIMONIAL, OCCUPATIONAL, PLATS, RECORD, OTHER MONUMENTS) USED AS A BASIS FOR ESTABLISHING LOCATION. IF NOT ACCEPTED OR IF NOTHING WAS FOUND, STATE EVIDENCE USED AS BASIS FOR ESTABLISHING LOCATION. IF REESTABLISHED THROUGH LOST CORNER PROPORTIONATE METHODS, INDICATE ALL MONUMENTS, DISTANCES AND DIRECTIONS USED TO ESTABLISH. INDICATE TYPE OF MONUMENT AND SIGN POST FOUND OR SET.

January 30, 1899 - D.H. Vaughan, County Surveyor, (Old Field Book 1, page 31) recovered meander corner, both original bt's down, and again on December 8, 1900 (Old Field Book 1, page 150) recovered meander post, which I set from original bearings, both down and nearly gone. Made new Spruce 8" N46°E, 92 links. This record is transcribed in Dorr-Vaughan Book, page 192.

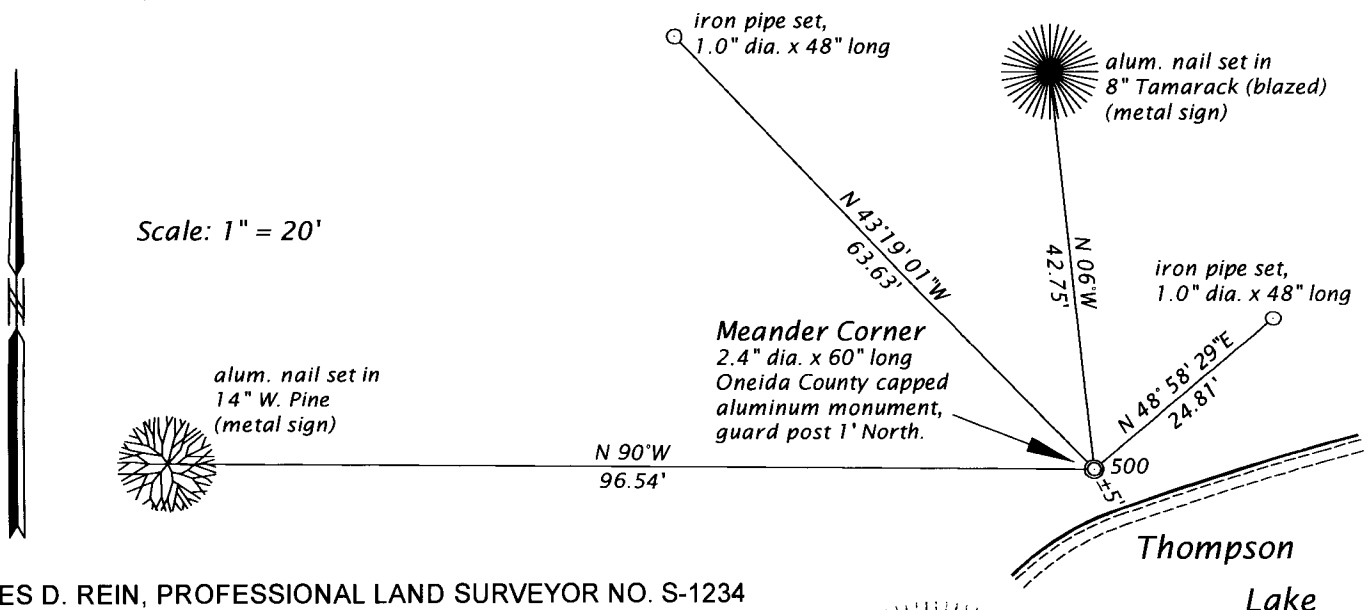
November 4, 1959 - F.R. Wincentsen, County Surveyor and RLS No. 155 (Wincentsen Book, pages 69 and 70 and map of survey in Section 3, T36N, R9E, Dwg. No. 2419-1, filed as C1964 in county surveyor's office) describes corner monumented by an iron pipe, referenced by a bt; Ash 6" N2°E, 4.5 feet.

March 16, 1961 - Sy. M. Poski, RLS No. 140 (map of survey in Section 3, T36N, R9E, filed as C684 in county surveyor's office) dimensions to meander corner without no description. Later Poskie survey, dated 1-29-70, in Section 2, T36N, R9E, filed as B1824, references the meander corner to bt; Ash 6" N2°W, 4.5 feet.

(CONTINUED ON REVERSE PAGE)

The coordinate value shown has been verified by at least one of the following methods: 1) comparison to a previously GPS determined published value; 2) the value is the average of two or more GPS observations at a markedly different time; 3) one or more distances were measured back to the GPS observed corner from temporary GPS observed offset locations.

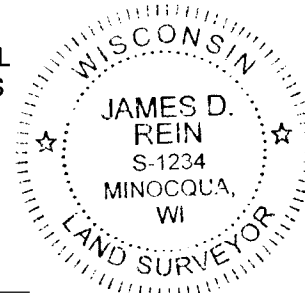
(c)(d)(e) PLAN VIEW OF CORNER WITH TIES TO AT LEAST 4 WITNESS MONUMENTS. IF IN DISAGREEMENT WITH PREVIOUSLY ESTABLISHED CORNER, SHOW THE DISTANCE BETWEEN THE TWO CORNERS AND ALSO INDICATE THE TIES TO THE DISPUTED CORNER.



(i) I, JAMES D. REIN, PROFESSIONAL LAND SURVEYOR NO. S-1234 HEREBY CERTIFY THAT THE CORNER LOCATION ON THIS RECORD WAS DETERMINED BY ME OR UNDER MY DIRECTION AND CONTROL AND THAT THIS U.S. PUBLIC LAND SURVEY MONUMENT RECORD IS CORRECT AND COMPLETE TO THE BEST OF MY KNOWLEDGE AND BELIEF.

*[Handwritten Signature]*

6-06-17  
DATE



INDEX NO. BC - 17  
3609032200

SIGNATURE

(CONTINUED FROM REVERSE PAGE)

April 18, 2017 - James D. Rein, PLS No. 1234, we recovered a 1 3/8" dia. iron pipe in wetland 5 feet from open water. Based upon my analysis of the published southeast section corner and an alternate northeast section corner positions, I determine the iron pipe is harmonious with the Vaughan, Wincentsen and Poskie surveys, and a perpetuation of the original corner, thus we replaced the iron pipe with an Oneida County capped 2.4" dia. x 60" long aluminum monument and made reference ties as shown in plan.