

U.S. PUBLIC LAND SURVEY MONUMENT RECORD

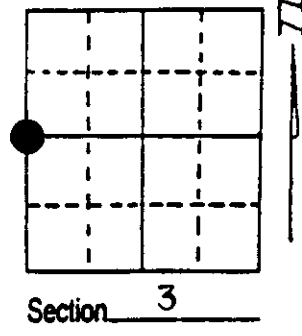
Note: This form is intended and designed to fulfill all requirements of Wisconsin Administrative Code, Chapter A-E 7.08 U.S. Public Land Survey Monument Record (3) (a) (b) (c) (d) (e) (f) (g) (h) (i). An additional sheet may be added if necessary to conform with said requirements.

(a) Corner location: Township 36 North

Range 9 East/West

Town/City/Village PELICAN

County ONEIDA



(b) (f) (g) (h) Description of monument found at this corner and if it was accepted, state all evidence (material, testimonial, occupational, plats, records, other monuments) used as a basis for accepting. If not accepted or if nothing was found, state evidence used as basis for establishing location. If reestablished through lost corner proportionate methods, indicate all monuments, distances and directions used to establish. Indicate type of monument found or set and sign post.

A 1" dia. iron pipe was found at the corner location. I replaced the pipe with an Oneida County Capped Monument.

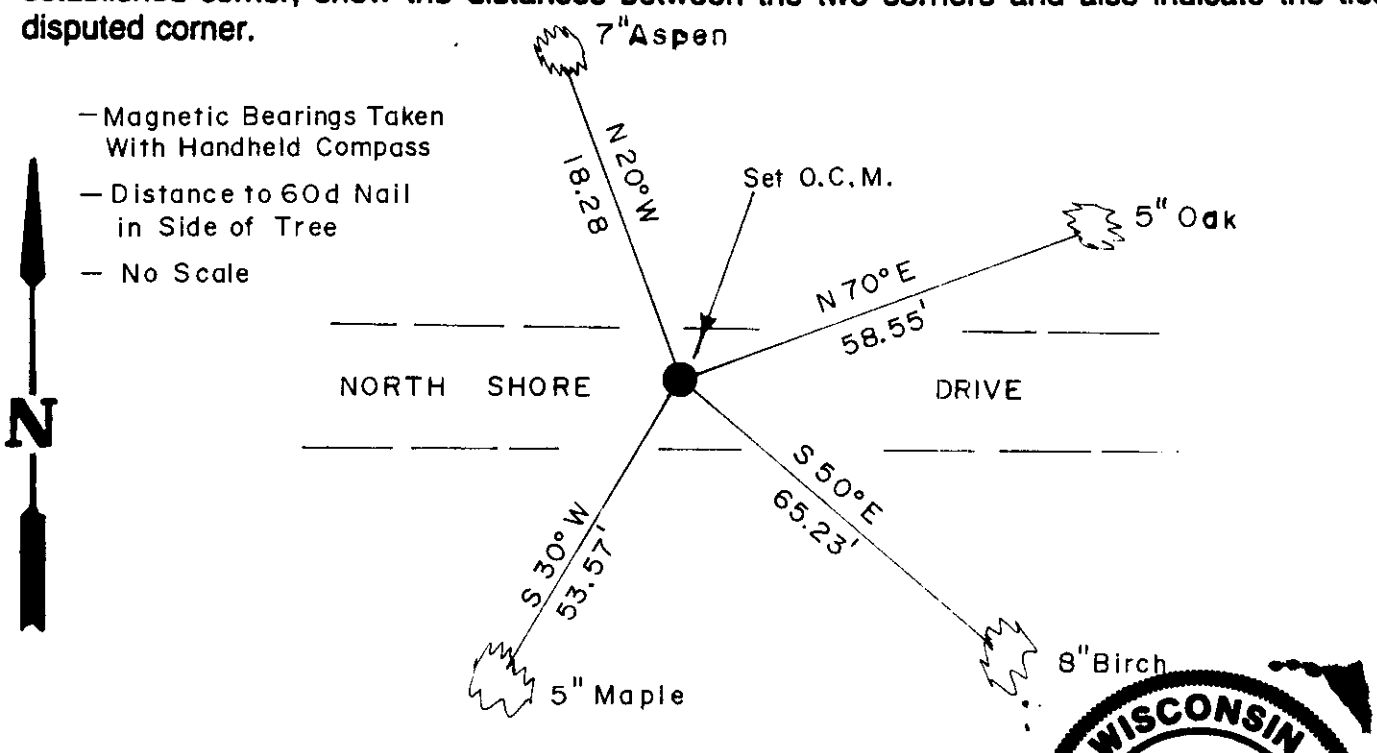
1863- original post set by W.E. Daughterty. Original B.T.'s 8" Birch N 3 E, 17 Lks.
10" W. Pine, S 14 W, 21 Lks

1889- B.F. Dorr found original post and B.T.s in place.

1969- survey by Sy Poskie showing location of corner did not mention what was set.

1977- survey by Bandow showing the location of the corner being marked by a iron pie that was found in place by himself.

(c) (d) (e) Plan view of corner with ties to at least 4 witness monuments. If in disagreement with previously established corner, show the distances between the two corners and also indicate the ties to the disputed corner.



(i) I, Devon Vanden Heuvel
(type or print name) certify that the corner location on this record was determined by me or under my direction and control and that this U.S. Public Land Survey Monument Record is correct and complete to the best of my knowledge and belief.



Devon Vanden Heuvel 8-18-93
Signature Date

3609042000 Stamp

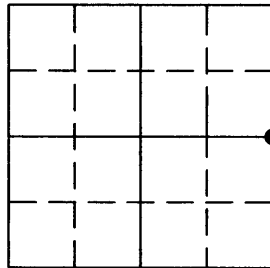
Index No. C-13

U.S. PUBLIC LAND SURVEY MONUMENT RECORD

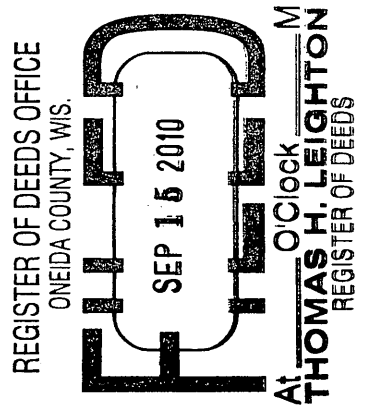
Note: This form is intended and designed to fulfill all requirements of the Wisconsin Administrative Code, Chapter A-E 7.08 U.S. Public Land Monument Record (3)(a)(b)(c)(d)(e)(f)(g)(h)(i). An additional sheet may be added if necessary to conform with said requirements.

(a) CORNER LOCATION: Oneida County Corner I.D. No.:

East 1/4 Corner, Sec. 4 3609042000
Township 36 North
Range 9 East
Town of Pelican
County of Oneida



SECTION 4



(f)(g)(h) DESCRIPTION OF MONUMENT FOUND AT THIS CORNER AND IF IT WAS ACCEPTED, STATE ALL EVIDENCE (MATERIAL, TESTIMONIAL, OCCUPATIONS, PLATS, RECORDS, OTHER MONUMENTS) USED AS A BASIS FOR ESTABLISHING LOCATION. IF NOT ACCEPTED OF IF NOTHING WAS FOUND, STATE EVIDENCE USED AS BASIS FOR ESTABLISHING LOCATION. IF REESTABLISHED THROUGH LOST CORNER PROPORTIONATE METHODS, INDICATE ALL MONUMENTS, DISTANCES AND DIRECTIONS USED TO ESTABLISH. INDICATE TYPE OF MONUMENT AND SIGN POST FOUND OR SET.

- 1863 - W.E. Daugherty set post. Set ties: 8" birch, N3°W, 17 links, 10" white pine, S14°E, 21 links
- 1889 - B.F. Dorr found original post and BTs in place.
- 1969 - Survey by Sy Poskie showing location of corner did not mention what was set.
- 1977 - Survey by Badow showing the location of the corner being marking by an iron pipe that was found in place by himself
- 1993 - Devon Vanden Heuvel found 1" dia. iron pipe at the corner location. Replaced the pipe with an Oneida County capped monumen

The above information is from the tie sheet by Devon Vanden Heuvel, dated 8/13/93

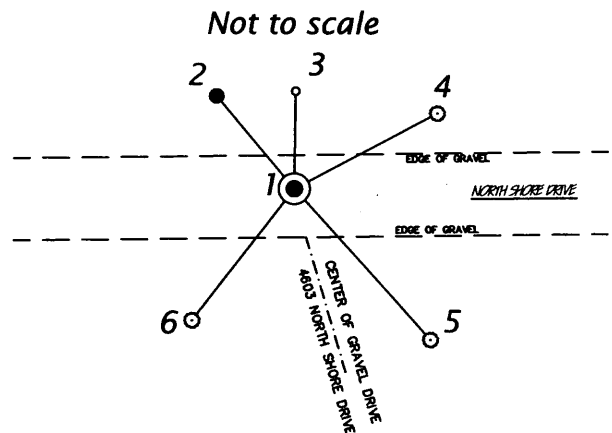
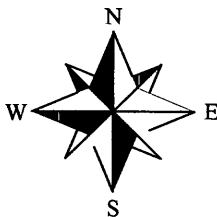
August 26, 2010 - Anthony R. Jones, Registered Land Surveyor, finds Oneida County monument in road, as set by Vanden Heuvel, shown in the below diagram.

September 9, 2010 - Re-set 4" spike in new blacktop at location shown below based on ties

(c)(d)(e) PLAN VIEW OF CORNER WITH TIES TO AT LEAST 4 WITNESS MONUMENTS. IF IN DISAGREEMENT WITH PREVIOUSLY ESTABLISHED CORNER, SHOW THE DISTANCE BETWEEN THE TWO CORNERS AND ALSO INDICATE THE TIES TO THE DISPUTED CORNER.

BEARINGS BASED ON THE WEST LINE OF THE SE 1/4 OF SECTION 34-37-10 AND ONEIDA COUNTY GPS INFORMATION ACCEPTED AS: N 00°24'46" E.

- 1: RESET 4" SPIKE IN NEW PAVEMENT ABOVE FOUND ALUMINUM ONIEDA COUNTY CAP BY VANDEN HEUVEL, 1993
- 2: SET 5/8" BY 30" IRON PIPE WITH YELLOW REFERENCE CAP N 39°45'19" W, 38.73' SET PLASTIC POST
- 3: FOUND 1" IRON PIPE N 00°40'34" W, 31.40'
- 4: SET NAIL IN 7" OAK N 61°46'51" W, 51.66"
- 5: FOUND NAIL IN 8" BIRCH S 42°02'43" E, 65.09' (65.23')
- 6: SET NAIL IN 8" OAK S 37°24'23" W, 53.44'



Distances are to 60d spike in side of tree. Bearings are to center of trees

(i) I, ANTHONY R. JONES, REGISTERED LAND SURVEYOR NO. S-2508 HEREBY CERTIFY THAT THE CORNER LOCATION ON THIS RECORD WAS DETERMINED BY ME OR UNDER MY DIRECTION AND CONTROL AND THAT THIS U.S. PUBLIC LAND SURVEY MONUMENT RECORD IS CORRECT AND COMPLETE TO THE BEST OF MY KNOWLEDGE AND BELIEF.

Anthony R. Jones
SIGNATURE

9/10/2010
DATE



INDEX NO. C-13

3609042000