

# U.S. PUBLIC LAND SURVEY MONUMENT RECORD

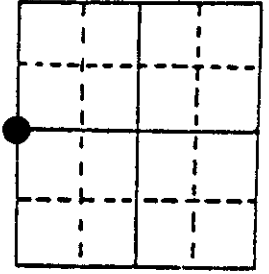
Note: This form is intended and designed to fulfill all requirements of Wisconsin Administrative Code, Chapter A-E 7.08 U.S. Public Land Survey Monument Record (3) (a) (b) (c) (d) (e) (f) (g) (h) (i). An additional sheet may be added if necessary to conform with said requirements.

(a) Corner location: Township 36 North

Range 9 East

Town/City/Village Pelican

County Oneida



Section 4

(b) (f) (g) (h) Description of monument found at this corner and if it was accepted, state all evidence (material, testimonial, occupational, plats, records, other monuments) used as a basis for accepting. If not accepted or if nothing was found, state evidence used as basis for establishing location. If reestablished through lost corner proportionate methods, indicate all monuments, distances and directions used to establish. Indicate type of monument found or set and sign post.

- 1863 William Daugherty South between 4 and 5 41.29 set 1/4 Post Birch 7" S 25 W 50, Cedar 10 S 2 E 42.
- 1889 Dorr at corner new BT Pine 8 N 1/4 W 41.
- 1904 D.H. Vaughan at corner found Dorr's B.T.
- 1977 William Immich found iron pipe.
- 1989 William Badow found 1 1/2" iron pipe. Replaced it with Oneida County Aluminum Monument and witnessed as shown below. White survey marker post N 29° W 8.75'.

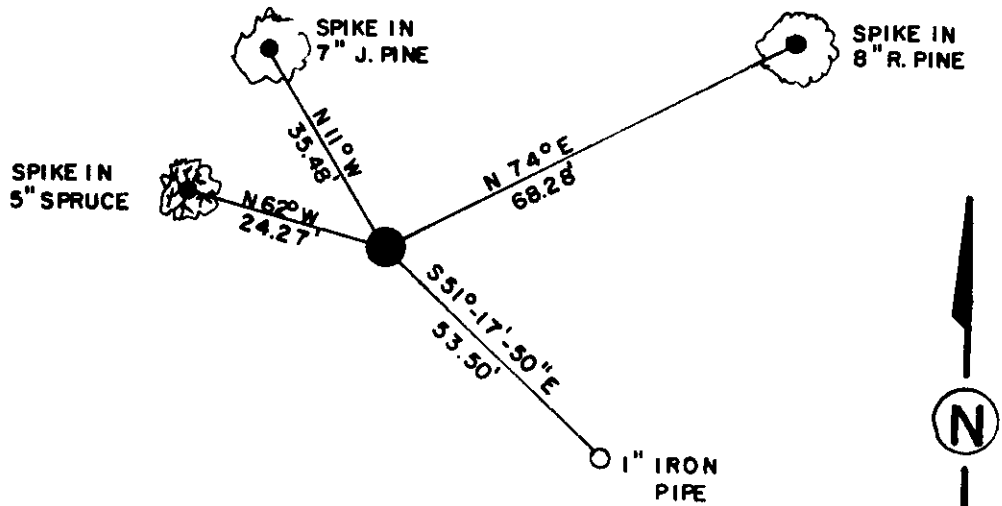
(c) (d) (e) Plan view of corner with ties to at least 4 witness monuments. If in disagreement with previously established corner, show the distances between the two corners and also indicate the ties to the disputed corner.

**NOTE:**

ALL MEASUREMENTS  
TAKEN FROM 6" SPIKE  
IN SIDE OF TREES

BEARINGS TAKEN FROM  
HANDHELD MAGNETIC  
COMPASS

NO SCALE



(i) I, William E. Badow  
(type or print name) certify that the corner location on this record was determined by me or under my direction and control and that this U.S. Public Land Survey Monument Record is correct and complete to the best of my knowledge and belief.

William E. Badow                      12-29-89  
Signature    Date



Index No. C 9