

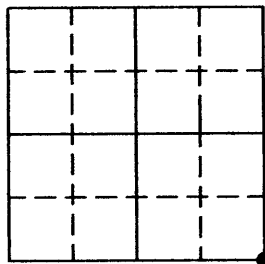
U.S. PUBLIC LAND SURVEY MONUMENT RECORD

Note: This form is intended and designed to fulfill all requirements of the Wisconsin Administrative Code, Chapter A-E 7.08 U.S. Public Land Monument Record (3)(a)(b)(c)(d)(e)(f)(g)(h)(i). An additional sheet may be added if necessary to conform with said requirements.

(a) CORNER LOCATION: Oneida County Corner I.D. No.:

SE Corner, Sec. 6
Township 36 North
Range 9 East
Town of Pelican (City of Rhinelander)
County of Oneida

3609060000



SECTION 6

(f)(g)(h) DESCRIPTION OF MONUMENT FOUND AT THIS CORNER AND IF IT WAS ACCEPTED, STATE ALL EVIDENCE (MATERIAL, TESTIMONIAL, OCCUPATIONS, PLATS, RECORDS, OTHER MONUMENTS) USED AS A BASIS FOR ESTABLISHING LOCATION. IF NOT ACCEPTED OF IF NOTHING WAS FOUND, STATE EVIDENCE USED AS BASIS FOR ESTABLISHING LOCATION. IF REESTABLISHED THROUGH LOST CORNER PROPORTIONATE METHODS, INDICATE ALL MONUMENTS, DISTANCES AND DIRECTIONS USED TO ESTABLISH. INDICATE TYPE OF MONUMENT AND SIGN POST FOUND OR SET.

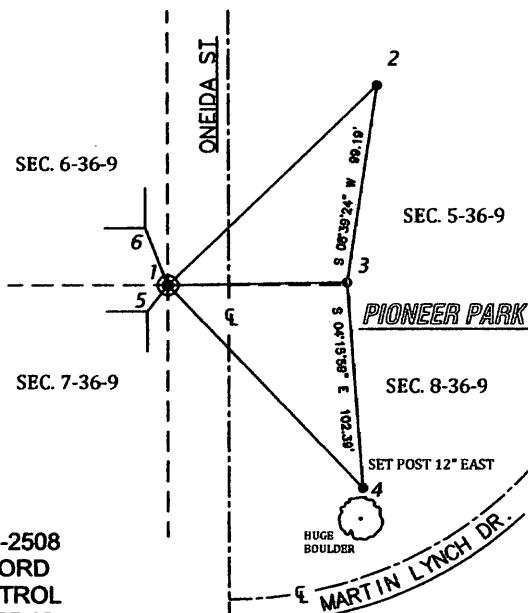
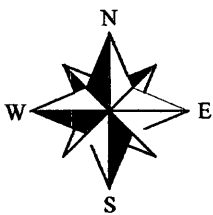
1863 - W.E. DOUGHERTY SET POST WITH TIES: 15" YELLOW PINE, 588"W, 147 LKS, 10" WHITE PINE, 574"W, 128 LKS
1889 - DORR AT CORNER. 10" YELLOW PINE, 571"W, 1.68 CHAINS, ORIGINAL OTHER GONE
1993 - W.E. BANDOW FOUND STONE WITH "X" ON TOP. SET TIES: FOUNDATION CORNER, N15"W, 30.65', FOUNDATION CORNER S38"W, 16.53', SPIKE IN 26" ELM, N35"E, 36.48', SPIKE IN 30" ELM, N60"E, 21.75'.
JUNE 3, 2010 - ANTHONY R. JONES, RLS S-2508, FOUND GRANITE BOULDER WITH CHISELED "X". TIES TO FOUNDATIONS MATCH BANDOW'S 1993 TIES. BOTH ELM TREES HAVE BEEN COMPLETELY REMOVED. SET NEW TIES EAST OF ONEIDA AVE. AS SHOWN IN THE DIAGRAM BELOW

NOTE: THIS MARKER HAS BEEN USED, ACCEPTED AND MAPPED BY AREA SURVEYORS FOR MANY YEARS. I HAVE ACCEPTED IT AS THE CORNER OF RECORD.

(c)(d)(e) PLAN VIEW OF CORNER WITH TIES TO AT LEAST 4 WITNESS MONUMENTS. IF IN DISAGREEMENT WITH PREVIOUSLY ESTABLISHED CORNER, SHOW THE DISTANCE BETWEEN THE TWO CORNERS AND ALSO INDICATE THE TIES TO THE DISPUTED CORNER.

BEARINGS BASED ON THE WEST LINE OF THE NE 1/4 OF SECTION 7-36-9 AND ONEIDA COUNTY GPS INFORMATION ACCEPTED AS: N 01°07'59" W.

- 1: CHISELED "x" IN BOULDER, USED AND ACCEPTED BY OTHERS
- 2: SET 1 1/4" x 18" IRON PIPE N 46°08'07" E, 143.41'
- 3: SET 1 1/4" x 18" IRON PIPE N 89°09'01" E, 88.47'
- 4: SET 1 1/4" x 18" IRON PIPE S 43°37'41" E, 139.25'
- 5: CORNER OF FOUNDATION, HOUSE No. 912 ONEIDA AVE. S 38° E, 16.62' (BANDOW)
- 6: CORNER OF FOUNDATION, HOUSE No. 904 ONEIDA AVE. N 15° W, 30.65' (BANDOW)



NOTE: IRON PIPES (2,3 AND 4) ARE INTERVISIBLE IF CORNER NEEDS TO BE RESET

(i) I, ANTHONY R. JONES, REGISTERED LAND SURVEYOR NO. S-2508 HEREBY CERTIFY THAT THE CORNER LOCATION ON THIS RECORD WAS DETERMINED BY ME OR UNDER MY DIRECTION AND CONTROL AND THAT THIS U.S. PUBLIC LAND SURVEY MONUMENT RECORD IS CORRECT AND COMPLETE TO THE BEST OF MY KNOWLEDGE AND BELIEF.

Anthony R. Jones
SIGNATURE REGISTER OF DEEDS OFFICE ONEIDA COUNTY, WIS. DATE 7/6/10

FILED
JUL 23 2010
At _____ O'Clock _____ M
THOMAS H. LEIGHTON
REGISTER OF DEEDS

WISCONSIN
ANTHONY R. JONES
S-2508
RHINELANDER
WIS.
LAND SURVEYOR
3609 06 00 00

INDEX NO. E-5