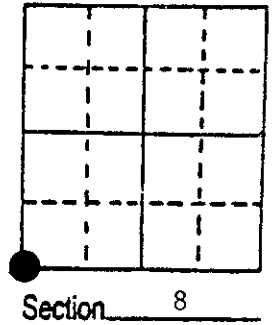


U.S. PUBLIC LAND SURVEY MONUMENT RECORD

Note: This form is intended and designed to fulfill all requirements of Wisconsin Administrative Code, Chapter A-E 7.08 U.S. Public Land Survey Monument Record (3) (a) (b) (c) (d) (e) (f) (g) (h) (i). An additional sheet may be added if necessary to conform with said requirements.

(a) Corner location: Township 36 North
 Range 9 East ~~West~~

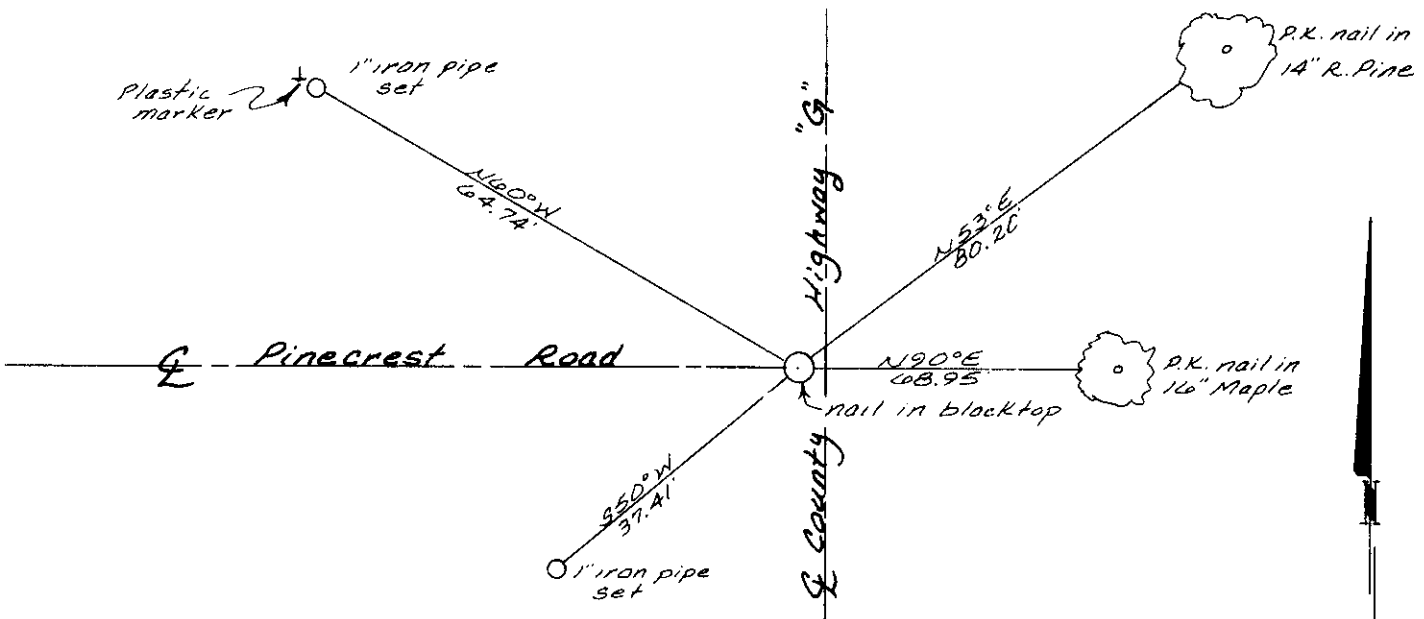
Town/City/Village Pelican
 County Oneida



(b) (f) (g) (h) Description of monument found at this corner and if it was accepted, state all evidence (material, testimonial, occupational, plats, records, other monuments) used as a basis for accepting. If not accepted or if nothing was found, state evidence used as basis for establishing location. If reestablished through lost corner proportionate methods, indicate all monuments, distances and directions used to establish. Indicate type of monument found or set and sign post.

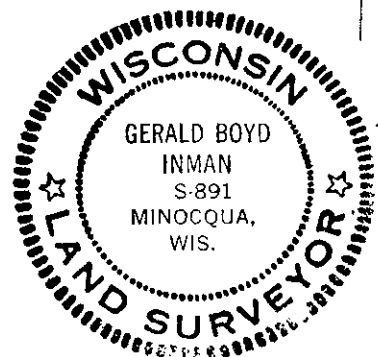
- 1863 - Corner was originally set by Wm. E. Dougherty. He tied the following bearing trees: 14" Maple, S37°W, 26 lks; 10" Aspen, N82°E, 25 lks.
- 1973 - Inman Engineering found & accepted a 1" iron pipe in the pavement 6' west of centerline County Highway "G" at Pinecrest Road.
- 1973 - Wisconsin Department of Transportation found and accepted the 1" iron pipe.
- 1989 - I found a nail in the pavement over the 1" iron pipe 6' west of centerline. Left the nail in place.

(c) (d) (e) Plan view of corner with ties to at least 4 witness monuments. If in disagreement with previously established corner, show the distances between the two corners and also indicate the ties to the disputed corner.



(i) I, Gerald B. Inman
 (type or print name) certify that the corner location on this record was determined by me or under my direction and control and that this U.S. Public Land Survey Monument Record is correct and complete to the best of my knowledge and belief.

Gerald B. Inman Signature
 October 27, 1989 Date



Index No. J 5

3609070000

U.S. PUBLIC LAND SURVEY MONUMENT RECORD

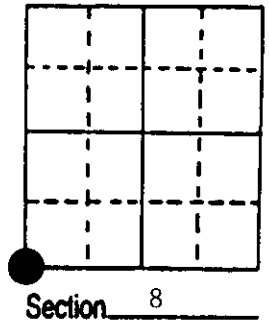
Note: This form is intended and designed to fulfill all requirements of Wisconsin Administrative Code, Chapter A-E 7.08 U.S. Public Land Survey Monument Record (3) (a) (b) (c) (d) (e) (f) (g) (h) (i). An additional sheet may be added if necessary to conform with said requirements.

(a) Corner location: Township 36 North

Range 9 East/West

Town/City/Village Pelican

County Oneida



(b) (f) (g) (h) Description of monument found at this corner and if it was accepted, state all evidence (material, testimonial, occupational, plats, records, other monuments) used as a basis for accepting. If not accepted or if nothing was found, state evidence used as basis for establishing location. If reestablished through lost corner proportionate methods, indicate all monuments, distances and directions used to establish. Indicate type of monument found or set and sign post.

1863 - Wm. Daugherty established this corner and set wood post with BTs:
 15" Red Pine, S88°W, 147 Links 10" White Pine, S74°W, 128 Links

8/17/1892 - Dorr used this corner to develop the Plat of "Shaw & Dorr Outlots":
 He made two new BTs:
 24" Hemlock, N72°W, 52½ Links (34.65')
 10" Hemlock, N58°E, 41 Links (27.06')

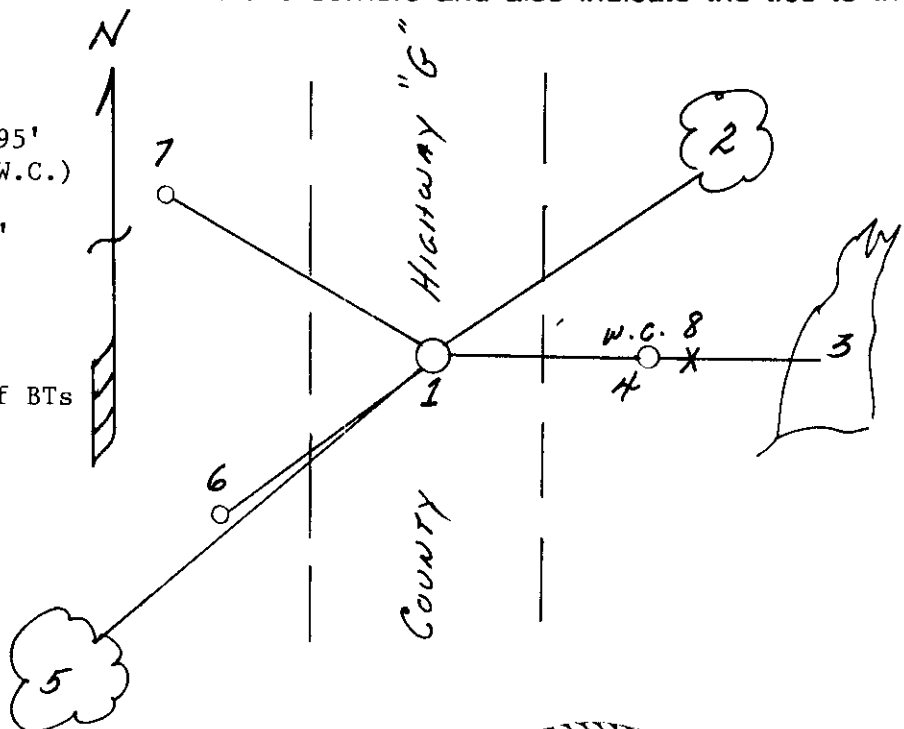
10/27/1989 - Gerald Inman restored this corner and made new BTs:
 14" Red Pine, N53°E, 80.2' 16" Red Maple, East, 68.95'
 1" Iron Pipe, N60°W, 64.74' 1" Iron Pipe, S50°W, 37.41'

4/29/1996 - Milo E. Stefan found PK nail in road surface, with Red Pine and Southwest iron pipe okay. Maple BT is dead and Northwest iron pipe has been grubbed out. We reset the iron pipe, made one new BT and set a W.C.

(c) (d) (e) Plan view of corner with ties to at least 4 witness monuments. If in disagreement with previously established corner, show the distances between the two corners and also indicate the ties to the disputed corner.

- 1) PK nail in blacktop
- 2) 14" Red Pine, N53°E, 80.20'
- 3) 16" Red Maple Snag, East, 68.95'
- 4) 2" x 30" Aluminum monument (W.C.) East 58.97'
- 5) 8" Scotch Pine, S50°W, 73.99'
- 6) 1" Iron pipe, S50°W, 37.40'
- 7) 1" Iron Pipe, N60°W, 63.84'
- 8) Plastic Sign Post, East, 60'

Distances from nail in side of BTs
 Stump blaze scribed "BT"
 BT tags on face of each BT



(i) I, Milo E. Stefan
 (type or print name) certify that the corner location on this record was determined by me or under my direction and control and that this U.S. Public Land Survey Monument Record is correct and complete to the best of my knowledge and belief.

Milo E. Stefan
 Signature

June 18, 1996
 Date



3609070000

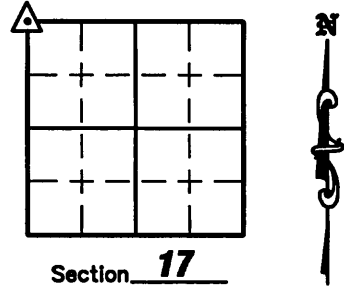
Stamp

Index No. J-5

U.S. PUBLIC LAND SURVEY MONUMENT RECORD

NOTE: This form is intended and designed to fulfill all requirements of Wisconsin Administrative Code, Chapter A-E 7 .08 U.S. Public Land Survey Monument Record (3)(a)(b)(c)(d)(e)(f)(g)(h)(i). An additional sheet may be added if necessary to conform with said requirements.

(a) Corner location: Township 36 North
 Range 9 East
 Town of Pelican
 County of Oneida



Section 17

(b)(f)(g)(h) Description of monument found at this corner and if it was accepted, state all evidence (material, testimonial, occupation, plats, records, other monuments) used as a basis for accepting. If not accepted or if nothing was found, state evidence used as a basis for establishing location. If reestablished through lost corner proportionate methods, indicate all monuments, distances and directions used to establish. Indicate type of monument found or set and sign post.

1863 - William Daugherty established this corner and set wood post with BT's: 15" Red Pine, S88°W, 147 links; 10" White Pine, S74°W, 128 links.

August 17, 1892 - Dorr used this corner to develop the Plat of "Shaw and Dorr Outlots" and set new BT's: 24" Hemlock, N72°W, 52-1/2 links (34.65'); 10" Hemlock, N58°E, 41 links (27.06')

October 27, 1989 - Gerald Inman restored this corner and made new BT's: 14" Red Pine, N53°E, 80.2'; 16" Red Maple, East, 68.95'; 1" iron pipe, N60°W, 64.74'; 1" iron pipe, S50°W, 37.41'

April 29, 1996 - Milo E. Stefan found P.K. nail in road surface, with Red Pine and Southwest iron pipe okay. Maple BT dead and the Northwest iron pipe has been grubbed out. He reset the iron pipe, made one new BT and set Oneida County Aluminum Witness Corner 58.97' East of corner.

July 10, 2008 - Due to road construction Nicolet Surveyors, Inc. was contacted by the Oneida County Land Information Office to preserve the location of this survey marker. Jonathan W. Dulin found a P.K. nail 6' West of the centerline of County Highway "G" along with 2 bearing trees, an iron pipe and an Oneida County Aluminum Witness Corner.

November 7, 2008 - After road construction was complete we visited corner, checked the ties and set a survey nail stamped "SURVEY MARK".

(c)(d)(e) Plan view of corner with ties to at least 4 witness monuments. If in disagreement with previously established corner, show the distances between the two corners and also indicate the ties to the disputed corner.

Legend

- Set Survey Nail Stamped "SURVEY MARK"
- Found 1" Iron Pipe
- Found Oneida County Aluminum Witness Monument

11" Scotch Pine
 Nail found in SE side of tree 4' off the ground. BT sign placed on tree.



Scale: 1"=50'

Pine Crest Road

County Highway "G"

County Highway "G"

17" Red Pine
 Nail found in NW side of tree along with a BT sign.



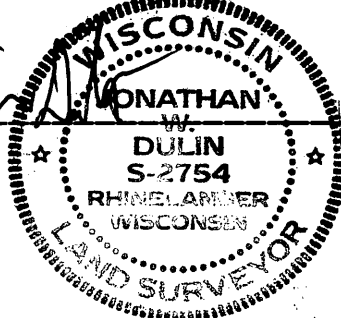
Witness Corner
 Plastic sign post lies 1' East

Notes:

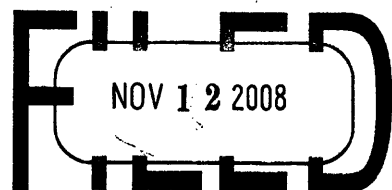
1. All bearings taken with a compass and distances measured with a tape.
2. Corner lies 6' West of the centerline of County Highway "G".

(i) I, Jonathan W. Dulin, certify that the corner location on this record was determined by me under my direction and control and that this U.S. Public Land Survey Monument is correct and complete to the best of my knowledge and belief.

Signature Jonathan W. Dulin Date 11/7/08



REGISTER OF DEEDS OFFICE
 ONEIDA COUNTY, WIS.



At _____ O'Clock _____ M
THOMAS H. LEIGHTON
 REGISTER OF DEEDS

3609070000

Index No. J-5