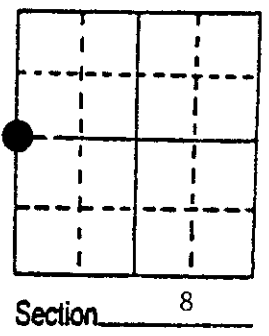


U.S. PUBLIC LAND SURVEY MONUMENT RECORD

Note: This form is intended and designed to fulfill all requirements of Wisconsin Administrative Code, Chapter A-E 7.08 U.S. Public Land Survey Monument Record (3) (a) (b) (c) (d) (e) (f) (g) (h) (i). An additional sheet may be added if necessary to conform with said requirements.

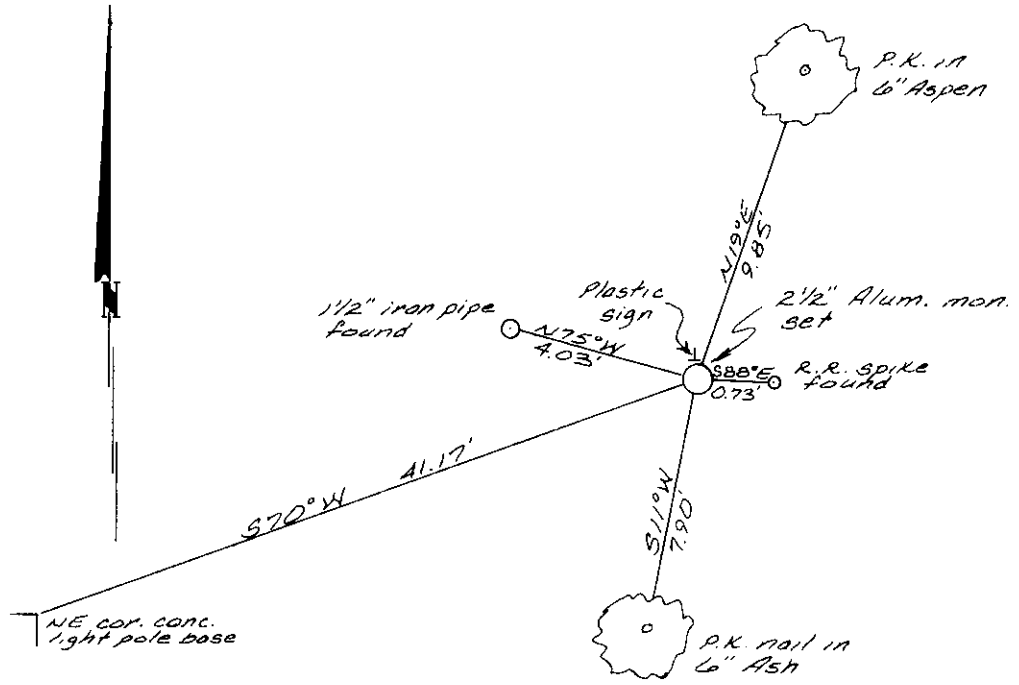
(a) Corner location: Township 36 North
 Range 9 East/West
 Town/City/Village Pelican
 County Oneida



(b) (f) (g) (h) Description of monument found at this corner and if it was accepted, state all evidence (material, testimonial, occupational, plats, records, other monuments) used as a basis for accepting. If not accepted or if nothing was found, state evidence used as basis for establishing location. If reestablished through lost corner proportionate methods, indicate all monuments, distances and directions used to establish. Indicate type of monument found or set and sign post.

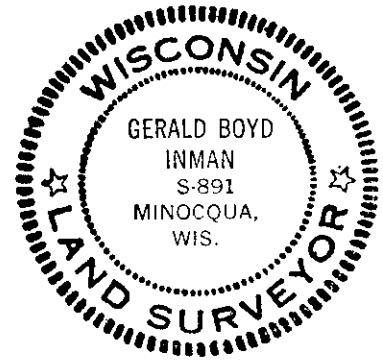
- 1863 - Corner was originally set by Wm. E. Dougherty. He tied the following bearing trees: 10" Birch, S57°W, 9 lks; 10" Sugar, N52°E, 25 lks.
- 1973 - Inman Engineering found and accepted a 1" iron pipe.
- 1973 - Wisconsin Department of Transportation found and accepted the 1" iron pipe.
- 1989 - I found a 1½" iron pipe near the 1973 corner location. The 1" iron pipe used and accepted in 1973 was gone. I set a 2½" x 30" alum. mon. with cap in the 1973 corner location based on previous coordinates from survey by Inman Engineering.

(c) (d) (e) Plan view of corner with ties to at least 4 witness monuments. If in disagreement with previously established corner, show the distances between the two corners and also indicate the ties to the disputed corner.



(i) I, Gerald B. Inman
 (type or print name) certify that the corner location on this record was determined by me or under my direction and control and that this U.S. Public Land Survey Monument Record is correct and complete to the best of my knowledge and belief.

Gerald B. Inman Signature October 27, 1989 Date



Index No. 5

3609072000