

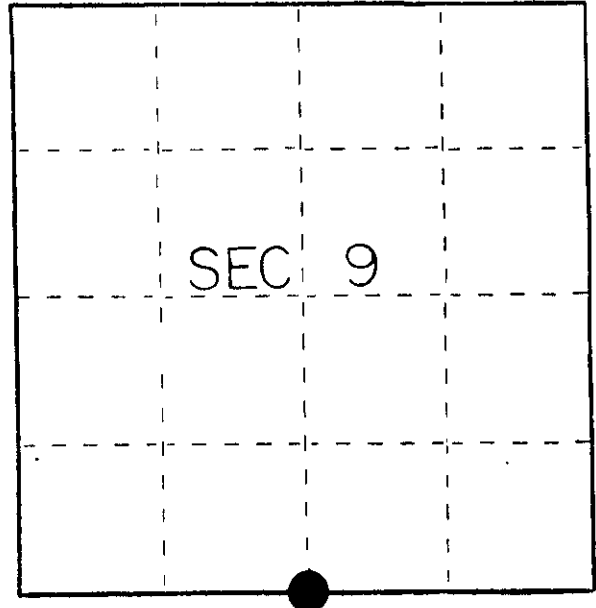
U. S. PUBLIC LAND SURVEY MONUMENT RECORD

INSTRUCTIONS: This record shall show the location of the corner and shall include all of the following nine elements (a through i).

- (a) Identify the corner by reference to the U.S. public land survey system.

● = Corner monument restored.

SOUTH 1/4 CORNER, SECTION 9,
T36N, R9E

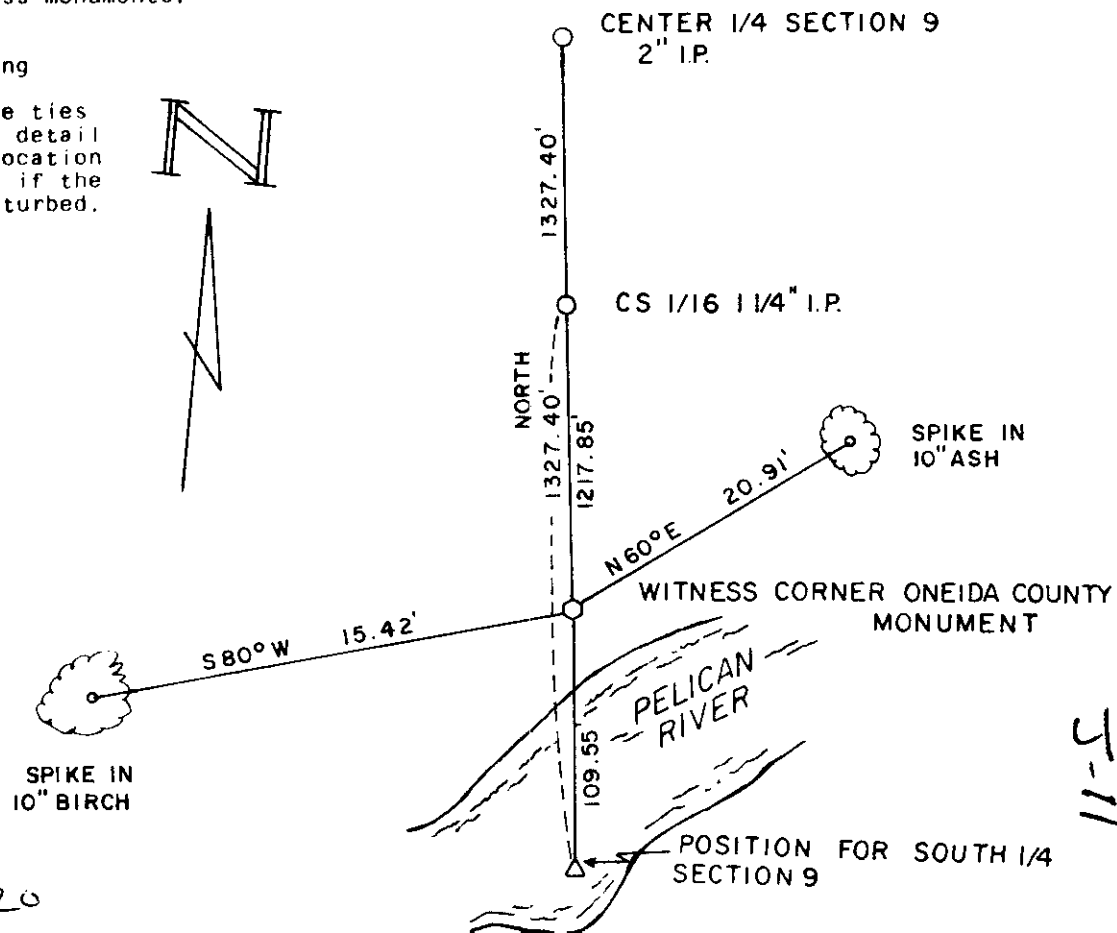


- (b) Describe any record evidence, monument evidence, occupational evidence, testimonial evidence or any other material evidence you considered, and whether the monument was found or placed.

Corner set by Mr. Dougherty in 1883. West between 9 & 16 40.00 set post on left bank river. 11's line 12" 32.77ths, 1 line 0" 1931 16ths. Wm. Vaughn at corner in 1898 & 1909. He found stumps of original trees. ran north to center 40.13 and set 1/16 = 20.06 north of 1/4 corner. I found 1.1. at center and at 1327.40' south of center found 1.1. I set the 1/4 corner position on the line extended 1327.40'. Corner falls in Pelican river. I set an Oneida County monument at 109.55' north of 1/4 corner position.

- (c) In the plan view drawing below, provide reference ties to at least 4 witness monuments, or, if the location is within a municipality, to at least 2 witness monuments. (Witness monuments shall be made of concrete, natural stone, iron or other equally durable material.) Describe witness monuments.

- (d) Show a plan view drawing depicting the relevant monuments and reference ties which is sufficient in detail to enable accurate relocation of the corner monument if the corner monument is disturbed. Indicate north.



3609090020

5-11

