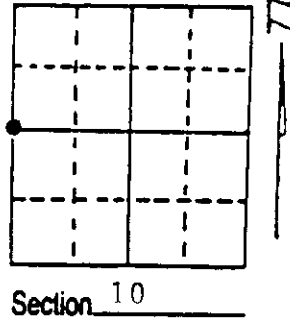


U.S. PUBLIC LAND SURVEY MONUMENT RECORD

Note: This form is intended and designed to fulfill all requirements of Wisconsin Administrative Code, Chapter A-E 7.08 U.S. Public Land Survey Monument Record (3) (a) (b) (c) (d) (e) (f) (g) (h) (i). An additional sheet may be added if necessary to conform with said requirements.

(a) Corner location: Township 36 North
 Range 9 East

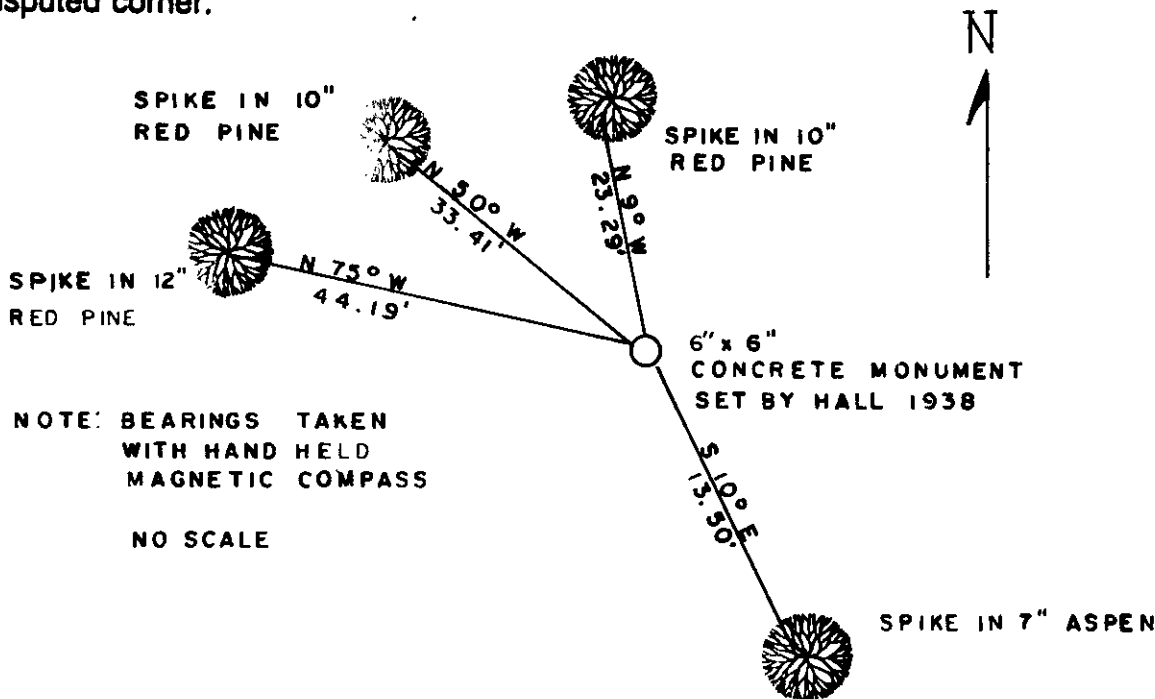
Town/City/Village Pelican
 County Oneida



(b) (f) (g) (h) Description of monument found at this corner and if it was accepted, state all evidence (material, testimonial, occupational, plats, records, other monuments) used as a basis for accepting. If not accepted or if nothing was found, state evidence used as basis for establishing location. If reestablished through lost corner proportionate methods, indicate all monuments, distances and directions used to establish. Indicate type of monument found or set and sign post.

1863-William Daugherty set post 10" White Pine S 39 degrees West 19 links, 8" Birch N 64 degrees East 17 links
 1903-Vaughan found post
 1938-Hall set concrete monument
 1977-William E. Bandow found concrete monument
 1982-William E. Bandow found concrete monument
 1983-Elton A. Peterson found 10x10 inch concrete monument
 1984-Mike Romportyl found concrete monument
 1986-William E. Bandow found concrete monument
 1989-William E. Bandow found concrete monument with brass cap and witnessed as shown below:

(c) (d) (e) Plan view of corner with ties to at least 4 witness monuments. If in disagreement with previously established corner, show the distances between the two corners and also indicate the ties to the disputed corner.



NOTE: BEARINGS TAKEN WITH HAND HELD MAGNETIC COMPASS
 NO SCALE

(i) I, William E. Bandow
 (type or print name) certify that the corner location on this record was determined by me or under my direction and control and that this U.S. Public Land Survey Monument Record is correct and complete to the best of my knowledge and belief.

William E. Bandow 3-11-93
 Signature Date



3609092000

Stamp

Index No. G-13