

# U. S. PUBLIC LAND SURVEY MONUMENT RECORD

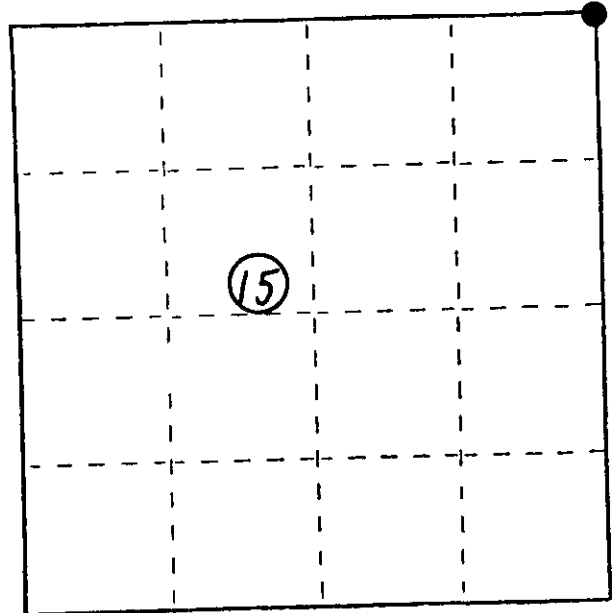
**INSTRUCTIONS:** This record shall show the location of the corner and shall include all of the following nine elements (a through i).

- (a) Identify the corner by reference to the U.S. public land survey system.  
 ● = Corner monument restored.

Section Corner common to sections 10, 11, 14 & 15, Township 36 North, Range 9 East, Oneida County, Wis.

Compared with all record data and accepted as correct.

Robert H. Winat  
 Robert H. Winat, Oneida Co. Surveyor  
 4 May 1983



- (b) Describe any record evidence, monument evidence, occupational evidence, testimonial evidence or any other material evidence you considered, and whether the monument was found or placed.

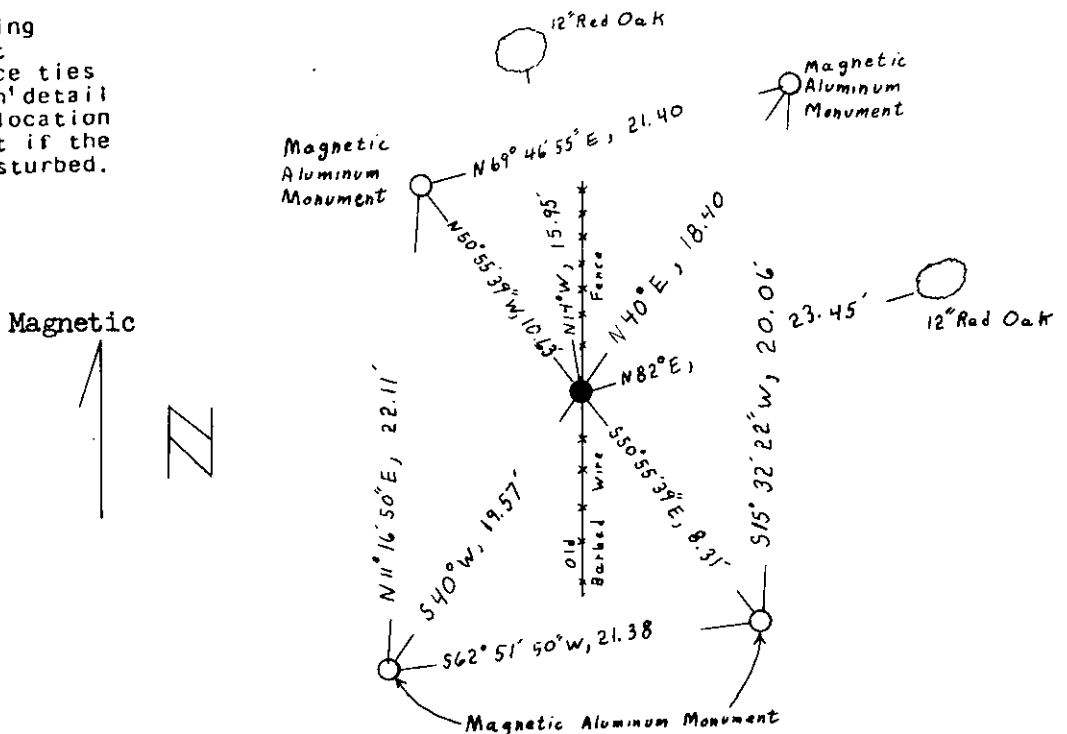
D.H. Vaughan's survey of 1902 and 1908 as recorded Oneida Co. Surveyor records, Pg. 199.

C.S.M #198 and 576 and plat of Alburmi Shores.

Found a 1/2" rebar with a D.O.T. plastic cap driven thru a boulder (broken) in old barbed wire fence bearing n-s

- (c) In the plan view drawing below, provide reference ties to at least 4 witness monuments, or, if the location is within a municipality, to at least 2 witness monuments. (Witness monuments shall be made of concrete, natural stone, iron or other equally durable material, except wood.) Describe witness monuments.

- (d) Show a plan view drawing depicting the relevant monuments and reference ties which is sufficient in detail to enable accurate relocation of the corner monument if the corner monument is disturbed. Indicate north.



3609100000

L-11-5

Describe any material discrepancy between the location of the corner as restored or reestablished and the location of that corner as previously restored or reestablished by distance and direction. Show the discrepancy on the plan view drawing under (d), above. Show the distances between the corner as previously restored or reestablished and (1) the corner as restored or reestablished, and (2) to at least 2 of the witness monuments shown on the drawing in (d), above.

NA

(f) Was the corner restored through acceptance of (1) an obliterated evidence location, or, (2) a found perpetuated location?

Found perpetuated location accepted.

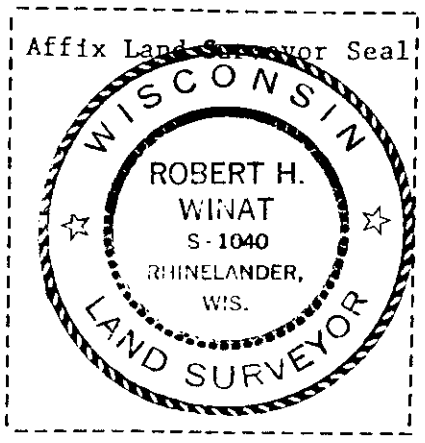
(g&h) Was the corner reestablished through lost corner proportionate methods? If so, show the method, including the directions and distances to other public land survey corners used as evidence or used for proportioning in determining the corner location?

NA

REGISTER'S OFFICE }  
Oneida County, Wis. }

Received for Record the 28 day of  
July A.D. 1983 at  
2:00 o'clock P. M. and recorded in  
Vol. \_\_\_\_\_ on page \_\_\_\_\_

Donis Verage Kuehn  
Register  
By Cynthia A. Pitts  
Deputy



(i) I, Robert H. Winat, S-1040  
(type or print name) certify that the corner location shown  
on this record was determined by me or under my direction and  
control and that this U.S. Public Land Survey Monument Record is  
correct and complete to the best of my knowledge and belief.

Robert H. Winat 29 April '83  
Signature Date

Stock No. 26273

# U. S. PUBLIC LAND SURVEY MONUMENT RECORD

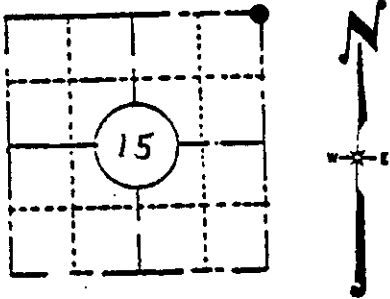
**INSTRUCTIONS :**

This record shall show the location of the corner and shall include all of the following nine elements (a through i).

- (a) Identify the corner by reference to the U.S. public land survey system.

Section corner common to Sections 10, 11, 14 & 15, Township 36 North, Range 9 East, Oneida County, Wisconsin.

William E. Daugherty, Deputy Surveyor, July 30th to August 11th, 1863. From the south-east corner of Section 15, North Var. 8°E, 80.00 ch. (5,280 ft)



LOCATION SKETCH  
(Location of landmark indicated by "●")

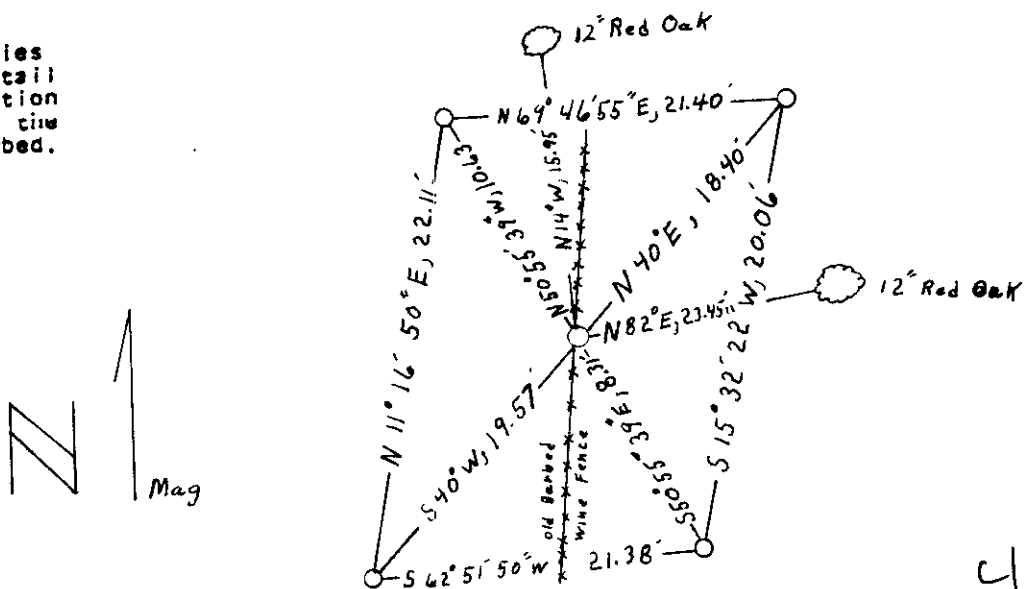
BTs	16" White Pine	S48°E	149 lks. (98.34 ft)
	25" White Pine	N58°W	273 lks. (180.18 ft)

- (b) Describe any record evidence, monument evidence, occupational evidence, testimonial evidence or any other material evidence you considered, and whether the monument was found or placed.

Found that the four magnetic aluminum witness monuments set in previous corner certification, filed 7-28-83. The 1/2" rebar that was set as the corner had been pulled. Set a 2" x 30" magnetic aluminum monument, with a 3" aluminum cap, to replace cap stamped: ONEIDA COUNTY SURVEY MARKER, T36N, R9E, S10, S11, S15, S14, 1983, S-1040.

- (c) In the plan view drawing below, provide reference ties to at least 4 witness monuments, or, if the location is within a municipality, to at least 2 witness monuments. (Witness monuments shall be made of concrete, natural stone, iron or other equally durable material, except wood.) Describe witness monuments.

- (d) Show a plan view drawing depicting the relevant monuments and reference ties which is sufficient in detail to enable accurate relocation of the corner monument if the corner monument is disturbed. Indicate north.



All monuments a magnetic aluminum

3609100000

11-17

(c) Describe any material discrepancy between the location of the corner as restored or reestablished and the location of that corner as previously restored or reestablished by distance and direction. Show the discrepancy on the plan view drawing under (c), above. Show the distances between the corner as previously restored or reestablished and (1) the corner as restored or reestablished, and (2) to at least 2 of the witness monuments shown on the drawing in (d), above.

N/A

(f) Was the corner restored through acceptance of (1) an obliterated evidence location, or, (2) a found perpetuated location?

The corner was restored by acceptance of a found perpetuated location.

(g&h) Was the corner reestablished through lost corner proportionate methods? If so, show the method, including the directions and distances to other public land survey corners used as evidence or used for proportioning in determining the corner location?

N/A

REGISTER OF DEEDS OFFICE  
ONEIDA COUNTY, WIS.  
**FILED**  
JUL 1 1986  
At 8:00 O'Clock A.M.  
DORIS VERAGE KUEHN  
REGISTER OF DEEDS

(1) I, Robert H. Winat  
(type or print name) certify that the corner location shown on this record was determined by me or under my direction and control and that this U.S. Public Land Survey Monument Record is correct and complete to the best of my knowledge and belief.

Robert H. Winat 16 Nov. 1983  
Signature Date

