

# U. S. PUBLIC LAND SURVEY MONUMENT RECORD

**I N S T R U C T I O N S :** This record shall show the location of the corner and shall include all of the following nine elements (a through i).

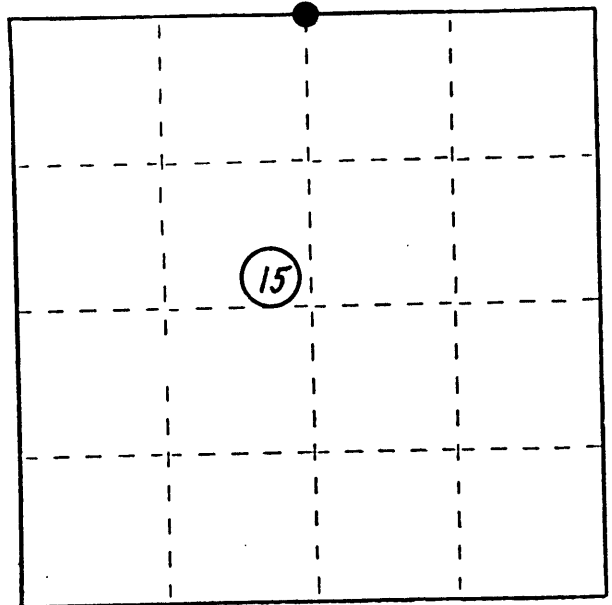
- (a) Identify the corner by reference to the U.S. public land survey system.

○ = Corner monument restored.

The Quarter corner between Sections 10 & 15, Township 36 North, Range 9 East, Oneida County, Wisconsin.

Compared with all record data and accepted as correct.

*Robert H. Winat*  
 Robert H. Winat, Oneida Co. Surveyor  
 4 May 1983



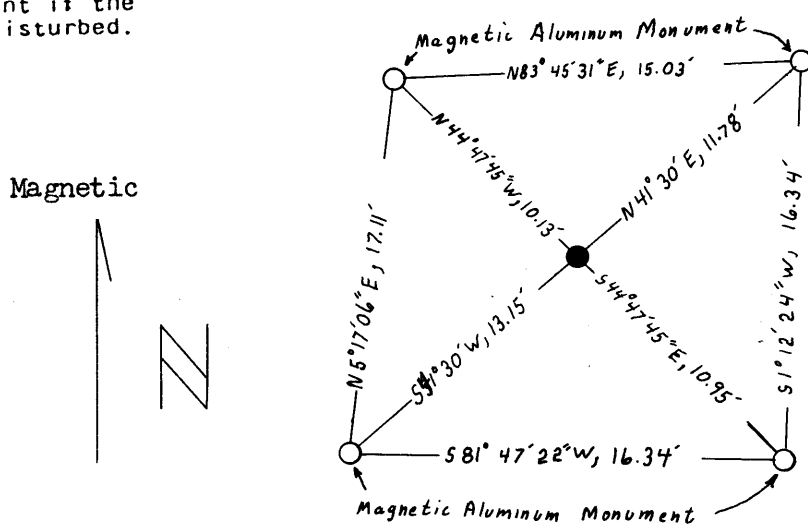
- (b) Describe any record evidence, monument evidence, occupational evidence, testimonial evidence or any other material evidence you considered, and whether the monument was found or placed.

D.H. Vaughan's survey of 1902 and 1908 proportioned this corner. Perpetuated by J. Donohue Engr. survey of June 1923 - found a 4" dia. cast iron cap, marked J. Donohue Engr. Co. with a cross in the center, in a 6" dia. concrete monument. An old barbed wire fence runs east.

C.S.M.# 184

- (c) In the plan view drawing below, provide reference ties to at least 4 witness monuments, or, if the location is within a municipality, to at least 2 witness monuments. (Witness monuments shall be made of concrete, natural stone, iron or other equally durable material, except wood.) Describe witness monuments.

- (d) Show a plan view drawing depicting the relevant monuments and reference ties which is sufficient in detail to enable accurate relocation of the corner monument if the corner monument is disturbed. Indicate north.



J-15

Describe any material discrepancy between the location of the corner as restored or reestablished and the location of that corner as previously restored or reestablished by distance and direction. Show the discrepancy on the plan view drawing under (d), above. Show the distances between the corner as previously restored or reestablished and (1) the corner as restored or reestablished, and (2) to at least 2 of the witness monuments shown on the drawing in (d), above.

NA

(f) Was the corner restored through acceptance of (1) an obliterated evidence location, or, (2) a found perpetuated location?

Found perpetuated monument accepted.

(g&h) Was the corner reestablished through lost corner proportionate methods? If so, show the method, including the directions and distances to other public land survey corners used as evidence or used for proportioning in determining the corner location?

NA

REGISTER'S OFFICE }  
Oneida County, Wis. }

Received for Record the 28 day of

July A. D. 1983 at

2:10 o'clock P. M. and recorded in

Vol. \_\_\_\_\_ on page \_\_\_\_\_

Doris Verage Kuehn  
Register

By Cynthia A. Pitts, Deputy



(i) I, Robert H. Winat, S-1040  
(type or print name) certify that the corner location shown on this record was determined by me or under my direction and control and that this U.S. Public Land Survey Monument Record is correct and complete to the best of my knowledge and belief.

Robert H. Winat 29 April 1983  
Signature Date

# U. S. PUBLIC LAND SURVEY MONUMENT RECORD

**INSTRUCTIONS:** This record shall show the location of the corner and shall include all of the following nine elements (a through i).

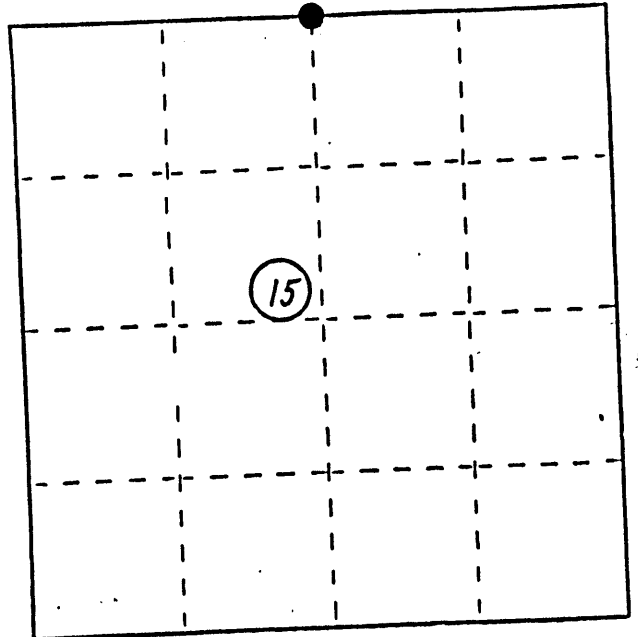
- (a) Identify the corner by reference to the U.S. public land survey system.

● = Corner monument restored.

The Quarter corner between Sections 10 & 15, Township 36 North, Range 9 East, Oneida County, Wisconsin.

Compared with all record data and accepted as correct.

*Robert H. Winat*  
 Robert H. Winat, Oneida Co. Surveyor  
 4 May 1983



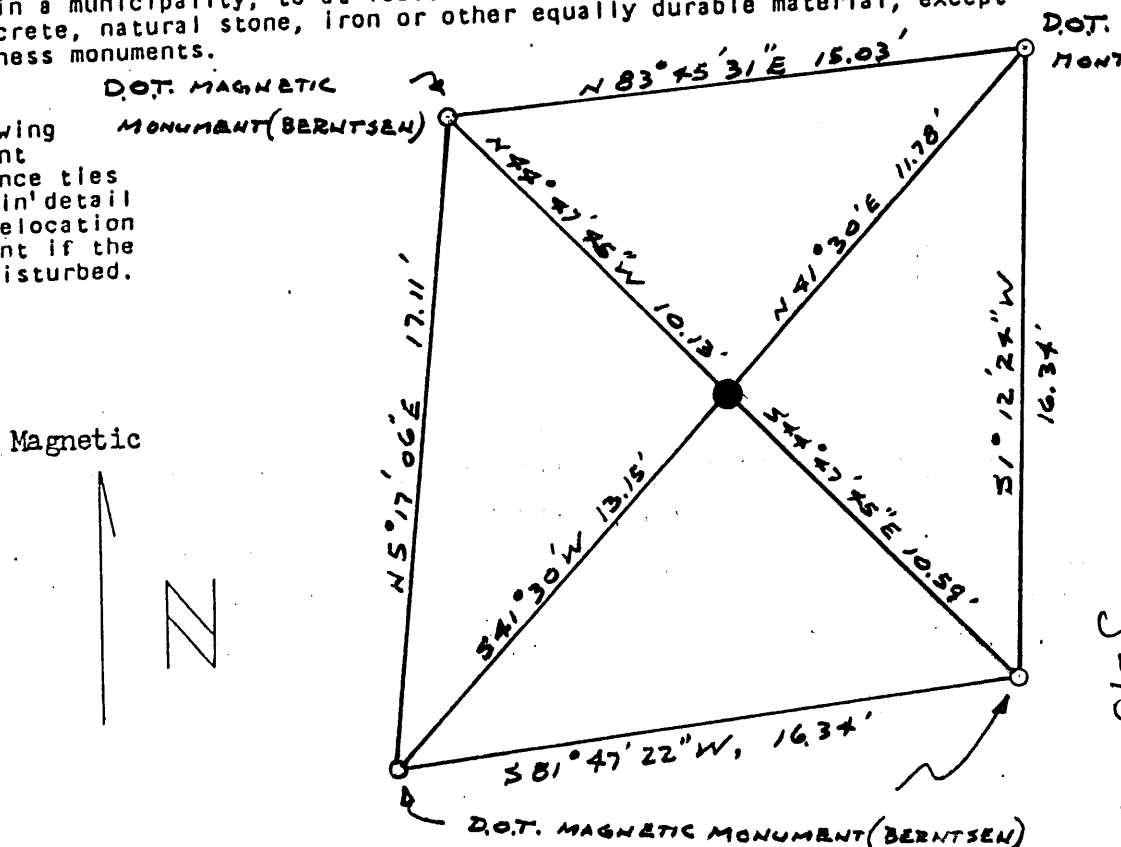
- (b) Describe any record evidence, monument evidence, occupational evidence, testimonial evidence or any other material evidence you considered, and whether the monument was found or placed.

D.H. Vaughan's survey of 1902 and 1908 proportioned this corner. Perpetuated by J. Donohue Engr. survey of June 1923 - found a 4" dia. cast iron cap, marked J. Donohue Engr. Co. with a cross in the center, in a 6" dia. concrete monument. An old barbed wire fence runs east.

C.S.M.# 184

- (c) In the plan view drawing below, provide reference ties to at least 4 witness monuments, or, if the location is within a municipality, to at least 2 witness monuments. (Witness monuments shall be made of concrete, natural stone, iron or other equally durable material, except wood.) Describe witness monuments.

- (d) Show a plan view drawing depicting the relevant monuments and reference ties which is sufficient in detail to enable accurate relocation of the corner monument if the corner monument is disturbed. Indicate north.



(e) Describe any material discrepancy between the location of the corner as restored or reestablished and the location of that corner as previously restored or reestablished by distance and direction. Show the discrepancy on the plan view drawing under (d), above. Show the distances between the corner as previously restored or reestablished and (1) the corner as restored or reestablished, and (2) to at least 2 of the witness monuments shown on the drawing in (d), above.

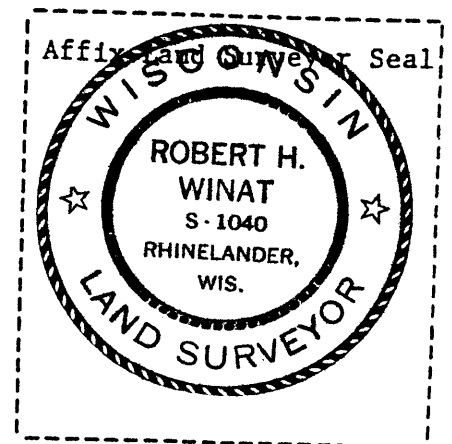
NA

(f) Was the corner restored through acceptance of (1) an obliterated evidence location, or, (2) a found perpetuated location?

Found perpetuated monument accepted.

(g&h) Was the corner reestablished through lost corner proportionate methods? If so, show the method, including the directions and distances to other public land survey corners used as evidence or used for proportioning in determining the corner location?

NA



(i) I, Robert H. Winat, S-1040  
(type or print name) certify that the corner location shown on this record was determined by me or under my direction and control and that this U.S. Public Land Survey Monument Record is correct and complete to the best of my knowledge and belief, correcting the transposed digits for the witness to the SE, as shown in my previous corner record.

Robert H. Winat 18 Aug. 1983  
Date

Signature

REGISTER'S OFFICE }  
Oneida County, Wis. }

Received for Record the 18th day of August A.D. 1983 at 4:00 o'clock P M. and recorded in Vol. \_\_\_\_\_ on page \_\_\_\_\_  
Donis Berge Kuehn  
Register

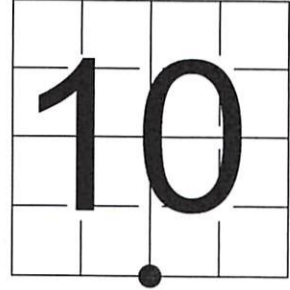
Stock No. 26273

**U S PUBLIC LAND SURVEY MONUMENT RECORD**

NOTE: This form is intended and designed to fulfill all requirements of Wisconsin Administrative Code, Chapter A-E 7.08 U.S. Public Land Survey Monument Record (3) (a-i)

(a) CORNER LOCATION  
 SOUTH 1/4 CORNER OF SECTION 10  
 TOWNSHIP 36 NORTH  
 RANGE 09 EAST OF THE 4TH PM  
 TOWN OF PELICAN  
 COUNTY OF ONEIDA

WISCRS - ONEIDA COUNTY  
 N: 156313.395 USft  
 E: 278910.856 USft  
 Datum: NAD83 (2011)  
 GNSS Method RTN - Direct  
 GNSS Control WISCORS VRS



(b) HISTORY OF ORIGINAL CORNER ESTABLISHMENT

Original Surveyor: William E. Daugherty  
 Date of Survey Commenced: July 30, 1863 Completed: August 11, 1863  
 Original Accessories: White Pine 8 S48W 20 & White Pine 10 N35E 23

(f)(g)(h) Description of monument found at this corner and if it was accepted, state all evidence (material, testimonial, occupational, plats, records, other monuments) used as a basis for accepting. If not accepted or if nothing was found, state evidence used as basis for establishing location. If re-established through lost corner proportionate methods, indicate all monuments, distances and directions used to establish. Indicate type of monument and sign post found or set.

See previous U.S. Public Land Survey Monument Record - INDEX NO. J - 15 - 3609100020

February 17, 1902 - County Surveyor D.H. Vaughn - Old Field book 3 Page 132 "set post equal distance bet. sect corners...there is a rock 4X4 and 2 feet in which is a crack, which is N 20 1/2 W 24 1/2

June 3, 1940 - Maine Field book 1940A Page 83 & 89 call for D.H.V.'s stake and Rock witness at corner location.

February 11, 1974 - Surveyor - Herbert Moore cites corner and 4' dia. rock, NW 16.0' on Certified Survey Map recorded in: VOLUME 1 OF S.MAPS, ON PAGE 104-105.

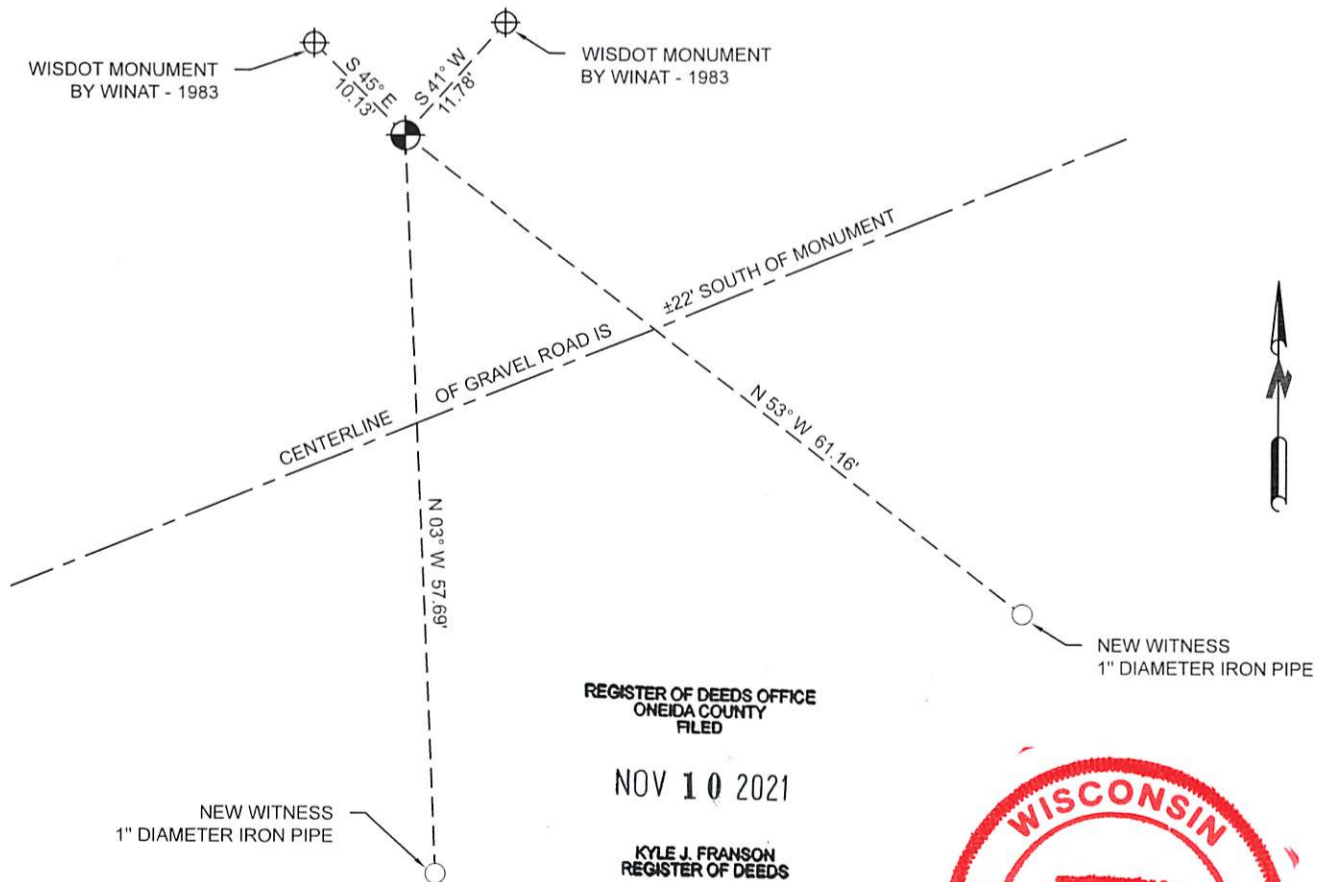
April 29, 1983 - Surveyor 1040 - Robert H. Winat "Found perpetuated monument accepted", and witnessed as shown on U.S. Public Land Survey Monument Record J-15.

August 14, 2016 - Surveyor 2148 - Russell F. Brown found a Brass Cap in Concrete as shown on Genisot DWG. NO. 11,357

May 11, 2021 - I found and accepted a 4 1/2" diameter cast iron cap, with a cross in the center, marked: J, DONOHUE ENGR. CO., cap set in 6" diameter concrete monument, and made or verified witnesses as shown below.

The coordinate value shown has been verified by the average of two or more GPS observations at a markedly different time:-

(c)(d)(e) Plan view of corner with ties to at least 4 witness monuments.



REGISTER OF DEEDS OFFICE  
 ONEIDA COUNTY  
 FILED

NOV 10 2021

KYLE J. FRANSON  
 REGISTER OF DEEDS



(i) I, Jeffrey L. DeMuth, Professional Land Surveyor No. S-2656, hereby certify that the corner location on this record was determined by me or under my direction and control and that this U.S. Public Land Survey Monument Record is correct and complete to the best of my knowledge, and belief

*Jeffrey L. DeMuth*  
 SIGNATURE

OCTOBER 8, 2021  
 DATE

J-15  
 43609100020