

# U.S. PUBLIC LAND SURVEY MONUMENT RECORD

(As Required By s. A-E 7.08, WI Adm. Code)

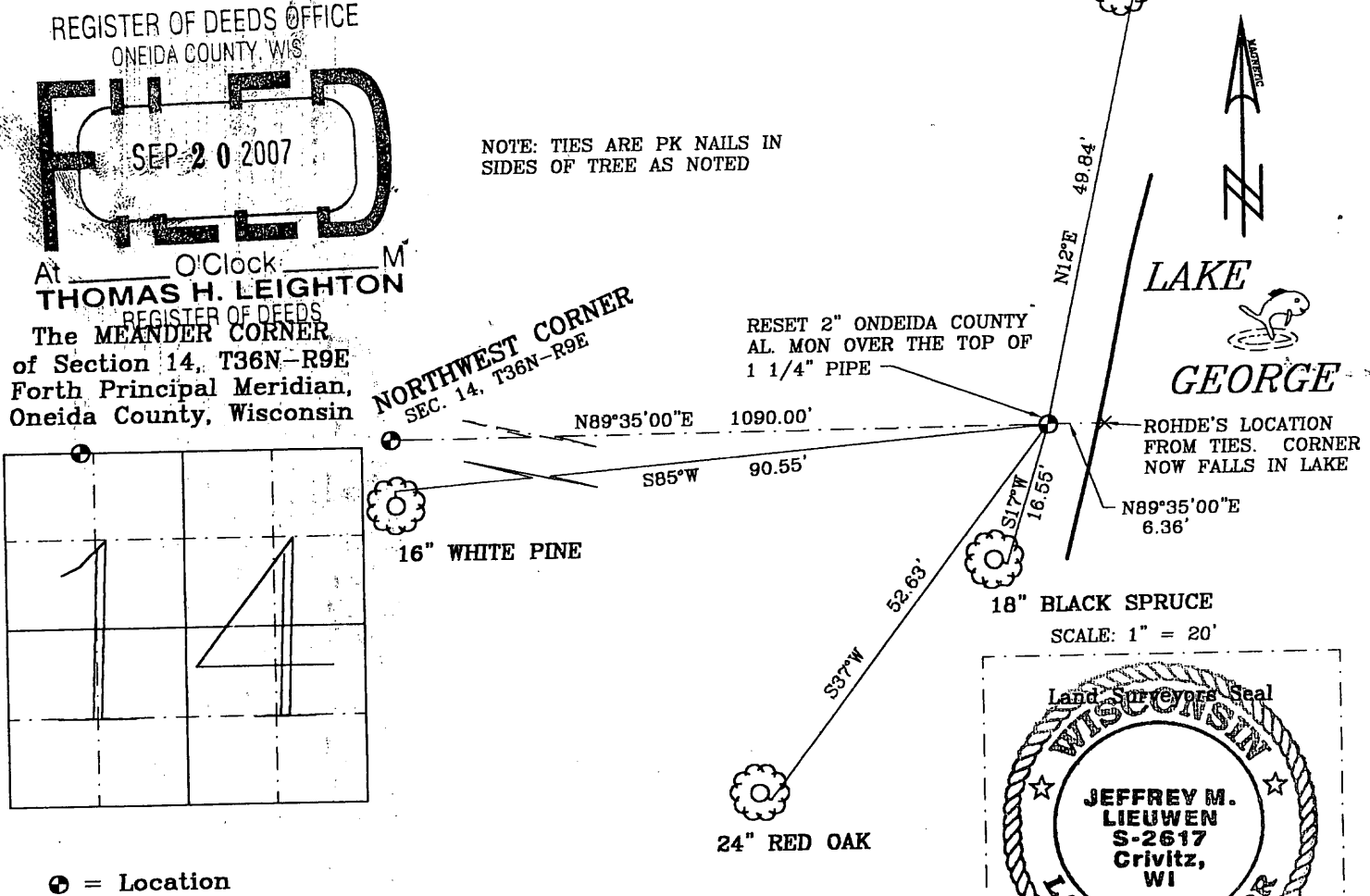
History of original corner establishment and subsequent restorations and description of any record, monument, occupational, testimonial or other evidence considered:

- 1865 WILLIAM E. DAUGHERTY, A DEPUTY SURVEYOR, ESTABLISHED AS WOOD POST FROM CORNER AND MARKED B.T.'s
- 1924 (APRIL) D.S. BURNETT SET A WOOD POST FOR MEANDER CORNER ON SECTION LINE EXTENSION FROM EAST MC ACROSS GEORGE LAKE AND NOTED SAME OLD B.T.'s FROM 1865 NOTES. IN JUNE 1924, BURNETTE NOTES THIS CORNER PER PLAT OF ALBURMI SHORES IN ONEIDA COUNTY RECORDS
- 1932 C.W. FISHER NOTES THIS CORNER PER REPLAT OF BLOCK 2, ALBURMI SHORES PLAT
- 1959 R.M. ROWINSKI NOTES THIS CORNER AND B.T. PER PLATS OF SURVEY A944 & B-1828, ONEIDA COUNTY SURVEY RECORDS
- 1992 JAMES L. WILL NOTES A 1 1/2" PIPE AT THIS CORNER PER PLAT OF SURVEY B-2709 ONEIDA COUNTY SURVEY RECORDS
- 2002 WILLIAM C. ROHDE FOUND & ACCEPTED AN OLDER 1 1/4" PIPE AT EXISTING SHORELINE. HE RESET PIPE DEEPER & PLUMB & DROVE A STANDARD 2" BY 30" ALUMINUM MONUMENT w/ SPILT BOTTOM END AND STAMPED ONEIDA COUNTY CAP OVER THE PIPE FLUSH w/ TOP OF BANK. HE SET NEW TIES FOR CORNER.
- 2007 JEFFREY M. LIEUWEN FOUND 1 1/4" PIPE INSIDE OF STANDARD 2" ALUMINUM MONUMENT IN LAKE BED LEANING BADLY. I RESET CORNER POSITION FROM ROHDE'S TIES, POSITION NOW FALLS IN LAKE (SHORELINE BADLY ERODED). I RESET MEANDER CORNER ON A LINE FROM ROHDE'S POSITION TO NORTHWEST SECTION CORNER AND USED ROHDE'S TIES FOR NEW POSITION

Corner was: (Check All That Apply)

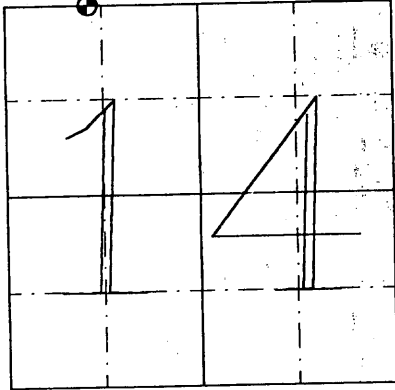
- Restored through acceptance of an obliterated evidence location
- Restored through acceptance of a found perpetuated location
- Considered a lost corner and reestablished through lost corner proportionate methods(include a plan view drawing showing distances and directions to other Public Land Survey Corner used for proportioning and determining the corner location)
- Restored or reestablished in a location that differs from a previous restoration of reestablishedment(include a plan view drawing and indicate what was set and/or found)

Describe the monument and accessories used to perpetuate the location of this corner.  
(include a plan view drawing and indicate what was set and/or found)



REGISTER OF DEEDS OFFICE  
ONEIDA COUNTY, WIS  
**FILED**  
SEP 20 2007  
At \_\_\_\_\_ O'Clock \_\_\_\_\_ M  
**THOMAS H. LEIGHTON**  
REGISTER OF DEEDS  
The MEANDER CORNER  
of Section 14, T36N-R9E  
Forth Principal Meridian,  
Oneida County, Wisconsin

NOTE: TIES ARE PK NAILS IN SIDES OF TREE AS NOTED



I, JEFFREY M. LIEUWEN RLS 2617  
(type or print name) certify that the corner location shown on this record was determined by me or under my direction and control and that this U.S. Public Land Survey Monument Record is correct and complete to the best of my knowledge and belief.  
*Jeffrey M. Lieuwen*  
Signature Date July 2, 2007

Index No. J 17-18

WITNESS MC 3609110031  
3609110032