

JUN 08 2017

AT O'CLOCK M
KYLE J. FRANSON
REGISTER OF DEEDS

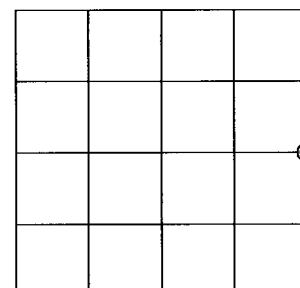
U.S. PUBLIC LAND SURVEY MONUMENT RECORD

Note: This form is intended and designed to fulfill all requirements of the Wisconsin Administrative Code, Chapter A-E 7.08 U.S. Public Land Monument Record (3)(a)(b)(c)(d)(e)(f)(g)(h)(i). An additional sheet may be added if necessary to conform with said requirements.

(a) CORNER LOCATION: WISCRS - Oneida County
 East Quarter Corner of Section 11
 Township 36 North
 Range 9 East
 Town of Pelican
 County of Oneida
 North: 158942.092 USft
 East: 287222.956 USft
 Latitude: 45° 37' 18.31321" N
 Longitude: 89° 19' 14.94947" W
 Datum: NAD 83(2011)
 GNSS Method: RTK - Direct
 GNSS Control: WISCORS VRS
 Record North: 158942.163 USft
 Record East: 287222.920 USft
 Record Datum: NAD 83(1991)

(RECORDING AREA)

SECTION 11



(b) HISTORY OF ORIGINAL CORNER ESTABLISHMENT

Original Surveyor: William E. Daugherty
 Date of Survey: Commenced July 30th, 1863
 Completed August 11th, 1863
 Original B.T.'S: Birch 9" N 56°E, 23 lks.
 Birch 12" S 14°W 27 lks.

(f)(g)(h) DESCRIPTION OF MONUMENT FOUND AT THIS CORNER AND IF IT WAS ACCEPTED, STATE ALL EVIDENCE (MATERIAL, TESTIMONIAL, OCCUPATIONAL, PLATS, RECORD, OTHER MONUMENTS) USED AS A BASIS FOR ESTABLISHING LOCATION. IF NOT ACCEPTED OR IF NOTHING WAS FOUND, STATE EVIDENCE USED AS BASIS FOR ESTABLISHING LOCATION. IF REESTABLISHED THROUGH LOST CORNER PROPORTIONATE METHODS, INDICATE ALL MONUMENTS, DISTANCES AND DIRECTIONS USED TO ESTABLISH. INDICATE TYPE OF MONUMENT AND SIGN POST FOUND OR SET.

January 9, 1899 - D.H. Vaughan, County Surveyor (Old Field Book 1, pages 26-27 and also Dorr-Vaughan Book, page 191, for a survey in Section 11, T36N, R9E) determined the corner was lost when reestablishing the corner common to Sections 1-2-11-12

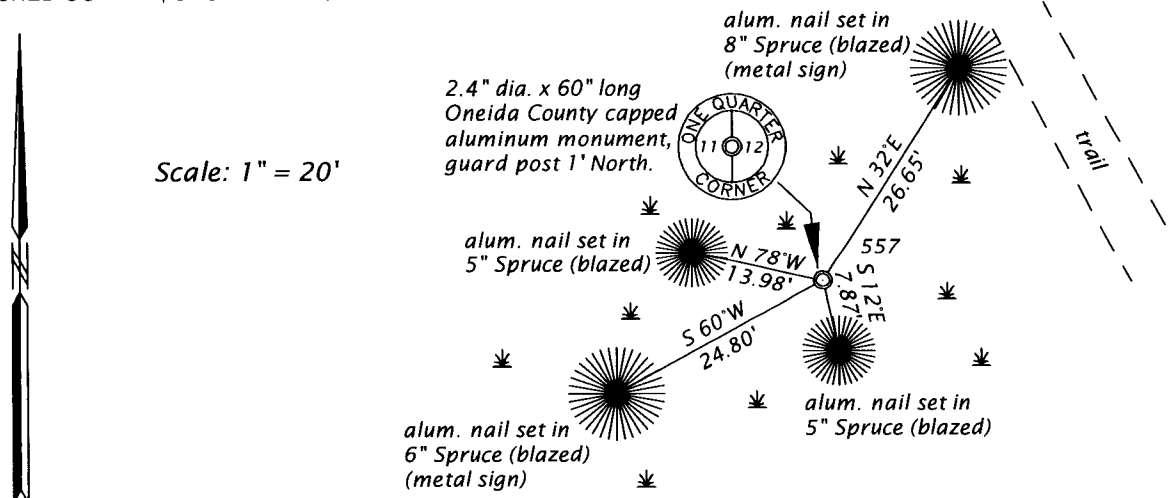
April 29 thru June 6, 1924 - D.S. Burnett, C.E. (Old Field Book 29, pages 29 through 37, for survey in Section 11, T36N, R9E), could find no trace of Orig. 1/4, thus after further retracement effort decided to accept Vaughan's reestablished corner common to Sections 1-2-11-12. He monuments the S 1/16 corner on the section line, but not the 1/4 corner. (note - his corrected random distance shown on page 35 is 69.55 chains, or 4590.3 feet, however the distance for his 1/4 distance is shown as 17.63 chains or 1163.58 feet in diagram on page 30)

1981 - Gerald Boyd Inman, RLS No. 891, Inman Foltz and Associates, Inc. map of survey in the N 1/2, Section 11, T36N, R9E, filed as B1111 in the county surveyor's office, legends the corner monumented by an "Axel shaft found", referenced by the following bt's: 3" Spruce S72°W, 21.2'; 4" Spruce N30°W, 9.0'; 12" Spruce N4°E, 31.6'; and 3" Spruce N58°E, 11.1'

(CONTINUED ON REVERSE PAGE)

The coordinate value shown has been verified by at least one of the following methods: 1) comparison to a previously GPS determined published value; 2) the value is the average of two or more GPS observations at a markedly different time; 3) one or more distances were measured back to the GPS observed corner from temporary GPS observed offset locations.

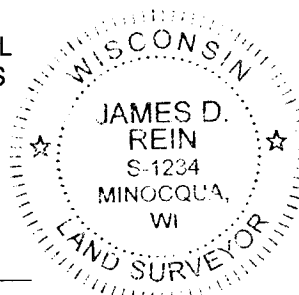
(c)(d)(e) PLAN VIEW OF CORNER WITH TIES TO AT LEAST 4 WITNESS MONUMENTS. IF IN DISAGREEMENT WITH PREVIOUSLY ESTABLISHED CORNER, SHOW THE DISTANCE BETWEEN THE TWO CORNERS AND ALSO INDICATE THE TIES TO THE DISPUTED CORNER.



(i) I, JAMES D. REIN, PROFESSIONAL LAND SURVEYOR NO. S-1234 HEREBY CERTIFY THAT THE CORNER LOCATION ON THIS RECORD WAS DETERMINED BY ME OR UNDER MY DIRECTION AND CONTROL AND THAT THIS U.S. PUBLIC LAND SURVEY MONUMENT RECORD IS CORRECT AND COMPLETE TO THE BEST OF MY KNOWLEDGE AND BELIEF.

James D. Rein
 SIGNATURE

6-06-17
 DATE



INDEX NO. G-21
 3609112000

(CONTINUED ON REVERSE PAGE)

May 4, 2017 - James D. Rein, PLS No. 1234, we recovered a $\pm 1 \frac{1}{2}$ " dia. axle shaft, extending 18" above surface in wetland area. Based upon my analysis of the published corresponding section corners I conclude the axle shaft is approximately 21 feet south and 3.5 feet east of single proportionate measurement position. This monument has been accepted by subsequent surveyors for surveys filed in the county surveyor's office as B300, C2313 and C2385. I, thus accept the monument as a good faith reestablishment of the corner by single proportionate measurement. We placed an Oneida County capped 2.4" dia. x 60" long monument over the axle shaft, extending 21" above ground and made reference ties as shown in the plan.