

# U.S. PUBLIC LAND SURVEY MONUMENT RECORD

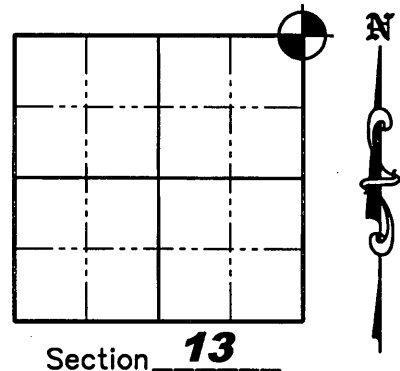
NOTE: This form is intended and designed to fulfill all requirements of Wisconsin Administrative Code, Chapter A-E 7 .08 U.S. Public Land Survey Monument Record (3)(a)(b)(c)(d)(e)(f)(g)(h)(i). An additional sheet may be added if necessary to conform with said requirements.

(a) Corner location: Township 36 North

Range 9 East

Town of Pelican

County of Oneida



Section 13

(b)(f)(g)(h) Description of monument found at this corner and if it was accepted, state all evidence (material, testimonial, occupation, plats, records, other monuments) used as a basis for accepting. If not accepted or if nothing was found, state evidence used as a basis for establishing location. If reestablished through lost corner proportionate methods, indicate all monuments, distances and directions used to establish. Indicate type of monument found or set and sign post.

**1859** – Original survey by H.C. Fellows, set corner post with bearing trees: 6" Tamarack S30°W, 10 lks; 10" Tamarack N43°W, 12 lks; 12" Tamarack, N70°E, 7 lks; 7" Pine, S39°E, 10 lks.

**6/1/1949** – I. Branham located corner in slough approximately 300' North of Railroad Track and paced East from corner. He Shows corner 40.24 chains (2655.84') North of the East 1/4 Corner of Section 13, T.36N., R.9E. on a sketch per Branham Book 1, Page 5 & 6.

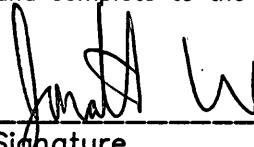
**12/9/1965** – Survey by NEPCO from NEPCO Book 1, page 106 shows an Iron Pipe or Brass Cap at the corner location. (S0°38'E, 2685.2' from the East corner of Section 12, T.36N., R.9E.)

**12/17/2003** – Matthew E. Hogle did an extensive search for this corner for his survey in Section 18, T.36N., R.10.E (O.C.L.I.O. Map Number C-2061) and didn't find any evidence of it. The corner also falls in a very wet swamp. Per the clients request he stopped work in the Northwest corner of Section 18 and finished off his work in the rest of the Section.

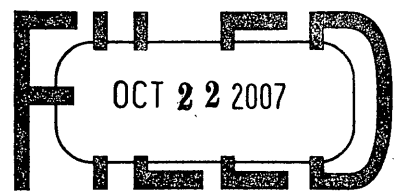
**5/30/2007** – Jonathan W. Dulin found no evidence of the corner. The corner was established by obliterated means using Branham's 1949 measurement of 2655.84' from the East 1/4 corner of Section 13 and the NEPCO 1965 measurement of 2685.2' from the East 1/4 corner of Section 12. Our measured distance between these corners was 5345.92' and the record was 5341.04', a difference of only 4.88'. We prorated that distance out and came up with a position, but this position fell in a very wet and deep swamp and was not set. We set reference monuments as shown on sheet 2 hereof.

*See Sheet 2 hereof for Detail*

(i) I, Jonathan W. Dulin, certify that the corner location on this record was determined by me under my direction and control and that this U.S. Public Land Survey Monument is correct and complete to the best of my knowledge and belief.

  
 Signature \_\_\_\_\_ Date 9-19-07  
 JONATHAN W. DULIN  
 S-2754  
 RHINELANDER  
 WISCONSIN  
 LAND SURVEYOR OF 2

REGISTER OF DEEDS OFFICE  
ONEIDA COUNTY, WIS.



At \_\_\_\_\_ O'Clock \_\_\_\_\_ M  
 THOMAS H. LEIGHTON  
 REGISTER OF DEEDS

3609120000-~~XXXXXXXXXX~~

Index Number 125

# U.S. PUBLIC LAND SURVEY MONUMENT RECORD

(c)(d)(e) Plan view of corner with ties to at least 4 witness monuments. If in disagreement with previously established corner, show the distances between the two corners and also indicate the ties to the disputed corner.



All bearings are referenced to the South line of the NE 1/4 of Section 13, T.36N., R.9E, recorded as N82°12'25"W on the Oneida County Coordinate System.

E 1/4 Cor.  
Section 12  
T.36N., R.9E.  
5/8" Capped Iron  
Rebar Found

GRAPHIC SCALE



( IN FEET )

N 1/4 Cor.  
Section 13  
T.36N., R.9E.

N83°59'58"W

2612.34'

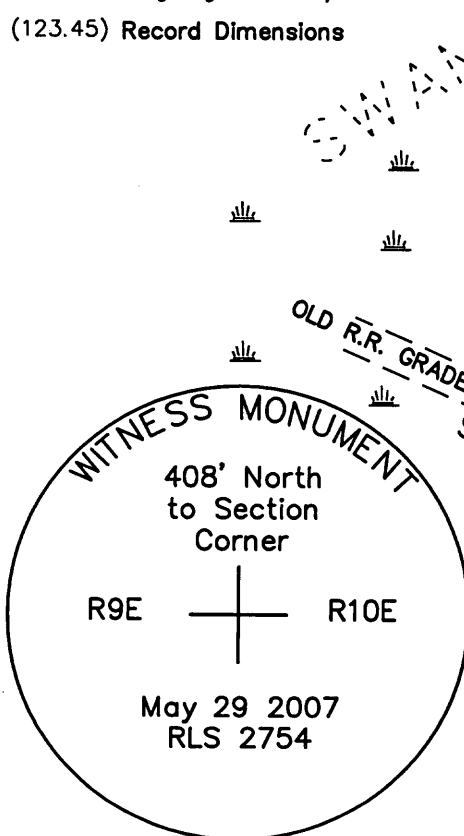
NE Cor.  
Section 13  
T.36N., R.9E.

## Legend

- Found 2-1/2" Capped Oneida County Aluminum Monument Unless otherwise noted
- Set 2-1/2" Capped Oneida County Aluminum Monument
- Set 3/4" by 24" iron rebar Weighing 1.50 lbs/lin ft.
- (123.45) Record Dimensions

## Note:

The Old Railroad Grade is about 18' wide and is overgrown with trees and brush



SHEET 2 OF 2

E 1/4 Cor.  
Section 13  
T.36N., R.9E.

Index Number J25

3609120000