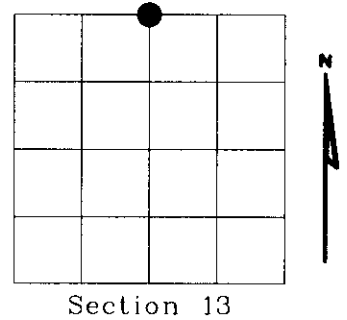


U.S. PUBLIC LAND SURVEY MONUMENT RECORD

NOTE: This form is intended and designed to fulfill all requirements of Wisconsin Administrative Code, Chapter A-E 7.08 U.S. Public Land Survey Monument Record (3)(a)(b)(c)(d)(e)(f)(g)(h)(i) An additional sheet may be added if necessary to conform with said requirements.

(a) Corner location: Township 36 North
 Range 09 East
 Town of PELICAN
 ONEIDA County, Wisconsin

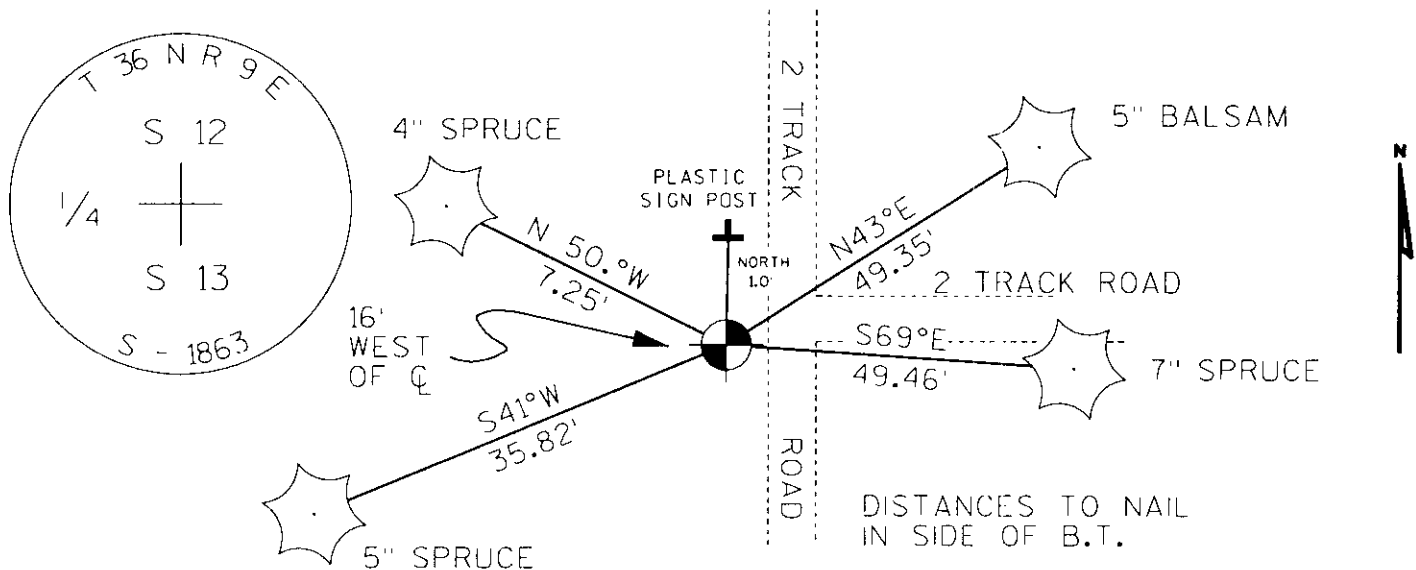


Section 13

(b)(f)(g)(h) Description of monument found at this corner and if it was accepted, state all evidence (material, testimonial, occupational, plats, records, other monuments) used as a basis for accepting. If not accepted or if nothing was found, state evidence used as basis for establishing location. If reestablished through lost corner proportionate methods, indicate all monuments, distances and directions used to establish. Indicate type of monument found or set and sign post.

- 1863 - WM. E. DAUGHERTY ESTABLISHED CORNER, SET POST AND B.T.'S
 B.T.'S
 TAMARACK 12" N 76° E, 22 LKS.
 BIRCH 7" S 39° W 9 LKS.
- 1968 - WM. H. STUH, OF NEPCO, SMALL MAP SHOWS IRON PIPE OR BRASS CAP
- 1999 - DENNIS B. ROBERTS, FOUND 1 1/2" WELL POINT LYING ON THE GROUND
 TALKED WITH LAND OWNER MR. MIKE UMLAND, HE STATED WELL
 POINT WAS PULLED OUT DURING LOGGING. HE SHOWED ME THE
 1/16 CORNER TO THE WEST. I DOUBLED THE DISTANCE FROM THE
 NW CORNER OF SECTION 13 AND THE 1/16 CORNER AND SHOWED
 THE COMPUTED POSITION OF N 1/4 TO MR. UMLAND HE SAID THE
 POSITION LOOKED GOOD.
 SEE BACK OF SHEET FOR ESTABLISHMENT OF N 1/4 CORNER
 I SET ONEIDA COUNTY MONUMENT 2" DIAMETER ALUMIUM PIPE
 WITH 3" DIAMETER ALUMINUM TABLET STAMPED TO IDENTIFY CORNER

(c)(d)(e) Plan view of corner with ties to at least 4 witness monuments If in disagreement with previously established corner, show the distances between the two corners and also indicate the ties to the disputed corner.



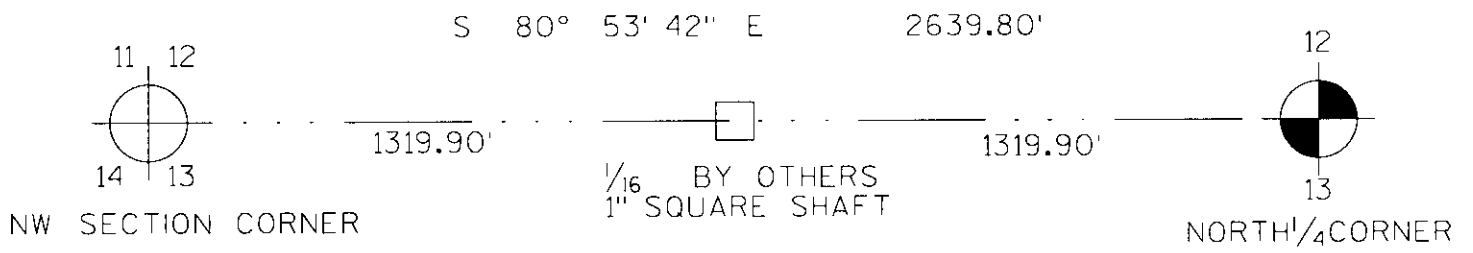
(i) I, Dennis Roberts, Registered Land Surveyor *S-1863, hereby certify that the corner location on this record was determined by me or under my direction and control and that this U.S. Public Land Survey Monument Record is correct and complete to the best of my knowledge and belief.

Dennis B. Roberts
 Signature
 01-10-2000
 Date



Index No. J-23

3609120020



REGISTER OF DEEDS OFFICE
 ONEIDA COUNTY, WIS.

FILED
 JAN 25 2006

At _____ O'Clock _____ M
 THOMAS H. LEIGHTON
 REGISTER OF DEEDS

U.S. PUBLIC LAND SURVEY MONUMENT RECORD

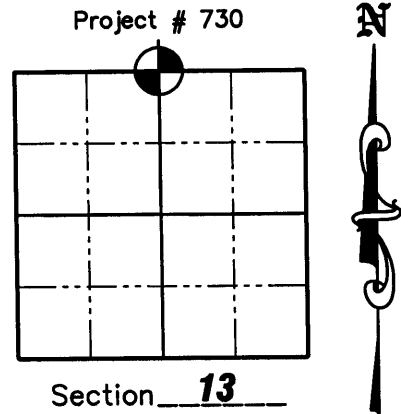
NOTE: This form is intended and designed to fulfill all requirements of Wisconsin Administrative Code, Chapter A-E 7 .08 U.S. Public Land Survey Monument Record (3)(a)(b)(c)(d)(e)(f)(g)(h)(i). An additional sheet may be added if necessary to conform with said requirements.

(a) Corner location: Township 36 North
Range 9 East

Town of Pelican

County Oneida

Oneida County Northing 156294.346
Coordinates Easting 289705.997



(b)(f)(g)(h) Description of monument found at this corner and if it was accepted, state all evidence (material, testimonial, occupation, plats, records, other monuments) used as a basis for accepting. If not accepted or if nothing was found, state evidence used as a basis for establishing location. If reestablished through lost corner proportionate methods, indicate all monuments, distances and directions used to establish. Indicate type of monument found or set and sign post.

1863- Corner established by W. E. Daugherty. Set post and BT's Tamarack 12", N76E, 22 lks. Birch 7", S39W, 9lks.


1968- WM. Stuth, of NEPCO, small map shows iron pipe or brass cap.


1999- Dennis B. Roberts, S-1863, found a 1-1/2" well point lying on the ground. He talked with land owner Mike Umland and he stated the well point was pulled out during logging. Mike Umland showed Dennis Roberts the 1/16th corner to the West and he doubled the distance from the NW Corner of Section 13 and the 1/16th corner and showed the computed position of the N 1/4 to Mr. Umland. He said the position looked good. So he set a 2" diameter Aluminum pipe with a 3" diameter tablet stamped to identify corner.

8/2/2006- Matthew E. Hوجلund, S-1910, surveyed Section 13 and found monument to be out of position. It looks like the corner had been staked out incorrectly. We surveyed the location of 1/16th corner to West and (by same method as Dennis Roberts in 1999) doubled over the distance from the NW section corner through the 1/16th corner to the West and reset the North 1/4 corner. See Sheet 2 hereof. We used the existing BT's to tie out the corner location as shown below.

(c)(d)(e) Plan view of corner with ties to at least 4 witness monuments. If in disagreement with previously established corner, show the distances between the two corners and also indicate the ties to the disputed corner.

LEGEND

 3/4" x 24" Iron Rebar Set Weighing 1.50 lbs/lin ft.

 2-1/2" Oneida County Aluminum Mon. Reset

Scale: 1" = 30'

5" Spruce-nail found in side of tree

5" Spruce-top half of tree is dead-nail found in side of tree

S84°19'05"W 10.16'

S37°21'01"W 43.21'

N54°14'36"E 42.18'

S66°50'46"E 46.83'


Set 3/4" Iron rebar S39°34'17"W 7.60'-This is where the Oneida County monument was found.

5" Balsam-nail found in side of tree



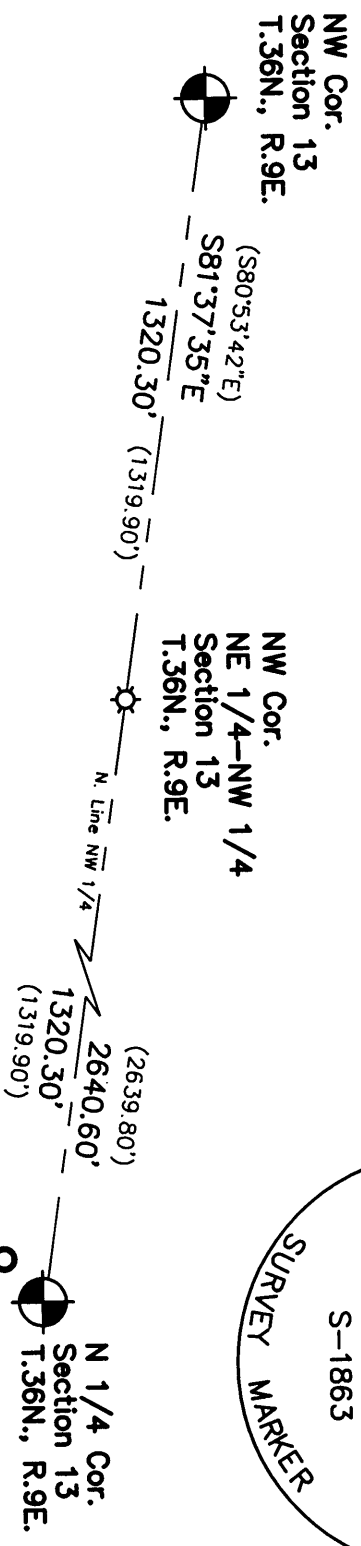
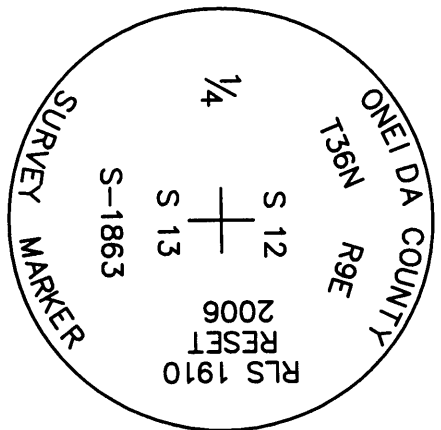
12" Spruce-nail found in side of tree

(i) I, Matthew E. Hوجلund, certify that the corner location on this record was determined by me under my direction and control and that this U.S. Public Land Survey Monument is correct and complete to the best of my knowledge and belief.


Signature _____ Date 9/28/06

WISCONSIN
MATTHEW E. HوجلUND
8-1910
TOMAHAWK
WI
LAND SURVEYOR

U.S. PUBLIC LAND SURVEY MONUMENT RECORD

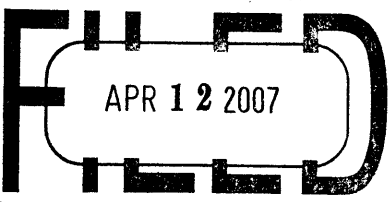


LEGEND

- 1" Square Iron Bar found 3' tall
- 2-1/2" Oneida County Aluminum Monument Reset
- 3/4" x 24" Iron Rebar Set Weighing 1.50 lbs/lin ft.

Set 3/4" Iron rebar S39°34'17"W 7.60'-This is where the Oneida County monument was found.

REGISTER OF DEEDS OFFICE
ONEIDA COUNTY, WIS.



At _____ O'Clock _____ M
THOMAS H. LEIGHTON
REGISTER OF DEEDS