

U.S. PUBLIC LAND SURVEY MONUMENT RECORD

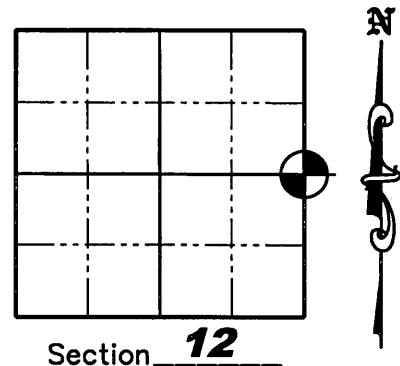
NOTE: This form is intended and designed to fulfill all requirements of Wisconsin Administrative Code, Chapter A-E 7 .08 U.S. Public Land Survey Monument Record (3)(a)(b)(c)(d)(e)(f)(g)(h)(i). An additional sheet may be added if necessary to conform with said requirements.

(a) Corner location: Township 36 North

Range 9 East

Town of Pelican

County of Oneida



Section 12

(b)(f)(g)(h) Description of monument found at this corner and if it was accepted, state all evidence (material, testimonial, occupation, plats, records, other monuments) used as a basis for accepting. If not accepted or if nothing was found, state evidence used as a basis for establishing location. If reestablished through lost corner proportionate methods, indicate all monuments, distances and directions used to establish. Indicate type of monument found or set and sign post.

1859 - Original survey by H.C. Fellows, set 1/4 post with bearing trees: 10" Pine N53°E, 30 lks; 14" Pine N60°W, 20 lks.

12/9/1965 - Survey by NEPCO from NEPCO Book 1, page 106 shows an Iron Pipe or Brass Cap at the corner location. (N0°38'W, 2685.2' from the Southeast corner of Section 12, T.36N., R.9E. and S0°38'E, 2685.2' from the Northeast corner of Section 12, T.36N., R.9E.

7/5/2002 - A-M Inc. found a 2" iron pipe and replaced it with a 5/8" capped rebar per Oneida County GPS coordinate sheet.

5/30/2007 - Jonathan W. Dulin found and accepted a 5/8" capped iron rebar. We also found a 4' tall 4" wood post laying on the ground next to the monument and an existing bearing tree with a metal sign on it: 10" Spruce, S71°E, 17.22'. A blue line was also painted North from the corner. We referenced the corner as shown below.

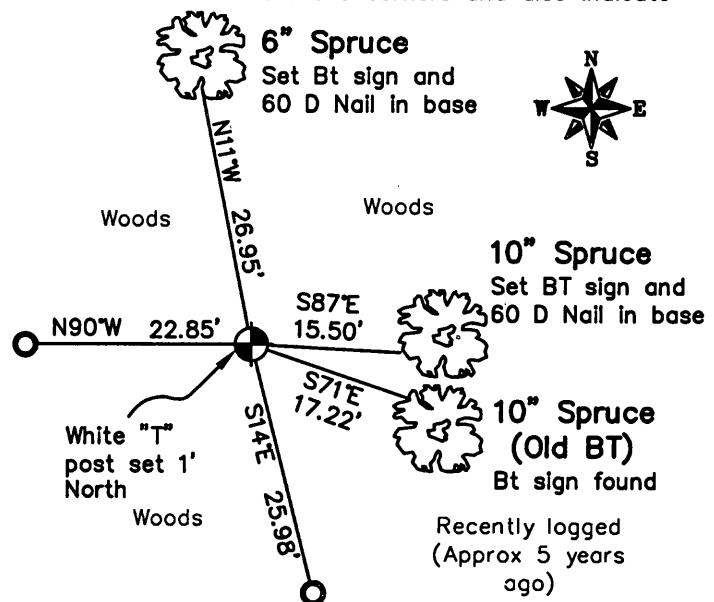
(c)(d)(e) Plan view of corner with ties to at least 4 witness monuments. If in disagreement with previously established corner, show the distances between the two corners and also indicate the ties to the disputed corner.

Legend

- Found 5/8" capped rebar
- Set 3/4" by 24" iron rebar
- Weighing 1.50 lbs/lin ft.

Notes:

1. Drawing is not to scale
2. All bearings taken with a hand held compass and distances taken with a tape measure.

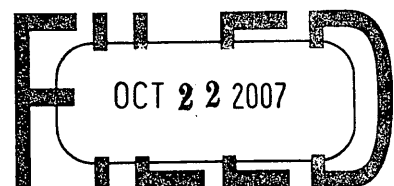


(i) I, Jonathan W. Dulin, certify that the corner location on this record was determined by me under my direction and control and that this U.S. Public Land Survey Monument is correct and complete to the best of my knowledge and belief.

Signature Jonathan W. Dulin Date 9-19-07

WISCONSIN
JONATHAN W. DULIN
S-2754
RHINELANDER
WISCONSIN
LAND SURVEYOR

REGISTER OF DEEDS OFFICE
ONEIDA COUNTY, WIS.



At _____ O'Clock _____ M
THOMAS H. LEIGHTON
REGISTER OF DEEDS
3609122000

Index Number 425

G-25