

# U.S. PUBLIC LAND SURVEY MONUMENT RECORD

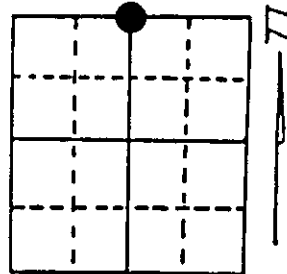
**Note:** This form is intended and designed to fulfill all requirements of Wisconsin Administrative Code, Chapter A-E 7.08 U.S. Public Land Survey Monument Record (3) (a) (b) (c) (d) (e) (f) (g) (h) (i). An additional sheet may be added if necessary to conform with said requirements.

(a) Corner location: Township 36 North

Range 9 East/West

Town/City/Village Pelican Lake

County Oneida



Section 24

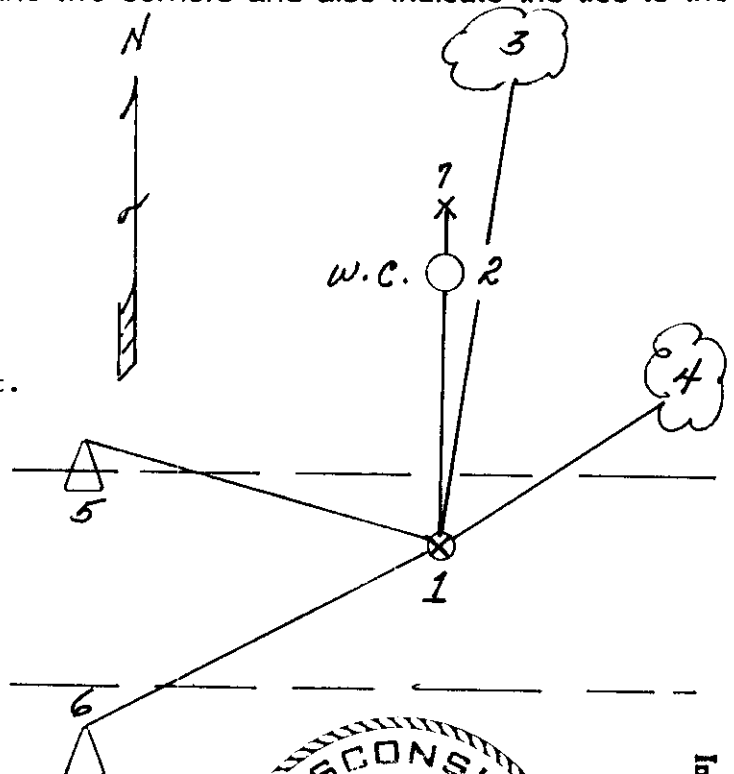
(b) (f) (g) (h) Description of monument found at this corner and if it was accepted, state all evidence (material, testimonial, occupational, plats, records, other monuments) used as a basis for accepting. If not accepted or if nothing was found, state evidence used as basis for establishing location. If reestablished through lost corner proportionate methods, indicate all monuments, distances and directions used to establish. Indicate type of monument found or set and sign post.

- 1863 - Wm. Daugherty established this corner at 40.31 Chains and made BT: 10" Aspen, N78°E, 267 Links.
- 1909 - Vaughan restored corner by Lost Methods and made one BT: 16" Red Pine, N21½°E, 277 Links (182.82')
- 1925 - D.O.T. notes called BT at this corner with post. No bearing or distance given. Highway construction destroyed post.
- 1/6/1992 - Milo E. Stefan found 24" - 26" Red Pine recently tipped out, blaze at stump chopped out.
- 2/10/1992 - We set single proportion position between Section Corners and large Red Pine bears N21°E, 184.2' as best we could judge. We set railroad spike for corner in blacktop, made four references, set 2" x 30" aluminum monument as a Witness Corner and set plastic sign post.  
(See back of sheet for proportioned distances.)

(c) (d) (e) Plan view of corner with ties to at least 4 witness monuments. If in disagreement with previously established corner, show the distances between the two corners and also indicate the ties to the disputed corner.

- 1) Railroad spike in blacktop
- 2) 2" x 30" aluminum county monument, North, 50.00 feet.
- 3) 10" Red Pine, N21°E, 211.42 feet.
- 4) 3" White Ash, N55°E, 74.70 feet.
- 5) East guard rail post to bridge North side of road - 81.46 feet.
- 6) East guard rail post to bridge South side of road - 84.97 feet.
- 7) Plastic Sign Post, North of W.C., 1.0 feet.

Distances to nail in side of BTs and top of guard rail posts.  
Stump blazes scribed "BT".



(i) I, Milo E. Stefan  
(type or print name) certify that the corner location on this record was determined by me or under my direction and control and that this U.S. Public Land Survey Monument Record is correct and complete to the best of my knowledge and belief.

Milo E. Stefan  
Signature

2/28/92  
Date

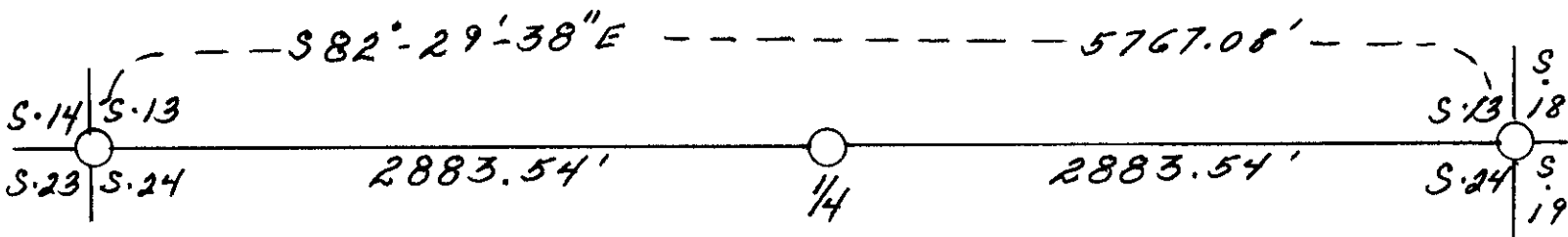


Index No. N-23

3609130020

Stamp

PROPORTIONATE POSITION



REGISTER OF DEEDS OFFICE  
ONEIDA COUNTY, WIS

**FILED**  
MAR 17 1992

At \_\_\_\_\_ O'Clock \_\_\_\_\_ M  
THOMAS H. LEIGHTON  
REGISTER OF DEEDS