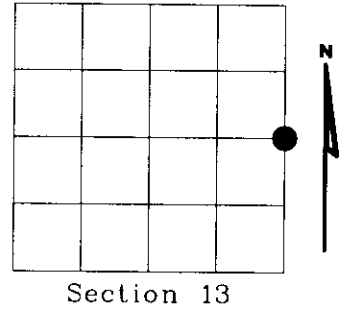


U.S. PUBLIC LAND SURVEY MONUMENT RECORD

NOTE This form is intended and designed to fulfill all requirements of Wisconsin Administrative Code, Chapter A-E 7.08 U.S. Public Land Survey Monument Record (3)(a)(b)(c)(d)(e)(f)(g)(h)(i). An additional sheet may be added if necessary to conform with said requirements.

(a) Corner location: Township 36 North
 Range 09 East
 Town of PELICAN
 ONEIDA County, Wisconsin



Section 13

(b)(f)(g)(h) Description of monument found at this corner and if it was accepted, state all evidence (material, testimonial, occupational, plats, records, other monuments) used as a basis for accepting. If not accepted or if nothing was found, state evidence used as basis for establishing location. If reestablished through lost corner proportionate methods, indicate all monuments, distances and directions used to establish. Indicate type of monument found or set and sign post.

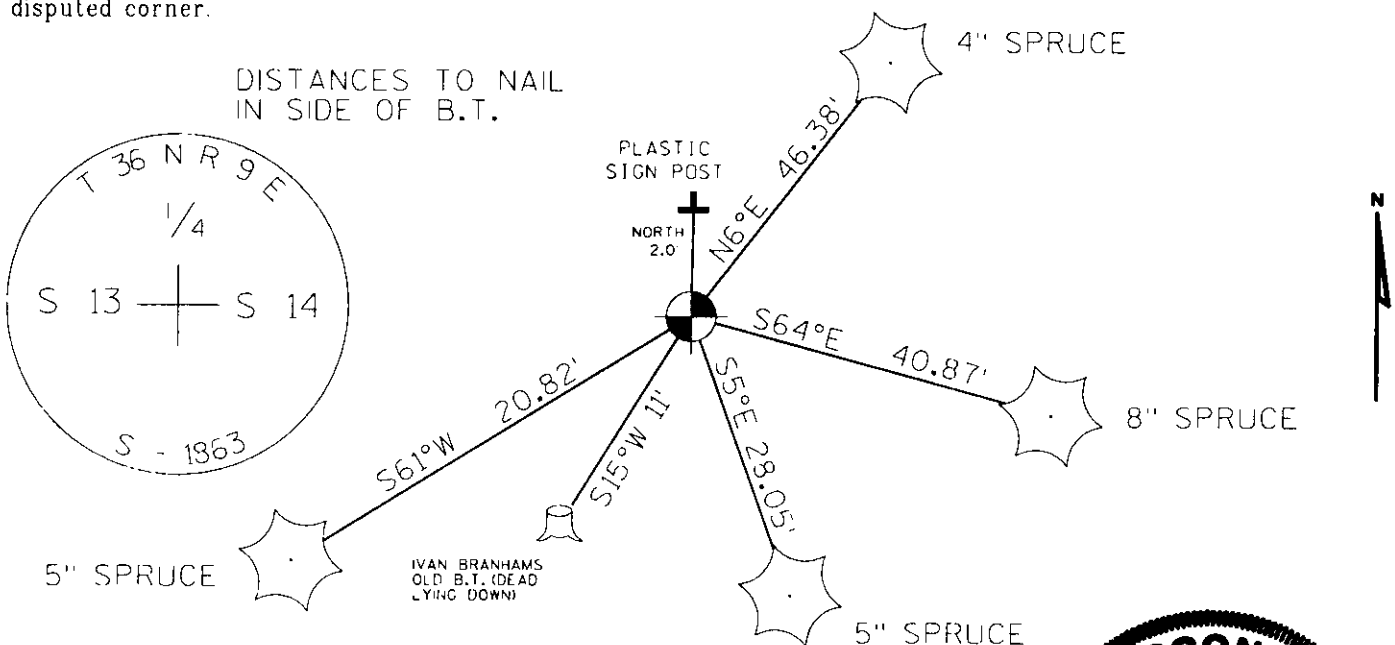
1862 - JAMES L. NOWLIN ESTABLISHED CORNER, SET POST AND B.T.'S
 B.T.'s
 TAMARACK 10" S 60° W. 12 LKS.
 TAMARK 7" N 68° E 7 LKS.

1949 - I. BRANHAM FOUND 1/4 POST

1963 - I. BRANHAM SET NEW B.T.
 SPRUCE 6" S 15° W 11 FEET

1999 - DENNIS B. ROBERTS, FOUND 1" IRON PIPE IN ROCK PILE
 I. BRANHAM'S B.T. SPRUCE 6" S 15° W 11 FEET
 DEAD AND LYING DOWN.
 REPLACED 1" IRON PIPE WITH ONEIDA COUNTY MONJMENT
 2" DIAMETER ALUMINUM PIPE WITH 3" ALUMINUM TABLET
 STAMPED TO IDENTIFY CORNER

(c)(d)(e) Plan view of corner with ties to at least 4 witness monuments. If in disagreement with previously established corner, show the distances between the two corners and also indicate the ties to the disputed corner.



(i) I, Dennis Roberts, Registered Land Surveyor *S-1863, hereby certify that the corner location on this record was determined by me or under my direction and control and that this U.S. Public Land Survey Monument Record is correct and complete to the best of my knowledge and belief.

Dennis B. Roberts 01-10-2000
 Signature Date



Index No. L 25

3609 13200