

U. S. PUBLIC LAND SURVEY MONUMENT RECORD

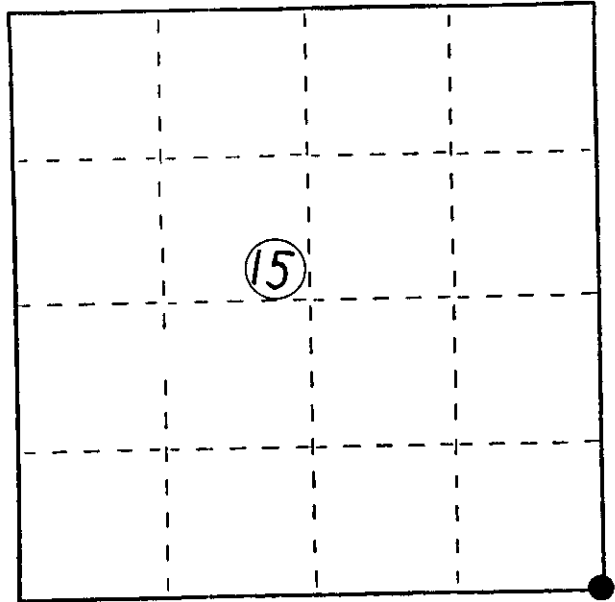
INSTRUCTIONS: This record shall show the location of the corner and shall include all of the following nine elements (a through i).

- (a) Identify the corner by reference to the U.S. public land survey system.
 ● = Corner monument restored.

The section corner common to sections 14, 15, 22 & 23, Town 36 North, Range 9 East, Oneida County, Wisconsin.

Compared with all record data and accepted as correct.

Robert H. Winat
 Robert H. Winat, Oneida Co. Surveyor
 4 May 1983

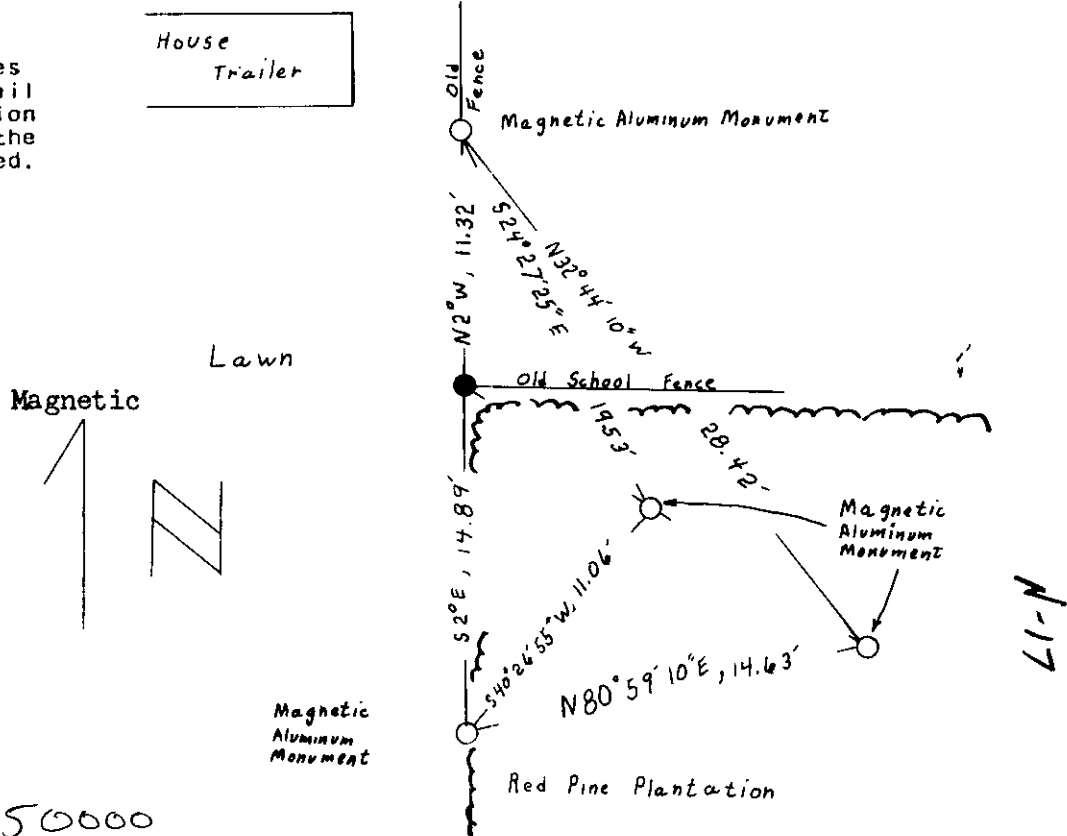


- (b) Describe any record evidence, monument evidence, occupational evidence, testimonial evidence or any other material evidence you considered, and whether the monument was found or placed.

Found 2" wall point at the south-west corner of the old school property.
 Old school fence bears north and east. See D. H. Vaughan's notes, 1909.

- (c) In the plan view drawing below, provide reference ties to at least 4 witness monuments, or, if the location is within a municipality, to at least 2 witness monuments. (Witness monuments shall be made of concrete, natural stone, iron or other equally durable material, except wood.) Describe witness monuments.

- (d) Show a plan view drawing depicting the relevant monuments and reference ties which is sufficient in detail to enable accurate relocation of the corner monument if the corner monument is disturbed. Indicate north.



3609150000

11-17

(e) Describe any material discrepancy between the location of the corner as restored or reestablished and the location of that corner as previously restored or reestablished by distance and direction. Show the discrepancy on the plan view drawing under (d), above. Show the distances between the corner as previously restored or reestablished and (1) the corner as restored or reestablished, and (2) to at least 2 of the witness monuments shown on the drawing in (d), above.

NA - can't make ties as corner is covered.

C.S.M # 62 by Herbert Moore in June 1971 shows a 2" iron pipe S 1°36'E, 21.00 feet from the existing "school" fence. This monument is presently under a pile of concrete rubble and unaccessible. This monument does not fit any evidence as numerous references call for the S.W. corner of the "school" grounds as the section corner.

(f) Was the corner restored through acceptance of (1) an obliterated evidence location, or, (2) a found perpetuated location?

This corner was restored by acceptance of a found perpetuated location.
Refer: Vol. 196, Pg. 383-386, Register of Deeds records, for descriptions.

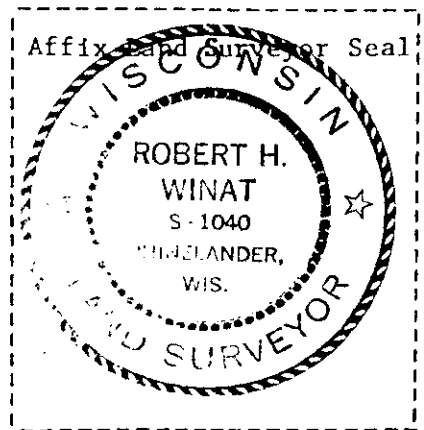
(g&h) Was the corner reestablished through lost corner proportionate methods? If so, show the method, including the directions and distances to other public land survey corners used as evidence or used for proportioning in determining the corner location?

NA

REGISTER'S OFFICE }
Oneida County, Wis. }

Received for Record the 28 day of
July A.D. 1983 at
2:20 o'clock P. M. and recorded in
Vol. 1 on page -----

Doris Verage Neuman
Register
Cynthia A. Pitts
Deputy



(i) I, Robert H. Winat, S-1040,
(type or print name) certify that the corner location shown on this record was determined by me or under my direction and control and that this U.S. Public Land Survey Monument Record is correct and complete to the best of my knowledge and belief.

Robert H. Winat Signature Date 29 April 1983

SEP 01 2023

KYLE J. FRANSON
REGISTER OF DEEDS

US PUBLIC LAND SURVEY MONUMENT RECORD

Per Wis. Admin. Code § A-E 7.08, a U.S. public land survey monument record shall be prepared and filed with the county survey records as part of any land survey within 60 days of setting or accepting the corner, which includes or requires the perpetuation, restoration, or use of a U.S. public land survey corner and when any of the situations in Wis. Admin. Code § A-E 7.08(1)(a), 7.08(1)(b) or 7.08(1)(c) arise.

3(a) Corner location:

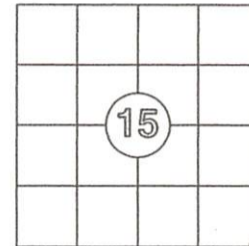
Found magnetic aluminum monument Southeast Corner Section 15 Township 36 North Range 9 East 4th Principal Meridian Town of Pelican Oneida Co., WI

Record County Coordinates:	Observed Coordinates:
N: 151507.15	N: 151507.10
E: 280978.78	E: 280978.76
Datum: NAD 1983 (91)	Datum: WISCRS
GNSS Control:	GNSS Control: WISCRS NETWORK
GNSS Method:	GNSS Method: RTK-Direct
Verification Method:	Verification Method: 1, 2

The coordinate value, if shown, has been verified by at least one of the following methods: 1) comparison to a previously GNSS determined published value; 2) The value is the average of two or more GNSS observations at markedly different times; 3) one or more distances were measured to the corner from temporary GNSS observed offset locations.

(b) History of Original Corner Establishment

Corner Set: Wood Post	Original Bearing Trees:
Original Surveyor: Wm. Daugherty	Yellow Pine, 15" N 26° E, 15 links
Date of Survey: July, 1863	Aspen, 14" S 49° w, 17 links



CORNER ID:
360915000

(b)(f)(g)(h) Description of monument found at this corner and, if it was accepted, state all evidence (material, testimonial, occupational, plats, record, other monuments) used as a basis for establishing location. If re-establishing through lost corner proportionate methods, indicate all monuments, distances and directions used to establish this location. Indicate type of monument and sign post found or set.

This is a continuation of a previous USPLSS Monument Record by Surveyor Robert Winat (1983). See previous record for additional history on this corner.

- April 29, 1983 - Robert Winat accepts and perpetuates a found 2" well point as the correct location of this corner. The fence and tree line shown on Winat's record are gone. The house trailer is also gone.
- Since 1983, many surveyors have accepted and used this location as the correct corner.
- 1998 - Milo Stefan remonuments the location with an Oneida County aluminum monument. Cap is stamped as such.
- August 19, 2023 - I found and accepted an Oneida County aluminum monument as the correct and accepted corner. The area is now heavily overgrown with Japanese knotweed.

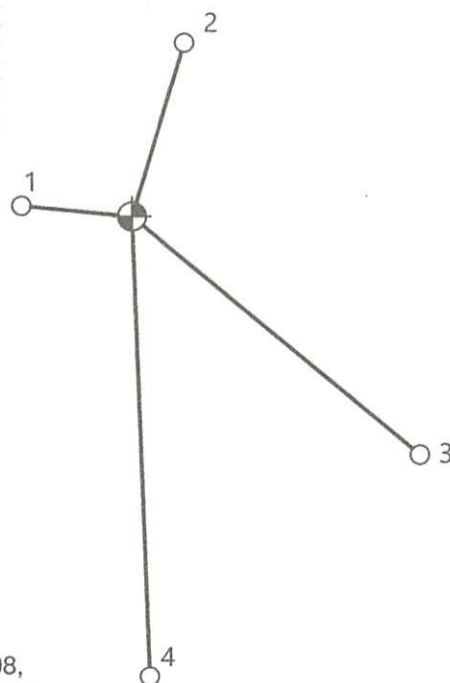
(4). All four of the magnetic aluminum monuments shown on Winat's record are gone. I set new witness corners, as shown below.

(c)(d)(e) Plan view of corner with ties to at least 4 witness monuments. If in disagreement with previously established corner, show the distances between the two corners and also indicate the ties to the disputed.

1. Set 1 1/4" x 18" iron pipe, N 84°19'09" W, 5.79'
2. Set 1 1/4" x 18" iron pipe, N 16°55'39" E, 9.44'
3. Set 1 1/4" x 18" iron pipe, S 50°11'04" E, 19.50'
4. Set 1 1/4" x 18" iron pipe, S 02°14'08" E, 24.10'



gravel
parking
area



Bearings: Grid
Scale: 1"=10'



(i) I, Anthony R. Jones, Wisconsin Professional Land Surveyor No S-2508, hereby certify that the corner location shown on this record was determined by me, or under my direction or control, and that this U.S. Public Land Survey Monument Record is correct and complete to the best of my knowledge and belief.

Anthony R. Jones, PLS No. S-2508

Date

8/19/23

Index No.

N-17