

5/23/2025

US PUBLIC LAND SURVEY MONUMENT RECORD

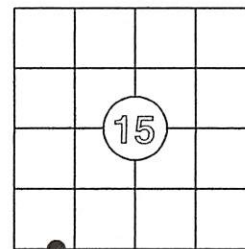
Per Wis. Admin. Code § A-E 7.08, a U.S. public land survey monument record shall be prepared and filed with the county survey records as part of any land survey within 60 days of setting or accepting the corner, which includes or requires the perpetuation, restoration, or use of a U.S. public land survey corner and when any of the situations in Wis. Admin. Code § A-E 7.08(1)(a), (b) or (c) arise.

3(a) Corner Identification:

Found 1" outside
diameter iron pipe
Meander Corner
Section 15
Township 36 North
Range 9 East
4th Principal Meridian
Town of Pelican
Oneida Co., WI

Observed Coordinates:
N: 150993.87
E: 276474.74
Datum: NAD83(2011)
GNSS Control: WISCRS
NETWORK
GNSS Method: RTK-Direct
Verification Method: 1

CORNER ID:
3609150034



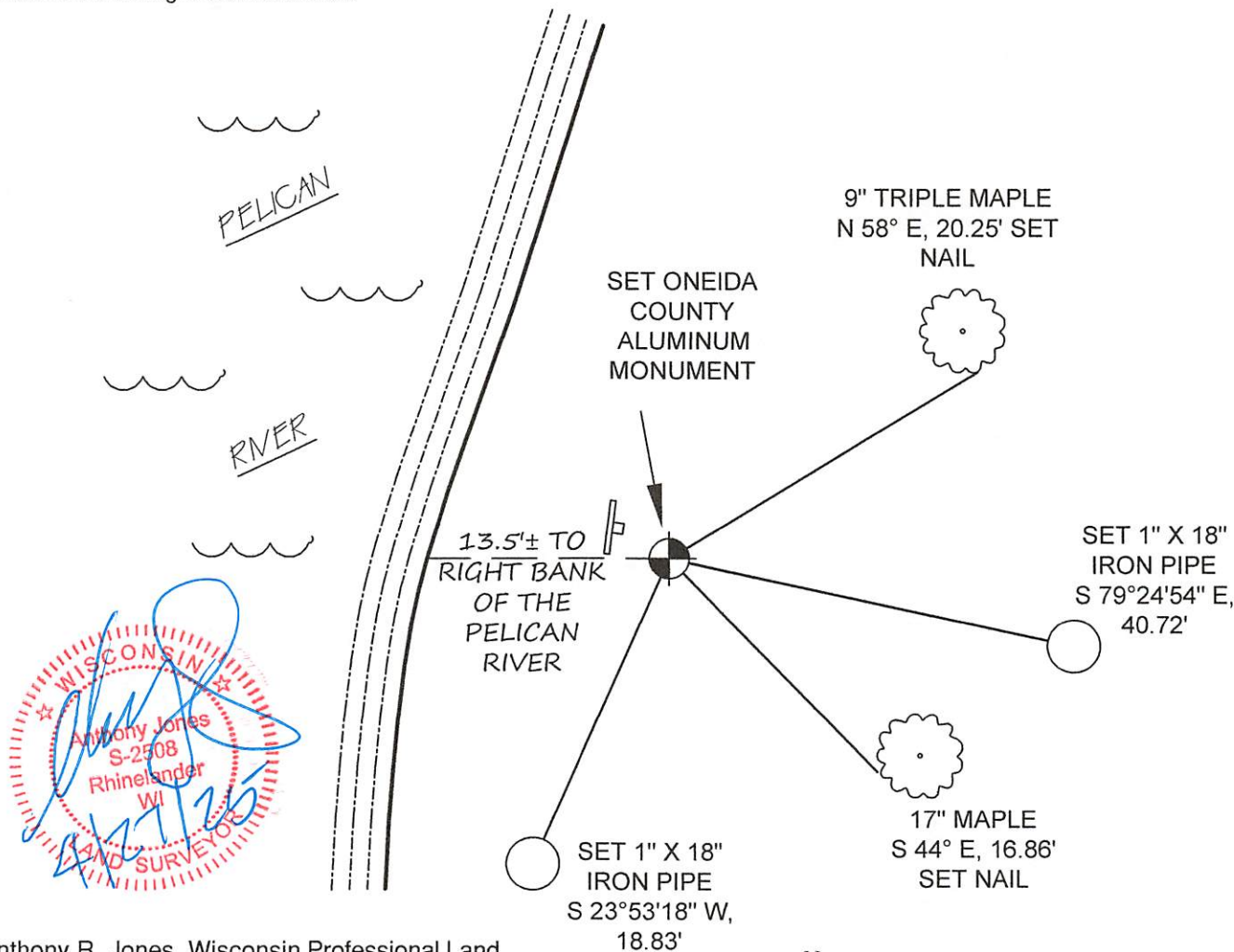
History of Original Corner Establishment

Corner Set: Wood Post
Original Surveyor: Wm. Daugherty
Date of Survey: July/August, 1863
Aspen 8", N 10° E, 20 links
Maple 12" S11° W, 31 links

The coordinate value has been verified by at least one of the following methods: 1) comparison to a previously GNSS determined published value; 2) The value is the average of two or more GNSS observations at markedly different times; 3) one or more distances were measured to the corner from temporary GNSS observed offset locations.

3(b)((c)(d)(f)(g)(h)) Description of monument found at this corner and, if it was accepted, state all evidence (material, testimonial, occupation, plats, records, other monuments) used as a basis for accepting. If not accepted or if nothing was found, state evidence used as a basis for establishing location. If re-established through lost corner proportionate measurements, indicate all monuments, distances and directions used to establish. Indicate type of monument found or set and sign post.

4/27/0000 - Surveyor William Badow, S-1182, show a set Oneida County aluminum monument. (Map No. B4566)
10/18/2002 - Surveyor William Badow, S-1182, shows a found 1 1/2" iron pipe for the meander corner. (Map No. B5130)
9/15/2005 - Surveyor Russ Brown, S-2148, shows a found 1 1/2" iron pipe for the meander corner. (Map No. B6280)
11/6/2006 - Surveyor Todd Loftus, S-1523, shows a found 1 1/4" iron pipe for the meander corner. (Map No. A1843)
6/12/2024 - Surveyor Todd Loftus, S-1523, shows a found 1 1/4" iron pipe for the meander corner. (Map No. A4235)
4/27/2025 - I, Anthony R. Jones, S-2508, found a 1" outside diameter iron pipe in the location previously established by others. I set a 2 1/2" x 30" Oneida County aluminum monument and made new witnesses, shown below and set a plastic guard post east, 0.8". The monument is flush with the ground and stamped to identify the corner. Todd Allgood, an adjacent landowner, was witness to the setting of this monument.



3(i)

I, Anthony R. Jones, Wisconsin Professional Land Surveyor No S-2508, hereby certify that the corner location shown on this record was determined by me, or under my direction or control, and that this U.S. Public Land Survey Monument Record is correct and complete to the best of my knowledge and belief.



Bearings (to pipes): Grid
Bearings (to nails): Magnetic
Scale: 1"=20'