

This form is intended to fulfill the requirements of Chapter A-E 7.08 (3)(a) thru (i) U.S. Public Land Survey Monument Location Record, Wisconsin Administrative Code. Use the reverse side of form for continuation.

U.S. PUBLIC LAND SURVEY MONUMENT LOCATION RECORD

Recorders Data

USPLS CORNER: NORTH MC SECTION: 14 TOWNSHIP: 36 NORTH RANGE: 09 EAST
 NAME OF WATERWAY FOR M.C. CORNER : GEORGE LAKE SECTION LINE: WEST
 (CITY)(VILLAGE)(TOWN) OF: PELICAN COUNTY OF: ONEIDA

Description of monument found or placed and all other evidence used as the basis for monument location; including monuments and related measurements required if the corner location was reestablished by lost corner proportionate methods. Also indicate name of original surveyor, original survey date and the corner monument, bearing trees, witness or other reference monuments established; including measured bearing and distance ties, from available records.

Found and accepted an older undisturbed and plumb 2" dia. iron pipe with uncapped top 8" above crown of rock cairn at grade. I pulled the pipe and set a standard 2" dia. by 30" long aluminum pipe monument with cast aluminum point and stamped Oneida County cap into the pipe soil cavity to 5" above cairn crown. I left old 30" long iron pipe flat on grade nearby.

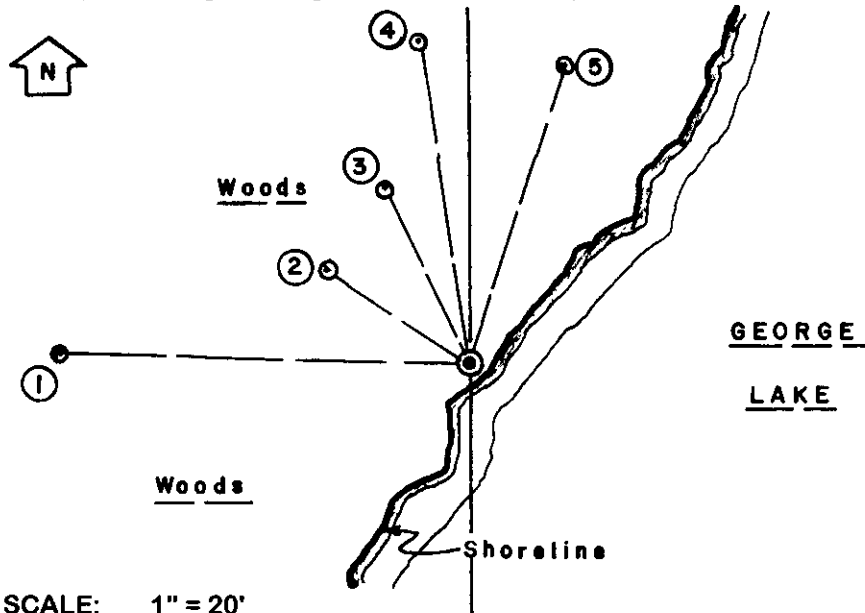
In August 1865, William E. Daugherty/GLO set a wood post as the original corner and marked OBTs: a 10" Aspen N48°E 37 links and a 25" Py S73°W 8 links; post and NE OBT now obliterated, but SW OBT now a probable rotted Pr stump but at N60°W 6.0' to center, as no other old evidence found nearby.

In November 1940, V.M. Maine found original GLO MC on North bank of George Lake and 24" Py OBT stump S73°W at .08 chains with boxing blaze plain and also log remnant of other OBT with some iron marks and boxing scar. He set a new Oak post at the MC and marked a new BT 10" Ob West 64.5 links; post now gone but the BT found this date with no visible markings and used for new tie below.

In May 1976, Sy M. Poskie/RLS 140 notes an "iron marker" at this corner and Maines 1940 BT as 12" Oak West 42.5' per Plat of Survey L-907 in Oneida County survey records; therefore, I am confident original GLO MC has been perpetuated.

This recovery completed September 28, 2001 and directly witnessed by William Patterson, owner of lake frontage parcel at Fire No. 4331 Island View Road and NW of this corner.

Plan view map of monument location with bearing and distance ties to a minimum of four(4) described witness or reference monuments of concrete, natural stone, iron, live bearing trees or equivalent material. If applicable, also show a minimum of two(2) bearing and distance ties to any other monument found and not accepted; including the bearing and distance from the accepted monument.



- WITNESS MONUMENT TIES:**
- ① Old BT 22" Ob N88°W 42.5' to center.
 - ② New BT 5" Pw N56°W 17.87'.
 - ③ New BT 12" Pw N26°W 20.16'.
 - ④ New BT 13" Pr N09°W 34.20'.
 - ⑤ New BT 12" Mr N18°E 32.77'.
- Standard white poly 'T' corner marker post set along SE side of new corner monument.
- Corner falls about 1.5' NW of existing shoreline of George Lake this date.
- Section line is S04.5°W to South MC.

SCALE: 1" = 20'

Unless otherwise indicated, all bearing tree ties are to a .25" dia. by 2.5" long PK nail with a 1.25" dia. steel washer driven into unblazed right face and a .25" dia. by 2.5" long PK nail with a 2" dia. steel washer stamped BT is also driven into unblazed face of bearing tree at DBH; the basis for measured bearings is by compass to nearest degree and all tie distances are measured horizontal by steel tape corrected to nearest 1/100th feet at standard temperature of 68° F.

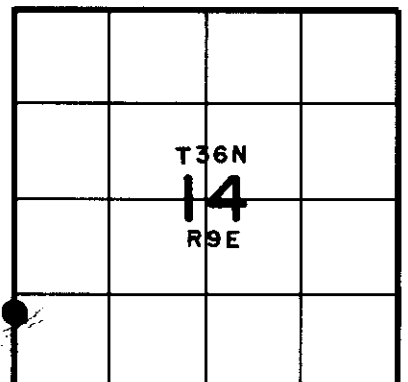
RLS SEAL:



LAND SURVEYOR CERTIFICATE:

I, William C. Rohde, hereby certify that I am duly licensed as a Professional Land Surveyor in the State of Wisconsin; that this USPLS monument location was determined by me and/or under my direct supervision and control; and that this U.S. Public Land Survey Monument Location Record is true and correct to the best of my knowledge and belief.

Signed: *William C. Rohde*
 William C. Rohde RLS 841



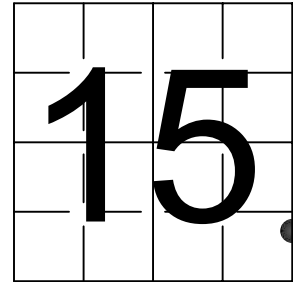
SECTION LOCATION MAP
 INDEX NO. *M N 14*

U. S. PUBLIC LAND SURVEY MONUMENT RECORD

NOTE: This form is intended and designed to fulfill all requirements of Wisconsin Administrative Code, Chapter A-E 7.08 U.S. Public Land Survey Monument Record (3) (a-i)

A-E 7.08(3)(a) Identity of corner:
MEANDER CORNER EAST LINE OF
SECTION 15, TOWNSHIP 36 NORTH,
RANGE 09 EAST OF THE 4TH PM,
TOWN OF PELICAN,
COUNTY OF ONEIDA

WISCRS - ONEIDA COUNTY
N: 152,615.842 USft (XXX,XXX.XXX)
E: 280,945.720 USft (XXX,XXX.XXX)
Datum: NAD83 (2011)
GNSS Method RTK
GNSS Control WISCORS VRS



The coordinate value shown has been verified by the average of two or more GPS observations at a markedly different time. Coordinates shown in parenthesis are previously published values.

A-E 7.08(3)(b)

Original Surveyor: William E. Daugherty - July 30, 1863 - August 11, 1863

Original Accessories:

| | | | |
|-------------|----|---------|----------|
| Yellow Pine | 25 | S 73° W | 8 Links |
| Aspen | 10 | N 48° E | 37 Links |

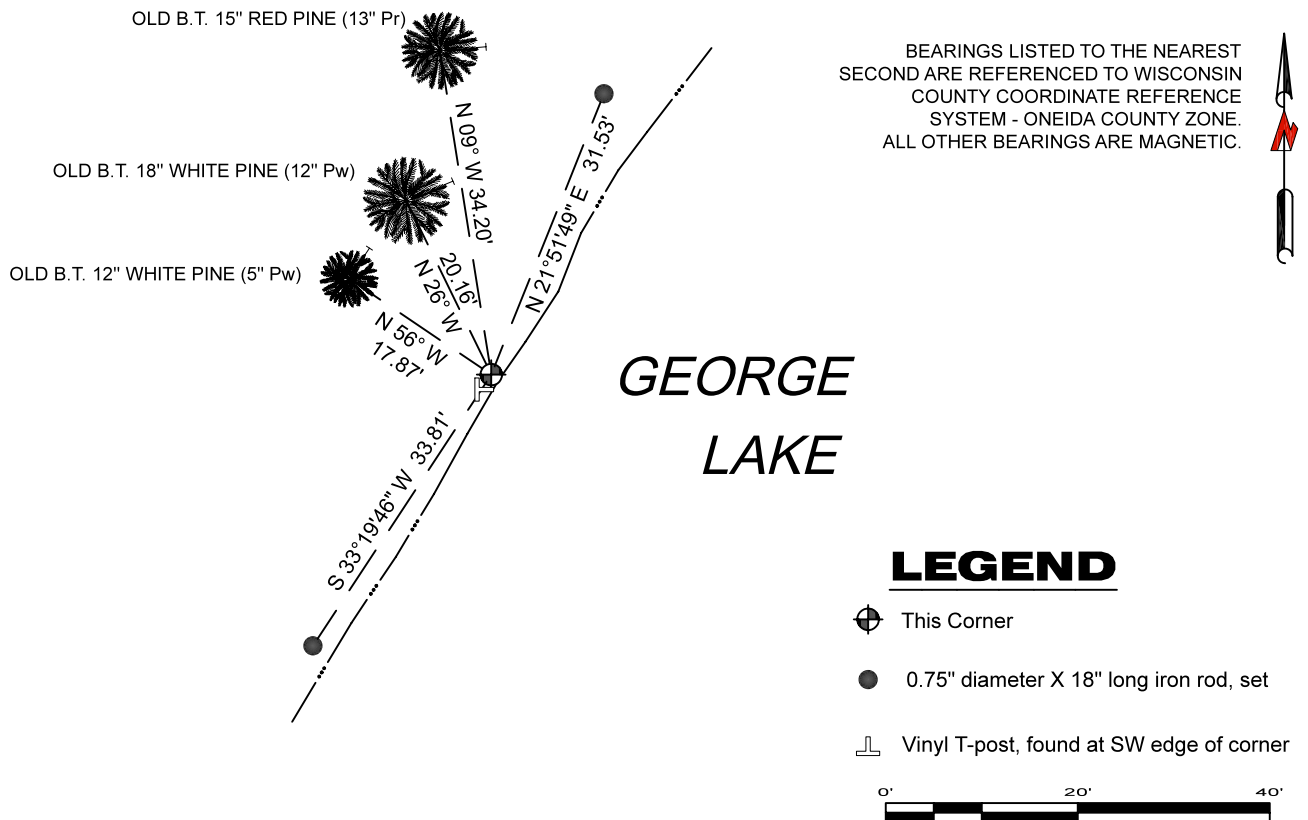
See previous U.S. Public Land Survey Monument Location Record - M N-17 - March 25, 2002 - Surveyor 841 - William C. Rohde - THENCE:

September 5, 2003 - Surveyor 2335 - James L. Rein - indicates this position as "capped 2-1/2" aluminum monument found" on Oneida County Map #C1997.

November 9, 2023 - I found an Oneida County - 2.4" diameter aluminum pipe with a 3.25" diameter aluminum cap stamped to identify the corner location. The monument is ±1 foot from the shore of George Lake. I also found 3 of Rohde's bearing trees alive and in good condition, and one dead and standing. I established 2 new witnesses as shown below.

A-E 7.08(3)(c)(d) Plan view of corner with references to at least 4 witness monuments.

ALL B.T.'s HAVE A FOUND MAG NAIL AND WASHER (MARKED B.T.) IN THE FACE OF THE TREE.
ALL B.T.'s HAVE A FOUND MAG NAIL AND WASHER IN THE SIDE OF TREE, AS SHOWN.

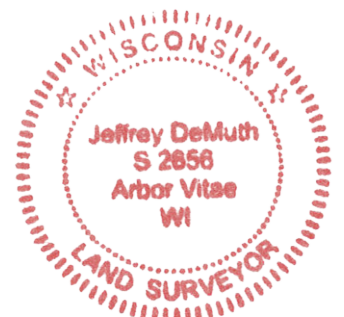


A-E 7.08(3)(e) 2002 Surveyor set a 2" diameter aluminum pipe monument with a stamped Oneida County cap. Subsequent surveyors found the same, as did I in 2023.

A-E 7.08(3)(f) I accept this monument as a FOUND PERPETUATED LOCATION of the corner.

A-E 7.08(3)(g)(h) This corner was not determined through lost-corner-proportionate methods.

A-E 7.08(3)(i) I, Jeffrey L. DeMuth, Professional Land Surveyor No. S-2656, hereby certify that the corner location on this record was determined by me or under my direction and control, and that this U.S. Public Land Survey Monument Record is correct and complete to the best of my knowledge, and belief.



SIGNATURE

DATE