

025  
16.08.85  
Rind.

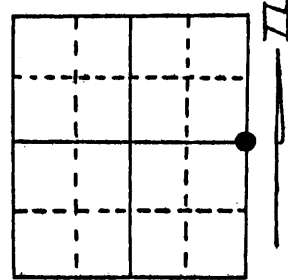
# U.S. PUBLIC LAND SURVEY MONUMENT RECORD

Note: This form is intended and designed to fulfill all requirements of Wisconsin Administrative Code, Chapter A-E 5.02, U.S. Public Land Survey Monument Record (3) (a) (b) (c) (d) (e) (f) (g) (h) (i). An additional sheet may be added if necessary to conform with said requirements.

(a) Corner location: Township 36 North  
Range 9 (East) West

Town/City/Village Pelican

County Oneida



Section 15

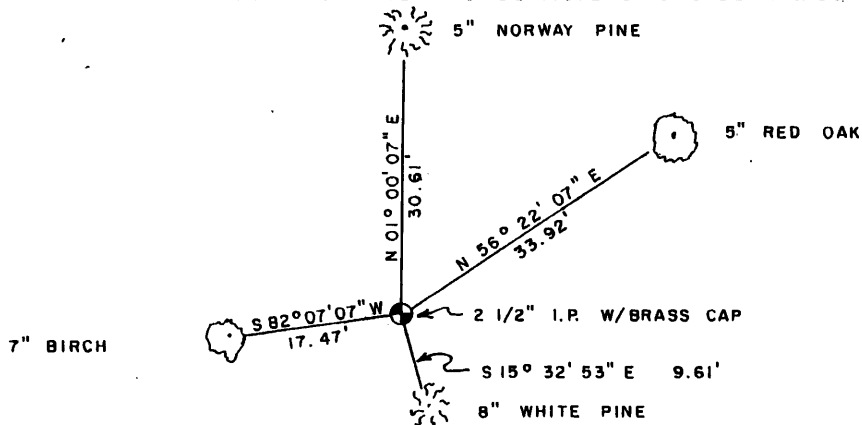
(b) (f) (g) (h) Description of monument found at this corner and if it was accepted, state all evidence (material, testimonial, occupational, plats, records, other monuments) used as a basis for accepting. If not accepted or if nothing was found, state evidence used as basis for establishing location. If reestablished through lost corner proportionate methods, indicate all monuments, distances and directions used to establish.

(b) Recovered 2 1/2" iron pipe with a brass cap next to a (4"X4" square) oak post.

C.S.M. 440, 439, 585, 1163, and the Riopel Plat.

D.H. Vaughan's survey of 1902 and 1908 as recorded in the Oneida County Surveyor records, page 199.

(c) (d) (e) Plan view of corner with ties to at least 4 witness monuments. If in disagreement with previously established corner, show the distances between the two corners and also indicate the ties to the disputed corner.



N  
MAGNETIC

NOTE:

ALL TREES ARE BLAZED.

ALL DISTANCES ARE MEASURED TO THE HEAD OF THE P.K. NAILS WHICH ARE SET IN THE CENTER OF EACH BLAZED TREE.

(i) I, John S. Zierden, S-1742  
(type or print name) certify that the corner location on this record was determined by me or under my direction and control and that this U.S. Public Land Survey Monument Record is correct and complete to the best of my knowledge and belief.



Index No. L-17

John S. Zierden 10/16/85  
Signature Date

21.09157000