

U. S. PUBLIC LAND SURVEY MONUMENT RECORD

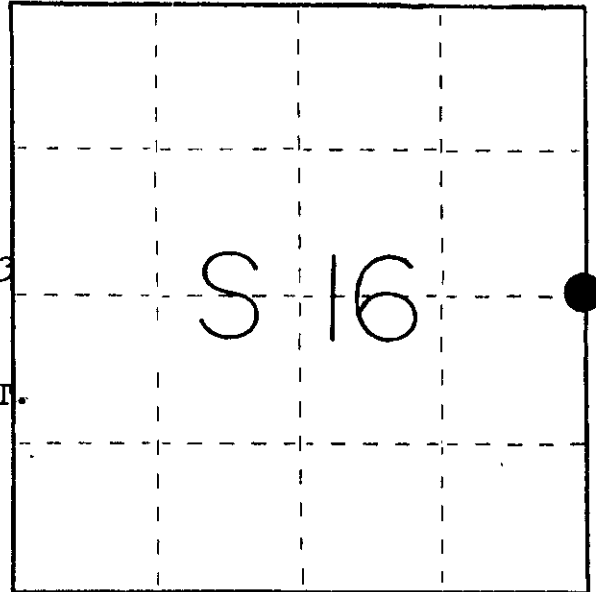
I N S T R U C T I O N S : This record shall show the location of the corner and shall include all of the following nine elements (a through i).

(a) Identify the corner by reference to the U.S. public land survey system.

● = Corner monument restored.

**EAST 1/4 CORNER,
SECTION 16, TOWNSHIP 36 NORTH,
RANGE 9 EAST, ONEIDA COUNTY, WIS.**

- Orig. corner set by W.E. Daugherty in 1863 ... north between 15 & 16 40.00 set post orig. B.T.s Cedar 12 N 37 E 12lks.; Fir 7 N 55 W 8lks.
- 1902 D.H. Vaughan @ corner found 1 old B.T. and 1 new B.T. He does not record bearings or distances



(b) Describe any record evidence, monument evidence, occupational evidence, testimonial evidence or any other material evidence you considered, and whether the monument was found or placed.

At this corner I set an Aluminum Oneida County monument 5' in length and 3' in the ground.

(c) In the plan view drawing below, provide reference ties to at least 4 witness monuments, or, if the location is within a municipality, to at least 2 witness monuments. (Witness monuments shall be made of concrete, natural stone, iron or other equally durable material.) Describe witness monuments.

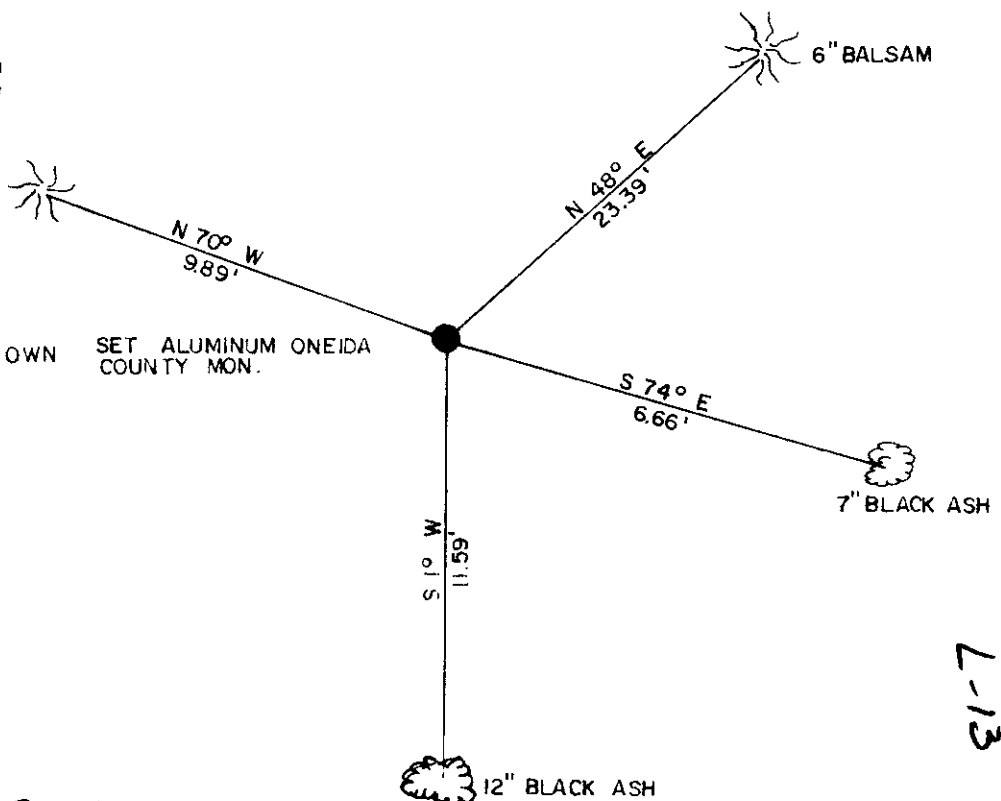
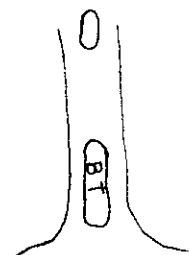
(d) Show a plan view drawing depicting the relevant monuments and reference ties which is sufficient in detail to enable accurate relocation of the corner monument if the corner monument is disturbed. Indicate north.



MAGNETIC BEARINGS WITH HAND HELD COMPASS

- DISTANCES MEASURED TO IRON NAILS IN APPROX. CENTER OF TREES
- TREES SCRIBED & BLAZED AS SHOWN

SET ALUMINUM ONEIDA COUNTY MON.



360916 2000

L-13

(e) Describe any material discrepancy between the location of the corner as restored or reestablished and the location of that corner as previously restored or reestablished by distance and direction. Show the discrepancy on the plan view drawing under (d), above. Show the distances between the corner as previously restored or reestablished and (1) the corner as restored or reestablished, and (2) to at least 2 of the witness monuments shown on the drawing in (d), above.

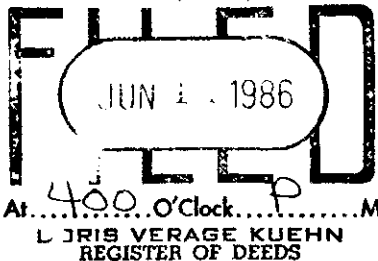
(f) Was the corner restored through acceptance of (1) an obliterated evidence location, or, (2) a found perpetuated location?

This corner was restored by acceptance of obliterated evidence.

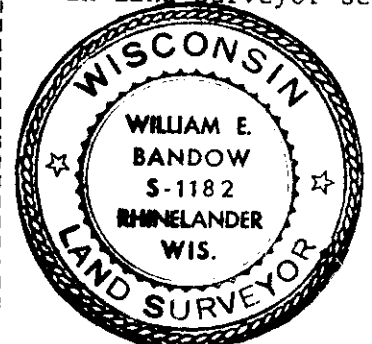
(g&h) Was the corner reestablished through lost corner proportionate methods? If so, show the method, including the directions and distances to other public land survey corners used as evidence or used for proportioning in determining the corner location?

No. This corner was reestablished by establishing an index correction factor of D.H. Vaughans distances on $\frac{3}{4}$ of a mile of line in Sec. 16 versus our distances for the same $\frac{3}{4}$ mile. The index was then applied to D.H. Vaughans distances from the S.E. corner to the E $\frac{1}{4}$ and from the center of section to the E $\frac{1}{4}$ corner.

REGISTER OF DEEDS OFFICE
ONEIDA COUNTY, WIS.



Affix Land Surveyor Seal



(1) I, William E. Bandow

(type or print name) certify that the corner location shown on this record was determined by me or under my direction and control and that this U.S. Public Land Survey Monument Record is correct and complete to the best of my knowledge and belief.

William E. Bandow

9-20-83

Signature

Date

William E. Bandow R.L.S. 1182

Genisot & Associates Inc. Rhineland, Wis.