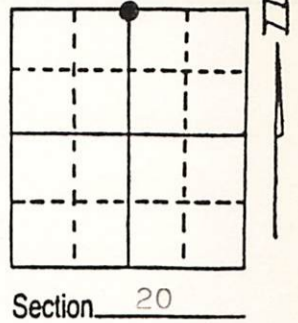


U.S. PUBLIC LAND SURVEY MONUMENT RECORD

Note: This form is intended and designed to fulfill all requirements of Wisconsin Administrative Code, Chapter A-E 5.02, U.S. Public Land Survey Monument Record (3) (a) (b) (c) (d) (e) (f) (g) (h) (i). An additional sheet may be added if necessary to conform with said requirements.

(a) Corner location: Township 36 North
 Range 9 East/West
 Town/City/Village Pelican
 County Oneida

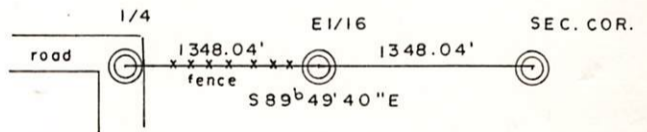


(b) (f) (g) (h) Description of monument found at this corner and if it was accepted, state all evidence (material, testimonial, occupational, plats, records, other monuments) used as a basis for accepting. If not accepted or if nothing was found, state evidence used as basis for establishing location. If reestablished through lost corner proportionate methods, indicate all monuments, distances and directions used to establish.

Original corner set by W. E. Daugherty 1863
 Bts. Fir. 10", N61° W, 18 links. Maple 6", s 88° E, 8 lks.

Found E 1/16 being a 3" iron pipe and Bts. doubled over from NE. sec. cor. bearing of line follows old fence and corner falls in old town road as shown on sketch map of Vaughansbook 2, Pg. 47.

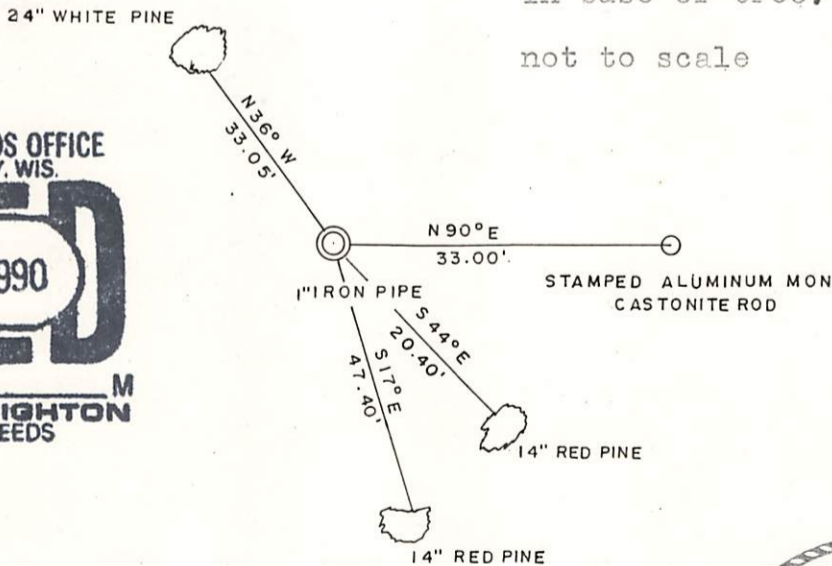
Set iron pipe in dirt drive way, fence bears east, roads bear south and west.



(c) (d) (e) Plan view of corner with ties to at least 4 witness monuments. If in disagreement with previously established corner, show the distances between the two corners and also indicate the ties to the disputed corner.

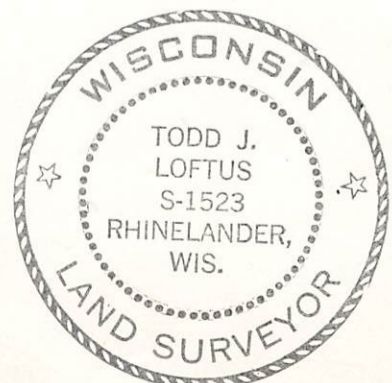
Bearings taken with hand compass
 distance taken to nail in base of tree.
 not to scale

REGISTER OF DEEDS OFFICE
 ONEIDA COUNTY, WIS.
FILED
 JUN 1 1990
 At _____ O'Clock _____ M
 THOMAS H. LEIGHTON
 REGISTER OF DEEDS



(i) I, Todd J. Loftus
 (type or print name) certify that the corner location on this record was determined by me or under my direction and control and that this U.S. Public Land Survey Monument Record is correct and complete to the best of my knowledge and belief.

Todd J. Loftus 5/15/1990
 Signature Date



Index No. N - 7

3609170020