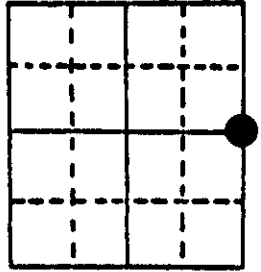


U.S. PUBLIC LAND SURVEY MONUMENT RECORD

Note: This form is intended and designed to fulfill all requirements of Wisconsin Administrative Code, Chapter A-E 5.02, U.S. Public Land Survey Monument Record (3) (a) (b) (c) (d) (e) (f) (g) (h) (i). An additional sheet may be added if necessary to conform with said requirements.

(a) Corner location: Township 36 North
 Range 9 East



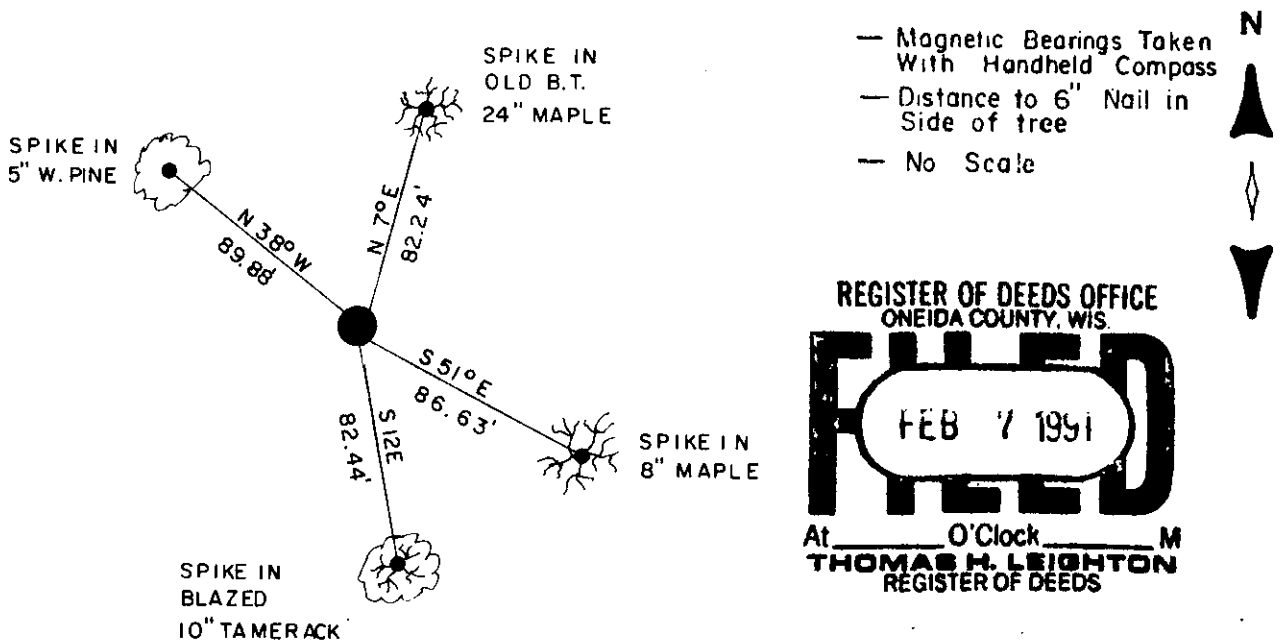
Town/ Pelican
 County Oneida

Section 17

(b) (f) (g) (h) Description of monument found at this corner and if it was accepted, state all evidence (material, testimonial, occupational, plats, records, other monuments) used as a basis for accepting. If not accepted or if nothing was found, state evidence used as basis for establishing location. If reestablished through lost corner proportionate methods, indicate all monuments, distances and directions used to establish.

- 1863 Daugherty 40 ch. set Post Hemlock 18" S 59 W 19 lks., Hemlock 14" N 52 E 28 lks.
- 1885 Dorr at corner
- 1923 Vaughan set corner from testimony of two land owners that remember where old post stood.
- 1971 Fisher iron nail set
- 1976 Bandow found iron rod P/P, NW, 66.23', P/P, SW, 52.12' Elm 34" NE 37.04' 8" Hemlock, SE, 82.16'
- 1977 Immich found iron rod
- 1990 William E. Bandow found iron rod and witnessed as shown below. White survey marker post S 45 E 25.00'. Iron rod is in east edge of bituminous of Germond Road and on center line of Hilltop Road.

(c) (d) (e) Plan view of corner with ties to at least 4 witness monuments. If in disagreement with previously established corner, show the distances between the two corners and also indicate the ties to the disputed corner.



REGISTER OF DEEDS OFFICE
 ONEIDA COUNTY, WIS.
FILED
 FEB 7 1991
 At _____ O'Clock _____ M
THOMAS H. LEIGHTON
 REGISTER OF DEEDS

(i) I, William E. Bandow
 (type or print name) certify that the corner location on this record was determined by me or under my direction and control and that this U.S. Public Land Survey Monument Record is correct and complete to the best of my knowledge and belief.

William E. Bandow 2-1-91
 Signature Date

GENISOT & ASSOCIATES INC.
 1512 EAGLE ST., RHINELANDER, WIS.



Index No. L-9

3609172000

U.S. PUBLIC LAND SURVEY MONUMENT RECORD

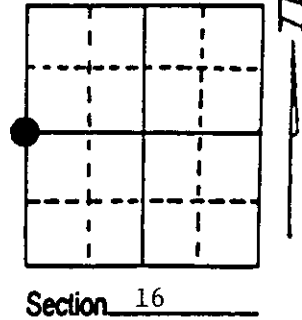
Note: This form is intended and designed to fulfill all requirements of Wisconsin Administrative Code, Chapter A-E 7.08 U.S. Public Land Survey Monument Record (3) (a) (b) (c) (d) (e) (f) (g) (h) (i). An additional sheet may be added if necessary to conform with said requirements.

(a) Corner location: Township 36 North

Range 9 East/West

Town/City/Village PELICAN

County ONEIDA



(b) (f) (g) (h) Description of monument found at this corner and if it was accepted, state all evidence (material, testimonial, occupational, plats, records, other monuments) used as a basis for accepting. If not accepted or if nothing was found, state evidence used as basis for establishing location. If reestablished through lost corner proportionate methods, indicate all monuments, distances and directions used to establish. Indicate type of monument found or set and sign post.

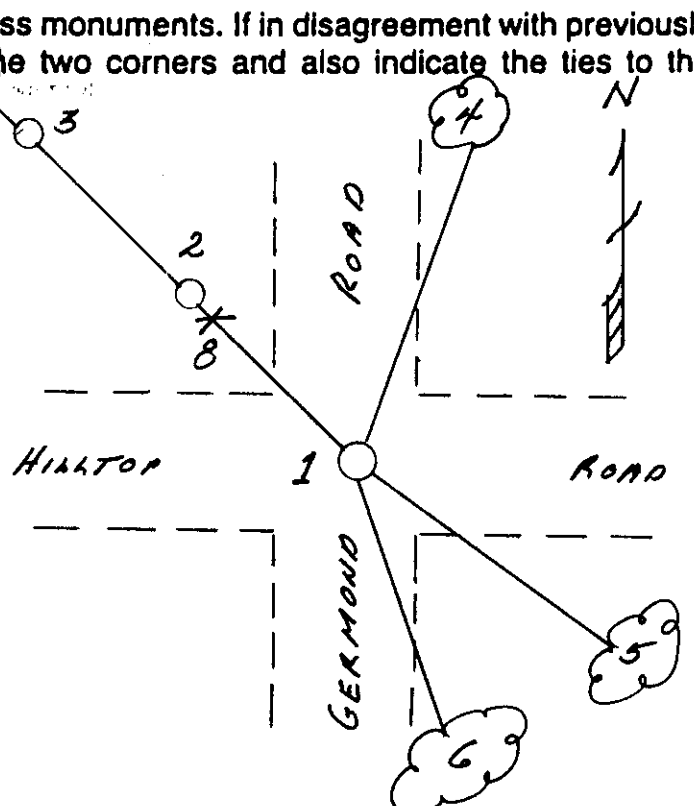
6/13/1993 - Found 5/8" re-rod in road surface. We tied it off so that position could be restored when road was surfaced.

4/19/1994 - We placed a railroad spike for corner with two reference monuments: a 2" x 30" aluminum monument and a 3/4" x 30" re-bar. Plastic sign post and four bearing trees made in 1993 and are in good condition.

(c) (d) (e) Plan view of corner with ties to at least 4 witness monuments. If in disagreement with previously established corner, show the distances between the two corners and also indicate the ties to the disputed corner.

- 1) Railroad spike.
- 2) 2" x 30" aluminum monument, N48°W, 64.87'.
- 3) 3/4" x 30" re-bar, N48°W, 89.10'.
- 4) 24" Red Maple, N7°E, 82.61'.
- 5) 8" Red Maple, S51°E, 86.63'.
- 6) 10" Tamarack, S12°E, 82.27'.
- 7) 5" White Pine, N48°W, 89.83'.
- 8) Plastic sign post, N48°W, 64.1'.

Distances are to nail in side of BTs.
Stump blazes scribed "BT".



(i) I, Milo E. Stefan
(type or print name) certify that the corner location on this record was determined by me or under my direction and control and that this U.S. Public Land Survey Monument Record is correct and complete to the best of my knowledge and belief.

Milo E. Stefan
Signature

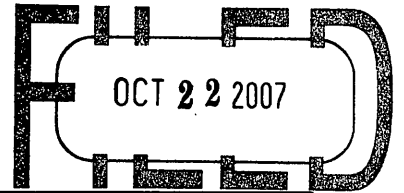
May 9, 1994
Date



Stamp

Index No. L-9

3609172000



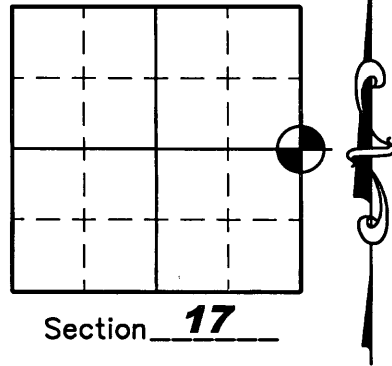
At _____ O'Clock _____ M
U.S. PUBLIC LAND SURVEY MONUMENT RECORD LIGHTON
REGISTER OF DEEDS

NOTE: This form is intended and designed to fulfill all requirements of Wisconsin Administrative Code, Chapter A-E 7 .08 U.S. Public Land Survey Monument Record (3)(a)(b)(c)(d)(e)(f)(g)(h)(i). An additional sheet may be added if necessary to conform with said requirements.

(a) Corner location: Township 36 North
Range 09 East

Town of PELICAN

County of ONEIDA

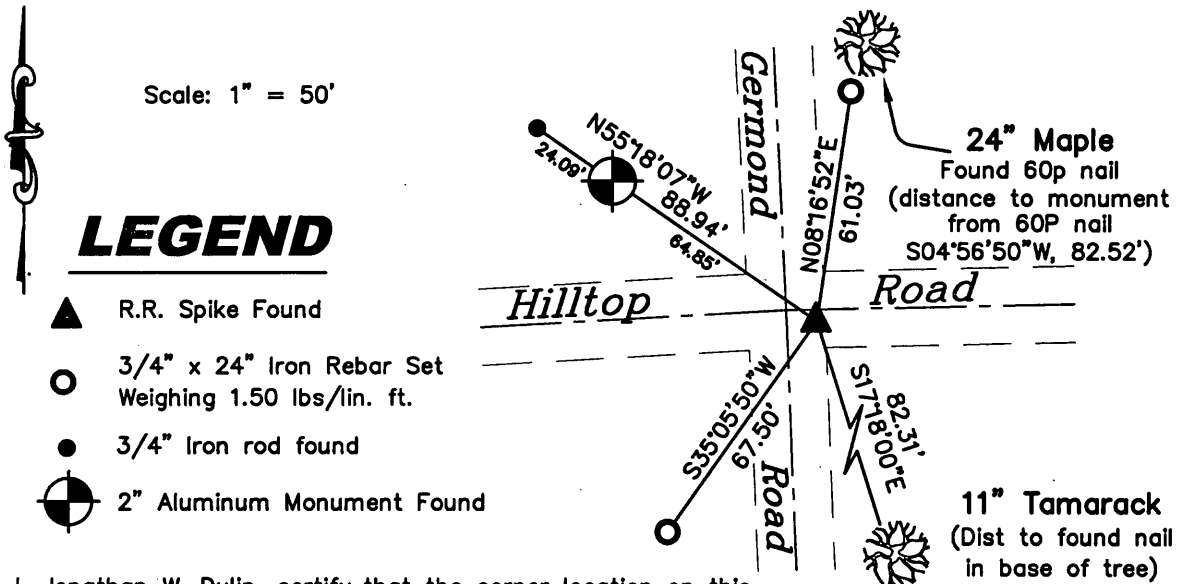


(b)(f)(g)(h) Description of monument found at this corner and if it was accepted, state all evidence (material, testimonial, occupation, plats, records, other monuments) used as a basis for accepting. If not accepted or if nothing was found, state evidence used as a basis for establishing location. If reestablished through lost corner proportionate methods, indicate all monuments, distances and directions used to establish. Indicate type of monument found or set and sign post.

1990 - William E. Bandow found an iron rod in the East edge of bituminous of Germond Road and on the centerline of Hilltop Road and witnessed corner - See U.S.P.L.S Monument Record dated February 1, 1991

August 24, 2004 - Due to road construction Nicolet Surveyors, Inc. was contacted by Oneida County Land Information Office to preserve the location of this survey marker. Jonathan W. Dulin found a Railroad spike in the East edge of the blacktop of Germond Road and at the centerline of Hilltop Road along with two bearing trees and two witness corners. We set new witness corner as shown below.

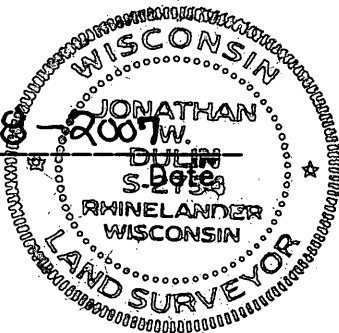
(c)(d)(e) Plan view of corner with ties to at least 4 witness monuments. If in disagreement with previously established corner, show the distances between the two corners and also indicate the ties to the disputed corner.



(i) I, Jonathan W. Dulin, certify that the corner location on this record was determined by me under my direction and control and that this U.S. Public Land Survey Monument is correct and complete to the best of my knowledge and belief.

Signature Jonathan W. Dulin

10-08-2007



Index No. L-9

3609172000

JAN 25 2013

AT _____ O'CLOCK _____ M
KYLE J. FRANSON
REGISTER OF DEEDS

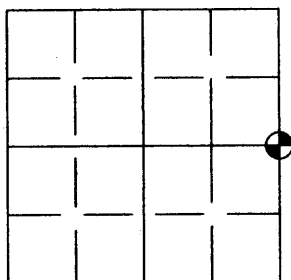
U.S. PUBLIC LAND SURVEY MONUMENT RECORD

Note: This form is intended and designed to fulfill all requirements of the Wisconsin Administrative Code, Chapter A-E 7.08 U.S. Public Land Monument Record (3)(a)(b)(c)(d)(e)(f)(g)(h)(i).
An additional sheet may be added if necessary to conform with said requirements.

(a) CORNER LOCATION: Oneida County Corner I.D. No.:

3609172000

East 1/4 Corner, Sec. 17
Township 36 North
Range 9 East
Town of Pelican
County of Oneida



SECTION 17

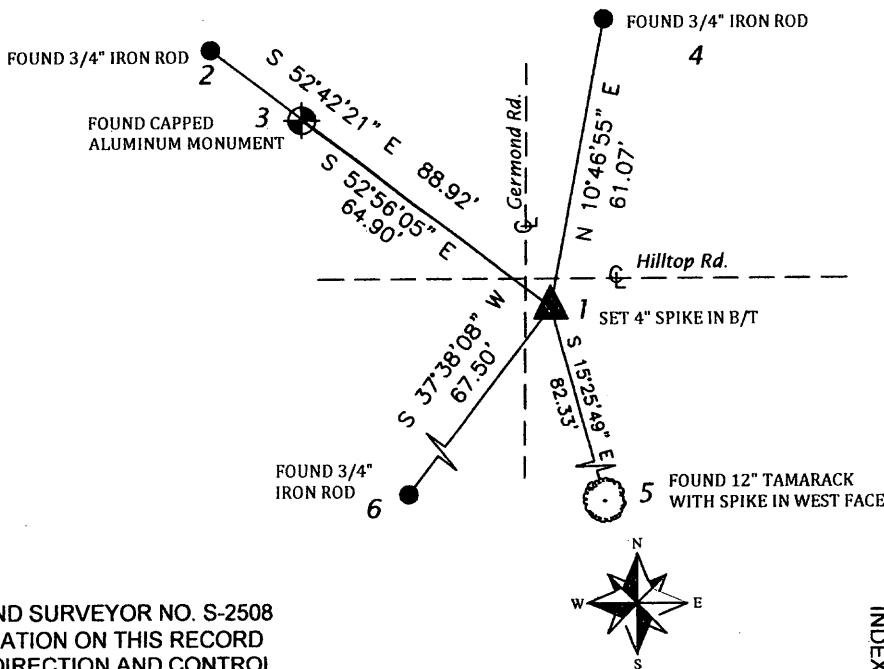
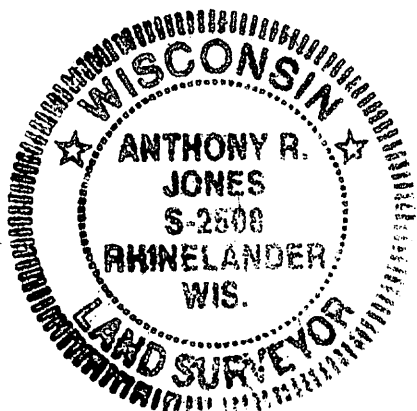
(f)(g)(h) DESCRIPTION OF MONUMENT FOUND AT THIS CORNER AND IF IT WAS ACCEPTED, STATE ALL EVIDENCE (MATERIAL, TESTIMONIAL, OCCUPATIONS, PLATS, RECORDS, OTHER MONUMENTS) USED AS A BASIS FOR ESTABLISHING LOCATION. IF NOT ACCEPTED OF IF NOTHING WAS FOUND, STATE EVIDENCE USED AS BASIS FOR ESTABLISHING LOCATION. IF REESTABLISHED THROUGH LOST CORNER PROPORTIONATE METHODS, INDICATE ALL MONUMENTS, DISTANCES AND DIRECTIONS USED TO ESTABLISH. INDICATE TYPE OF MONUMENT AND SIGN POST FOUND OR SET.

OCTOBER 10, 2007 - U.S. PUBLIC LAND SURVEY MONUMENT RECORD BY JON DULIN CALLS MONUMENT AS FOUND RAILROAD SPIKE.

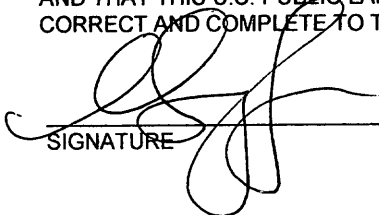
APRIL 2, 2012- PRE-CONSTRUCTION REPORT FILED BY ANTHONY JONES. FOUND EAST 1/4 CORNER, SEC. 17-36-09 AS DESCRIBED. ALL TIES AS SHOWN BELOW. TIE TO TAMARACK IS NAIL IN THE WEST FACE FOR DISTANCE AND CENTER OF BLAZE FOR BEARING.

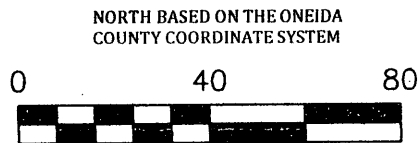
SEPTEMBER 2, 2012- RE-CONSTRUCTION OF GERMOND ROAD COMPLETE. SET 4" BERNTSEN SPIKE PER TIES SHOWN ON PRE-CONSTRUCTION REPORT.

(c)(d)(e) PLAN VIEW OF CORNER WITH TIES TO AT LEAST 4 WITNESS MONUMENTS. IF IN DISAGREEMENT WITH PREVIOUSLY ESTABLISHED CORNER, SHOW THE DISTANCE BETWEEN THE TWO CORNERS AND ALSO INDICATE THE TIES TO THE DISPUTED CORNER.



(i) I, ANTHONY R. JONES, REGISTERED LAND SURVEYOR NO. S-2508 HEREBY CERTIFY THAT THE CORNER LOCATION ON THIS RECORD WAS DETERMINED BY ME OR UNDER MY DIRECTION AND CONTROL AND THAT THIS U.S. PUBLIC LAND SURVEY MONUMENT RECORD IS CORRECT AND COMPLETE TO THE BEST OF MY KNOWLEDGE AND BELIEF.

SIGNATURE  DATE 9/2/2012



INDEX NO. L-9