

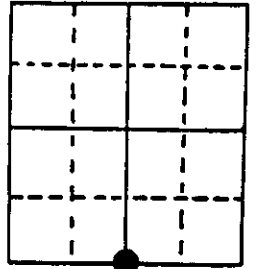
U.S. PUBLIC LAND SURVEY MONUMENT RECORD

Note: This form is intended and designed to fulfill all requirements of Wisconsin Administrative Code, Chapter A-E 7.08 U.S. Public Land Survey Monument Record (3) (a) (b) (c) (d) (e) (f) (g) (h) (i). An additional sheet may be added if necessary to conform with said requirements.

(a) Corner location: Township 36 North
 Range 9 East/West

Town/City/Village PELICAN

County ONEIDA



Section 18

(b) (f) (g) (h) Description of monument found at this corner and if it was accepted, state all evidence (material, testimonial, occupational, plats, records, other monuments) used as a basis for accepting. If not accepted or if nothing was found, state evidence used as basis for establishing location. If reestablished through lost corner proportionate methods, indicate all monuments, distances and directions used to establish. Indicate type of monument found or set and sign post.

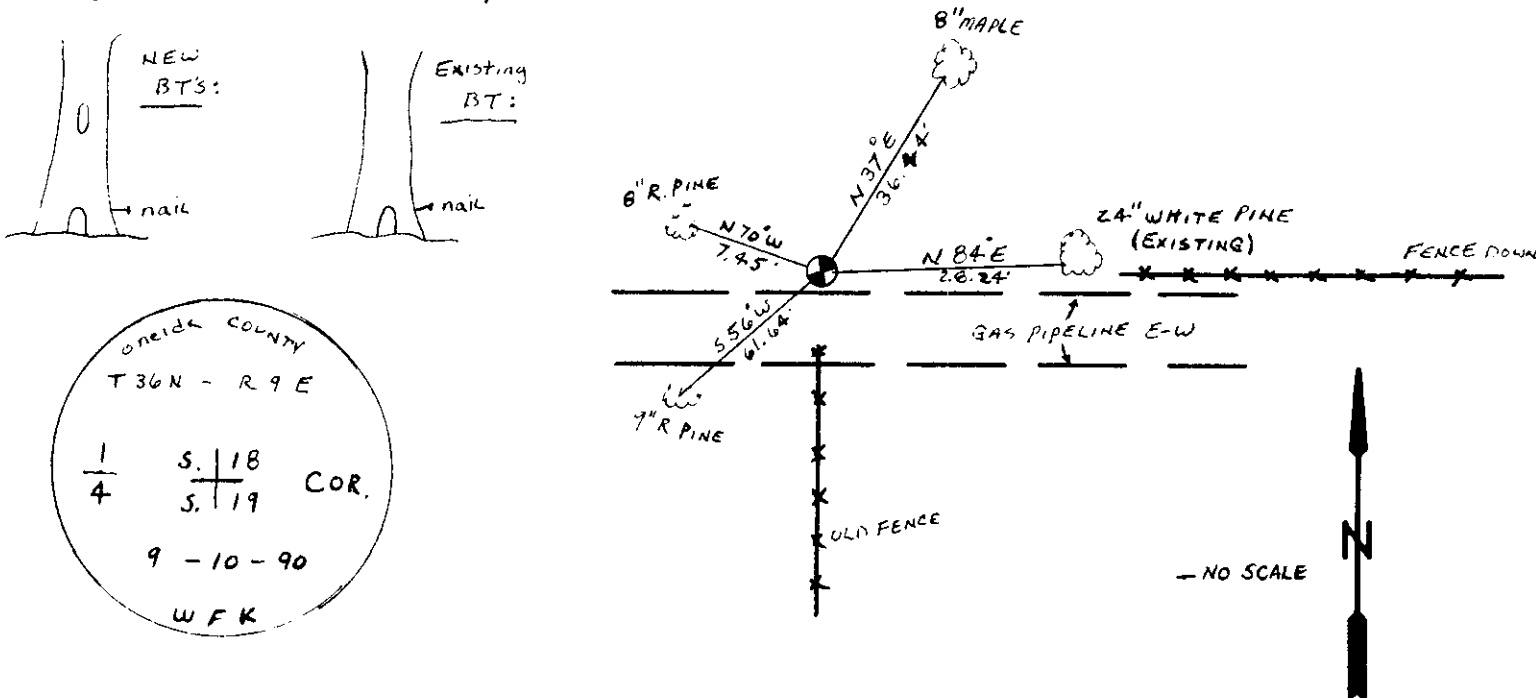
1863 - Wm. E. DAIGHERLY ESTABLISHED ORIGINAL 1/4 CORNER; BT'S: 6" ASPEN, S59°E, 61ks.
 do, N42°W, 71ks.

1894 - B. F. DORR RECOVERED CORNER & MADE NEW BT'S: 3" ASPEN, N80°E, 47 3/4 kS.
 6" R. OAK, S4 1/2°W, 52 1/2"

1953 - F. R. WINCENTSEN, ONEIDA COUNTY SURVEYOR INDICATED FINDING DORR'S POST.

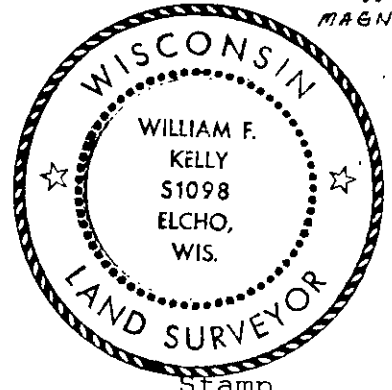
1990 - I FOUND 1/4" IRON PIPE AT INTERSECTION OF OLD FENCE LINE RUNNING SOUTH & EAST. 60 FEET OF FENCE SOUTH OF IRON PIPE IS DOWN DUE TO GAS PIPELINE CONSTRUCTION. FENCE LINE RUNNING EAST IS DOWN BUT IS STILL EVIDENT. ALSO FOUND OLD SCRIBE IN 24" WHITE PINE BASE, BUT IT HAS NO RECORD. I REPLACED IRON PIPE WITH 3" ALUMINUM ONEIDA COUNTY MONUMENT & MADE 3 NEW BT'S.

(c) (d) (e) Plan view of corner with ties to at least 4 witness monuments. If in disagreement with previously established corner, show the distances between the two corners and also indicate the ties to the disputed corner.



(i) WILLIAM F. KELLY
 (type or print name) certify that the corner location on this record was determined by me or under my direction and control and that this U.S. Public Land Survey Monument Record is correct and complete to the best of my knowledge and belief.

William F. Kelly 10-30-90
 Signature Date



Index No. N-3

3609180020