

U.S. PUBLIC LAND SURVEY MONUMENT RECORD

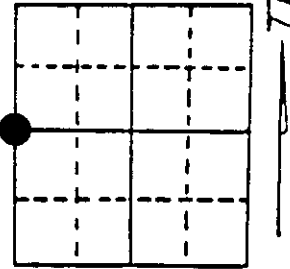
Note: This form is intended and designed to fulfill all requirements of Wisconsin Administrative Code, Chapter A-E 7.08 U.S. Public Land Survey Monument Record (3) (a) (b) (c) (d) (e) (f) (g) (h) (i). An additional sheet may be added if necessary to conform with said requirements.

(a) Corner location: Township 36 North

Range 9 East ~~West~~

Town/City/Village Pelican

County Oneida



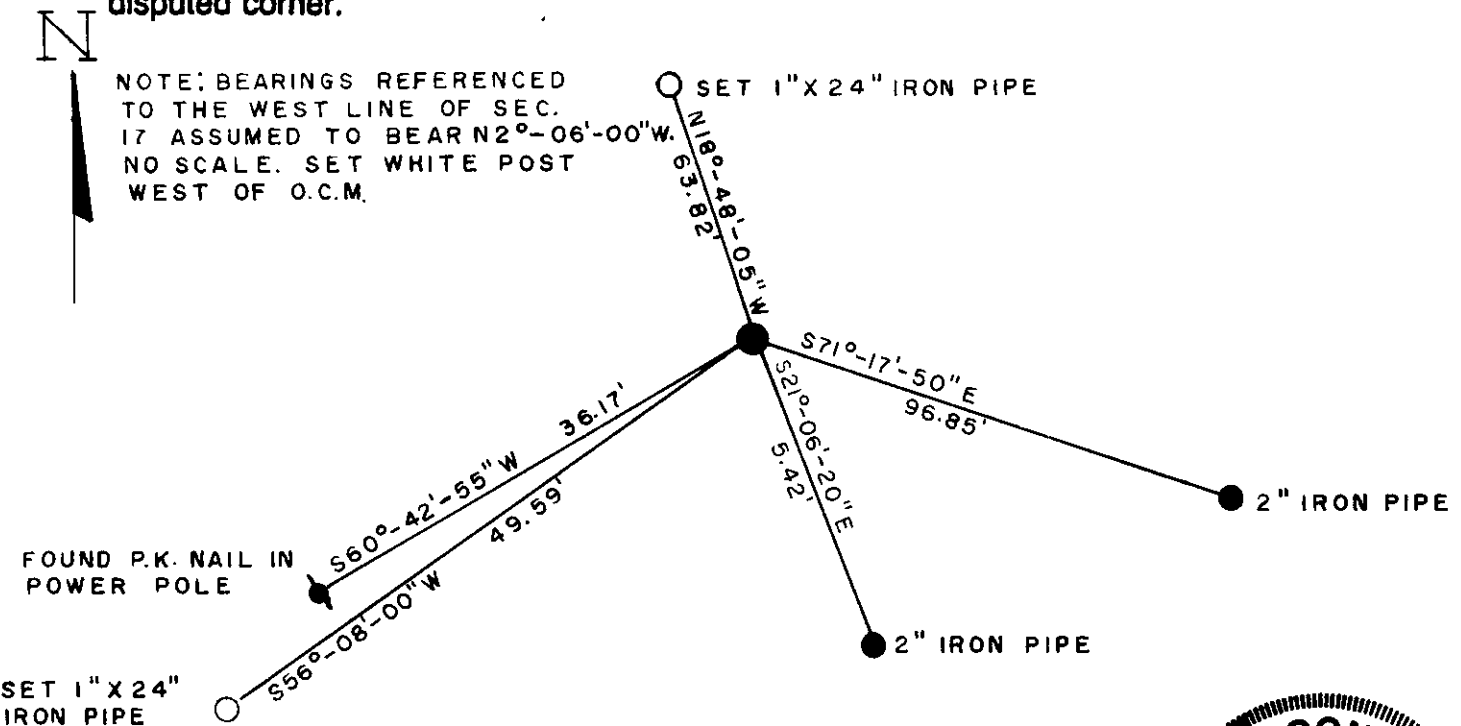
Section 17

(b) (f) (g) (h) Description of monument found at this corner and if it was accepted, state all evidence (material, testimonial, occupational, plats, records, other monuments) used as a basis for accepting. If not accepted or if nothing was found, state evidence used as basis for establishing location. If reestablished through lost corner proportionate methods, indicate all monuments, distances and directions used to establish. Indicate type of monument found or set and sign post.

1863-William E. Daugherty set post 7" Sugar Maple S 37° W, 26 links 15" Birch N 60° E, 22 links
 1968-W. Cameron set iron pipe Power Pole S 67° W, 36.1'
 1971-Cameron found iron pipe in place Power Pole S 67° W, 36.1'
 1992-William E. Bandow found iron pipe and witnessed as shown below. Iron pipe replaced with Oneida County Monument.

(See Back for Details)

(c) (d) (e) Plan view of corner with ties to at least 4 witness monuments. If in disagreement with previously established corner, show the distances between the two corners and also indicate the ties to the disputed corner.



(i) I, William E. Bandow
 (type or print name) certify that the corner location on this record was determined by me or under my direction and control and that this U.S. Public Land Survey Monument Record is correct and complete to the best of my knowledge and belief.

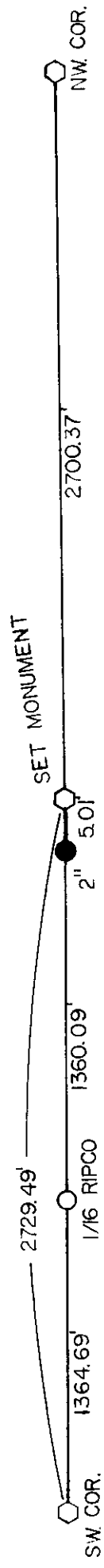
William E. Bandow 12-29-93
 Signature Date



Index No. L-5

3609182000

Stamp

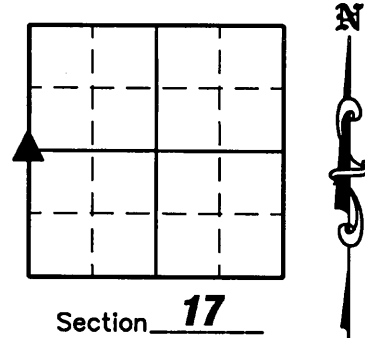


REGISTER OF DEEDS OFFICE
ONEIDA COUNTY, WIS.
FILED
JAN 1 1994
At _____ O'Clock _____
THOMAS H. LEIGHTON
REGISTER OF DEEDS

U.S. PUBLIC LAND SURVEY MONUMENT RECORD

NOTE: This form is intended and designed to fulfill all requirements of Wisconsin Administrative Code, Chapter A-E 7 .08 U.S. Public Land Survey Monument Record (3)(a)(b)(c)(d)(e)(f)(g)(h)(i). An additional sheet may be added if necessary to conform with said requirements.

(a) Corner location: Township 36 North
 Range 9 East
 Town of Pelican
 County of Oneida



(b)(f)(g)(h) Description of monument found at this corner and if it was accepted, state all evidence (material, testimonial, occupation, plats, records, other monuments) used as a basis for accepting. If not accepted or if nothing was found, state evidence used as a basis for establishing location. If reestablished through lost corner proportionate methods, indicate all monuments, distances and directions used to establish. Indicate type of monument found or set and sign post.

1863 – William Daugherty established this corner and set wood post with BT's: 7" Sugar Maple, S37°W, 26 links; 15" Birch, N60°E, 22 links.

1968 – Cameron set iron pipe – power pole, S67°W, 36.1'

1971 – Cameron found iron pipe in place along with power pole, S67°W, 36.1'

1992 – William E. Bandow found iron pipe and replaced it with an Oneida County Aluminum Monument and set new witness corners. They also found a 2" iron pipe S21°06'20"E, 5.42.


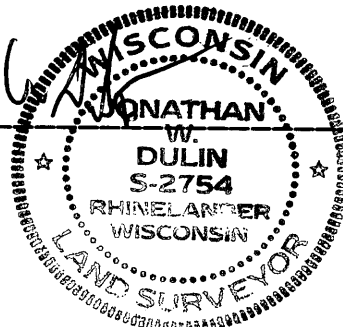
July 10, 2008 – Due to road construction Nicolet Surveyors, Inc. was contacted by the Oneida County Land Information Office to preserve the location of this survey marker. Jonathan W. Dulin found a P.K. nail 29' West of the centerline of County Highway "G" and 26' South of the centerline of College Drive along with 3 witness monument. We witnessed the corner as shown below.

November 7, 2008 – After road construction was complete we visited corner, checked the ties and found that the P.K. nail was not disturbed.

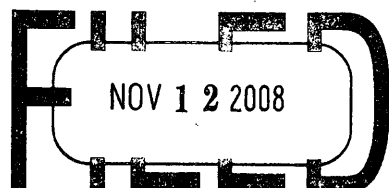
(c)(d)(e) Plan view of corner with ties to at least 4 witness monuments. If in disagreement with previously established corner, show the distances between the two corners and also indicate the ties to the disputed corner.

See Sheet 2 hereof.

(i) I, Jonathan W. Dulin, certify that the corner location on this record was determined by me under my direction and control and that this U.S. Public Land Survey Monument is correct and complete to the best of my knowledge and belief.


 Signature _____

 Date 11/7/08

REGISTER OF DEEDS OFFICE
ONEIDA COUNTY, WIS.



At _____ O'Clock _____ M
 THOMAS H. LEIGHTON
 REGISTER OF DEEDS

Sheet 1 of 2

3609182000

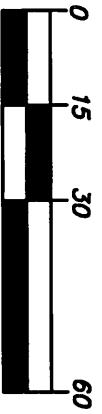
Index No. L-5

U.S. PUBLIC LAND SURVEY MONUMENT RECORD



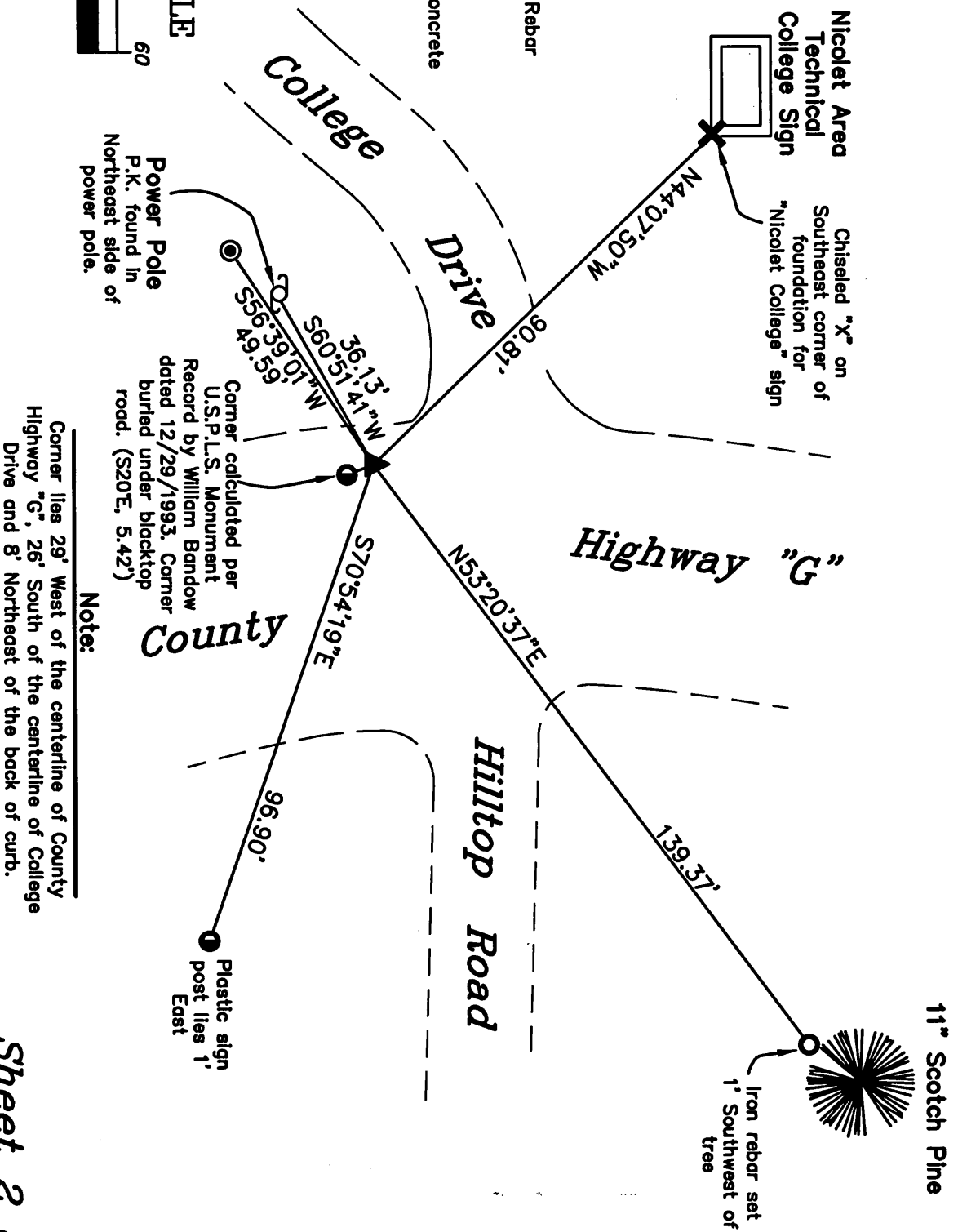
Legend

- ▲ Found P.K. Nail
- Found 1" Iron Pipe
- Set 3/4" x 24" Iron Rebar w/Yellow Ref Cap.
- Found 2" Iron Pipe
- ✕ Set Chiseled "X" in Concrete
- ⚡ Power Pole



GRAPHIC SCALE

(IN FEET)
1 Inch = 30 ft.



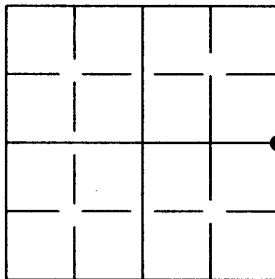
U.S. PUBLIC LAND SURVEY MONUMENT RECORD

Note: This form is intended and designed to fulfill all requirements of the Wisconsin Administrative Code, Chapter A-E 7.08 U.S. Public Land Monument Record (3)(a)(b)(c)(d)(e)(f)(g)(h)(i). An additional sheet may be added if necessary to conform with said requirements.

(a) CORNER LOCATION: Oneida County Corner I.D. No.:

East Corner, Sec. 18
Township 36 North
Range 09 East
Town of Pelican
County of Oneida

3609182000



SECTION 18

REGISTER OF DEEDS OFFICE
ONEIDA COUNTY
FILED

JUN 4 2012

AT _____ O'CLOCK _____ M
THOMAS H. LEIGHTON
REGISTER OF DEEDS

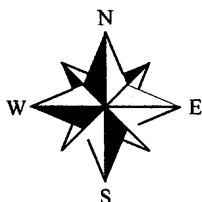
(f)(g)(h) DESCRIPTION OF MONUMENT FOUND AT THIS CORNER AND IF IT WAS ACCEPTED, STATE ALL EVIDENCE (MATERIAL, TESTIMONIAL, OCCUPATIONS, PLATS, RECORDS, OTHER MONUMENTS) USED AS A BASIS FOR ESTABLISHING LOCATION. IF NOT ACCEPTED OF IF NOTHING WAS FOUND, STATE EVIDENCE USED AS BASIS FOR ESTABLISHING LOCATION. IF REESTABLISHED THROUGH LOST CORNER PROPORTIONATE METHODS, INDICATE ALL MONUMENTS, DISTANCES AND DIRECTIONS USED TO ESTABLISH. INDICATE TYPE OF MONUMENT AND SIGN POST FOUND OR SET.

See U.S. Public Land Survey Monument Record by Jonathan W. Dulin, dated November 7, 2008 for history on this corner.

5/25/2012- Anthony R. Jones found no PK Nail as noted by Dulin. It appears the approach for College Drive from County Highway "G" has been rebuilt and the corner was never re-established. I re-set the corner based on the ties as shown on monument record filed by Dulin.

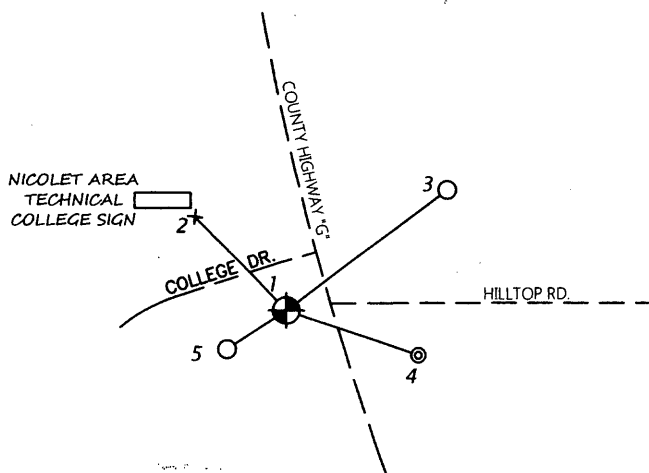
(c)(d)(e) PLAN VIEW OF CORNER WITH TIES TO AT LEAST 4 WITNESS MONUMENTS. IF IN DISAGREEMENT WITH PREVIOUSLY ESTABLISHED CORNER, SHOW THE DISTANCE BETWEEN THE TWO CORNERS AND ALSO INDICATE THE TIES TO THE DISPUTED CORNER.

NORTH BASED ON THE ONEIDA COUNTY COORDINATE SYSTEM.

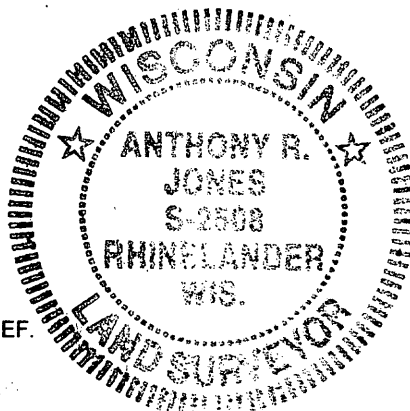


- 1: SET PK NAIL PER USPLSS MONUMENT RECORD BY DULIN, NOVEMBER 7, 2008
 - 2: FD CHISELED "X" IN CONCRETE ON SE CORNER OF NICOLET COLLEGE SIGN
N 44°20'32" W, 90.81'
 - 3: FD 1 1/4" IRON PIPE W/YELLOW R-O-W CAP
N 53°08'23" E, 139.76'
 - 4: FD 2" IRON PIPE
S 71°05'47" E, 96.91'
 - 5: FD 1 1/4" IRON PIPE
S 56°26'36" W, 49.59'
- POWER POLE W/ PK NAIL HAS BEEN REPLACED.
MONUMENT S20°E, 5.42' APPEARS TO BE STILL IN PLACE. MAGNETIC SIGNATURE AT THAT LOCATION.

All pipe monument measurements are outside diameter.



(i) I, ANTHONY R. JONES, REGISTERED LAND SURVEYOR NO. S-2508 HEREBY CERTIFY THAT THE CORNER LOCATION ON THIS RECORD WAS DETERMINED BY ME OR UNDER MY DIRECTION AND CONTROL AND THAT THIS U.S. PUBLIC LAND SURVEY MONUMENT RECORD IS CORRECT AND COMPLETE TO THE BEST OF MY KNOWLEDGE AND BELIEF.



SIGNATURE

DATE