

# U.S. PUBLIC LAND SURVEY MONUMENT RECORD

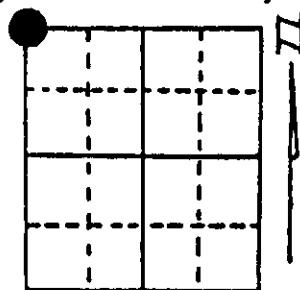
Note: This form is intended and designed to fulfill all requirements of Wisconsin Administrative Code, Chapter A-E 5.02, U.S. Public Land Survey Monument Record (3) (a) (b) (c) (d) (e) (f) (g) (h) (i). An additional sheet may be added if necessary to conform with said requirements.

(a) Corner location: Township 36 North

Range 9 East

Town/City/Village Pelican

County Oneida



Section 29

(b) (f) (g) (h) Description of monument found at this corner and if it was accepted, state all evidence (material, testimonial, occupational, plats, records, other monuments) used as a basis for accepting. If not accepted or if nothing was found, state evidence used as basis for establishing location. If reestablished through lost corner proportionate methods, indicate all monuments, distances and directions used to establish.

-1863 Daugherty set corner Post Birch 10 S 4 E 85 lks, Birch 10 N 2 W 714 lks.

-1894 Dorr found NW corner Section 29 Y. Pine stake with stones around it.

-1901 Vaughan was at corner.

-1953 F.R. Wincentzen iron pin in center of intersecting roads.

-1988 W. E. Bandow found axle shaft and set NW corner 33' N in intersection of Town Roads. Referenced as shown below. Survey marker Post set 33' South alongside axle shaft.

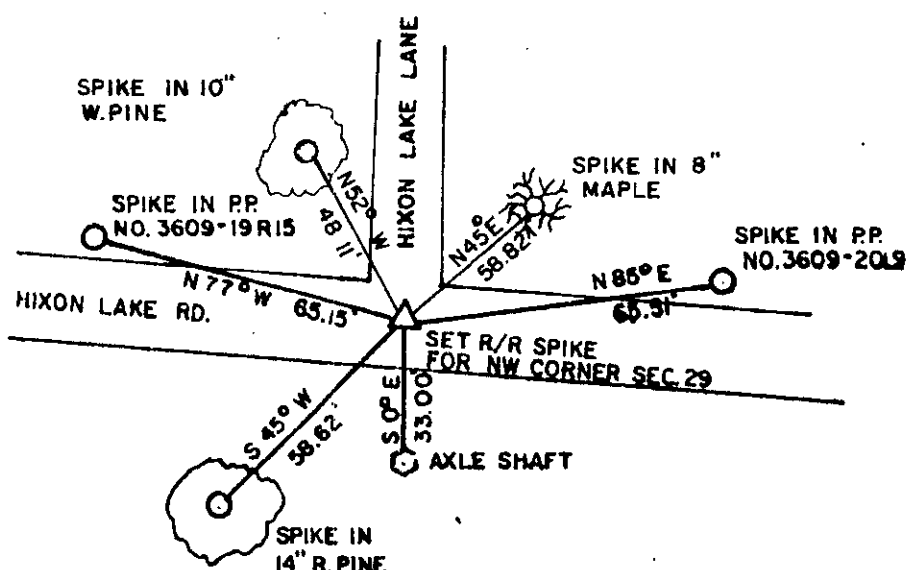
(c) (d) (e) Plan view of corner with ties to at least 4 witness monuments. If in disagreement with previously established corner, show the distances between the two corners and also indicate the ties to the disputed corner.

--- MAGNETIC BEARINGS TAKEN WITH HANDHELD COMPASS

--- DISTANCES MEASURED TO 6" SPIKE

--- NO SCALE

N



(i) I, William E. Bandow

(type or print name) certify that the corner location on this record was determined by me or under my direction and control and that this U.S. Public Land Survey Monument Record is correct and complete to the best of my knowledge and belief.

*William E. Bandow* 11-30-88

Signature

Date



Index No. R-5

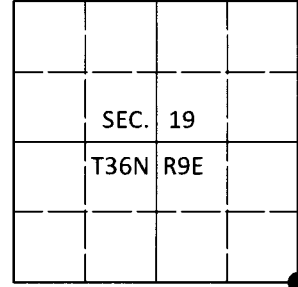
3609190000

# U.S. PUBLIC LAND SURVEY MONUMENT RECORD

Note: This form is intended and designed to fulfill all requirements of Wisconsin Administrative Code, Chapter A-E 7.08 U.S. Public Land Survey Monument Record (3)(a-i).

(a) CORNER LOCATION  
 Cor. of Secs. 19, 20, 29 & 30  
 Township 36 North  
 Range 9 East of the 4th P.M.  
 Town of Pelican  
 County of Oneida

WISCRS - Oneida County  
 N: 145,531.43 USft  
 E: 264,843.61 USft  
 Datum: NAD 83(2011)  
 GNSS Method: RTN - Direct  
 GNSS Control: WISCORS VRS



(b) HISTORY OF ORIGINAL CORNER ESTABLISHMENT

Original Surveyor: \_\_\_\_\_ Original Accessories: \_\_\_\_\_  
 Date of Survey Commenced: \_\_\_\_\_ See previous monument record(s)  
 Completed: \_\_\_\_\_

(b)(f)(g)(h) Description of monument found at this corner and if it was accepted, state all evidence (material, testimonial, occupational, plats, records, other monuments) used as a basis for accepting. If not accepted or if nothing was found, state evidence used as basis for establishing location. If re-established through lost corner proportionate methods, indicate all monuments, distances and directions used to establish. Indicate type of monument and sign post found or set.

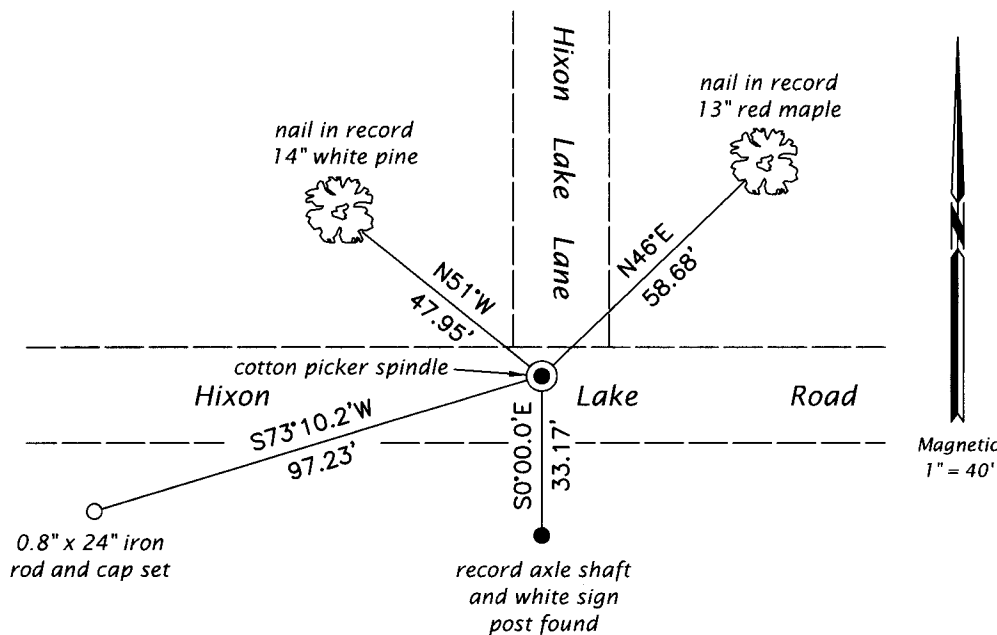
*This is a perpetuation of the following monument record(s) that comprise a complete history of the corner:*

*Nov. 3, 1988: USPLS Monument Record No. 3609190000 by William E. Bandow, PLS*

*Oct. 23, 2019: In May, I found and accepted the record monument, a railroad spike 4 feet North of the pavement centerline. From the railroad spike, a nail of unknown origin was found bearing S41°W, 1.84 ft. In the new pavement, I set a cotton picker spindle at the location of the record railroad spike. I found or established accessories as shown below.*

*The coordinate value shown has been verified by at least one of the following methods: 1) comparison to a previously GPS determined published value; 2) the value is the average of two or more GPS observations at a markedly different time; 3) one or more distances were measured back to the GPS observed corner from temporary GPS observed offset locations.*

(c)(d)(e) Plan view of corner with ties to at least 4 witness monuments. If in disagreement with previously established corner, show the distances between the two corners and also indicate the ties to the disputed.



REGISTER OF DEEDS OFFICE  
 ONEIDA COUNTY  
 FILED

DEC 23 2019

KYLE J. FRANSON  
 REGISTER OF DEEDS

(i) I, Jeffrey W. Austin, Professional Land Surveyor No. S-1885, hereby certify that the corner location on this record was determined by me or under my direction and control and that this U.S. Public Land Survey Monument Record is correct and complete to the best of my knowledge and belief.

*[Handwritten Signature]*  
 Signature

3 DEC 2019  
 Date