

CERTIFIED LAND CORNER RESTORATION

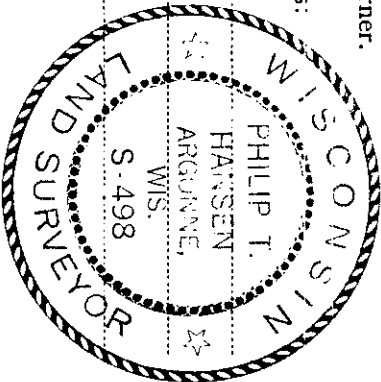
Index No. **P-9**

State of Wisconsin }
 County of Oneida } ss.

I Philip T. Hansen, do hereby certify that on the 9th day of April, 1976, I found evidence of the quarter corner of section 21 and 20 Township 36 North, Range 9 East, Fourth Principal Meridian, as described hereon; and that from this evidence I established a new monument and accessories as described hereon to perpetuate the original location of this corner.

Resident witnesses:

Glen Barker
 Jim Claffin
 Herb Wagoner

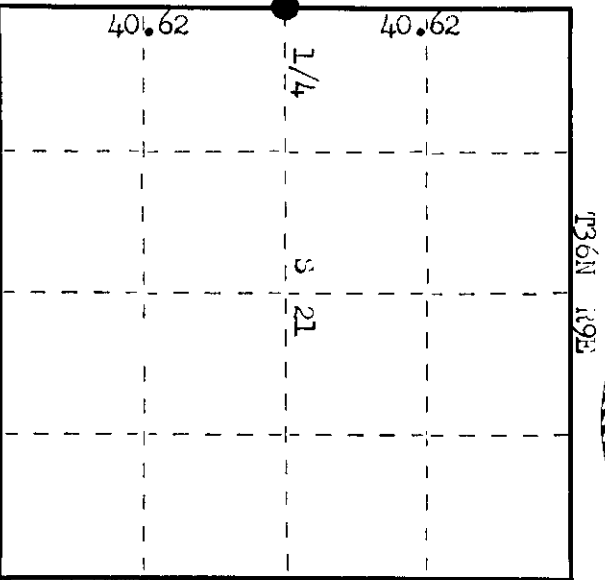


History of original corner establishment: Original corner established by Wm. S. Dougherty, Deputy Surveyor, in 1863, from which Hendlock 10" bears S 61° E 25 lks, and Hendlock 10" bears S 34° W 24 lks. Corner recovered and restored by Ripco Surveyors, Goddard and crew, in 1961. Set a 2" iron spike in intersection of centerline of River Bend Road and Germand Road. Set a 2" iron pipe with aluminum cap for witness corner, 70 lks N 45° W from RR spike. Marked WBO - Telephone pole # 132-544 E 57 lks and #3609 N 42° W 63 lks.

Description of corner evidence found: recovered RR spike in centerline of River Bend Road and Germand Road. Spike has been bent. Recovered a 2" iron pipe with aluminum cap, stumped. Pipe projects 18" above ground, recovered in good condition. WBO - Telephone line and poles have been removed.

T36N R9E
 1/4
 S 20 + S 21
 Cor 70 lks.
 S 45° E

Description of monument and accessories I established to perpetuate the original location of this corner. As RR spike was bent, it was removed and replaced with 1" x 18" iron pipe driven below surface of blacktop. Witness corner being in perfect condition, was left in place. WBO - HI line pole #3609 20 E 8 N 44° W 626 lks. HI line pole #3609 21 W 2 N 13° E 184 lks. SW corner of Pelican Lake Town Hall N 38° E 64.1 lks. Distance measured from true corner to center of power poles. W.C. painted blue.



○ = Corner monument restored.

Dated at Rainelanders, Wis., this 20th day of July, 1976.

Signature *Philip T. Hansen* Title Registered Land Surveyor Registration No. S-498
 (County Surveyor, Registered Land Surveyor, or other duly authorized official)

Office of Register of Deeds, County of Oneida, 3rd day of July, 1976. I hereby certify that the within instrument was filed in this office for record on the 3rd day of July, 1976 at 1:00 o'clock P.M.

Doree Savage-Fuehr
 (Register of Deeds)

By _____ Deputy

3609202000

U.S. PUBLIC LAND SURVEY MONUMENT RECORD

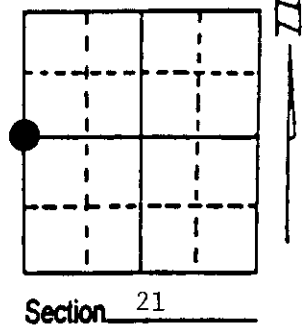
Note: This form is intended and designed to fulfill all requirements of Wisconsin Administrative Code, Chapter A-E 7.08 U.S. Public Land Survey Monument Record (3) (a) (b) (c) (d) (e) (f) (g) (h) (i). An additional sheet may be added if necessary to conform with said requirements.

(a) Corner location: Township 36 North

Range 9 East/West

Town/City/Village PELICAN

County ONEIDA



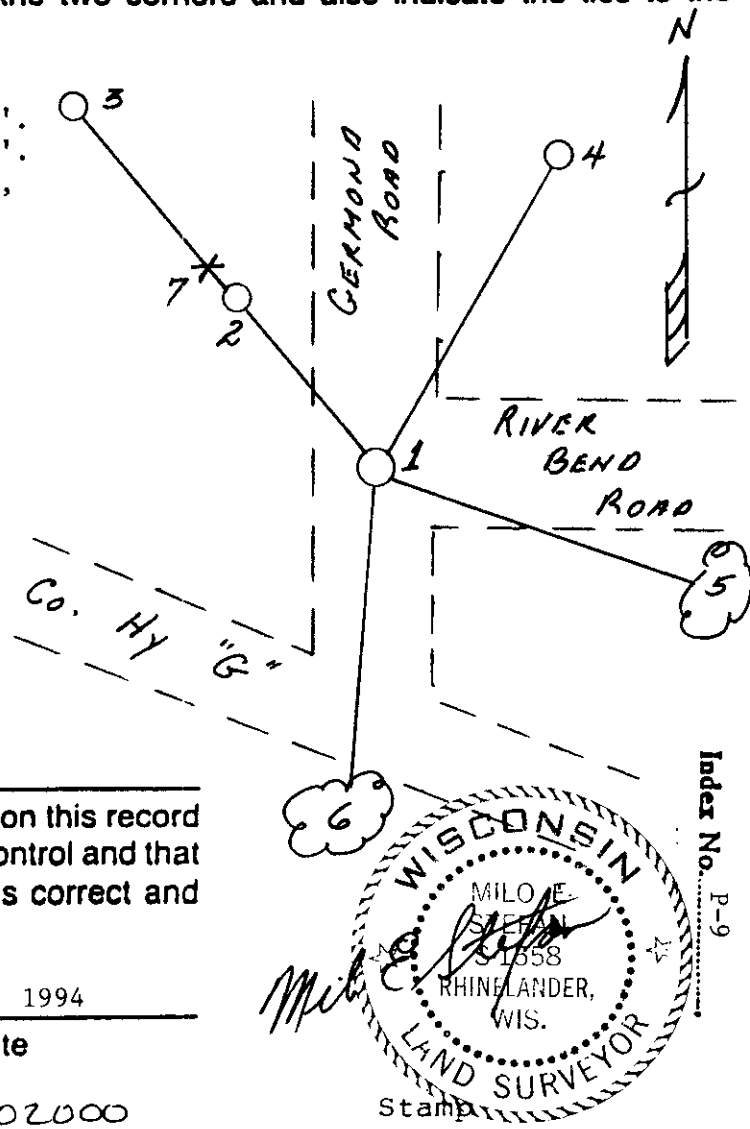
(b) (f) (g) (h) Description of monument found at this corner and if it was accepted, state all evidence (material, testimonial, occupational, plats, records, other monuments) used as a basis for accepting. If not accepted or if nothing was found, state evidence used as basis for establishing location. If reestablished through lost corner proportionate methods, indicate all monuments, distances and directions used to establish. Indicate type of monument found or set and sign post.

- 6/11/1993 - Found 5/8" re-rod in road surface/reference monument. We tied off corner position so it would not be lost during road resurfacing.
- 4/19/1994 - We placed a railroad spike for corner and set an additional reference monument/plastic sign post.

(c) (d) (e) Plan view of corner with ties to at least 4 witness monuments. If in disagreement with previously established corner, show the distances between the two corners and also indicate the ties to the disputed corner.

- 1) Railroad spike.
- 2) 2" x 24" high aluminum cap, N45°W, 32.34'.
- 3) 2" x 30" aluminum monument, N45°W, 71.24'.
- 4) 3/4" x 30" re-rod in front of power pole, N13°E, 119.08'.
- 5) 8" Red Pine, S60°E, 107.21'.
- 6) 8" Red Pine, S2°W, 187.35'.
- 7) Plastic sign post, N45°W, 32.4'.

Distances to nails in side of BTs.
Stump blazes scribed "BT".



(i) I, Milo E. Stefan
(type or print name) certify that the corner location on this record was determined by me or under my direction and control and that this U.S. Public Land Survey Monument Record is correct and complete to the best of my knowledge and belief.

Milo E. Stefan May 9, 1994
Signature Date

3609202000

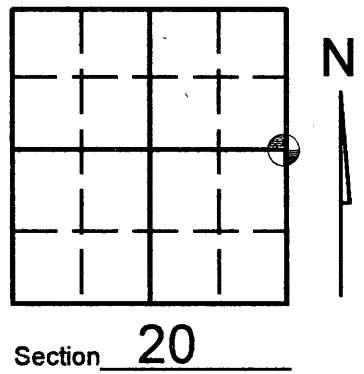
Index No. P-9

Stamp

U.S. PUBLIC LAND SURVEY MONUMENT RECORD

Note: This form is intended and designed to fulfill all requirements of Wisconsin Administrative Code, Chapter A-E 7.08 U.S. Public Land Survey Monument Record (3)(a)(b)(c)(d)(e)(f)(g)(h)(i). An additional sheet may be added if necessary to conform with said requirements.

(a) Corner location: Township 36 North
 Range 09 (East) West
 Town/City/Village PELICAN
 County ONEIDA

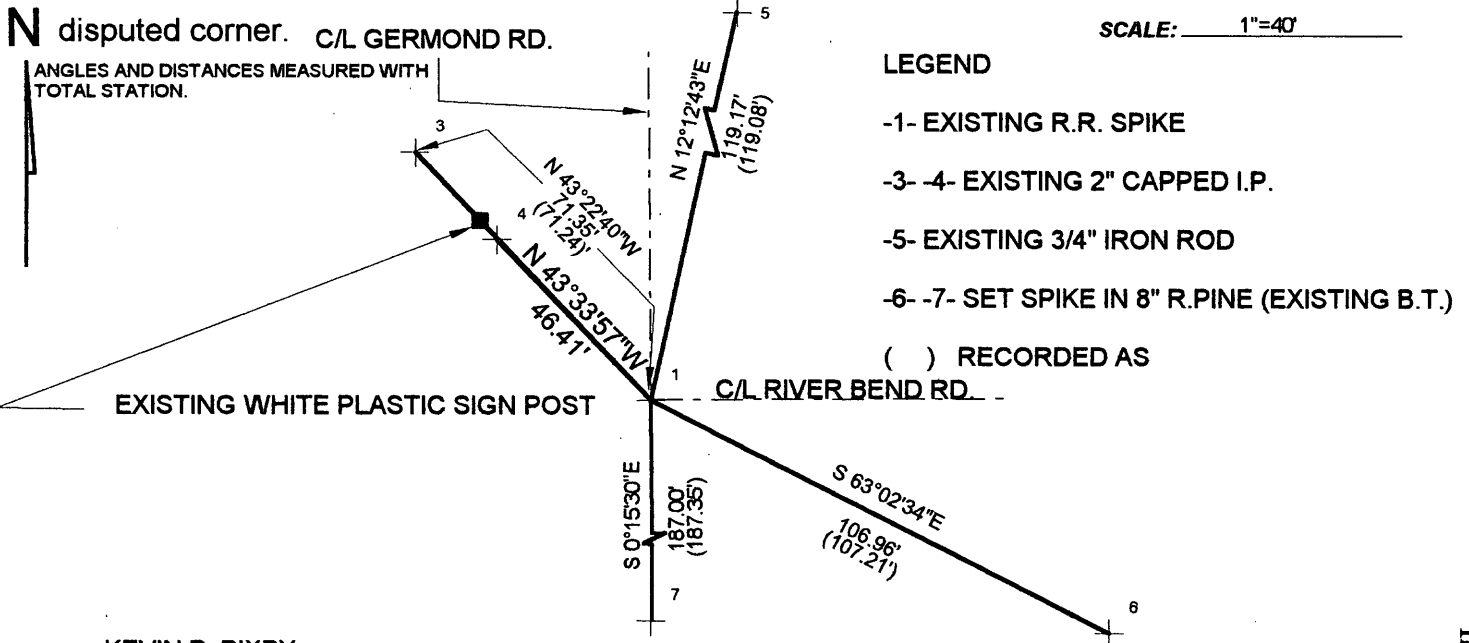


(b) (f) (g) (h) Description of monument found at this corner and if it was accepted, state all evidence (material, testimonial, occupational, plats, records, other monuments) used as a basis for accepting. If not accepted or if nothing was found, state evidence used as basis for establishing location. If reestablished through lost corner proportionate methods, indicate all monuments, distances and directions used to establish. Indicate type of monument found or set and sign post.

SEE CORNER RESTORATION FORM P-9 FOR HISTORY OF SAID CORNER.

-FEBRUARY 05, 2005- Kevin Bixby found corner and ties undisturbed after construction of County Hwy. "G". (SEE DRAWING BELOW.)

(c) (d) (e) Plan view of corner with ties to at least 4 witness monuments. If in disagreement with previously established corner, show the distances between the two corners and also indicate the ties to the



(i) I, KEVIN P. BIXBY
 (type or print name) certify that the corner location on this record was determined by me or under my direction and control and that this U.S. Public Land Survey Monument Record is correct and complete to the best of my knowledge and belief.

Kevin P. Bixby
 Signature 02/05/05
Date



Stamp
 36 09 20 20 00

Index No. P 9

JAN 25 2013

AT _____ O'CLOCK _____ M
KYLE J. FRANSON
REGISTER OF DEEDS

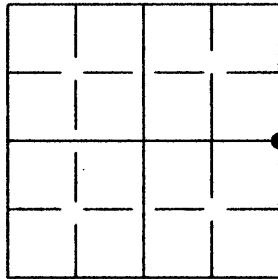
U.S. PUBLIC LAND SURVEY MONUMENT RECORD

Note: This form is intended and designed to fulfill all requirements of the Wisconsin Administrative Code, Chapter A-E 7.08 U.S. Public Land Monument Record (3)(a)(b)(c)(d)(e)(f)(g)(h)(i). An additional sheet may be added if necessary to conform with said requirements.

(a) CORNER LOCATION: Oneida County Corner I.D. No.:

East 1/4 Corner, Sec. 20
Township 36 North
Range 9 East
Town of Pelican
County of Oneida

3609202000



SECTION 20



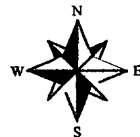
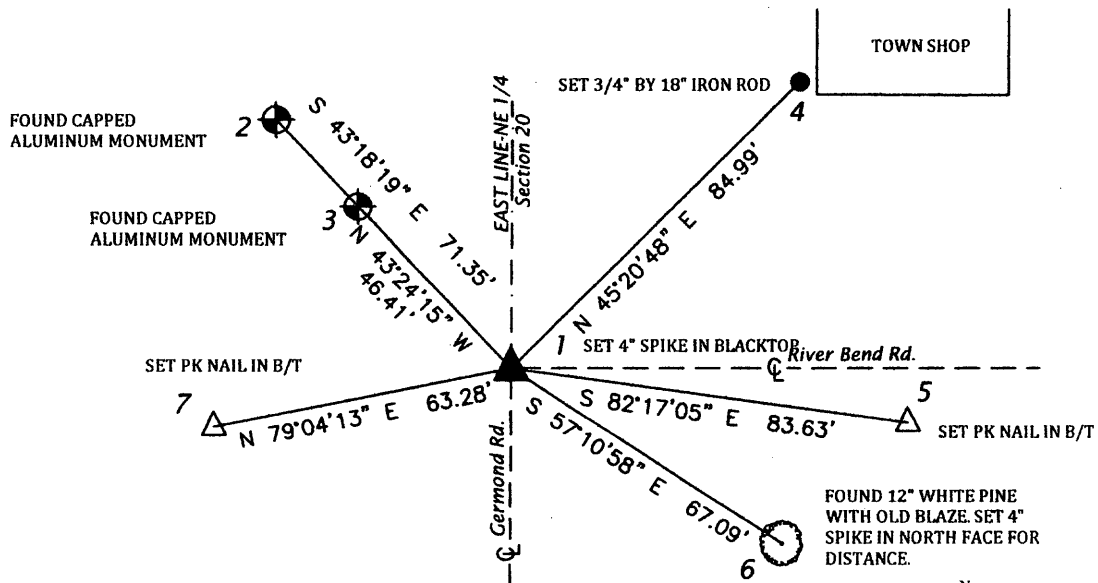
(f)(g)(h) DESCRIPTION OF MONUMENT FOUND AT THIS CORNER AND IF IT WAS ACCEPTED, STATE ALL EVIDENCE (MATERIAL, TESTIMONIAL, OCCUPATIONS, PLATS, RECORDS, OTHER MONUMENTS) USED AS A BASIS FOR ESTABLISHING LOCATION. IF NOT ACCEPTED OR IF NOTHING WAS FOUND, STATE EVIDENCE USED AS BASIS FOR ESTABLISHING LOCATION. IF REESTABLISHED THROUGH LOST CORNER PROPORTIONATE METHODS, INDICATE ALL MONUMENTS, DISTANCES AND DIRECTIONS USED TO ESTABLISH. INDICATE TYPE OF MONUMENT AND SIGN POST FOUND OR SET.

FEBRUARY 5, 2005 - U.S. PUBLIC LAND SURVEY MONUMENT RECORD BY KEVIN BIXBY CALLS MONUMENT AS EXISTING RAILROAD SPIKE. SEE RECORD FOR PREVIOUS DETAILS AND ADDITIONAL TIES.

APRIL 2, 2012- PRE-CONSTRUCTION REPORT FILED BY ANTHONY JONES. FOUND EAST 1/4 CORNER, SEC. 20-36-09 AS DESCRIBED. 3/4" IRON PIPE, N 12°12'43" E, LOST TO PLOWING. SET NEW TIE AS SHOWN BELOW. FOUND 12" WHITE PINE WITH OLD BLAZE AS SHOWN BELOW. SET 4" SPIKE IN NORTH FACE FOR DISTANCE AND BEARING IS TO THE BLAZE IN THE CENTER. ALL OTHER TIES AS SHOWN BELOW.

SEPTEMBER 2, 2012- RE-CONSTRUCTION OF GERMOND ROAD COMPLETE. SET 4" BERNTSEN SPIKE AT CORNER PER TIES SHOWN ON PRE-CONSTRUCTION REPORT.

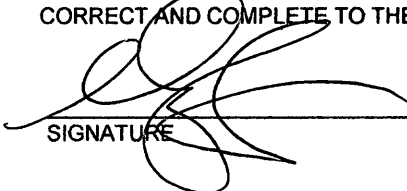
(c)(d)(e) PLAN VIEW OF CORNER WITH TIES TO AT LEAST 4 WITNESS MONUMENTS. IF IN DISAGREEMENT WITH PREVIOUSLY ESTABLISHED CORNER, SHOW THE DISTANCE BETWEEN THE TWO CORNERS AND ALSO INDICATE THE TIES TO THE DISPUTED CORNER.



NORTH BASED ON THE ONEIDA COUNTY COORDINATE SYSTEM



(i) I, ANTHONY R. JONES, REGISTERED LAND SURVEYOR NO. S-2508 HEREBY CERTIFY THAT THE CORNER LOCATION ON THIS RECORD WAS DETERMINED BY ME OR UNDER MY DIRECTION AND CONTROL AND THAT THIS U.S. PUBLIC LAND SURVEY MONUMENT RECORD IS CORRECT AND COMPLETE TO THE BEST OF MY KNOWLEDGE AND BELIEF.


SIGNATURE

9/2/2012
DATE

INDEX NO. P-9