

CERTIFIED LAND CORNER RESTORATION

Index No. 0-9

State of Wisconsin } ss.
County of Oneida

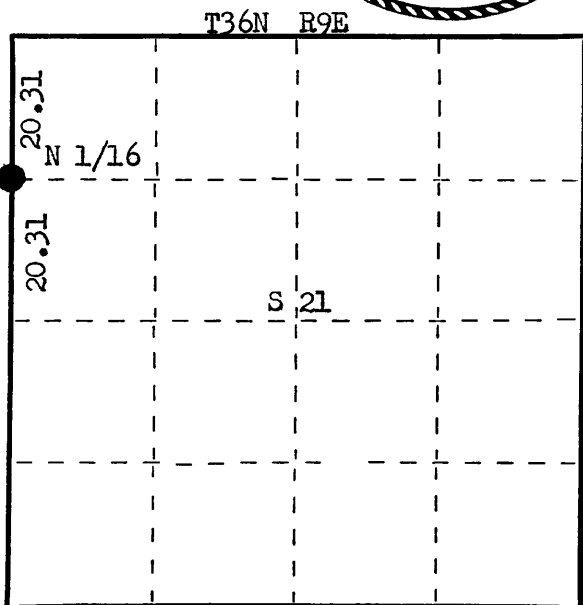
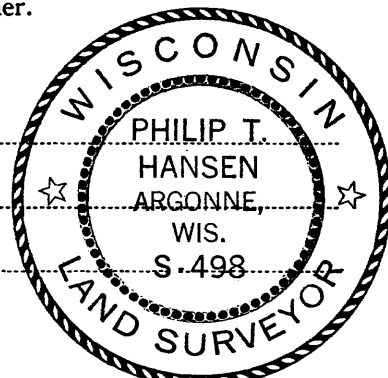
I Philip T. Hansen, do hereby certify that on the 12th day of April, 1976, I found evidence of the N 1/16 corner of Section 20 - 21 Township 36, North, Range 9 East, Fourth Principal Meridian, as described hereon; and that from this evidence I established a new monument and accessories as described hereon to perpetuate the original location of this corner.

Resident witnesses:

Glen Barker

Jim Claflin

Herb Wagoner



○ = Corner monument restored.

History of original corner establishment: Corner established by Ripco Surveyors, Goddard and crew, in 1961.

From recovered and restored NW Corner, ran 179° 05' magnetic along highway to W 1/4 corner previously set at 40.62 chains. Set N 1/16 at 20.31 chains, equidistant. Set iron pipe in highway for N 1/16 Corner and a 1" iron pipe with aluminum cap for reference corner, 35 lks East.

Marked BTs - Birch 5" N 64° E 55 lks.
Birch 5" S 66° E 51½ lks.

Description of corner evidence found:

Unable to recover pin in road, which had been destroyed by construction.

Recovered 1" iron pipe with brass cap stamped.

Recovered W. Birch 5" (9") S 66° E 51.5 lks, scribed N 1/16 BT.

W. Birch 5" (8") N 64° E 55 lks, scribed N 1/16 BT.

N 1/16
S20 S21

Cor. 34.5 lks
W

Description of monument and accessories I established to perpetuate the original location of this corner.

Determined Location of Corner from Witness Corner and OBTs. Stamping on cap indicates 34.5 lks instead of 35 lks as indicated in notes.

Set RR spike for corner, 2" below surface of black top - Witness Corner did not have a cross bar, so it was removed and bar installed and monument reset.

Added T36N R9E to stamping on aluminum cap.

NBO - Hi Line Pole N 9° W 228.4 lks.

Hi Line Pole #3609 - 20 E 5 S 6° W 312.7 lks.

Distance from true corner to center of poles.

Dated at Rhineland, Wis., this 20th day of July, 1976

Signature Philip T. Hansen Title Registered Land Surveyor Registration No. S-498
(County Surveyor, Registered Land Surveyor, or other duly authorized official)

Office of Register of Deeds, County of Oneida, I hereby certify that the within instrument was filed in this office for record on the 23rd day of July, 1976 at 1:00 o'clock P. M.

Doris Verage Kuehn
(Register of Deeds)

By _____ Deputy

3609203000

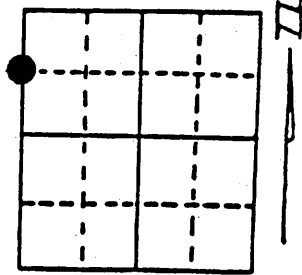
U.S. PUBLIC LAND SURVEY MONUMENT RECORD

Note: This form is intended and designed to fulfill all requirements of Wisconsin Administrative Code, Chapter A-E 7.08 U.S. Public Land Survey Monument Record (3) (a) (b) (c) (d) (e) (f) (g) (h) (i). An additional sheet may be added if necessary to conform with said requirements.

(a) Corner location: Township 36 North
 Range 9 East/West

Town/City/Village PELICAN

County ONEIDA



Section 21

(b) (f) (g) (h) Description of monument found at this corner and if it was accepted, state all evidence (material, testimonial, occupational, plats, records, other monuments) used as a basis for accepting. If not accepted or if nothing was found, state evidence used as basis for establishing location. If reestablished through lost corner proportionate methods, indicate all monuments, distances and directions used to establish. Indicate type of monument found or set and sign post.

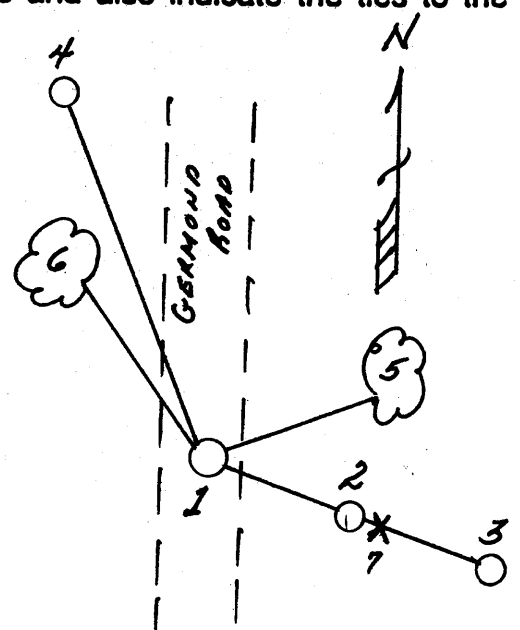
6/11/1993 - Found PK nail in road with reference monument and remains of both RIPCO BTs in place. We made new BTs and tied corner position off so it would not be lost in resurfacing of road.

4/19/1994 - We placed a railroad spike for corner, two new reference monuments and plastic sign post.

(c) (d) (e) Plan view of corner with ties to at least 4 witness monuments. If in disagreement with previously established corner, show the distances between the two corners and also indicate the ties to the disputed corner.

- 1) Railroad spike.
- 2) 1" x 24" high monument/aluminum cap, S76°E, 22.77'.
- 3) 2" x 30" aluminum monument, S76°E, 48.75'.
- 4) 3/4" x 30" re-rod in front of power pole, N20°W, 147.53'.
- 5) 8" Red Maple, N72°E, 47.74'.
- 6) 12" Red Maple, N22°W, 82.29'.
- 7) Plastic sign post, S76°E, 23.3'.

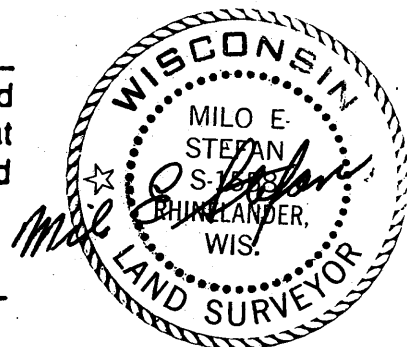
Distances to nail in side of BTs.
 Stump blazes scribed "BT".



(i) I, Milo E. Stefan
 (type or print name) certify that the corner location on this record was determined by me or under my direction and control and that this U.S. Public Land Survey Monument Record is correct and complete to the best of my knowledge and belief.

Milo E Stefan
 Signature

May 9, 1994
 Date



Index No. 0-9

Stamp

3609203000

JAN 25 2013

AT O'CLOCK M
KYLE J. FRANSON
REGISTER OF DEEDS

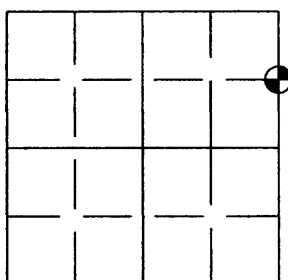
U.S. PUBLIC LAND SURVEY MONUMENT RECORD

Note: This form is intended and designed to fulfill all requirements of the Wisconsin Administrative Code, Chapter A-E 7.08 U.S. Public Land Monument Record (3)(a)(b)(c)(d)(e)(f)(g)(h)(i).
An additional sheet may be added if necessary to conform with said requirements.

(a) CORNER LOCATION: Oneida County Corner I.D. No.:

North 1/16 Corner, Sec. 20, West Line
Township 36 North
Range 9 East
Town of Pelican
County of Oneida

3609203000



SECTION 20

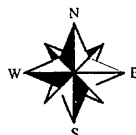
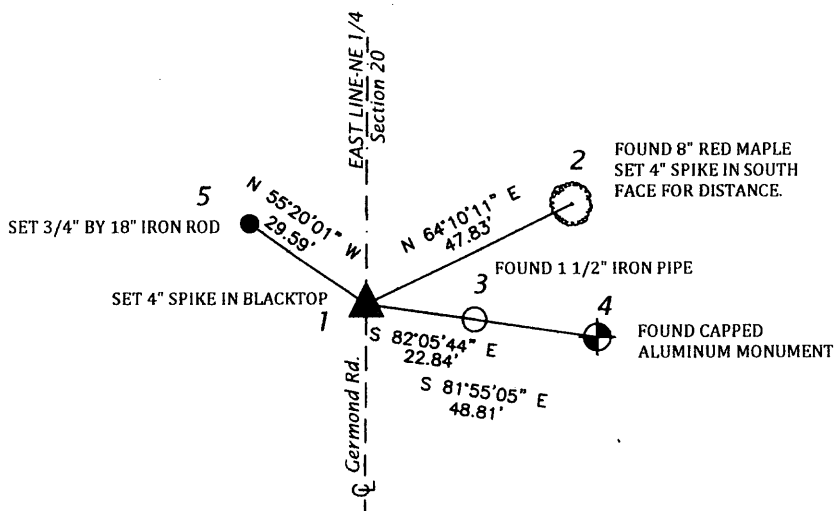
(f)(g)(h) DESCRIPTION OF MONUMENT FOUND AT THIS CORNER AND IF IT WAS ACCEPTED, STATE ALL EVIDENCE (MATERIAL, TESTIMONIAL, OCCUPATIONS, PLATS, RECORDS, OTHER MONUMENTS) USED AS A BASIS FOR ESTABLISHING LOCATION. IF NOT ACCEPTED OF IF NOTHING WAS FOUND, STATE EVIDENCE USED AS BASIS FOR ESTABLISHING LOCATION. IF REESTABLISHED THROUGH LOST CORNER PROPORTIONATE METHODS, INDICATE ALL MONUMENTS, DISTANCES AND DIRECTIONS USED TO ESTABLISH. INDICATE TYPE OF MONUMENT AND SIGN POST FOUND OR SET.

MAY 9, 1994 - U.S. PUBLIC LAND SURVEY MONUMENT RECORD BY MILO STEFAN CALLS MONUMENT AS SET RAILROAD SPIKE.

APRIL 2, 2012- PRE-CONSTRUCTION REPORT FILED BY ANTHONY JONES. FOUND N 1/16 CORNER ON EAST LINE OF S EC. 20-36-09 AS DESCRIBED. 3/4" IRON PIPE, N 20° W, 147.53' LYING ON THE GROUND. 1" BY 24" HIGH MONUMENT/ALUMINUM CAP, S 76° E, 22.77' FOUND BENT AND ON THE GROUND. SET NEW TIE AS SHOWN BELOW. SET 4" SPIKE IN SOUTH FACE OF RED OAK FOR DISTANCE AND BEARING IS TO THE BLAZE IN THE CENTER. ALL OTHER TIES AS SHOWN BELOW.

SEPTEMBER 2, 2012- RE-CONSTRUCTION OF GERMOND ROAD COMPLETE. SET 4" BERNTSEN SPIKE AT CORNER PER TIES SHOWN ON PRE-CONSTRUCTION REPORT.

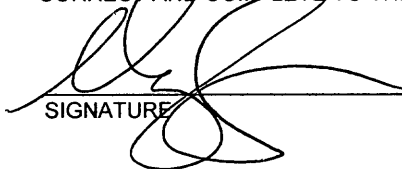
(c)(d)(e) PLAN VIEW OF CORNER WITH TIES TO AT LEAST 4 WITNESS MONUMENTS. IF IN DISAGREEMENT WITH PREVIOUSLY ESTABLISHED CORNER, SHOW THE DISTANCE BETWEEN THE TWO CORNERS AND ALSO INDICATE THE TIES TO THE DISPUTED CORNER.



NORTH BASED ON THE ONEIDA COUNTY COORDINATE SYSTEM



(i) I, ANTHONY R. JONES, REGISTERED LAND SURVEYOR NO. S-2508 HEREBY CERTIFY THAT THE CORNER LOCATION ON THIS RECORD WAS DETERMINED BY ME OR UNDER MY DIRECTION AND CONTROL AND THAT THIS U.S. PUBLIC LAND SURVEY MONUMENT RECORD IS CORRECT AND COMPLETE TO THE BEST OF MY KNOWLEDGE AND BELIEF.


SIGNATURE

9/2/2012
DATE

INDEX NO. 0-9