

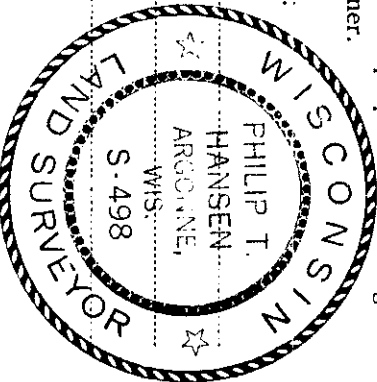
CERTIFIED LAND CORNER RESTORATION

Index No. **R-12**

State of Wisconsin }
 County of Oneida } ss.

I Phillip T. Hansen, do hereby certify that on the 12th day of April, 1976, I found evidence of the E 1/16 corner of Section 21 and 28 Township 36 North, Range 9 East, Fourth Principal Meridian, as described hereon; and that from this evidence I established a new monument and accessories as described hereon to perpetuate the original location of this corner.

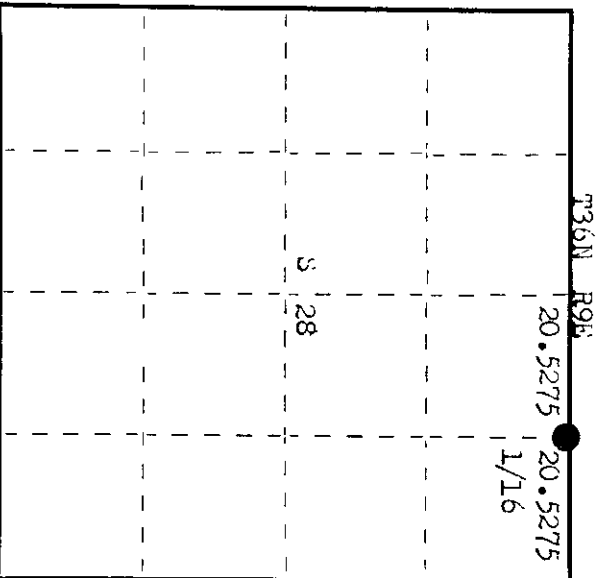
Resident witnesses:
Glen Barker
Jim Clafflin
Herb Magoner



History of original corner establishment: Corner established by Rippeo Surveyor, Goddard and crew, in 1961. Ran random line on bearing 268°00', a distance of 82.08 chains. Closed out 2.385 chains south of previous; recovered and restored in Corner sec. 20, 21, 27, 28. Established 1/4 Line on corrected line at 41.055 chains, 1.1925 chains north. Set 1/16 corner at 20.5275 chains equidistant, 59.625 lks north. Set 1/16 corner at 20.5275 chains equidistant, 59.625 lks north. Marked NBTs - Tamarack 5" S 47° W 5 1/2 lks. Tamarack 6" S 82° W 21 lks.

Description of corner evidence found: Recovered 4" Tamarack post, squared and scribed 1/16, 1/16. Also a 1" iron pipe with aluminum cap stamped. Recovered OBT - Tamarack 5" S 47° W 5.25 lks, scribed 1/16 BT. Tamarack 6" S 52° W 21 lks, scribed 1/16 BT. 1/16 521 528

Description of monument and accessories I established to perpetuate the original location of this corner. As tamarack stake was set prior to iron pipe and calls fit to the post, both were extracted from ground and iron pipe was set in its place. Drove support stakes beside it in the muck and propped wood post beside it. Monument and OBTs painted blue. No additional accessories established.



○ = Corner monument restored.

Dated at Rhineland, Wis., this 22nd day of July, 1976.

Signature Phillip T. Hansen Title Registered Land Surveyor Registration No. S-498
 (County Surveyor, Registered Land Surveyor, or other duly authorized official)

Office of Register of Deeds, County of Oneida. I hereby certify that the within instrument was filed in this office for record on the 3rd day of August, 1976 at 10:30 o'clock A. M.

George Terence Kuehn
 (Register of Deeds)

By _____ Deputy

3609210010