

# US PUBLIC LAND SURVEY MONUMENT RECORD

Per Wis. Admin. Code § A-E 7.08, a U.S. public land survey monument record shall be prepared and filed with the county survey records as part of any land survey within 60 days of setting or accepting the corner, which includes or requires the perpetuation, restoration, or use of a U.S. public land survey corner and when any of the situations in Wis. Admin. Code § A-E 7.08(1)(a), (b) or (c) arise.

**3(a) Corner Identification:**

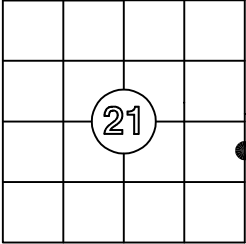
Set an Oneida County  
aluminum monument  
Meander Corner  
Section 21  
Township 36 North  
Range 9 East  
4th Principal Meridian  
Town of Pelican  
Oneida Co., WI

**Observed Coordinates:**

N: 147495.10  
E: 275672.73  
Datum: NAD83(2011)  
GNSS Control: WISCRS VRS  
GNSS Method: RTK-Direct  
Verification Method: 2

**CORNER ID:**

3609211500



**Establishment of Original Corner**

Corner Set: Wood Post  
Original Surveyor: Wm. Daugherty  
Date of Survey: July/August, 1863  
Maple 8", N 25° E, 17 lks  
Maple 10", N 50° W, 23 lks

The coordinate value has been verified by at least one of the following methods:

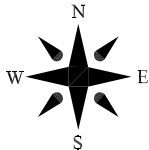
- Comparison to a previously determined GNSS determined published value;
- The value is the average of two or more GNSS observations at markedly different times;
- One or more distances were measured to the corner from offset GNSS observed locations, set and observed per No. 2 methods.

**3(b)((c)(d)(f)(g)(h)**

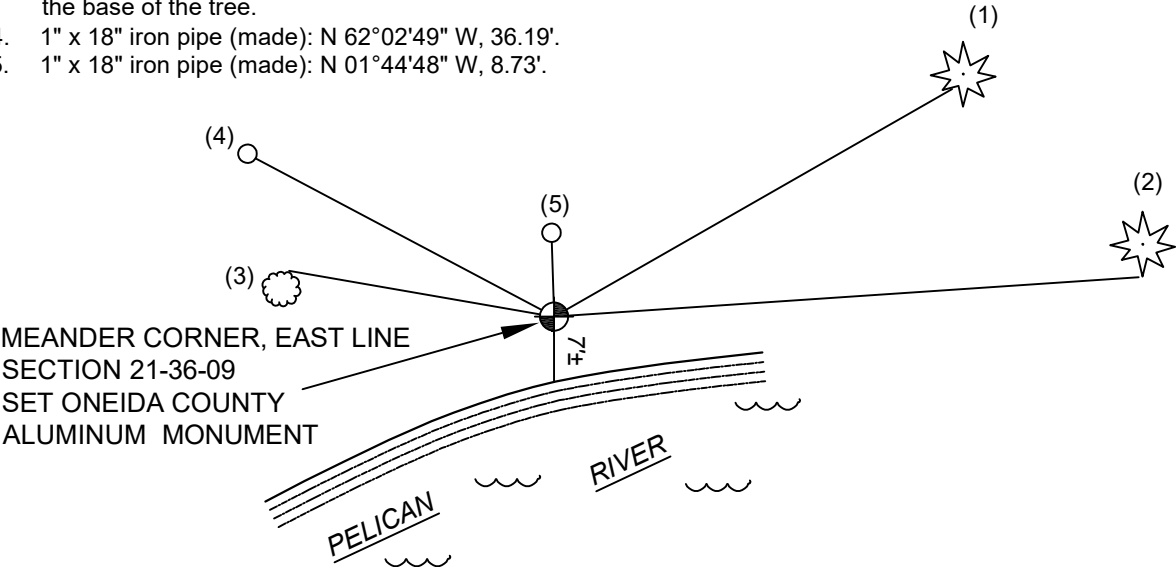
- 2/1961 - Godard and crew (RIPCO) ran south, 10.55 chains, from the E 1/4 corner of Section 21 and set an iron pipe for the meander corner, with bearing trees, Pn 22", N 58° E, 74 1/2 lks, and Pw 16", N 84° E, 93 lks.
- 12/15/1984 - Todd Loftus, S-1523, finds a 1" iron pipe.
- 6/28/2006 - Todd Loftus, S-1523, finds a 1" iron pipe.
- 5/31/2025 - I, Anthony Jones, S-2508, found the 1" iron pipe in good condition. I set a 2" x 30" Oneida County aluminum monument over the iron pipe. The monument is flush with the ground and stamped to show the location. I recovered both of the RIPCO witness trees, also in good condition. I added one additional bearing tree and two 1"x18" iron pipes. All witnesses are shown below. I set a white poly "T" post 0.5' north of the monument. The monument is 7'± north of the Pelican River.

**WITNESS MONUMENT TIES**

- 25" Norway pine (found, RIPCO): N 60° E, 47.76' (N 58° E, 74 1/2 lks). The blaze in face of the tree and scribing are visible. It is not possible to pull the tape measure from this tree horizontally to the monument, as it is several feet higher than the monument. The horizontal distance was taken with a direct reading using my direct-reading total station. The slope distance from the blaze to the monument is 48.51'.
- 29" white pine (found, RIPCO): N 86° E, 61.13' (N 84° E, 93 lks). Lower blaze has grown shut. I set a new nail at the base of the tree.
- 26" quad maple (made): N 80° W, 28.01'. I set a nail at the base of the tree.
- 1" x 18" iron pipe (made): N 62°02'49" W, 36.19'.
- 1" x 18" iron pipe (made): N 01°44'48" W, 8.73'.



Scale: 1"=20'  
Bearings to nails: magnetic  
Bearings to iron pipes: Oneida  
Co Grid



3(i) I, Anthony R. Jones, Wisconsin Professional Land Surveyor No S-2508, hereby certify that the corner location shown on this record was determined by me, and that this U.S. Public Land Survey Monument Record is correct and complete to the best of my knowledge and belief.

