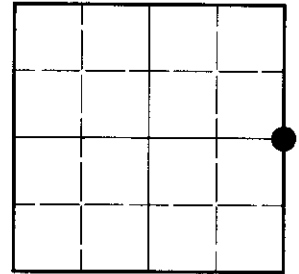


U.S. PUBLIC LAND SURVEY MONUMENT RECORD

NOTE: This form is intended and designed to fulfill all requirements of Wisconsin Administrative Code, Chapter A-E 7.08 U.S. Public Land Survey Monument Record (3)(a)(b)(c)(d)(e)(f)(g)(h)(i). An additional sheet may be added if necessary to conform with said requirements.

(a) Corner location: **Township 36 North**
Range 9 East

Town of Pelican
Oneida County, Wisconsin



Section 22

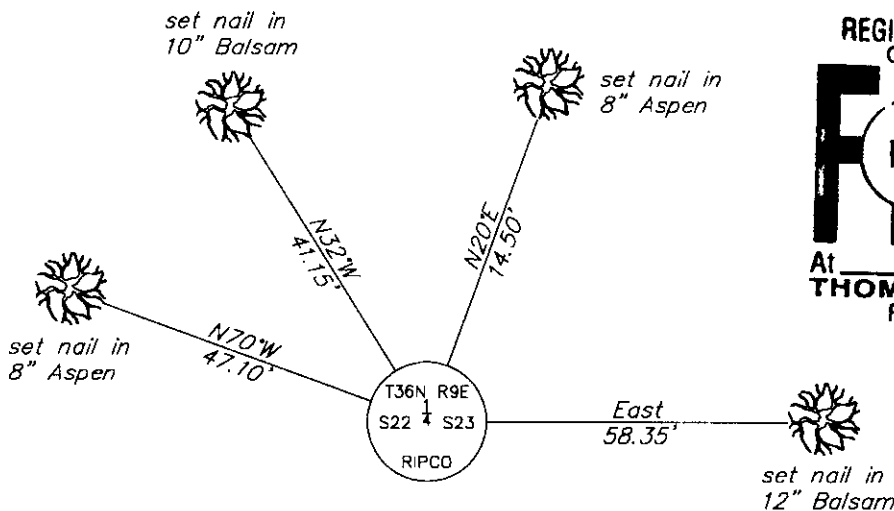
(b)(f)(g)(h) Description of monument found at this corner and if it was accepted, state all evidence (material, testimonial, occupational, plats, records, other monuments) used as a basis for accepting. If not accepted or if nothing was found, state evidence used as basis for establishing location. If reestablished through lost corner proportionate methods, indicate all monuments, distances and directions used to establish. Indicate type of monument found or set and sign post.

July-August, 1863: William Daugherty, U.S. Deputy Surveyor, set a wood post witnessed by a Y.Pine 20" S14°E, 41 lks. and a Birch 6" N28°W, 10 lks.

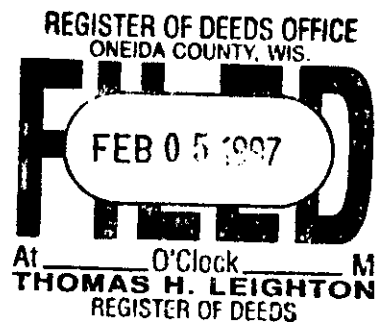
November, 1973: William Scherer, Registered Land Surveyor, found a brass capped iron pipe witnessed by a Balsam 14" N56°E, 14.15 feet; an Aspen 4" S26°E, 12.45 feet and an Aspen 6" N59°W, 14.95 feet.

January 9, 1997: I found and accepted a 2" dia. iron pipe with a 3" dia. aluminum cap 16" above grade and marked as shown below. A 1" dia. iron pipe bears Southwest, 0.35 feet. I established accessories as shown below and set a plastic sign post North, 1 foot.

(c)(d)(e) Plan view of corner with ties to at least 4 witness monuments. If in disagreement with previously established corner, show the distances between the two corners and also indicate the ties to the disputed corner.



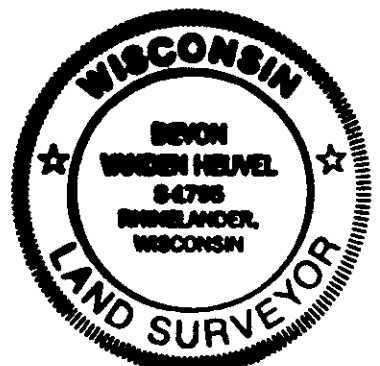
(NOT TO SCALE)



(i) I, Devon Vanden Heuvel, Registered Land Surveyor #S-1795, hereby certify that the corner location on this record was determined by me or under my direction and control and that this U.S. Public Land Survey Monument Record is correct and complete to the best of my knowledge and belief.

Devon Vanden Heuvel
 Signature

1-10-97
 Date



Index No. P-17

3609222000