

# U.S. PUBLIC LAND SURVEY MONUMENT RECORD

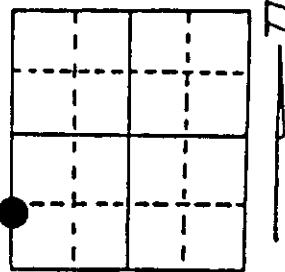
**Note:** This form is intended and designed to fulfill all requirements of Wisconsin Administrative Code, Chapter A-E 7.08 U.S. Public Land Survey Monument Record (3) (a) (b) (c) (d) (e) (f) (g) (h) (i). An additional sheet may be added if necessary to conform with said requirements.

(a) Corner location: Township 36 North

Range 9 East/West

Town/City/Village Pelican Lake

County Oneida



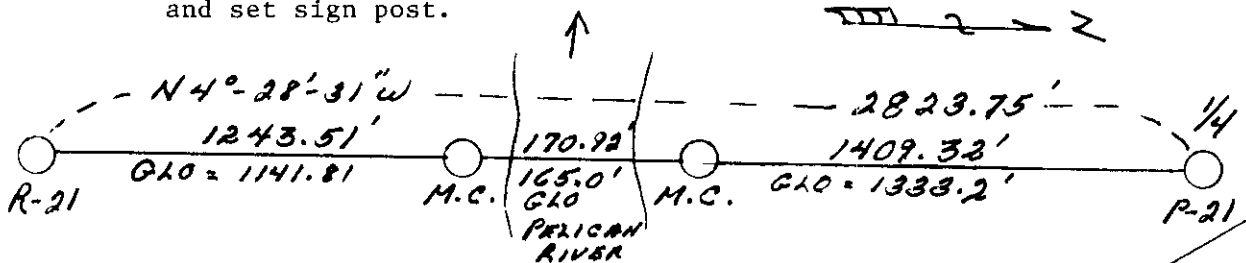
Section 24

(b) (f) (g) (h) Description of monument found at this corner and if it was accepted, state all evidence (material, testimonial, occupational, plats, records, other monuments) used as a basis for accepting. If not accepted or if nothing was found, state evidence used as basis for establishing location. If reestablished through lost corner proportionate methods, indicate all monuments, distances and directions used to establish. Indicate type of monument found or set and sign post.

1863 - Wm. Daugherty established this corner at 19.80 Chains on North Bank of Pelican River and made BTs: 12" Y. Pine, N49°W, 490 Links (323.40').

1924 - Vaughan restored corner and called it S 1/16 and M.C.

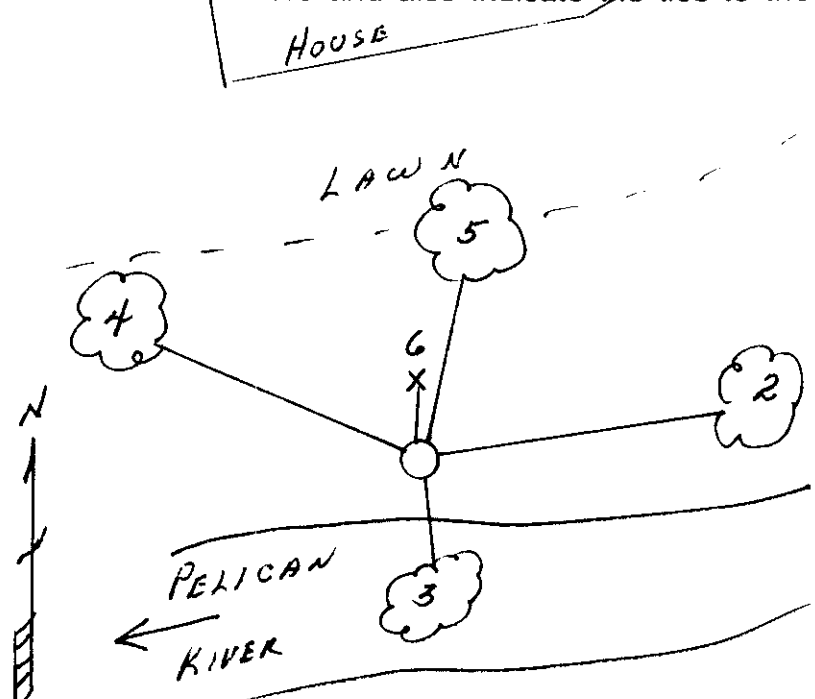
2/10/1992 - Milo E. Stefan restored Meander Corner on Section Line and 1409.32' South of Quarter Corner N4°-28'-31"W. We placed an aluminum monument, made BTs and set sign post.



(c) (d) (e) Plan view of corner with ties to at least 4 witness monuments. If in disagreement with previously established corner, show the distances between the two corners and also indicate the ties to the disputed corner.

- 1) 2" x 30" Aluminum county monument
- 2) 12" Jack Pine, N77°E, 69.33 feet.
- 3) 9" White Birch, S5°E, 2.82 feet.
- 4) 14" Red Oak, N71°W, 39.33 feet.
- 5) 5" Red Oak, N7°E, 9.00 feet.
- 6) Plastic sign post, North, 1.0 feet.

Distances to nail in side of BTs.  
BTs not blazed.  
Waters edge, South, 17.0 ±'



(i) I, Milo E. Stefan  
(type or print name) certify that the corner location on this record was determined by me or under my direction and control and that this U.S. Public Land Survey Monument Record is correct and complete to the best of my knowledge and belief.

Milo E. Stefan  
Signature

2/28/92  
Date



Index No. Q, R - 21  
North, M.C.

3609231000

Stamp