

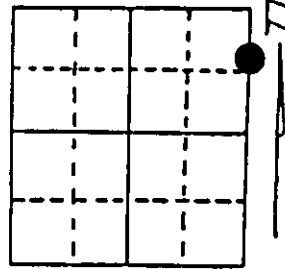
U.S. PUBLIC LAND SURVEY MONUMENT RECORD

Note: This form is intended and designed to fulfill all requirements of Wisconsin Administrative Code, Chapter A-E 7.08 U.S. Public Land Survey Monument Record (3) (a) (b) (c) (d) (e) (f) (g) (h) (i). An additional sheet may be added if necessary to conform with said requirements.

(a) Corner location: Township 36 North
 Range 9 East/West

Town/City/Village Pelican Lake

County Oneida

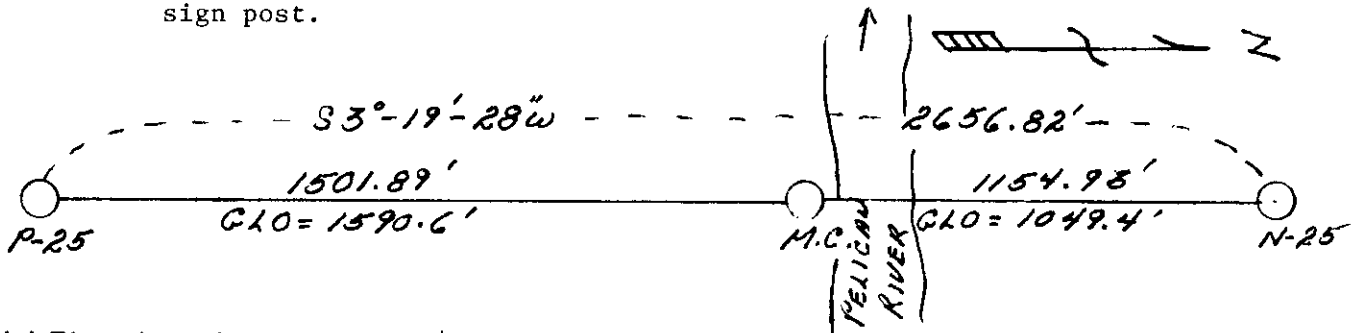


Section 24

(b) (f) (g) (h) Description of monument found at this corner and if it was accepted, state all evidence (material, testimonial, occupational, plats, records, other monuments) used as a basis for accepting. If not accepted or if nothing was found, state evidence used as basis for establishing location. If reestablished through lost corner proportionate methods, indicate all monuments, distances and directions used to establish. Indicate type of monument found or set and sign post.

1859 - H. C. Fellows established this corner at 64.10 Chains, set post for Meander Corner and one BT: 6" Tamarack, S71°E, 219 Links.

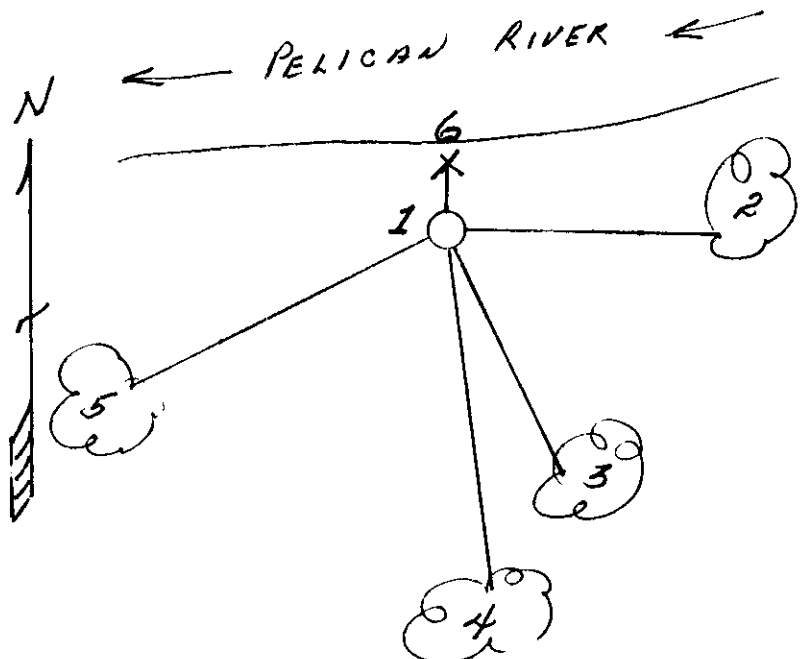
2/10/1992 - Milo E. Stefan restored this Meander Corner on the South Bank of the Pelican River as it is today. This being 1154.93'; S3°-19'-28"W of the Section Corner. We set a 2" x 30" aluminum monument with four new BTs and sign post.



(c) (d) (e) Plan view of corner with ties to at least 4 witness monuments. If in disagreement with previously established corner, show the distances between the two corners and also indicate the ties to the disputed corner.

- 1) 2" x 30" aluminum county monument.
- 2) 10" White Oak, East, 25.48'.
- 3) 8" White Oak, S29°E, 31.06'.
- 4) 12" White Oak, S7°E, 51.07'.
- 5) 14" White Oak, S54°W, 33.90'.
- 6) Plastic sign post next to monument.

Distances to nail in side of BTs.
 Stump blaze scribed "BT".



(i) I, Milo E. Stefan
 (type or print name) certify that the corner location on this record was determined by me or under my direction and control and that this U.S. Public Land Survey Monument Record is correct and complete to the best of my knowledge and belief.

Milo E. Stefan
 Signature

2/28/92
 Date



3609243300

Stamp