

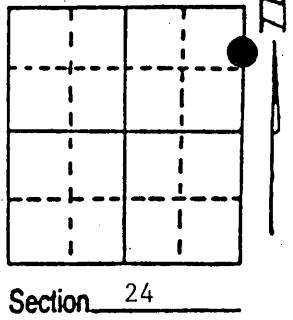
# U.S. PUBLIC LAND SURVEY MONUMENT RECORD

**Note:** This form is intended and designed to fulfill all requirements of Wisconsin Administrative Code, Chapter A-E 7.08 U.S. Public Land Survey Monument Record (3) (a) (b) (c) (d) (e) (f) (g) (h) (i). An additional sheet may be added if necessary to conform with said requirements.

(a) Corner location: Township 36 North  
 Range 9 East/West

Town/City/Village Pelican Lake

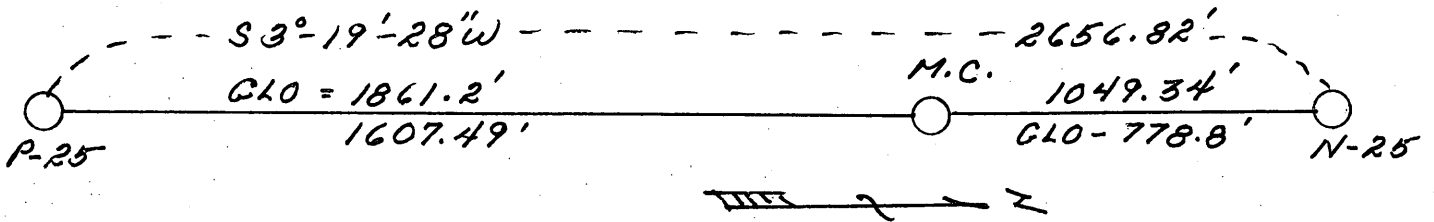
County Oneida



(b) (f) (g) (h) Description of monument found at this corner and if it was accepted, state all evidence (material, testimonial, occupational, plats, records, other monuments) used as a basis for accepting. If not accepted or if nothing was found, state evidence used as basis for establishing location. If reestablished through lost corner proportionate methods, indicate all monuments, distances and directions used to establish. Indicate type of monument found or set and sign post.

1859 - H. C. Fellows crossed river and at 68.20 Chains set post for Meander Corner and  
 BTs: 6" Tamarack, N11°W, 428 Links (282.48')  
 7" Tamarack, ?12½°E, 522 Links (344.52')

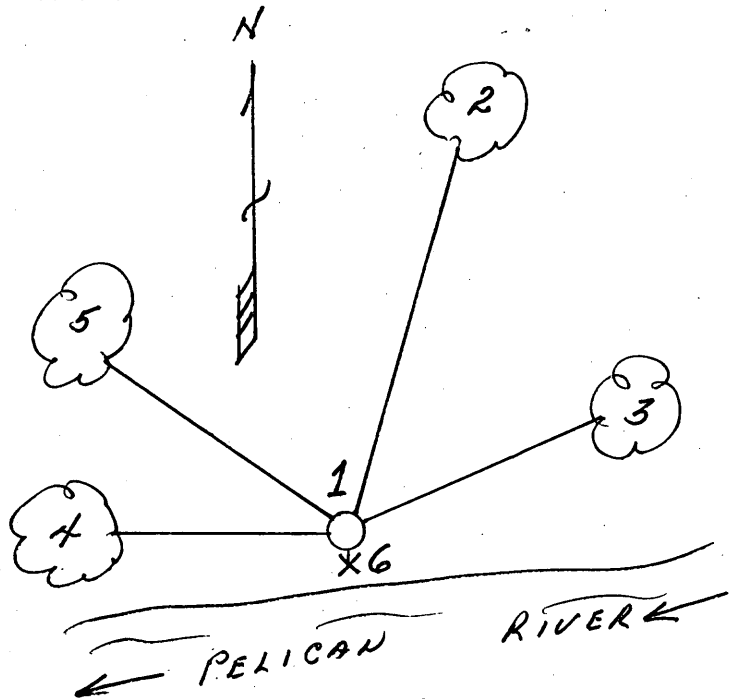
2/10/1992 - Milo E. Stefan restored this Meander Corner on Section Line and on North Bank of Pelican River as it is today. This being 1049.34'; S3°-19'-28" W of Section Corner. We set a 2" x 30" aluminum monument with four new BTs and set a sign post.



(c) (d) (e) Plan view of corner with ties to at least 4 witness monuments. If in disagreement with previously established corner, show the distances between the two corners and also indicate the ties to the disputed corner.

- 1) 2" x 30" Aluminum County Monument
- 2) 10" Red Maple, N7°E, 76.00'
- 3) 10" White Oak, N41°E, 49.41'
- 4) 10" White Oak, West, 24.78'
- 5) 4" White Oak, N50°W, 32.60'
- 6) Plastic sign post on South edge of monument.

Distances to nail in side of BTs.  
 Stump blazes scribed "BT".



(i) I, Milo E. Stefan  
 (type or print name) certify that the corner location on this record was determined by me or under my direction and control and that this U.S. Public Land Survey Monument Record is correct and complete to the best of my knowledge and belief.

Milo E. Stefan  
 Signature

2/28/92  
 Date



Index No. N.O. - 25  
 NORTH ME.

3609243400

Stamp

REGISTER OF DEEDS OFFICE  
ONEIDA COUNTY, WIS.

**FILED**  
MAR 17 1992

At \_\_\_\_\_ O'Clock \_\_\_\_\_ M  
**THOMAS H. LEIGHTON**  
REGISTER OF DEEDS