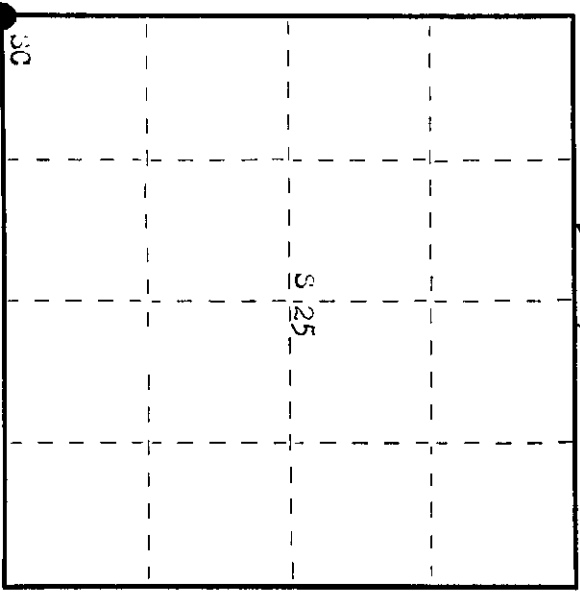
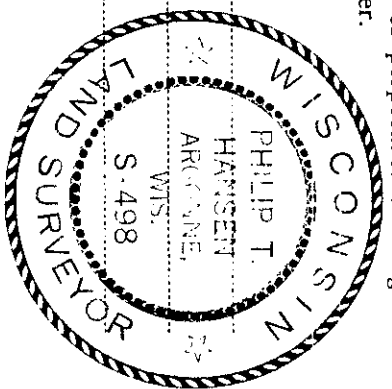


State of Wisconsin

County of Oneida } ss.

I Phillip T. Hansen, do hereby certify that on the 13th day of April, 1976, I found evidence of the section corner of the 25, 26, 25, 36 Township 36 North, Range 9 East, Fourth Principal Meridian, as described hereon; and that from this evidence I established a new monument and accessories as described hereon to perpetuate the original location of this corner.

Resident witnesses:
 Glen Barker
 Jim Clarlin
 Herb Wagoner



○ = Corner monument restored.

History of original corner establishment: Original Corner established by Wm. L. Dougherty, Deputy Surveyor, in 1863, from Welch Y. Fine 12" bears S 24° E 188 lks and Birch 0" bears N 73° W 305 lks.
 Corner restored by D.H. Vaughan, County Surveyor.
 Corner re-established by Ripco Surveyors, Goddard and crew, in 1959. Set iron pipe as witness Corner 50 lks South of Corner Welch fell in road.
 Marked NBTS - Tamarack 8" S 27° W 71 lks, Tamarack 9" N 18° W 60 lks.

Description of corner evidence found: Recovered 2" iron pipe with 3" squared brass cap and a 3" squared tamarack post beside it. Cap stamped.
 True Corner falls in road - no trace of same.
 This portion of CTH "G" now relocated 81 lks North. Old location now grown up to alders.
 Recovered 0.91" - Tamarack 9" N 18° W 60 lks destroyed by relocation.
 Tamarack 8" S 27° W 71 lks now a cut off stump. Cor. 50 lks in. Scribed T36 9 235.

Description of monument and accessories I established to perpetuate the original location of this corner.
 as site of original Corner no longer used for road, decided to re-establish sec. Corner at original location, which was established from stump of 8" Tamarack and witness Corner.
 Set 2 1/2" Bernitsen A-1 Federal monument stamped.
 Placed a rock cairn around base of monument.
 MBO - Hilline Pole S 82° W 149.8 lks. T36N R9E
 Top of 21 diameter culvert N 24° E 21 lks. sec. 26 | 25
 No other trees near suitable for BTs. 3498 1976 35 | 36

Dated at Rhinelander, Wis., this 22nd day of July, 1976.

Signature *Phillip T. Hansen* Title Registered Land Surveyor Registration No. S-498
 County Surveyor, Registered Land Surveyor, or other duly authorized official

Office of Register of Deeds, County of Oneida, Wis. I hereby certify that the within instrument was filed in this office for record on the 20th day of September, 1976 at 1:02 o'clock P.M.

Gene Teraga Kricha
 (Register of Deeds)

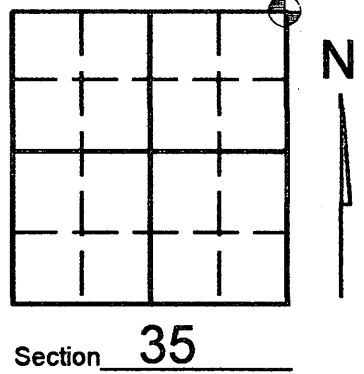
By _____ Deputy 3609266000

U.S. PUBLIC LAND SURVEY MONUMENT RECORD

Note: This form is intended and designed to fulfill all requirements of Wisconsin Administrative Code, Chapter A-E 7.08 U.S. Public Land Survey Monument Record (3)(a)(b)(c)(d)(e)(f)(g)(h)(i). An additional sheet may be added if necessary to conform with said requirements.

(a) Corner location: Township 36 North
Range 09 (East) West

Town/City/Village PELICAN
County ONEIDA

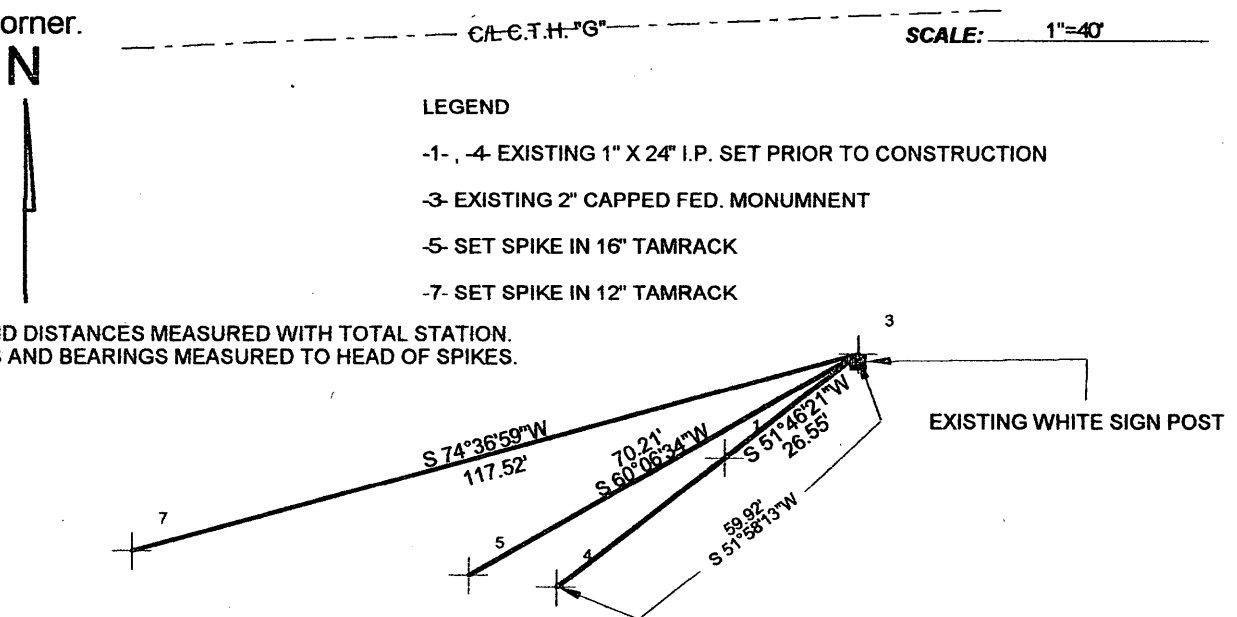


(b) (f) (g) (h) Description of monument found at this corner and if it was accepted, state all evidence (material, testimonial, occupational, plats, records, other monuments) used as a basis for accepting. If not accepted or if nothing was found, state evidence used as basis for establishing location. If reestablished through lost corner proportionate methods, indicate all monuments, distances and directions used to establish. Indicate type of monument found or set and sign post.

SEE CORNER RESTORATION FORM V-21 FOR HISTORY.

-FEBRUARY 2005- Kevin Bixby found corner and witness's undisturbed after County Hwy. "G" construction. (SEE DRAWING BELOW)

(c) (d) (e) Plan view of corner with ties to at least 4 witness monuments. If in disagreement with previously established corner, show the distances between the two corners and also indicate the ties to the disputed corner.



ANGLES AND DISTANCES MEASURED WITH TOTAL STATION.
DISTANCES AND BEARINGS MEASURED TO HEAD OF SPIKES.

LEGEND

- 1-, -4 EXISTING 1" X 24" I.P. SET PRIOR TO CONSTRUCTION
- 3- EXISTING 2" CAPPED FED. MONUMENT
- 5- SET SPIKE IN 16" TAMRACK
- 7- SET SPIKE IN 12" TAMRACK

(i) I, KEVIN P. BIXBY

(type or print name) certify that the corner location on this record was determined by me or under my direction and control and that this U.S. Public Land Survey Monument Record is correct and complete to the best of my knowledge and belief.

Kevin P. Bixby Signature 02/06/05 Date



Stamp
360926 0000

Index No. V 21