

# U.S. PUBLIC LAND SURVEY MONUMENT RECORD

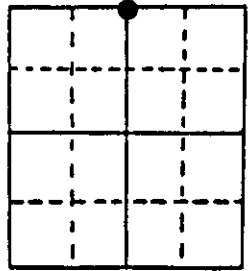
Note: This form is intended and designed to fulfill all requirements of Wisconsin Administrative Code, Chapter A-E 7.08 U.S. Public Land Survey Monument Record (3) (a) (b) (c) (d) (e) (f) (g) (h) (i). An additional sheet may be added if necessary to conform with said requirements.

(a) Corner location: Township 36 North

Range 9 East/West

Town/City/Village PELICAN

County ONEIDA



Section 35

(b) (f) (g) (h) Description of monument found at this corner and if it was accepted, state all evidence (material, testimonial, occupational, plats, records, other monuments) used as a basis for accepting. If not accepted or if nothing was found, state evidence used as basis for establishing location. If reestablished through lost corner proportionate methods, indicate all monuments, distances and directions used to establish. Indicate type of monument found or set and sign post.

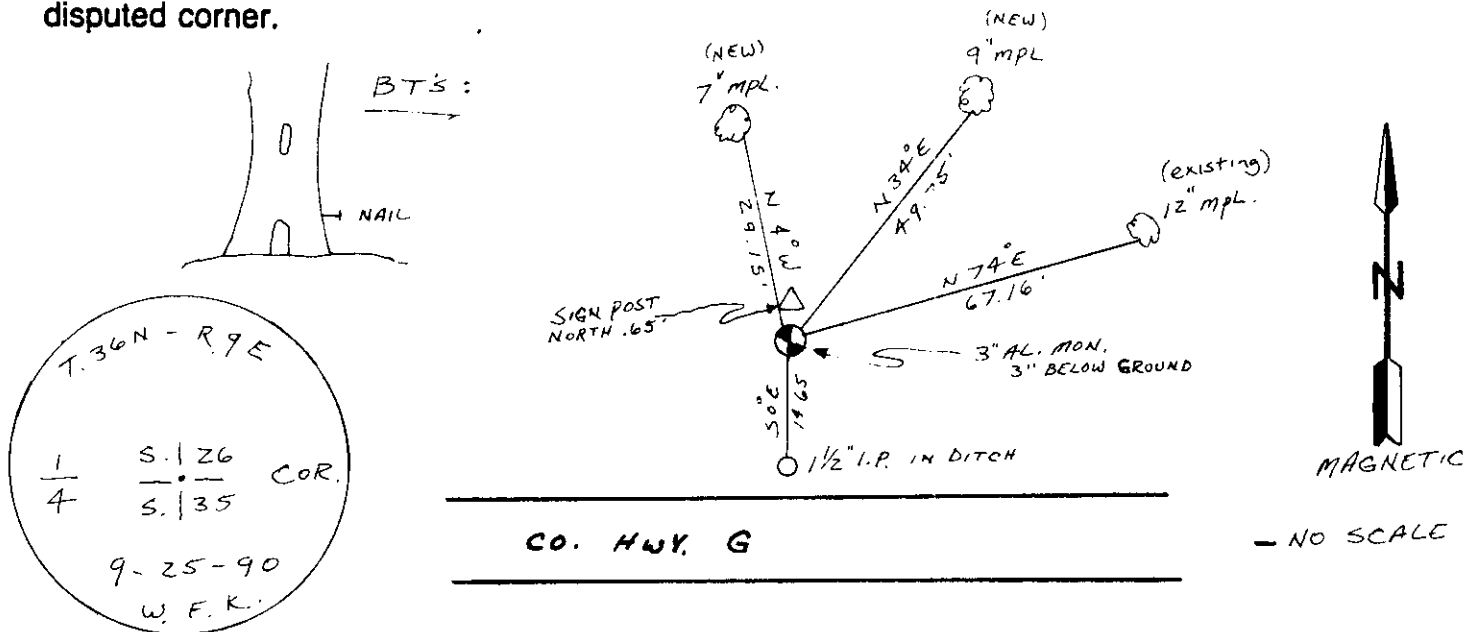
1863 - WM DAIGHERTY ESTABLISHED ORIGINAL CORNER; BT: 12" BIRCH, S17°E, 212.16'

1981 - GRISWOLD SET 2"x30" IRON PIPE FLUSH WITH GROUND NORTH SIDE OF COUNTY HWY. G.

BT'S: 8" BALSAM, N12°E, 14.2'  
10" MAPLE, N75°E, 66.6'

1990 - I FOUND 2"x30" IRON PIPE & GRISWOLD'S MAPLE B.T. REPLACED IRON PIPE WITH 3" ALUMINUM COUNTY MONUMENT 3" BELOW SURFACE. SET WHITE SIGN POST NORTH .65'

(c) (d) (e) Plan view of corner with ties to at least 4 witness monuments. If in disagreement with previously established corner, show the distances between the two corners and also indicate the ties to the disputed corner.



(i) I, WILLIAM F. KELLY  
(type or print name) certify that the corner location on this record was determined by me or under my direction and control and that this U.S. Public Land Survey Monument Record is correct and complete to the best of my knowledge and belief.

William F. Kelly                      10-30-90  
Signature                                      Date



Index No. V-19

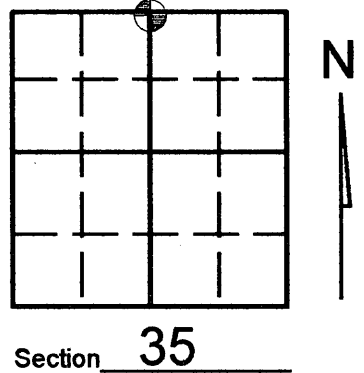
3609260020

Stamp

# U.S. PUBLIC LAND SURVEY MONUMENT RECORD

Note: This form is intended and designed to fulfill all requirements of Wisconsin Administrative Code, Chapter A-E 7.08 U.S. Public Land Survey Monument Record (3)(a)(b)(c)(d)(e)(f)(g)(h)(i). An additional sheet may be added if necessary to conform with said requirements.

(a) Corner location: Township 36 North  
 Range 09 (East) West  
 Town/City/Village PELICAN  
 County ONEIDA

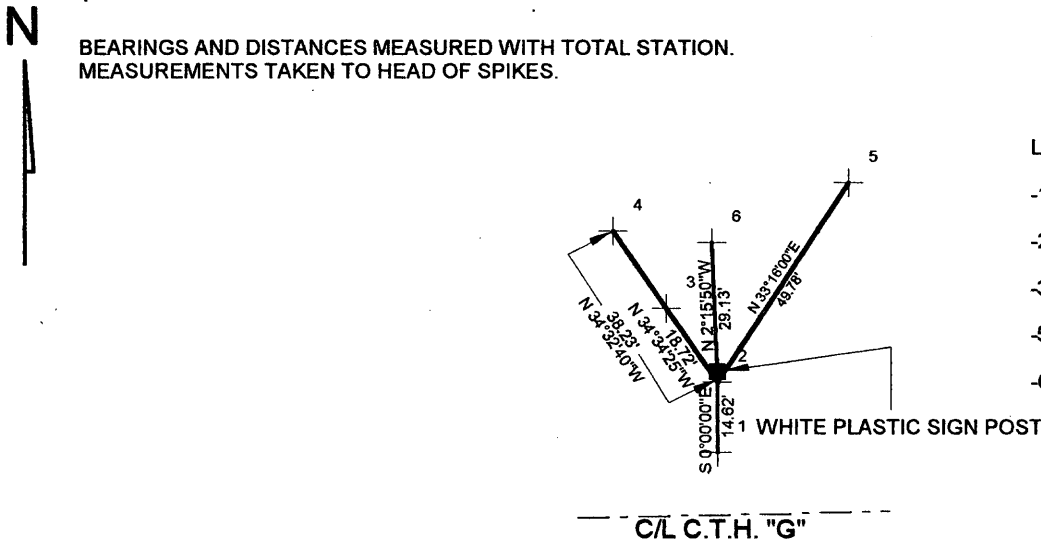


(b) (f) (g) (h) Description of monument found at this corner and if it was accepted, state all evidence (material, testimonial, occupational, plats, records, other monuments) used as a basis for accepting. If not accepted or if nothing was found, state evidence used as basis for establishing location. If reestablished through lost corner proportionate methods, indicate all monuments, distances and directions used to establish. Indicate type of monument found or set and sign post.

SEE CORNER RESTORATION FORM V-19 FOR HISTORY

-FEBRUARY 2005- Kevin Bixby found corner and witness's undisturbed after construction of County Hwy. "G" (SEE DRAWING BELOW.)

(c) (d) (e) Plan view of corner with ties to at least 4 witness monuments. If in disagreement with previously established corner, show the distances between the two corners and also indicate the ties to the disputed corner.



SCALE: 1"=40'

LEGEND

- 1- Existing 1 1/2" iron pipe
- 2- Existing Oneida County Monument
- 3-, -4- Existing 1" I.P. set prior to construction.
- 5- set spike in 15" maple (EX.B.T.)
- 6- set spike in 12" maple (EX. B.T.)

(i) I, KEVIN P. BIXBY  
 (type or print name) certify that the corner location on this record was determined by me or under my direction and control and that this U.S. Public Land Survey Monument Record is correct and complete to the best of my knowledge and belief.



Index No. V 19

Kevin P. Bixby  
 Signature Date 02/05/05

Stamp

360926 0020