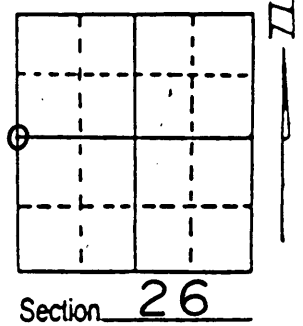


U.S. PUBLIC LAND SURVEY MONUMENT RECORD

Note: This form is intended and designed to fulfill all requirements of Wisconsin Administrative Code, Chapter A-E 7.08 U.S. Public Land Survey Monument Record (3) (a) (b) (c) (d) (e) (f) (g) (h) (i). An additional sheet may be added if necessary to conform with said requirements.

(a) Corner location: Township 36 North
 Range 9 East/West
 Town/City/Village PELICAN
 County ONEIDA



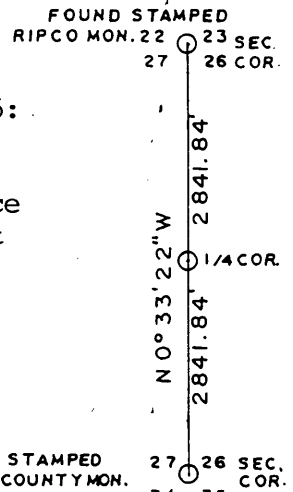
(b) (f) (g) (h) Description of monument found at this corner and if it was accepted, state all evidence (material, testimonial, occupational, plats, records, other monuments) used as a basis for accepting. If not accepted or if nothing was found, state evidence used as basis for establishing location. If reestablished through lost corner proportionate methods, indicate all monuments, distances and directions used to establish. Indicate type of monument found or set and sign post.

1863 William E. Daugherty ran North between sections 26 & 27 set Quarter section post at 40.00. BTs. Birch 10, S 50 W, 28: Birch 12, N 10 E, 123.

1894 B.F.Dorr at West 1/4 corner Sec. 26 made BTs. Spruce 5, N 54½ W, 11.75: Spruce 6, S 71¼ E, 23. Set wood post at midway split.

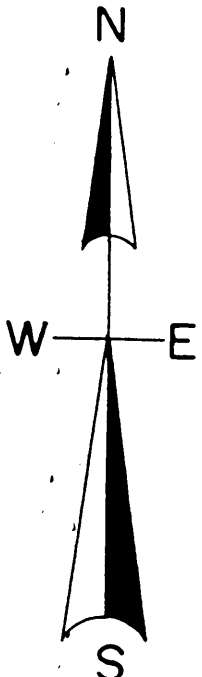
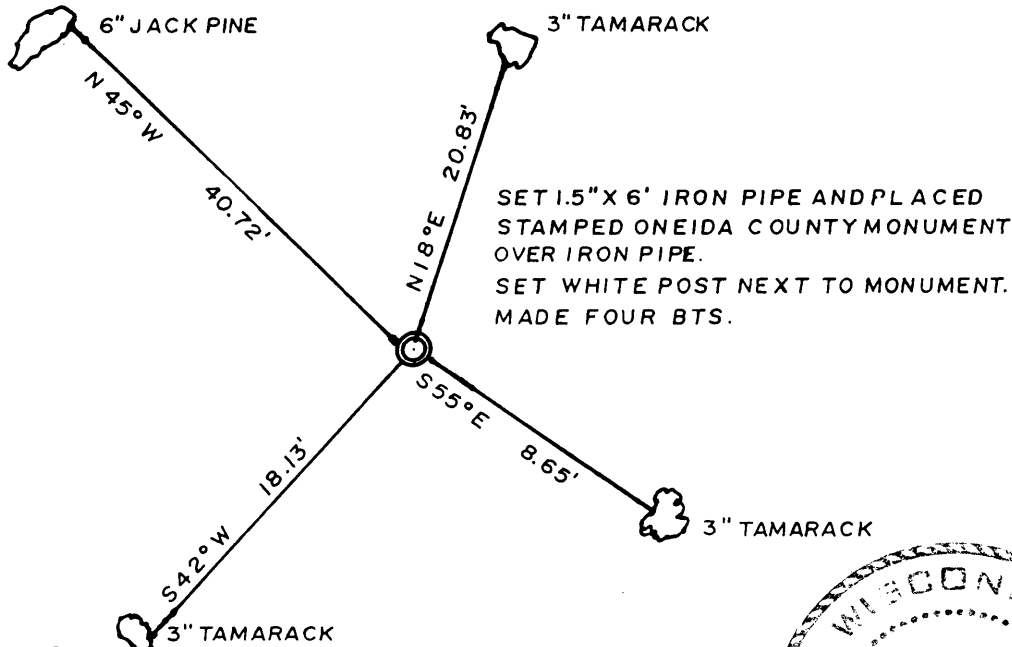
1998 I researched for corner in burnt over, ~~flooded~~ spruce swamp. No evidence of corner. Set Oneida County Monument at mid Distance between the Northwest Section corner and Southwest Section corner of Sec. 26. Made four BTs.

Jan. 23, 2004 corner and BTs. in good shape.

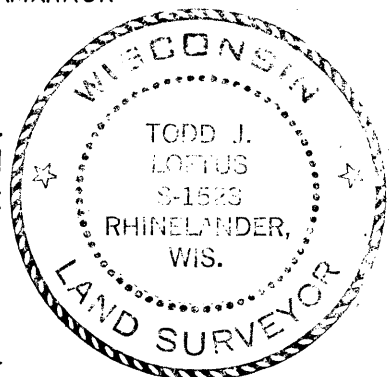


(c) (d) (e) Plan view of corner with ties to at least 4 witness monuments. If in disagreement with previously established corner, show the distances between the two corners and also indicate the ties to the disputed corner.

Distances measured to spike in tree.
 Bearings taken by Hand Compass.
 No scale.



(i) I, Todd J. Loftus
 (type or print name) certify that the corner location on this record was determined by me or under my direction and control and that this U.S. Public Land Survey Monument Record is correct and complete to the best of my knowledge and belief.



Todd J. Loftus Signature Feb. 23, 2004 Date

3609272000
Stamp

Index No. T-17