

U. S. PUBLIC LAND SURVEY MONUMENT RECORD

INSTRUCTIONS : This record shall show the location of the corner and shall include all of the following nine elements (a through i).

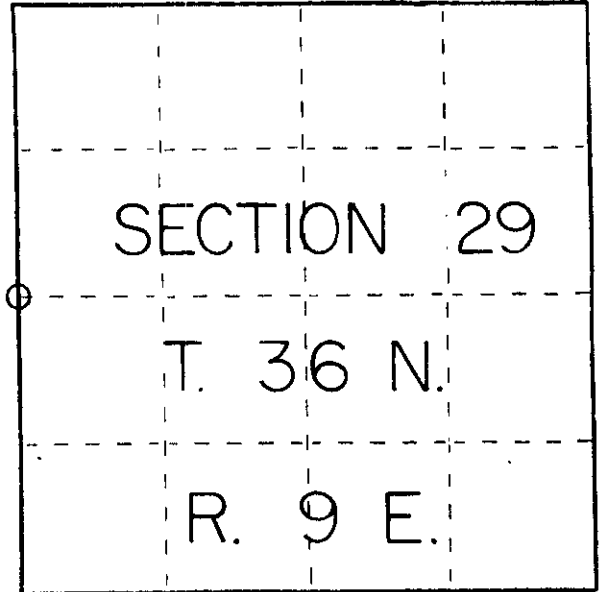
(a) Identify the corner by reference to the U.S. public land survey system.

○ = Corner monument restored.

1/4 corner between sections 29 and 30 Township 36 North, Range 9 East, Oneida County, Wisconsin.

1787 - Original Government Survey, North between 29 and 30 Var. 7° 00', 40.00 set 1/4 post: upper 7 1/4° 5' 12" 132° 32' 32"

William Dau, north, Surveyor



(b) Describe any record evidence, monument evidence, occupational evidence, testimonial evidence or any other material evidence you considered, and whether the monument was found or placed.

W. L. Dorr 1894 set west 1/4 post Section 29, Township 36 North Range 9 East made new bearing trees; tan 10 30° 13' tan 10 16° 29.15

W. L. Vaughn 1903 Section 29, 1906 1/4, went to center set by Dorr, ran west 7 3/4° 14.43 fell 0.5 bk. S of 1/4 post set by Dorr, south from 1/4 post on fence line said to be on section line

Keith J. Hall 1954, made survey from corner, I have copy of map, no notes map shows corner 246' south of meander corner on Nixon Lake

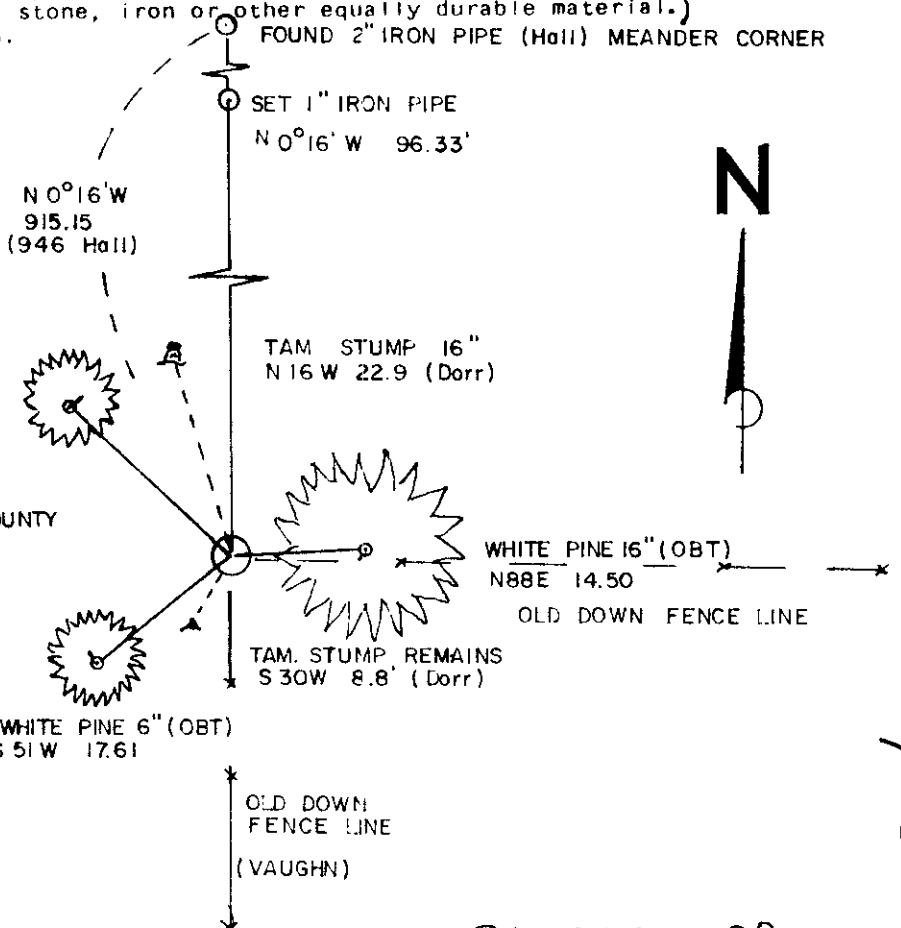
History of corner continued in Section (c)

(c) In the plan view drawing below, provide reference ties to at least 4 witness monuments, or, if the location is within a municipality, to at least 2 witness monuments. (Witness monuments shall be made of concrete, natural stone, iron or other equally durable material.) Describe witness monuments.

(d) Show a plan view drawing depicting the relevant monuments and reference ties which is sufficient in detail to enable accurate relocation of the corner monument if the corner monument is disturbed. Indicate north.

BEARINGS MAGNETIC
DISTANCES TO SPIKE IN
CENTER OF TREE

BLACK
SPRUCE 6"
N47W 23.00



FOUND 2" IRON PIPE, REPLACED WITH ONEIDA COUNTY ALUMINUM MONUMENT.

FOUND B.F. DORR'S TAM. BEARING TREES

FOUND VAUGHN'S FENCE LINE SOUTH

FOUND LOFTUS BEARING TREES

Compared with all record data and accepted as correct.

Robert H. Winat
Robert H. Winat, Oneida Co. Surv.
15 March 1984

3609302000

T-5

(e) Describe any material discrepancy between the location of the corner as restored or reestablished and the location of that corner as previously restored or reestablished by distance and direction. Show the discrepancy on the plan view drawing under (d), above. Show the distances between the corner as previously restored or reestablished and (1) the corner as restored or reestablished, and (2) to at least 2 of the witness monuments shown on the drawing in (d), above.

Don't know, found corner, made bearing, then, do not have his notes 1960

Edward Johnson 1960 found 2" iron pipe at corner, as shown on the recorded plat of Mason-Johnson Plat.

(f) Was the corner restored through acceptance of (1) an obliterated evidence location, or, (2) a found perpetuated location?

found and perpetuated corner

(g&h) Was the corner reestablished through lost corner proportionate methods? If so, show the method, including the directions and distances to other public land survey corners used as evidence or used for proportioning in determining the corner location?

REGISTRY OFFICE }
Oneida County, Wis. }

Received for Record the 15 day of

March A.D. 1984 at

11:30 o'clock A. M. and recorded in

Vol. _____ on page _____

Donis Verage Kuehn
Register

Cynthia A. Pitts, Deputy



(i) I, WILLIAM IMMICH
(type or print name) certify that the corner location shown on this record was determined by me or under my direction and control and that this U.S. Public Land Survey Monument Record is correct and complete to the best of my knowledge and belief.

William Immich
Signature

FEBRUARY 29, 1984
Date