

U.S. PUBLIC LAND SURVEY MONUMENT RECORD

Note: This form is intended and designed to fulfill all requirements of the Wisconsin Administrative Code, Chapter A-E 7.08 U.S. Public Land Monument Record (3)(a)(b)(c)(d)(e)(f)(g)(h)(i). An additional sheet may be added if necessary to conform with said requirements.

REGISTER OF DEEDS OFFICE
ONEIDA COUNTY
FILED

MAR 20 2014

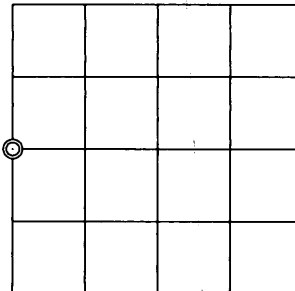
(a) CORNER LOCATION:
West Quarter Corner of Section 35
Township 36 North
Range 9 East
Town of Pelican
County of Oneida

COORDINATES
North: 137510.5523
East: 281465.6035
Control Station: OC 220
Latitude: 45°34'16.29154" N
Longitude: 89°19'7.03800" W
Datum: NAD-83, 91
Method: RTK

AT O'CLOCK M
BY
REGISTER OF DEEDS

(RECORDING AREA)

SECTION 35



(b) HISTORY OF ORIGINAL CORNER ESTABLISHMENT

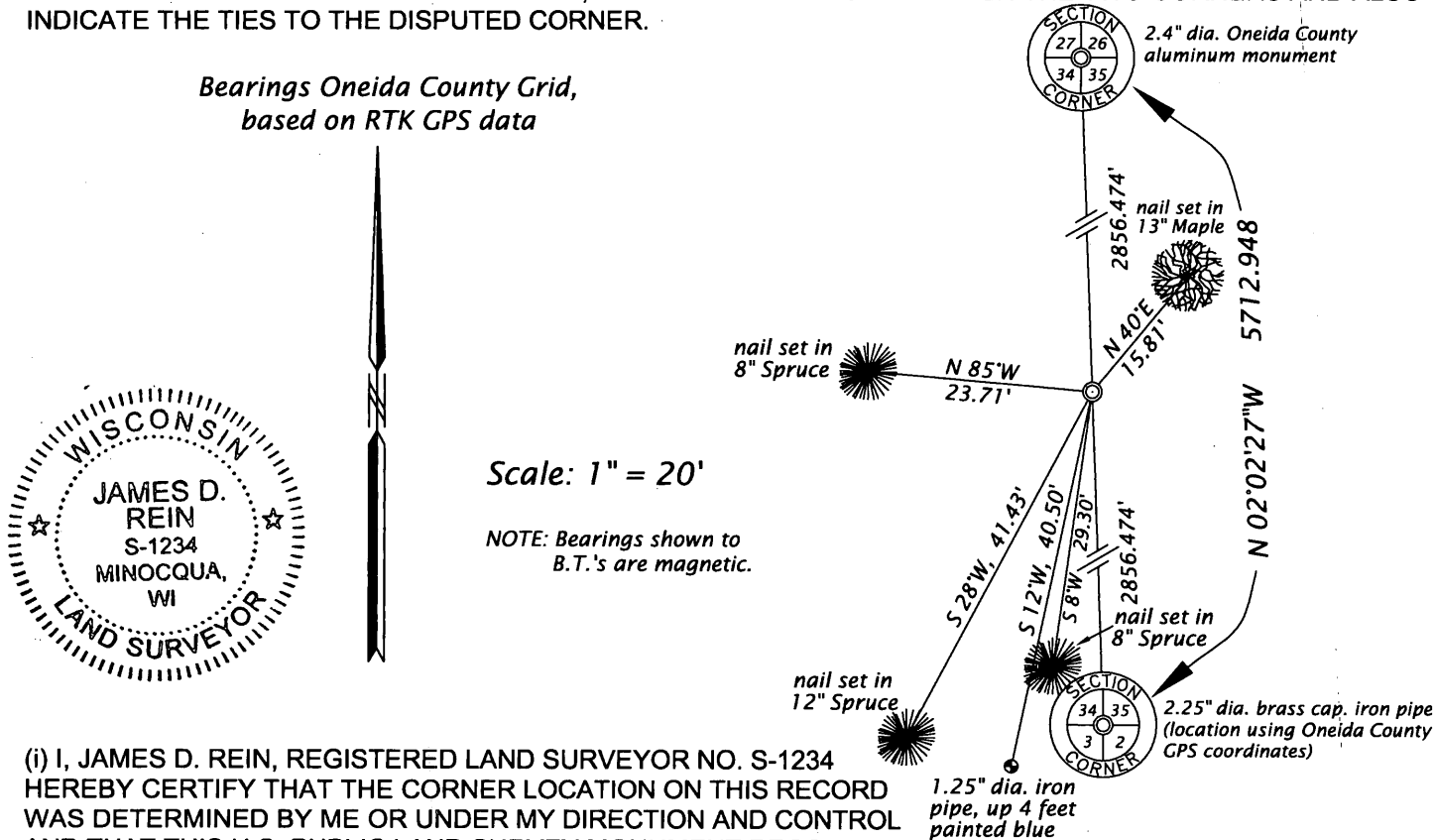
Original Surveyor: William E. Daugherty
Date of Survey: Commenced July 30, 1863
Completed August 11, 1863
Original B.T.'S Birch 6", N31°E, 167 lks.
Birch 5", S56°W, 107 lks.

(f)(g)(h) DESCRIPTION OF MONUMENT FOUND AT THIS CORNER AND IF IT WAS ACCEPTED, STATE ALL EVIDENCE (MATERIAL, TESTIMONIAL, OCCUPATIONAL, PLATS, RECORDS, OTHER MONUMENTS) USED AS A BASIS FOR ESTABLISHING LOCATION. IF NOT ACCEPTED OF IF NOTHING WAS FOUND, STATE EVIDENCE USED AS BASIS FOR ESTABLISHING LOCATION. IF REESTABLISHED THROUGH LOST CORNER PROPORTIONATE METHODS, INDICATE ALL MONUMENTS, DISTANCES AND DIRECTIONS USED TO ESTABLISH. INDICATE TYPE OF MONUMENT AND SIGN POST FOUND OR SET.

October 10, 1918 - D.H. Vaughan, surveys west line of Section 35, from northwest Section Corner to southwest Section Corner and did not set the Quarter Corner (Survey Book 79, page 141).

August 26, 2006 - James D. Rein, Registered Land Surveyor No. S-1234, found no evidence of the corner. We set a 2.4" dia. Oneida County aluminum monument in a wetland area by single proportion between the northwest Section Corner and the southwest Section Corner.

(c)(d)(e) PLAN VIEW OF CORNER WITH TIES TO AT LEAST 4 WITNESS MONUMENTS. IF IN DISAGREEMENT WITH PREVIOUSLY ESTABLISHED CORNER, SHOW THE DISTANCE BETWEEN THE TWO CORNERS AND ALSO INDICATE THE TIES TO THE DISPUTED CORNER.



(i) I, JAMES D. REIN, REGISTERED LAND SURVEYOR NO. S-1234
HEREBY CERTIFY THAT THE CORNER LOCATION ON THIS RECORD
WAS DETERMINED BY ME OR UNDER MY DIRECTION AND CONTROL
AND THAT THIS U.S. PUBLIC LAND SURVEY MONUMENT RECORD IS
CORRECT AND COMPLETE TO THE BEST OF MY KNOWLEDGE AND
BELIEF.

SIGNATURE _____ DATE 3-14-14

3609342000

INDEX NO. X-17