

CERTIFIED LAND CORNER RESTORATION

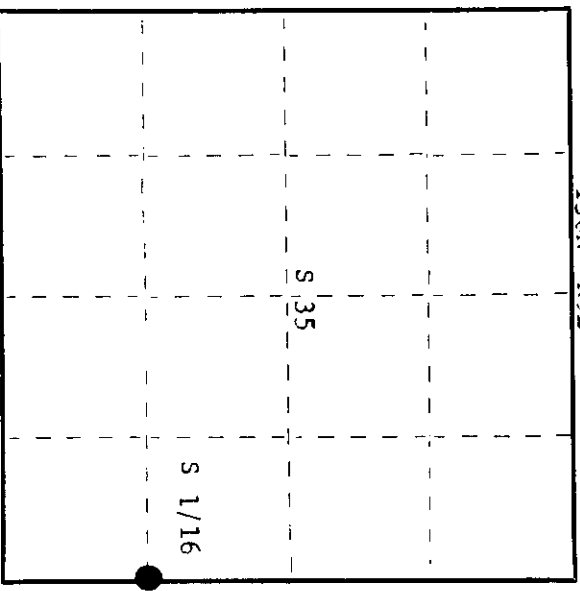
Index No. Y-21

State of Wisconsin

County of Oneida } ss.

I Phillip T. Hansen do hereby certify that on the 30th day of August 19 79, I found evidence of the S 1/16 corner of Sections 35 and 36 Township 36 North, Range 9 East, Fourth Principal Meridian, as described hereon; and that from this evidence I established a new monument and accessories as described hereon to perpetuate the original location of this corner.

Resident witnesses: Glen Barker, Jim Claflin, Herb Wagoner. PHILIP T. HANSEN ARGONNE, WIS. S. 498 LAND SURVEYOR



O = Corner monument restored.

History of original corner establishment:

Corner established by D.H. Vaughan, County Surveyor. Corner recovered and old BT's recovered by Loftus and crew, Ripco surveyors. Someone had moved the corner but old BT's in place. Marked NBT's - Cedar 3" N28°W 29 links, Hemlock 8" N53°E 51-3/4 links

Description of corner evidence found:

Recovered Ripco's 1" iron pipe with 2" brass cap, projecting 24", in good condition. Also an old squared cedar post laying beside it. Post scribed 1/8 S - 1/8 S. Recovered OBT's - Cedar 3" (5") N28°W 29 links, scribing grown over. Hemlock 8" (10") N53°E 51.75 links, scribing grown over. Brass cap stamped: S 1/16 S35 + S36 RIPCO

Description of monument and accessories I established to perpetuate the original location of this corner. Monument left in place as recovered. Drove support stakes beside base of monument. No additional accessories established.

Dated at Rhinelander, Wis. this 10th day of September, 1979

Signature: Phillip T. Hansen, County Surveyor, Registered Land Surveyor, or other duly authorized official. Title: Registered Land Surveyor. Registration No. S-498

Office of Register of Deeds, County of Oneida. I hereby certify that the within instrument was filed in this office for record on the 17th day of September, 1979 at 1:05 o'clock P.M.

Signature: Doree Verage Fuchs, (Register of Deeds)

By: Deputy 360935 1000