

CERTIFIED LAND CORNER RESTORATION

Index No. **E 17**

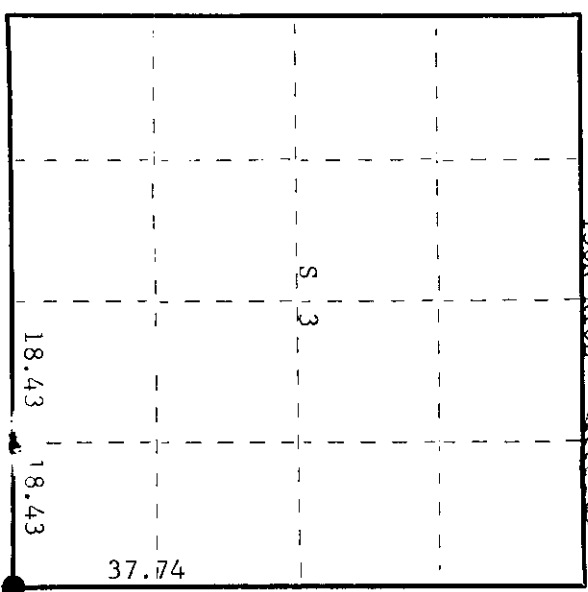
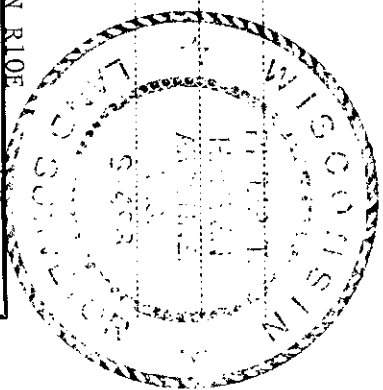
State of Wisconsin

County of Oneida } ss.

I, Philip T. Hansen, do hereby certify that on the 15th day of August, 1975, I found evidence of the Section Corner corner of Sections 2, 3, 10, and 11 Township 36 North, Range 10 East, Fourth Principal Meridian, as described hereon; and that from this evidence I established a new monument and accessories as described hereon to perpetuate the original location of this corner.

Resident witnesses:

Glen Barker
Jim Garlin



○ = Corner monument restored.

History of original corner establishment:

Original corner established by Wm. E. Dougherty, Government Deputy Surveyor, in 1863 from which white pine 12" bears N14°E, 25 links and aspen 12" bears S77°W, 30 links. Corner recovered and restored by D.H. Vaughan, County Surveyor, in 1899 and states that B.F. Dorr, County Surveyor, set this corner by double proportion in about 1897. Vaughan established BT's: Tamarack 16" N34-1/2°E 47-1/2 links and Tamarack 18" S54°W 8 links. Corner recovered by H.C. Lawrence, Registered Land Surveyor, in 1946. Found two old stake points, a scribed wooden post and also an iron pipe with brass cap. Found a dead down tamarack with scribe marks (original BT). These were put on after a fire and he did not consider this tamarack an original. No reference by Vaughan or Dorr to original BT's.

Recovered Vaughan's old cedar point and 2-1/2" iron pipe stamped - $\frac{3.2}{10.11}$ with an old cedar post beside it. Iron post not very stable.

Recovered OBT's: Tamarack N63°W 8 links - now a stump badly decayed
Tamarack 16" (18") S45°E 47.3 links - chopped out face

Description of monument and accessories I established to perpetuate the original location of this corner.
Reset 2-1/2" iron pipe w/brass cap. Restamped cap - S498
T36N R10E

NBT's: Tamarack 11" S72°W 80.3 links - scribed S.C. BT
Tamarack 10" S5°W 45 links - scribed S.C. BT
1/4 $\frac{3.2}{10.11}$

The BT's listed in the original survey must have been wrong. This area is all tamarack and alder swamp. No way could have pine and aspen grown here. CPI-1975

Dated at Rhinelander, Wis., this 9th day of September, 1975.

Signature: *Philip T. Hansen* Title: Registered Land Surveyor Registration No. S-498
(County Surveyor, Registered Land Surveyor, or other duly authorized official)

Office of Register of Deeds, County of Oneida
Instrument was filed in this office for record on the 17th day of November, 1975
at 10:00 o'clock P.M.

Dore George Fischer
(Register of Deeds)

By: Deputy

3610030000